

Casa del Sr. Villalba

Solar del Colegio Colon Sr. Sabachia

Nº 10 y 8

Casa de Sr. Pascasio Pons

Nº 6

Casa de Sr. Antonio Vera

Calle Felix Pigneta

1.186 metros cuadrados
ó
23.120 palmas valencianas

Solar del Colegio de Colon Sr. Sabachia

Agencia de Sr. de Madrid

Factoría de Cerveza

Nº 6 de Sr. Aguirre de Madrid

Nº 8

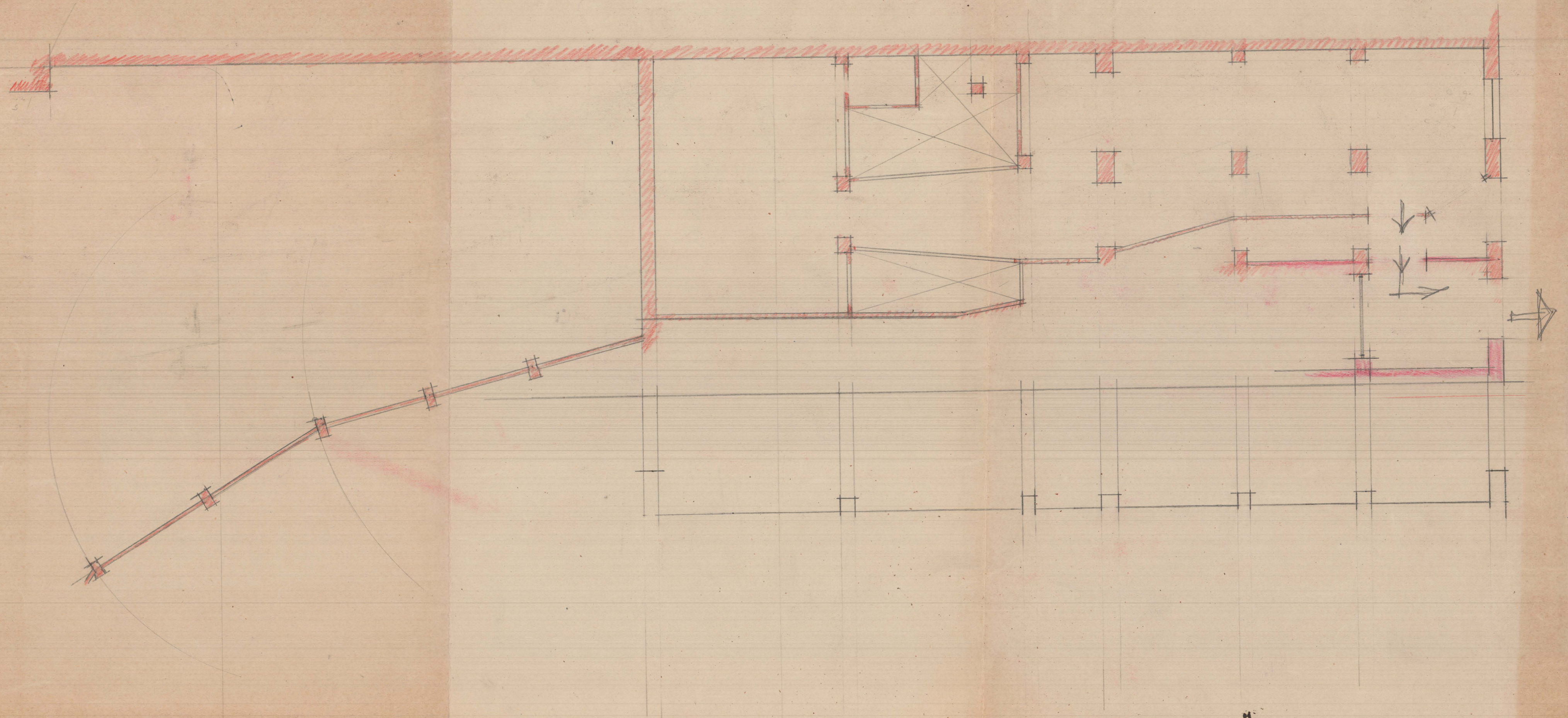
Casa de herederos de Sr. Antonio Vera

Nº 10

Nº 12 Casa del Sr. Vicente Barroca

Calle Colon

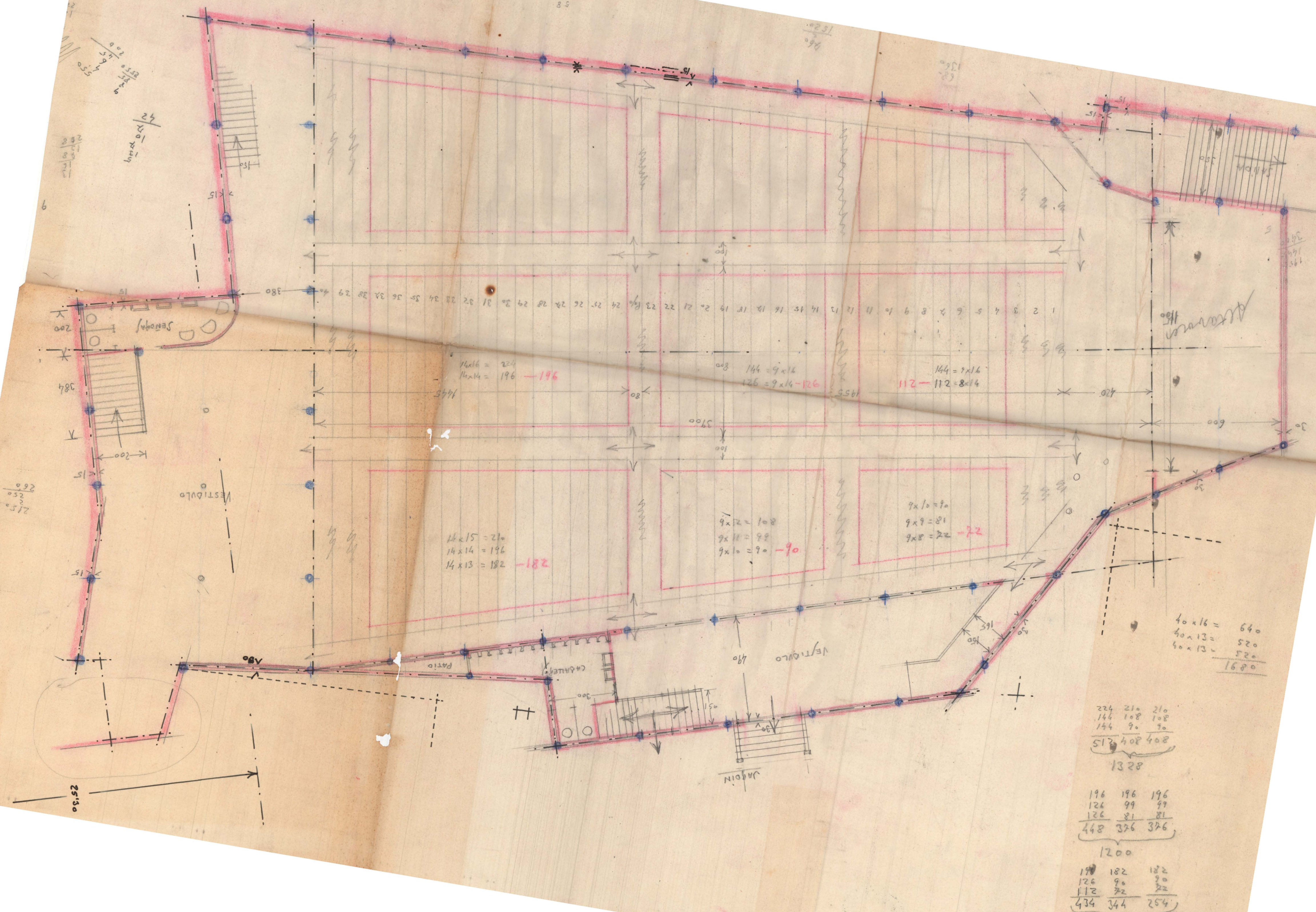
Escala 1/100 1 centimetro = 1 metro



058.
51

51





$14 \times 16 = 224$
 $14 \times 14 = 196$
 $14 \times 13 = 182$
281

$9 \times 10 = 90$
 $9 \times 9 = 81$
 $9 \times 8 = 72$
22

$144 = 9 \times 16$
 $112 = 8 \times 14$
211

$144 = 9 \times 16$
 $126 = 9 \times 14$
271

$40 \times 16 = 640$
 $40 \times 13 = 520$
 $40 \times 13 = 520$
1680

224	210	210
144	108	108
144	90	90
512	408	408
1328		

196	196	196
126	99	99
126	81	81
448	376	376
1200		

196	182	182
126	90	90
112	72	72
434	344	254

24
 $10 \times 24 = 240$
 $240 + 240 = 480$
 $480 + 240 = 720$
 $720 + 240 = 960$
 $960 + 240 = 1200$

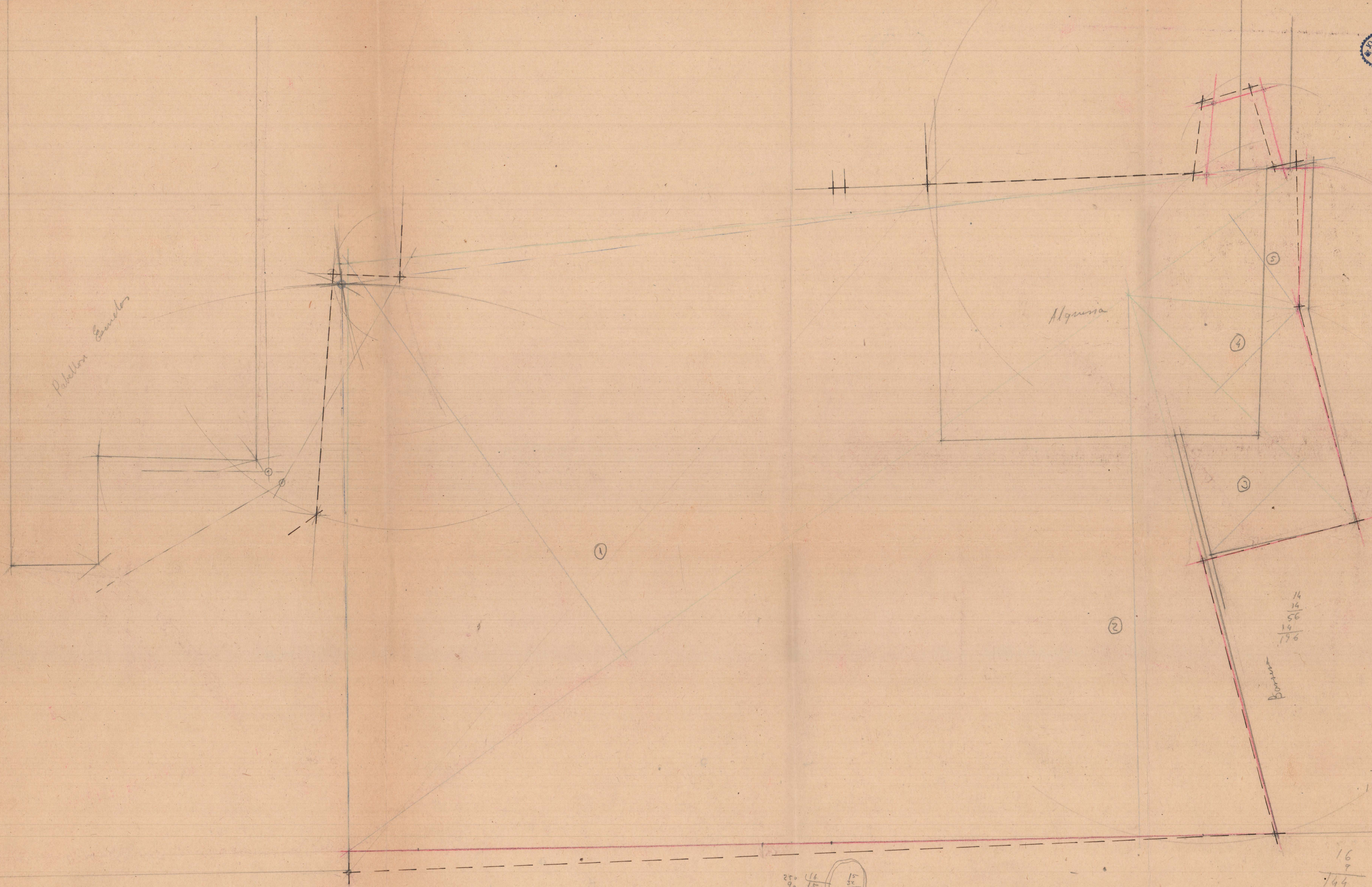
260
 250
 215

$25'30$

Palacio de San Carlos

Algunia

Barraca



1257 18
45 15
5 15
15
240
48
220

26
24 29
8 4
25 13
10 8
1
24

36
360 18
20 4
45
35
240
144
1680
3000 25
450 35
200

44
12
88
44
825

14
14
56
14
796

35
16
210
35
560

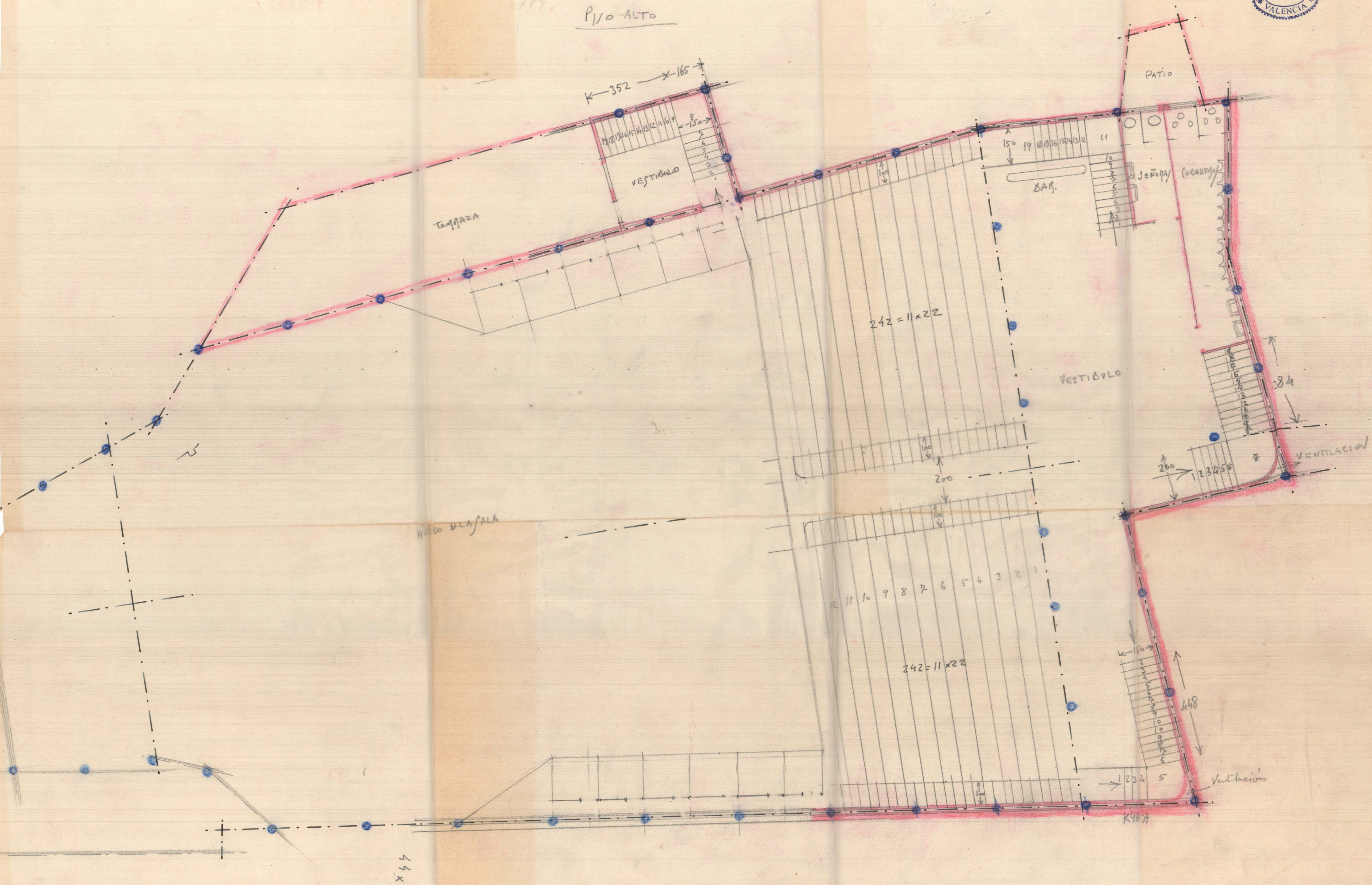
14
13
42
15

250 16
90 15
10
15
30
450

16
9
144
14

14
16
84
19

PISO ALTO



44 x 13 = 572