

Patis

Parte baja y 3 pisos =  
 $= 186 \times 0'20 - 10'30 =$

16'90 m<sup>2</sup>

Piso 4<sup>o</sup> =  $16'90 + 186 \times 0'02 =$   
 $= 16'90 + 3'70 =$

20'60 m<sup>2</sup>

Piso 5<sup>o</sup> =  $16'90 + 2 \times 3'70 =$   
 $= 16'90 + 7'40 =$

24'30 m<sup>2</sup>

Piso 6<sup>o</sup> =  $16'90 + 3 \times 3'70 =$   
 $= 16'90 + 11'10 =$

28'00 m<sup>2</sup>

Piso 7<sup>o</sup> =  $16'90 + 4 \times 3'70 =$   
 $= 16'90 + 14'20 =$

31'70 m<sup>2</sup>

Piso 8<sup>o</sup> =  $16'90 + 5 \times 3'70 =$   
 $= 16'90 + 18'50 =$

35'40 m<sup>2</sup>

Piso 9<sup>o</sup> =  $16'90 + 6 \times 3'70 =$   
 $= 16'90 + 22'20 =$

39'10 m<sup>2</sup>

Piso 10<sup>o</sup> =  $16'90 + 7 \times 3'70 =$   
 $= 16'90 + 25'90 =$

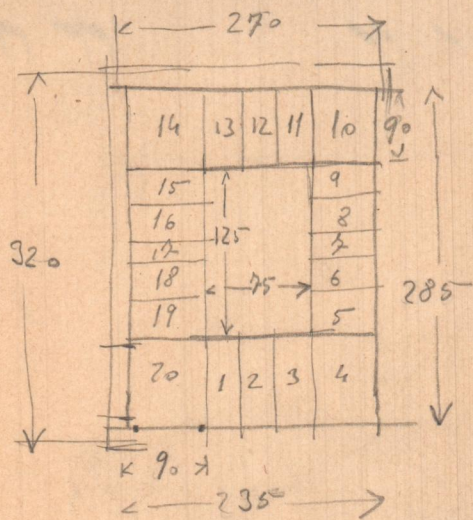
42'80 m<sup>2</sup>

Loja de la capilla porque una de patios

altura de la caja = 35 m l.

debe ser la caja de =  $35 \times 0'065 = 2'22 \text{ m}^2$

es " " " =  $1'10 \times 2'10 = 2'31 \text{ m}^2$



12 altu  
20 espes  
340 m.

Patio

$$\begin{array}{r} 18 \\ \times 10'30 \\ \hline 54 \\ 18 \\ \hline \end{array}$$

Superficie total 185'40 m<sup>2</sup>

Patio 4 pizos	20 %
" 5 pizos	10 %
total	30 %

186 m<sup>2</sup>  
30 %

55'80 m<sup>2</sup>

Jachada 10'30 m. 1

Superficie Patios 45'50 m<sup>2</sup>

Patio posterior  $\frac{150 + 250}{2} \times 10'30 = 20'60 \text{ m}^2$

Pegajeros  $2 \times 2'50 \times 1 = 5'00$

Grande  $2'50 \times 3 - 1'50 = 6'50$

32'10 m<sup>2</sup>

Faltan

$10'30 \times 1'80 = 13'39 \text{ m}^2$

45'49 m<sup>2</sup>