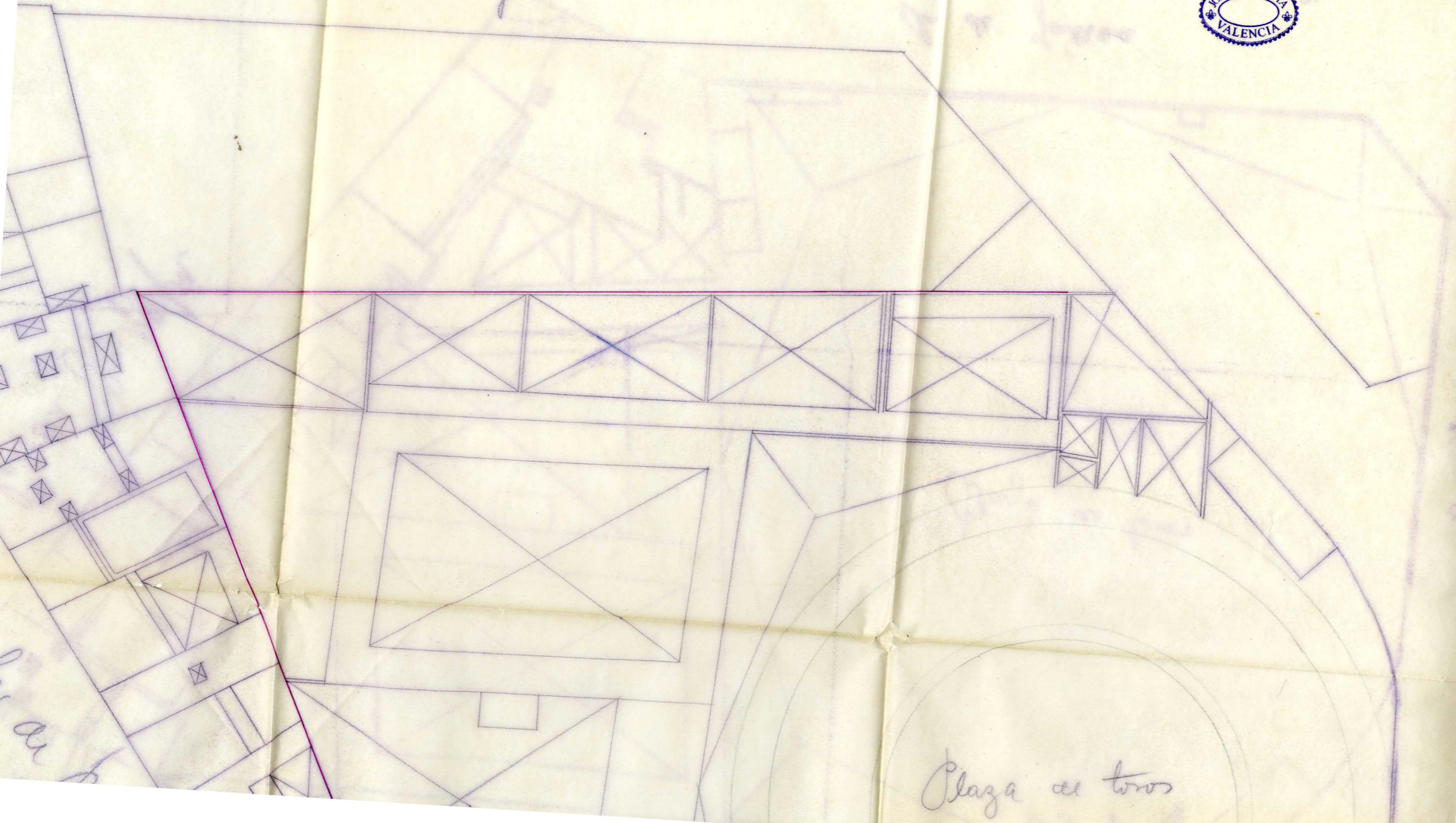
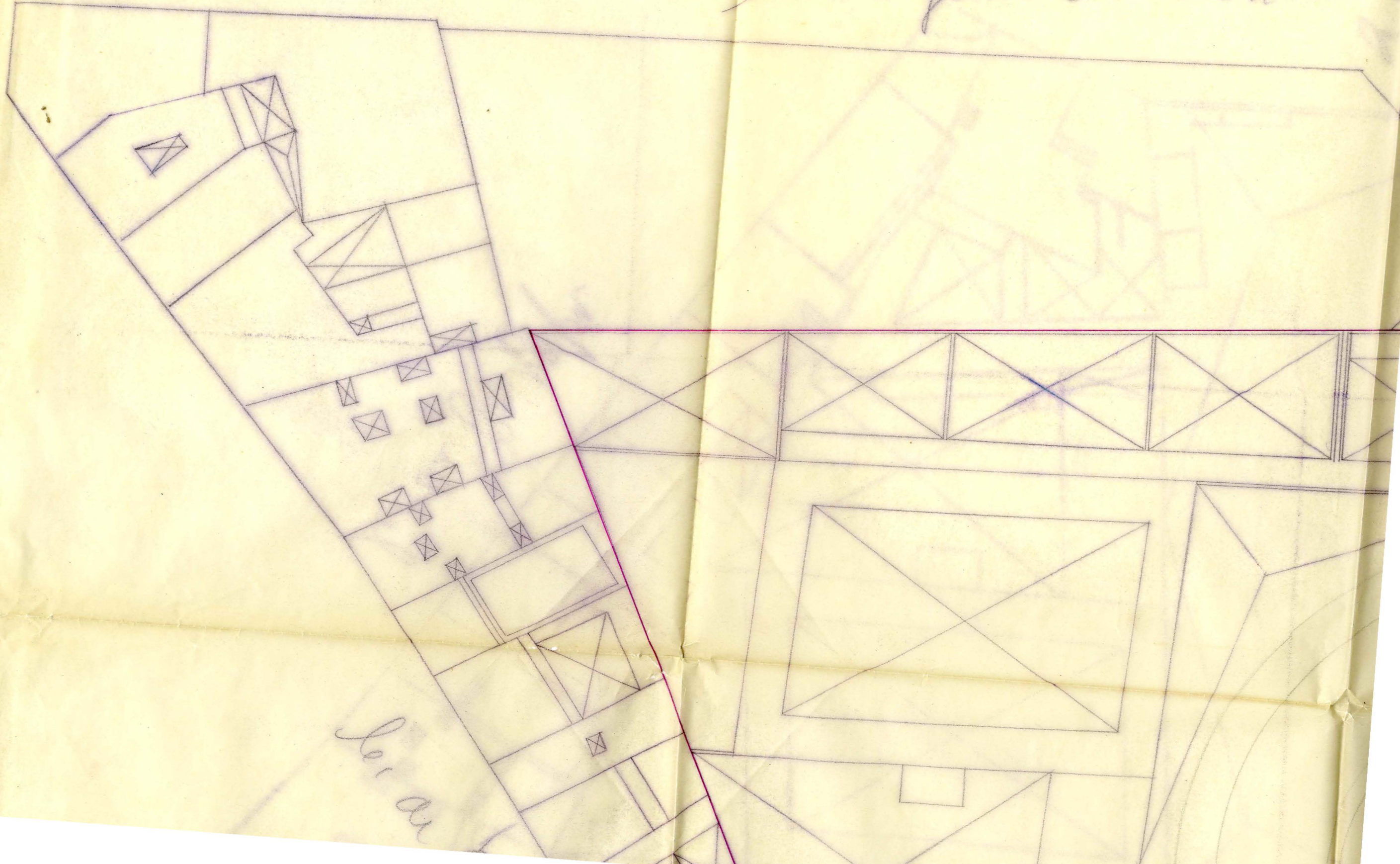


Pl. del General San Martín

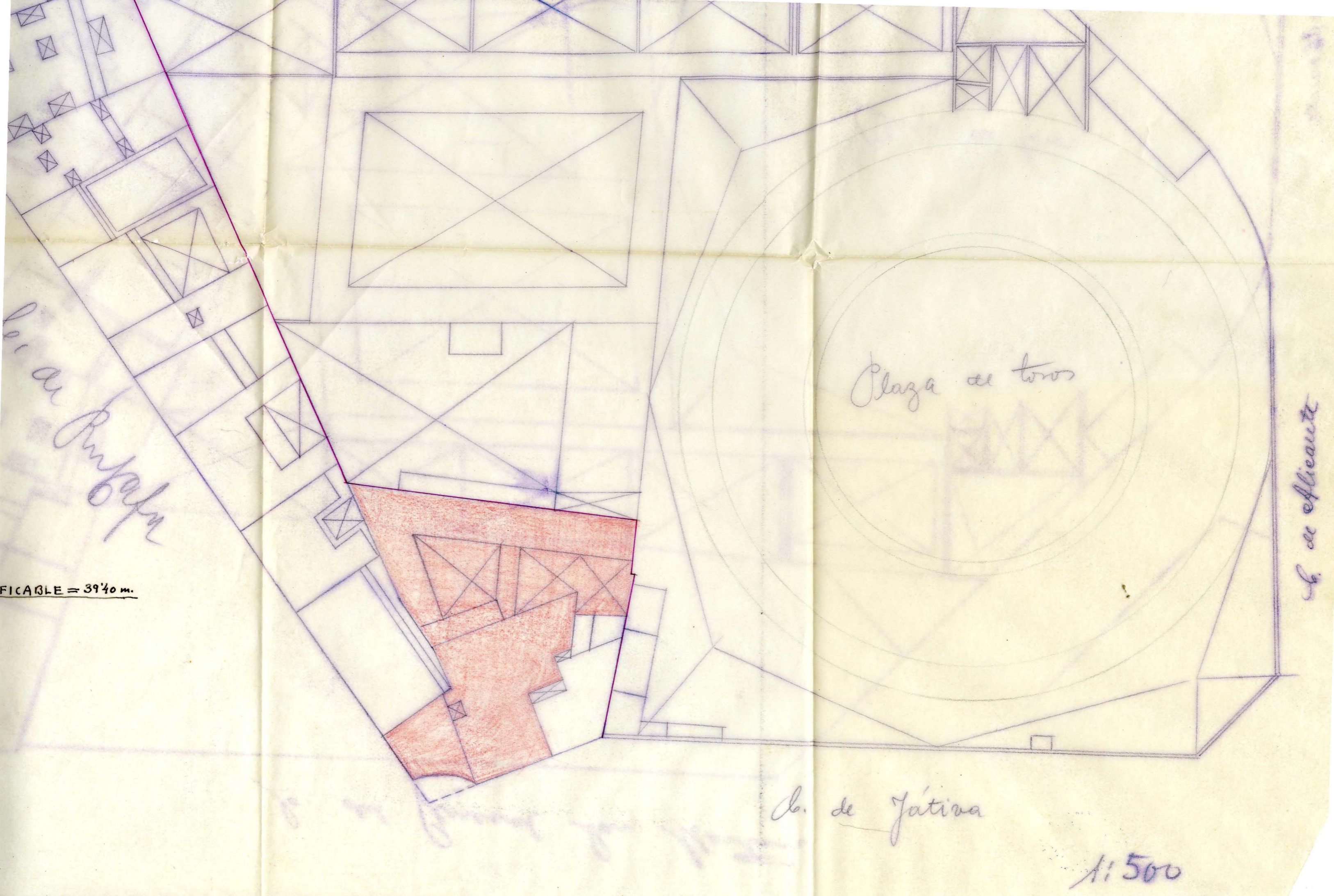


Plaza de toros

le. del General San Martín



del ca



Plaza de Toros

ESCALABLE = 39'40 m.

Plaza de toros

Plaza de Toros

Plaza de Toros

1:500

*Barra de Pulpán*

**PROFUNDIDAD  
DE LA ZONA EDIFICABLE = 39'40 m.**

*de de*