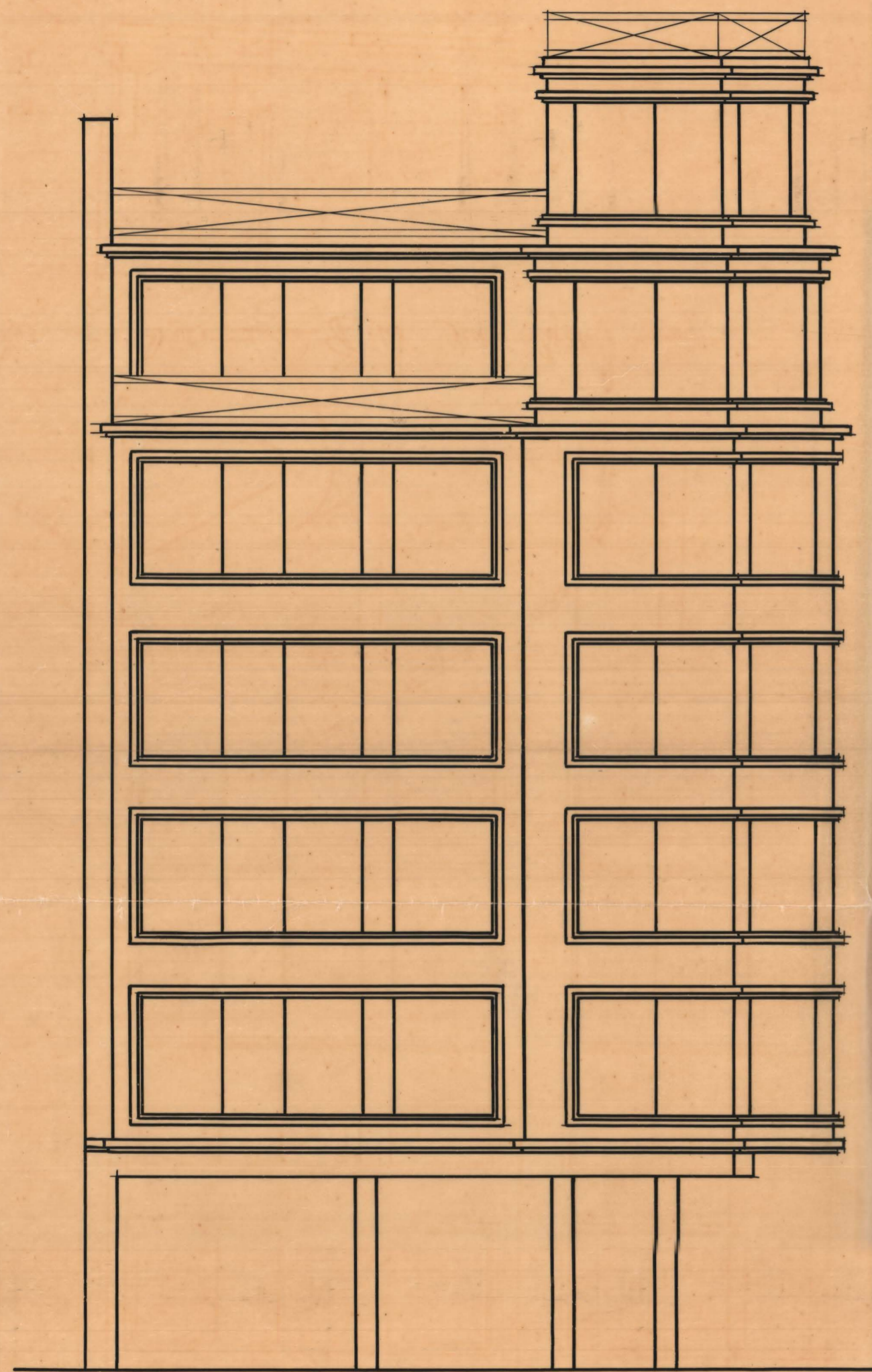
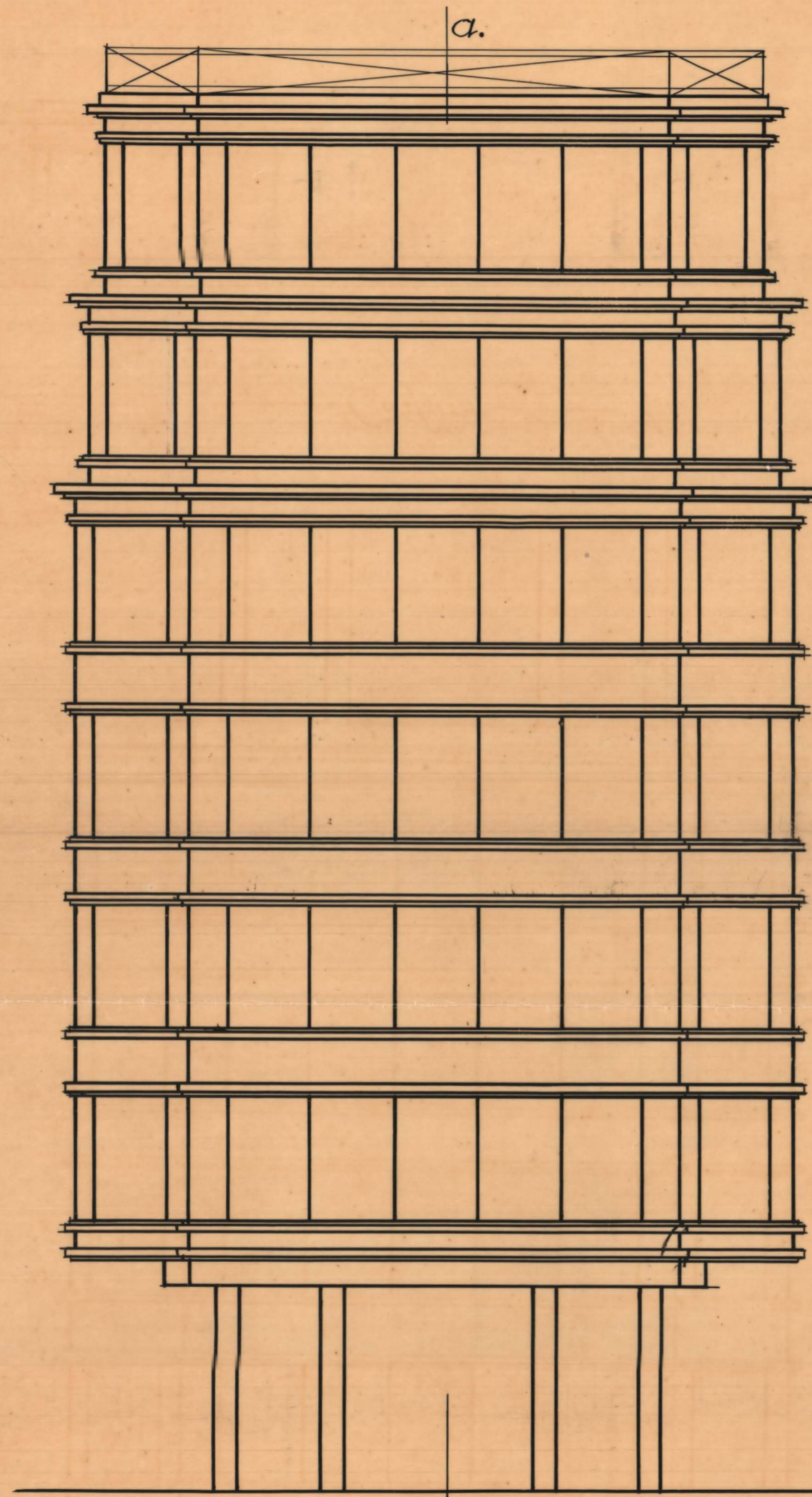


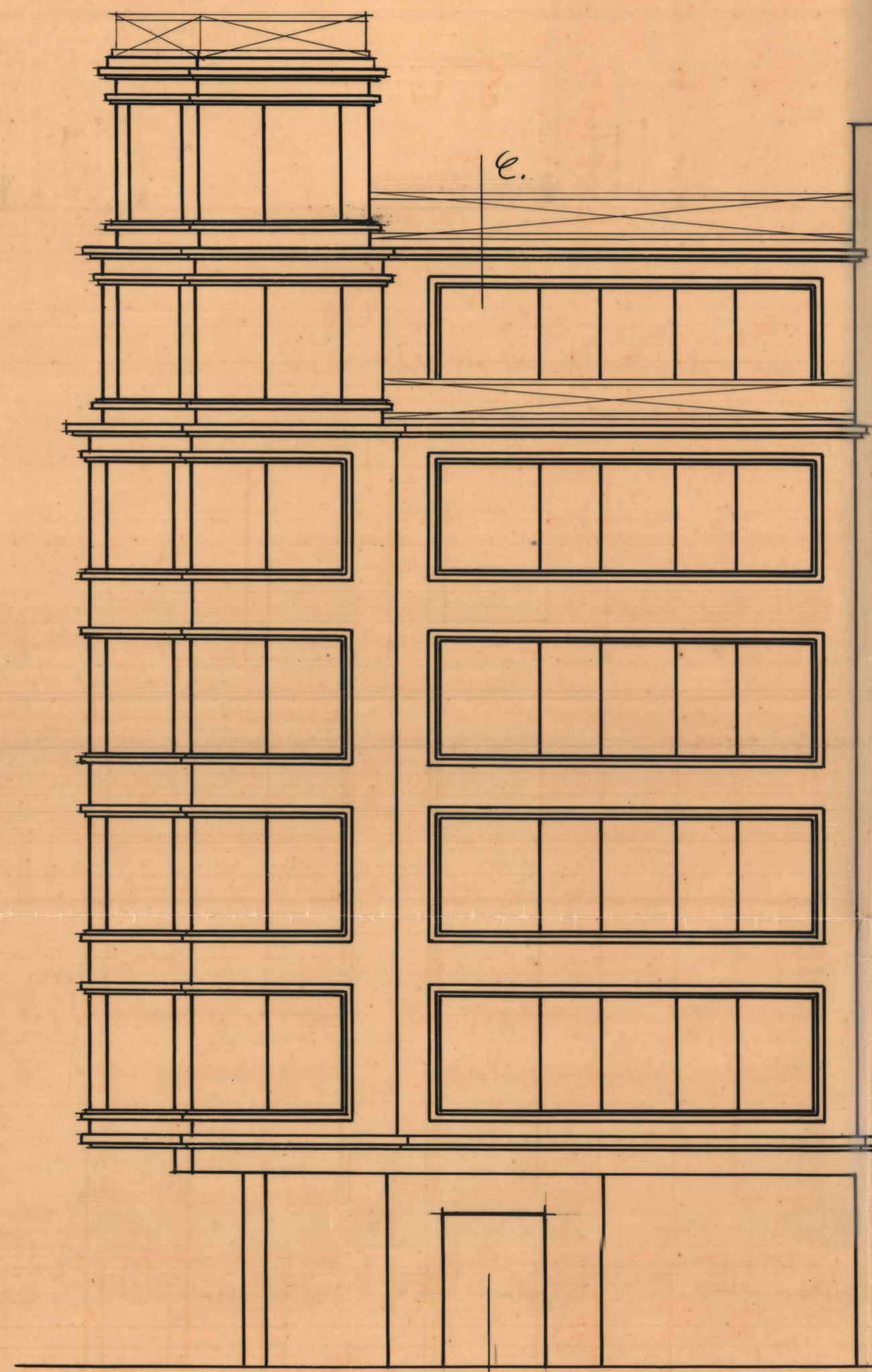
Proyecto de edificio en el chaflán de las calles de Cuenca y Buen Orden



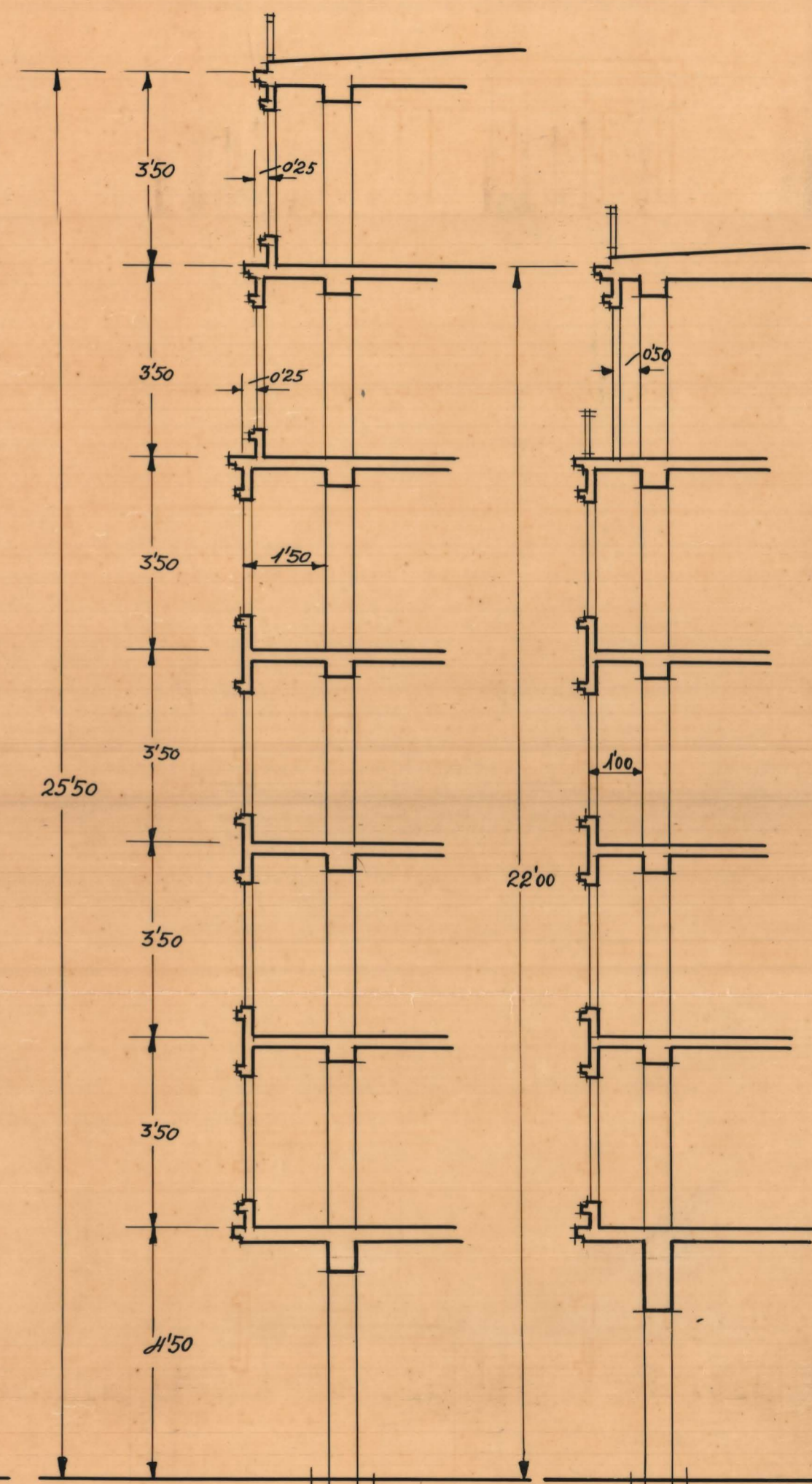
Buen Orden
Calle Buen Orden



a.
B.
Chaflán



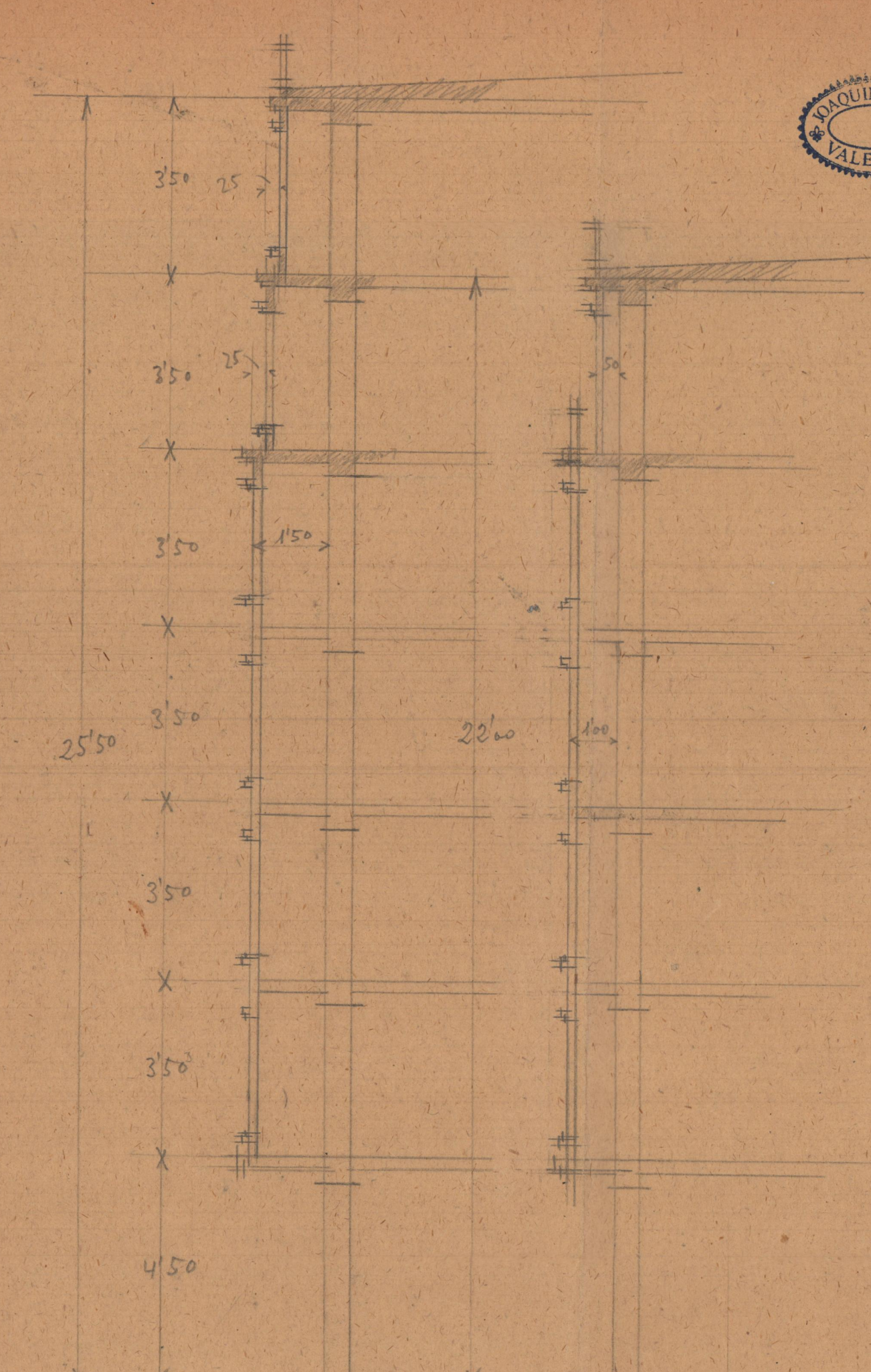
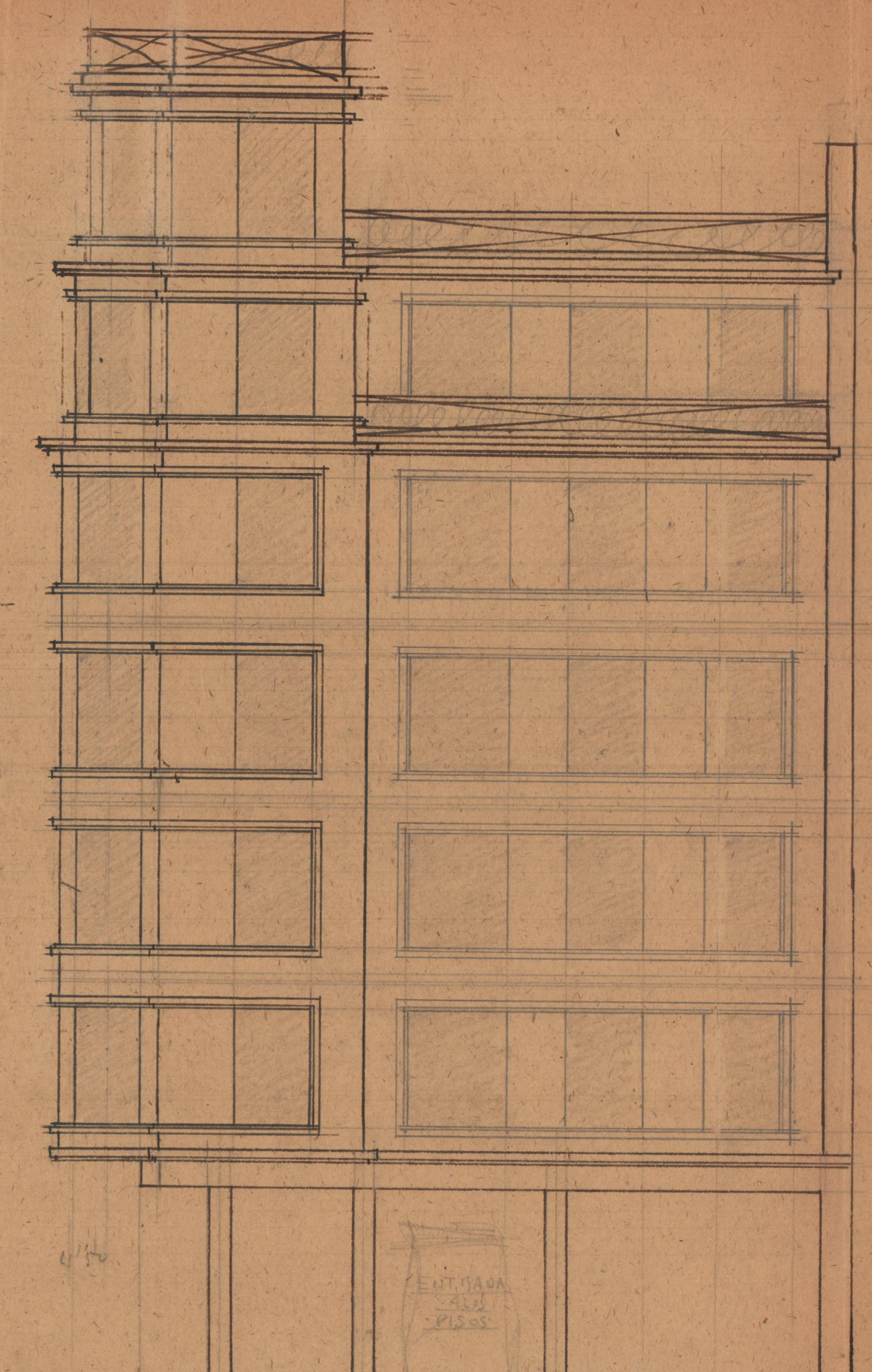
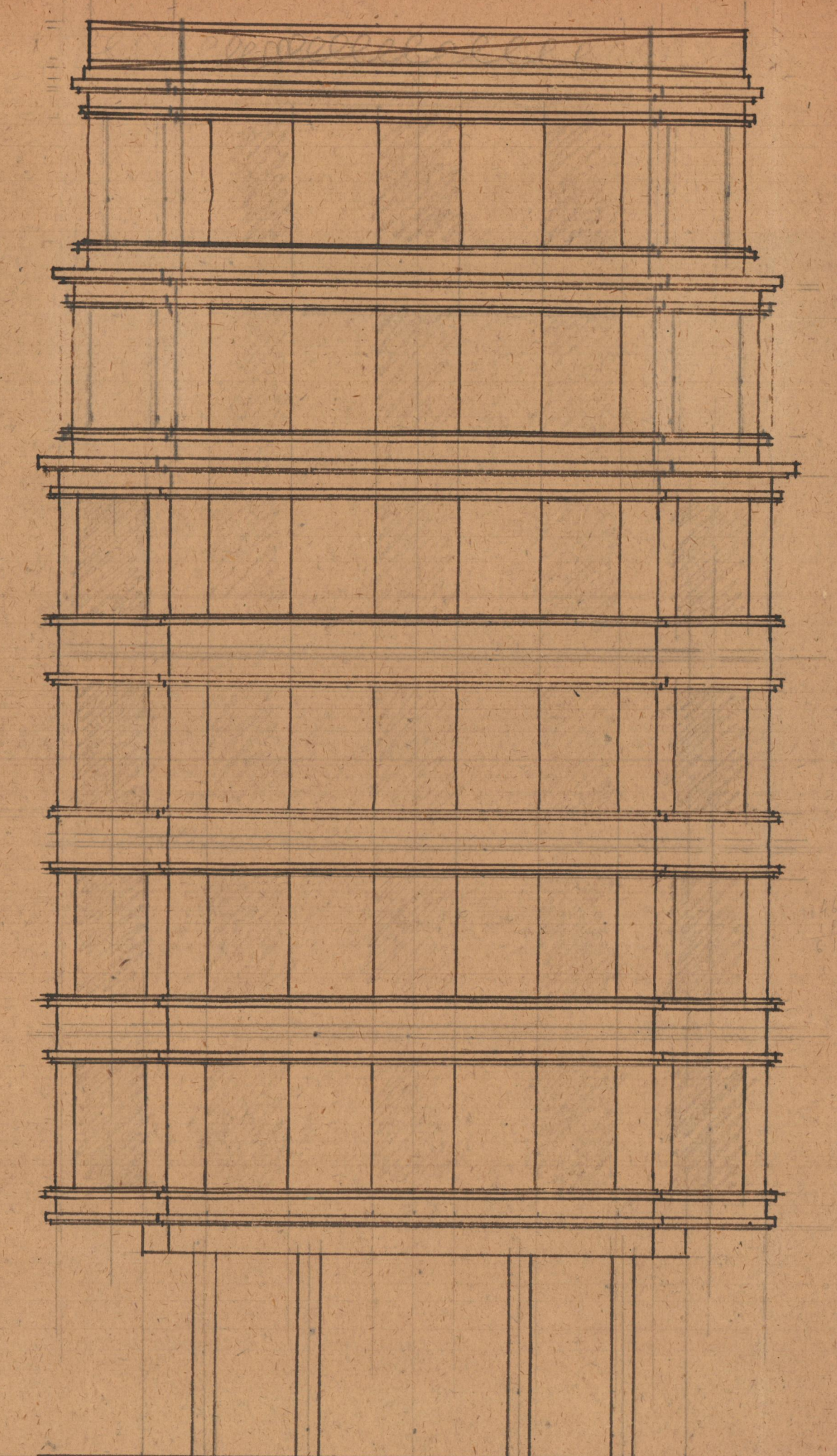
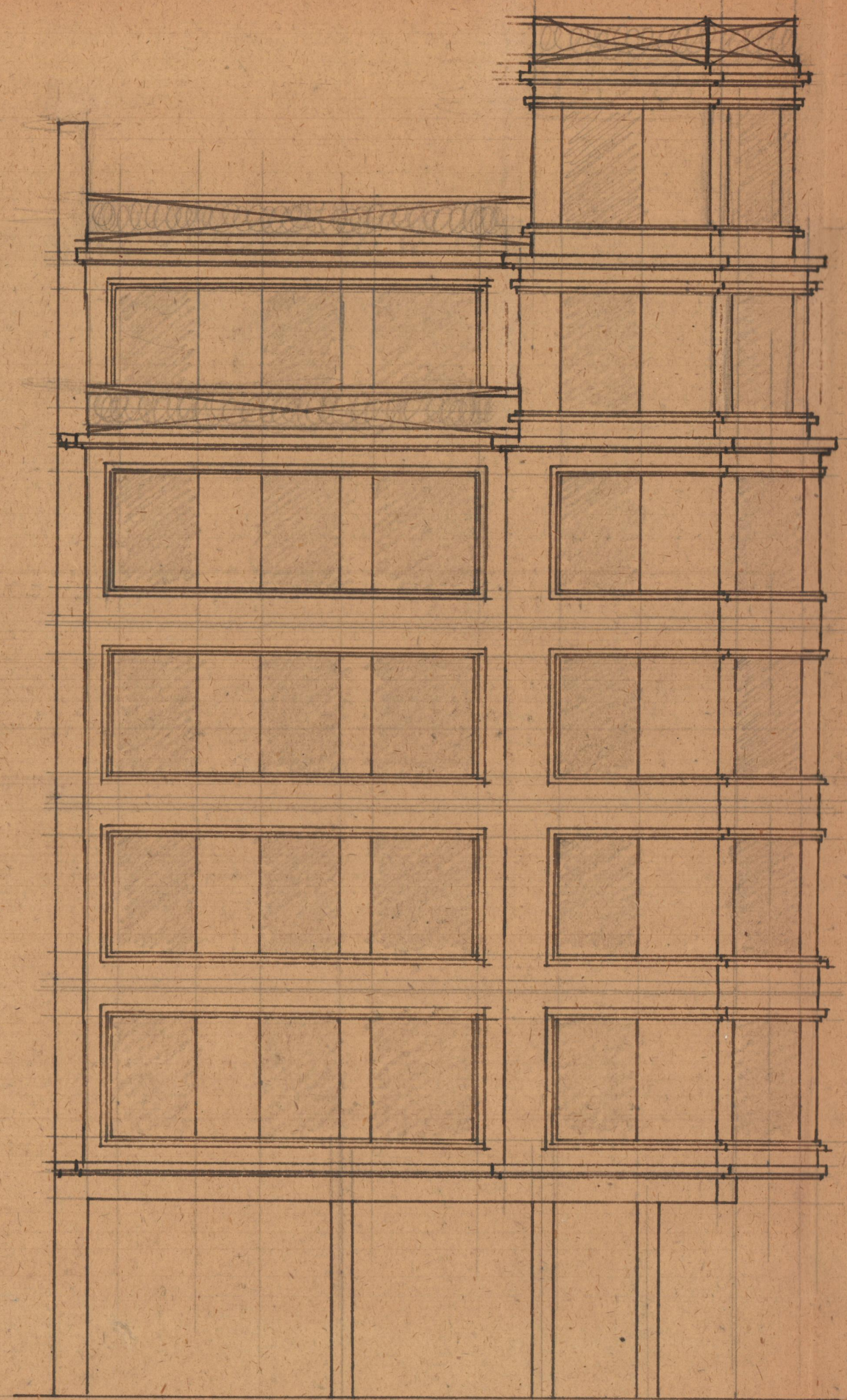
e.
D.
Calle de Cuenca



Sección A-B Sección C-D

Escala 1:100
Valencia 13 Marzo 1911
El Arquitecto

[Handwritten signature]



ENTRADA
-AL-
PISOS

