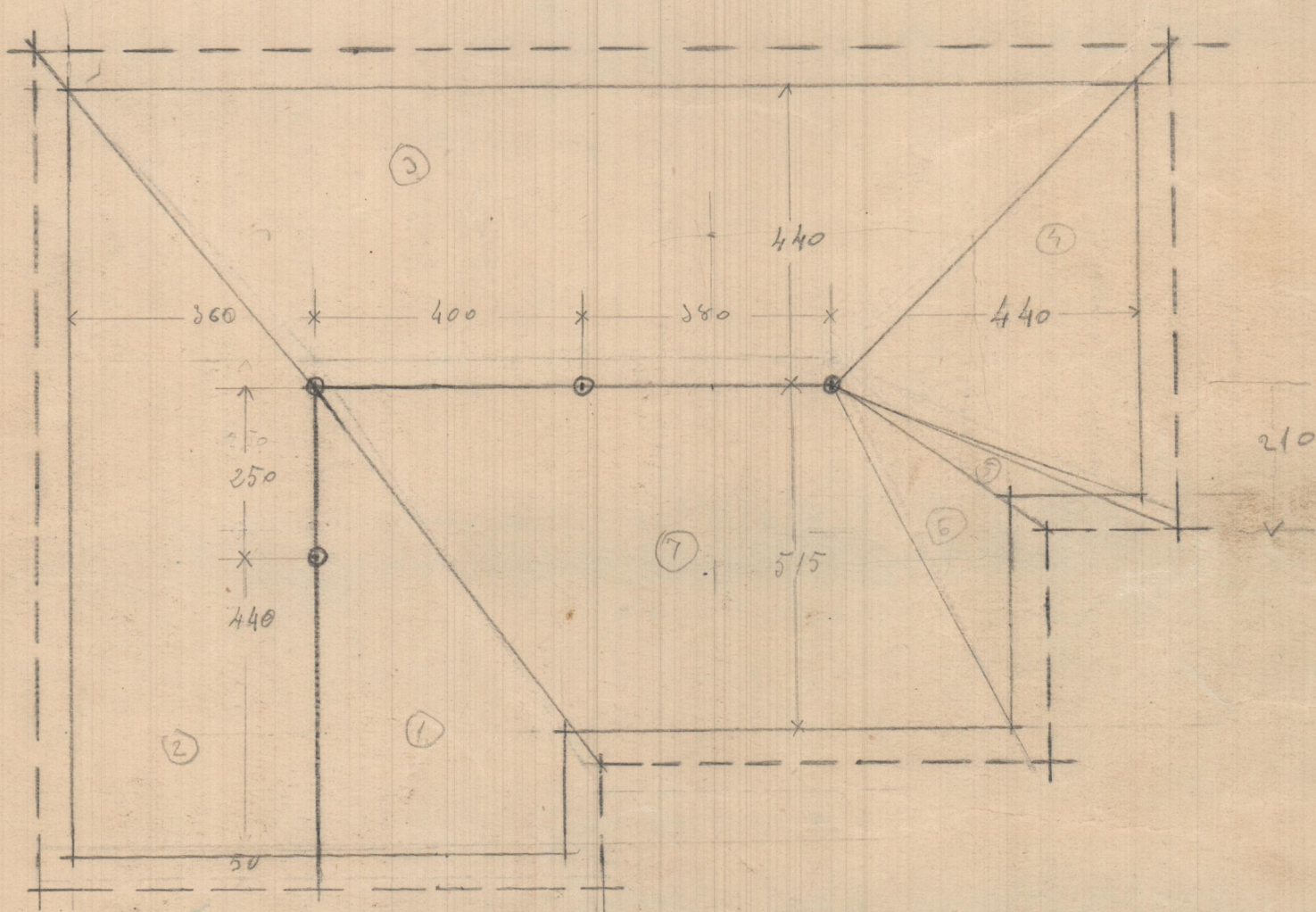


$$210 \times 4.50 + 0.50 = 5.00 \text{ ml.}$$

$$360 \times 5.40 + 0.50 = 5.90 \text{ ml}$$

$$515 \times 6.50 + 0.50 = 7.00 \text{ ml}$$

$$440 \times 6.00 + 0.50 = 6.50 \text{ ml.}$$

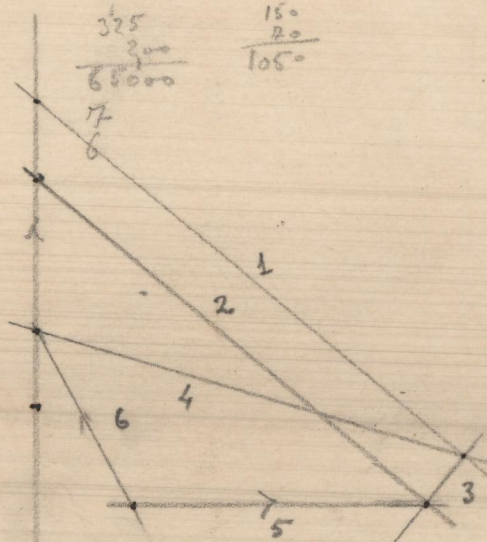
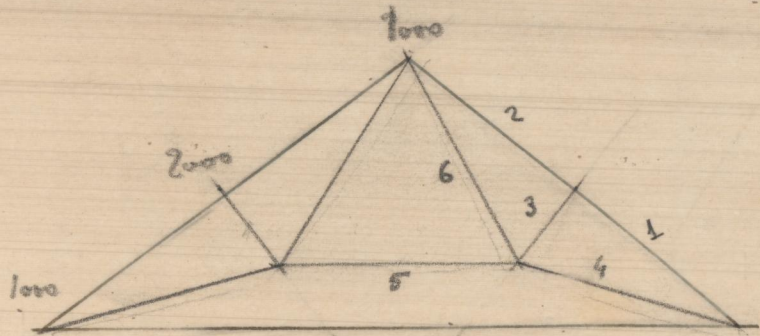


PLANTA CUBIERTAS

à 200 Kgr. m²

à 700 Kgr. m. linéal

à 1000 Kgr. extrême y 2000 centés



- 1 = 7300 Kgr. } 22x10
2 = 6200 " }
3 = 800 " — 45x45x9 — 2'36
4 = 6000 " }
5 = 4000 " } 6cm² — 6x1
6 = 2700 " }