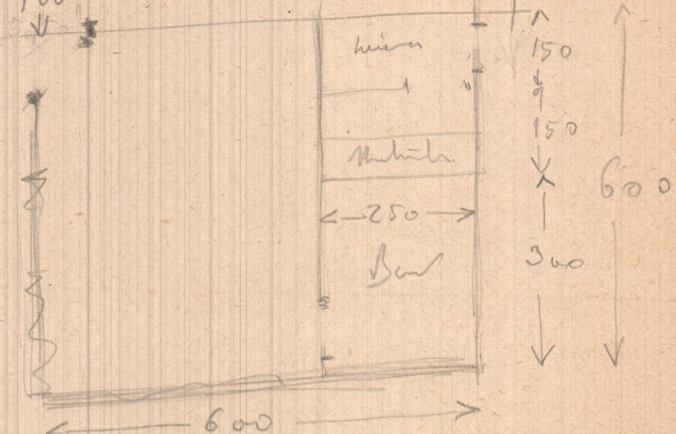
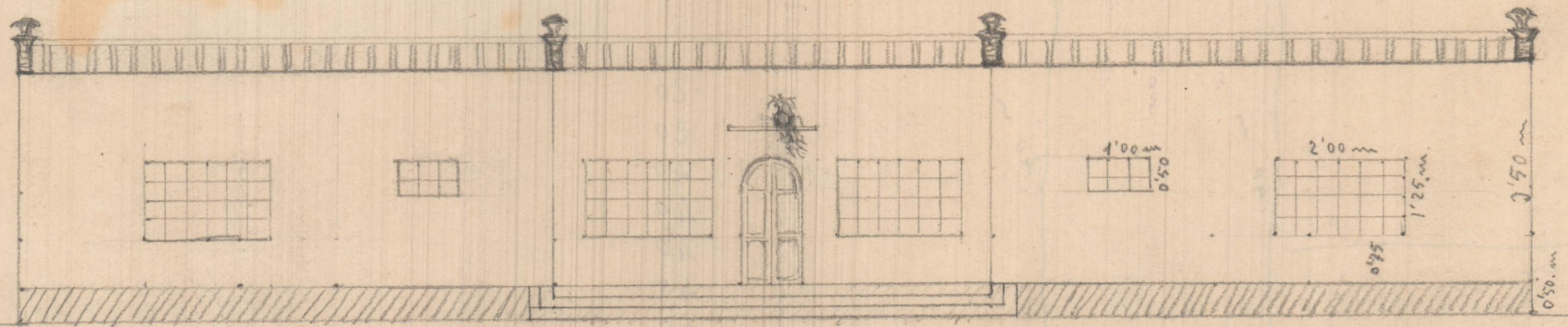
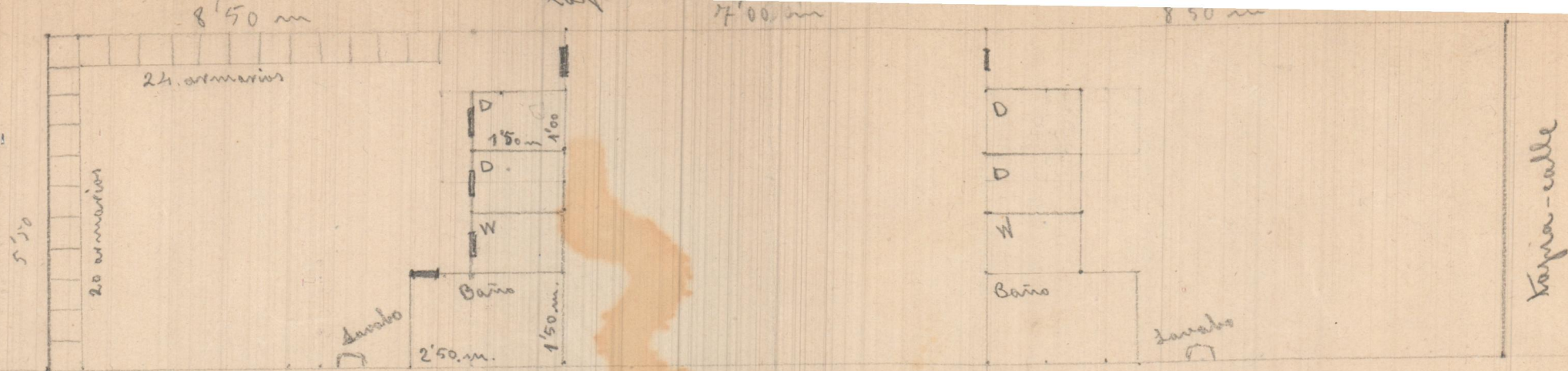


Lysfibre
 $6 \times 6 = 36'00$
 $12'20 \times 6'70 = 81'74$

 $11'774$





nivel suelo.

$Vidrieros = 2'50 \times 5 + 2 \times 0'50 = 13'50 \text{ m}^2$
 $\text{Puerta} = 1'00 \times 3'00 = 3'00 \text{ m}^2$
 $\text{punto interior} = 10 \times 2'50 \times 0'90 = 22'50 \text{ m}^2$
 $\text{Delantada} = 29'50 \times 1'00 = 29'50 \text{ m}^2$

- Dachas = 4
- Wp. = 2
- Dueros = 2
- Widets = 2
- luceros = 4

$\text{Superficie total} = (8'50 \times 2'60 + 8'50) 5'50 = 24'60 \times 5'50 = 132$
 $\text{zocelo} = 29'50 \times 0'42 = 12'39 \text{ m}^2$
 $\text{Muro} = 3'50 \times 29'50 = 103'25 \text{ m}^2$
 $\text{Tabiques} = (5'50 \times 4 + 2'50 \times 2 + 1'50 \times 6) 3'50 = 126 \text{ m}^2$
 $\text{Alfanzuilla} = 20 \text{ u. l.}$