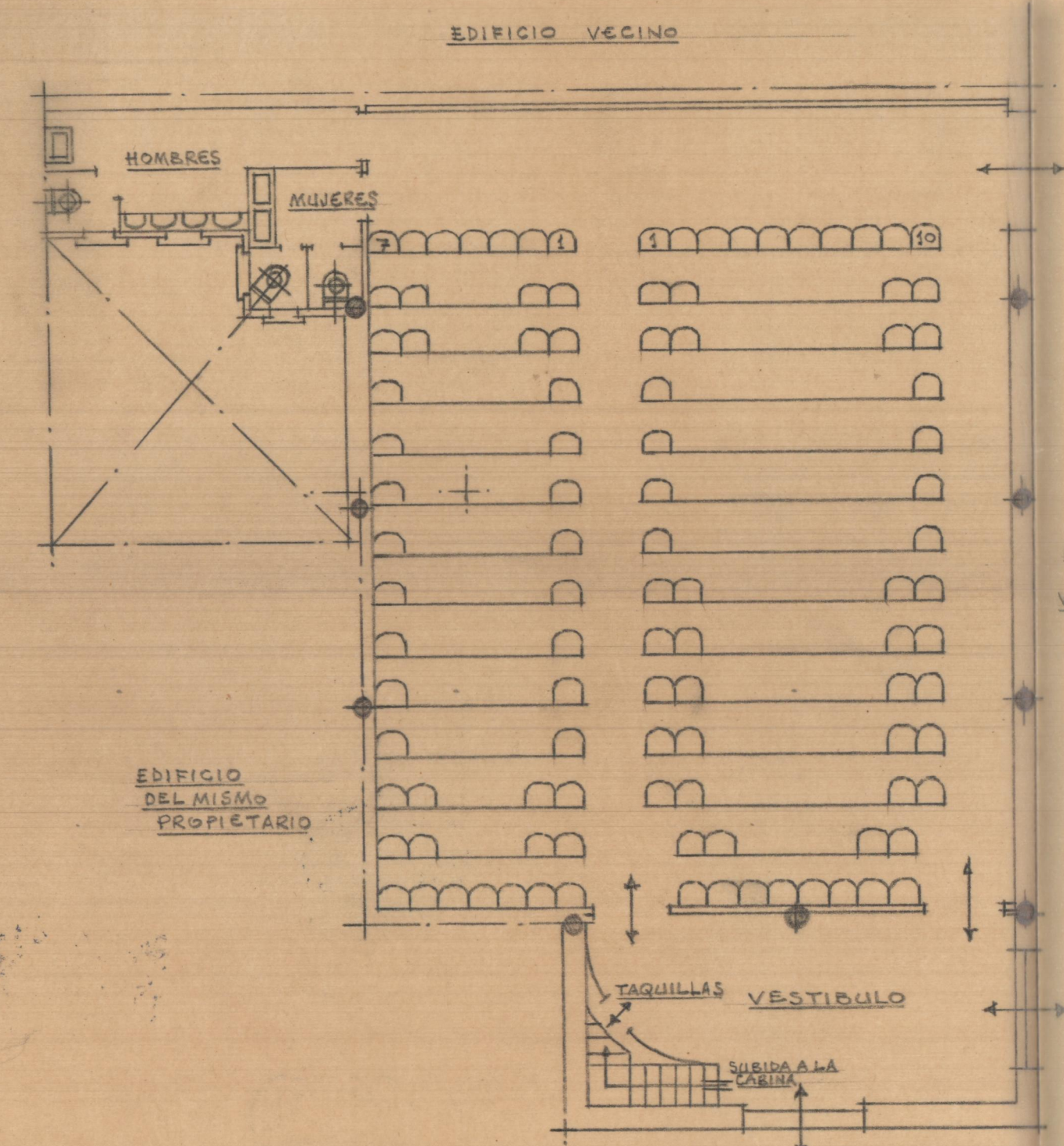
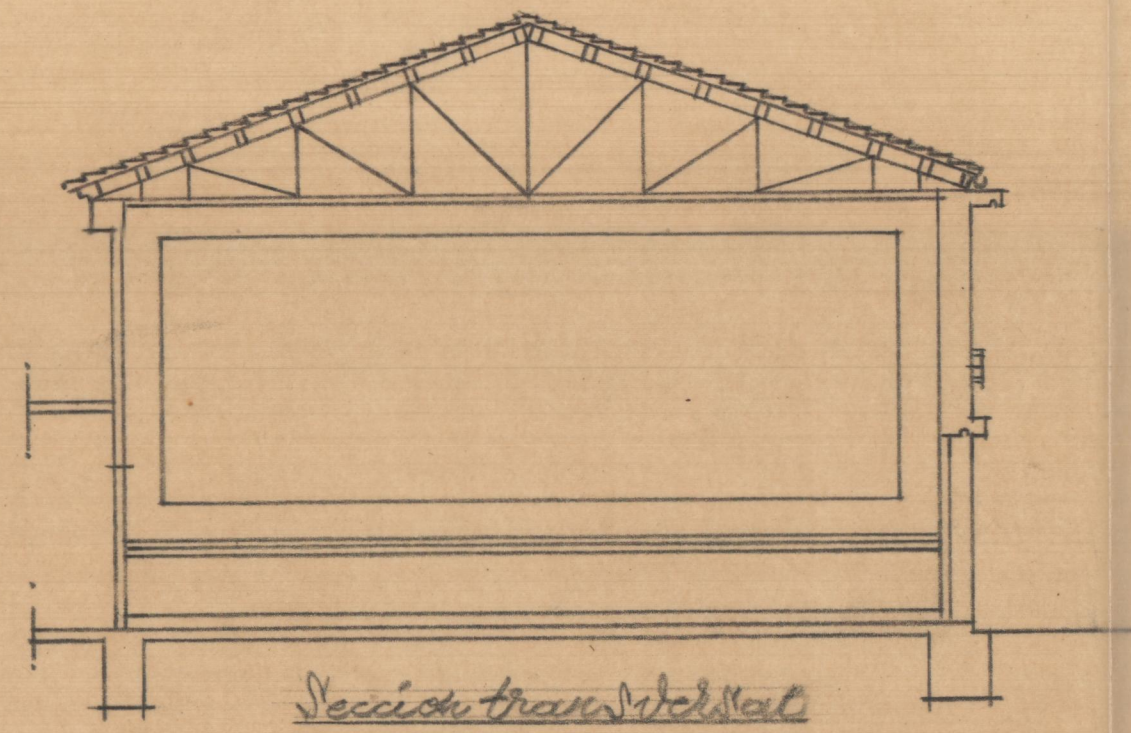


Valencia y Diciembre de 1955
 EL ARQUITECTO

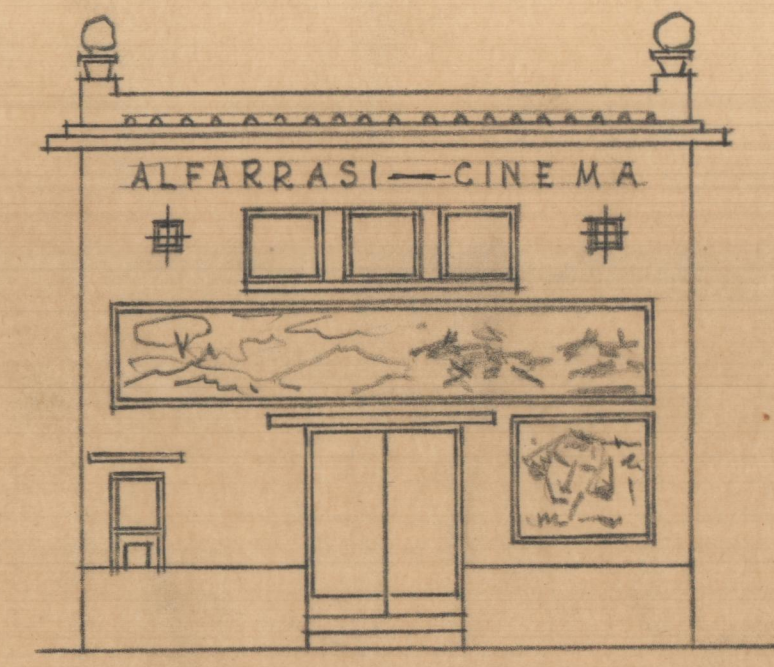
J. Rieta



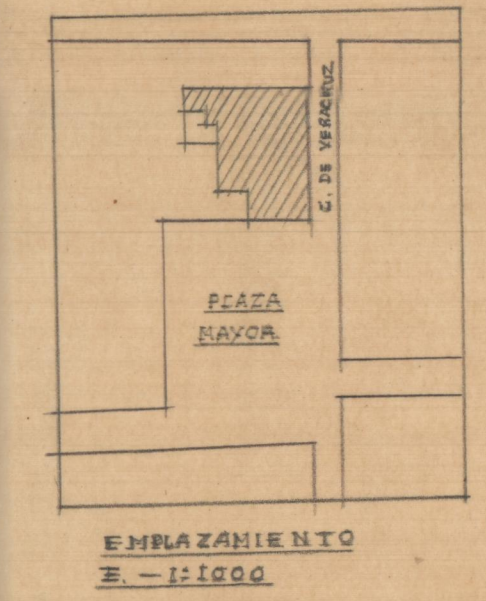
238 ASIENTOS
 Planta de distribución



Sección transversal

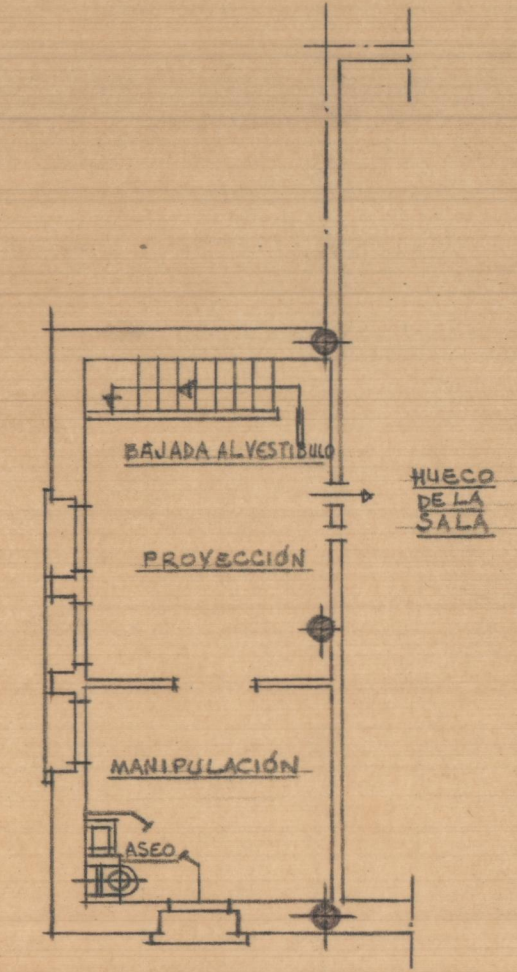


Fronte

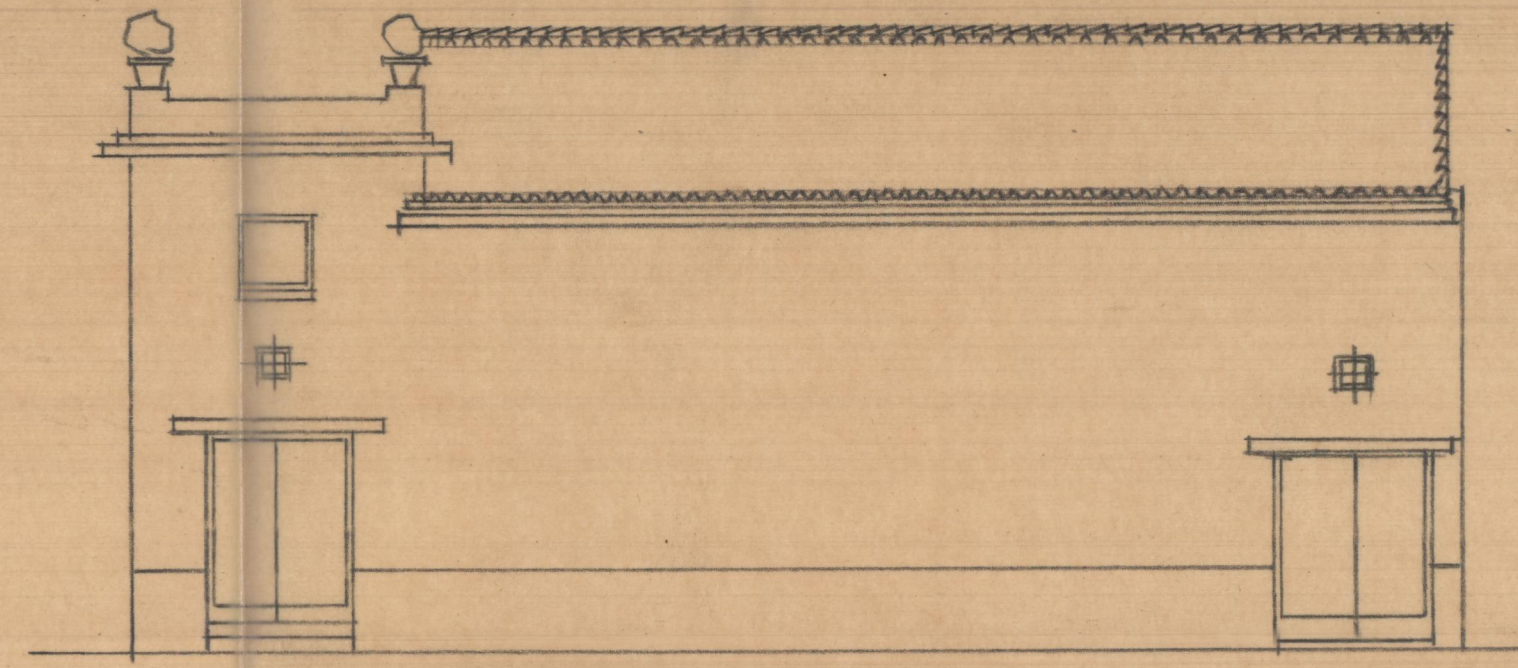


EMPLAZAMIENTO
 E. - 1:1000

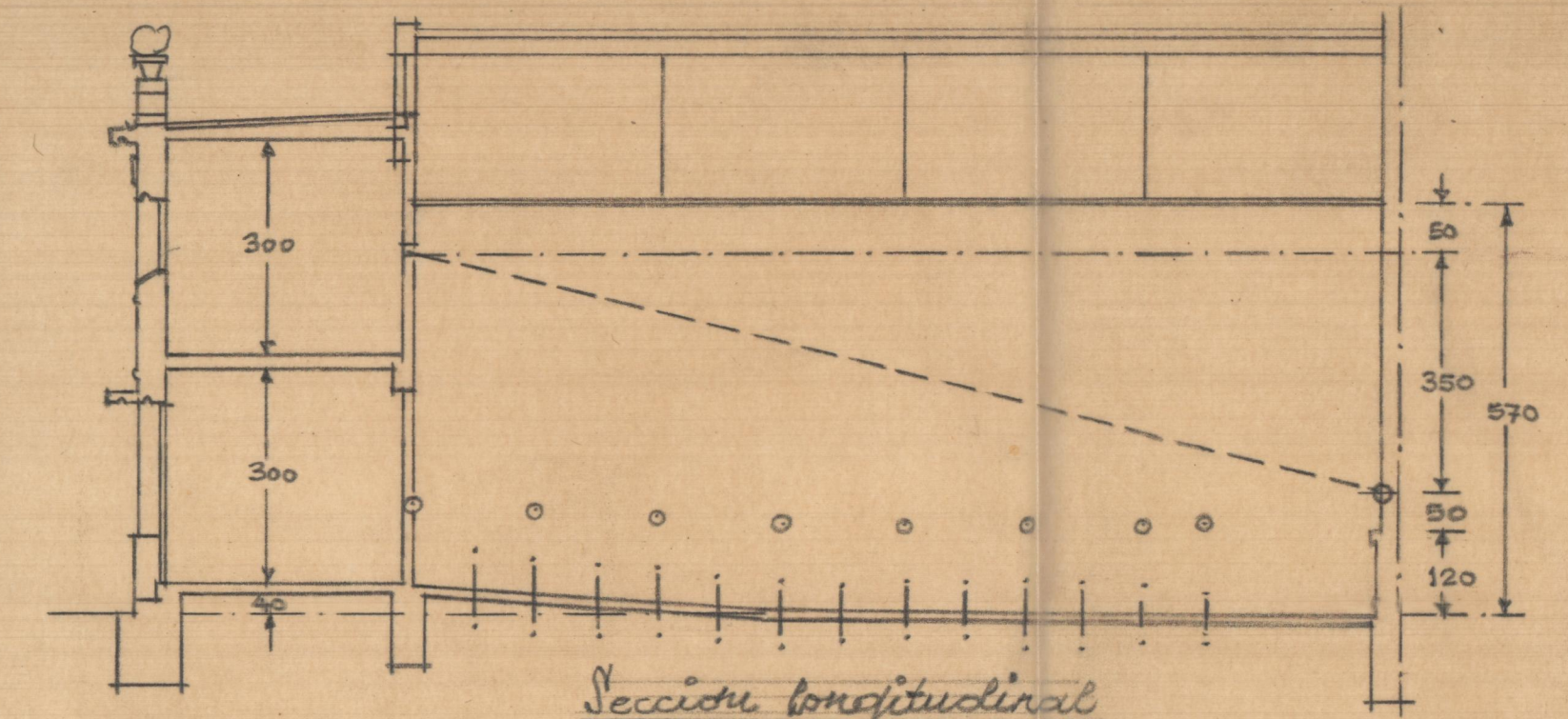
CALLE DE VERACRUZ



Planta de cabina



Fachada a la Calle de Veracruz



Sección longitudinal