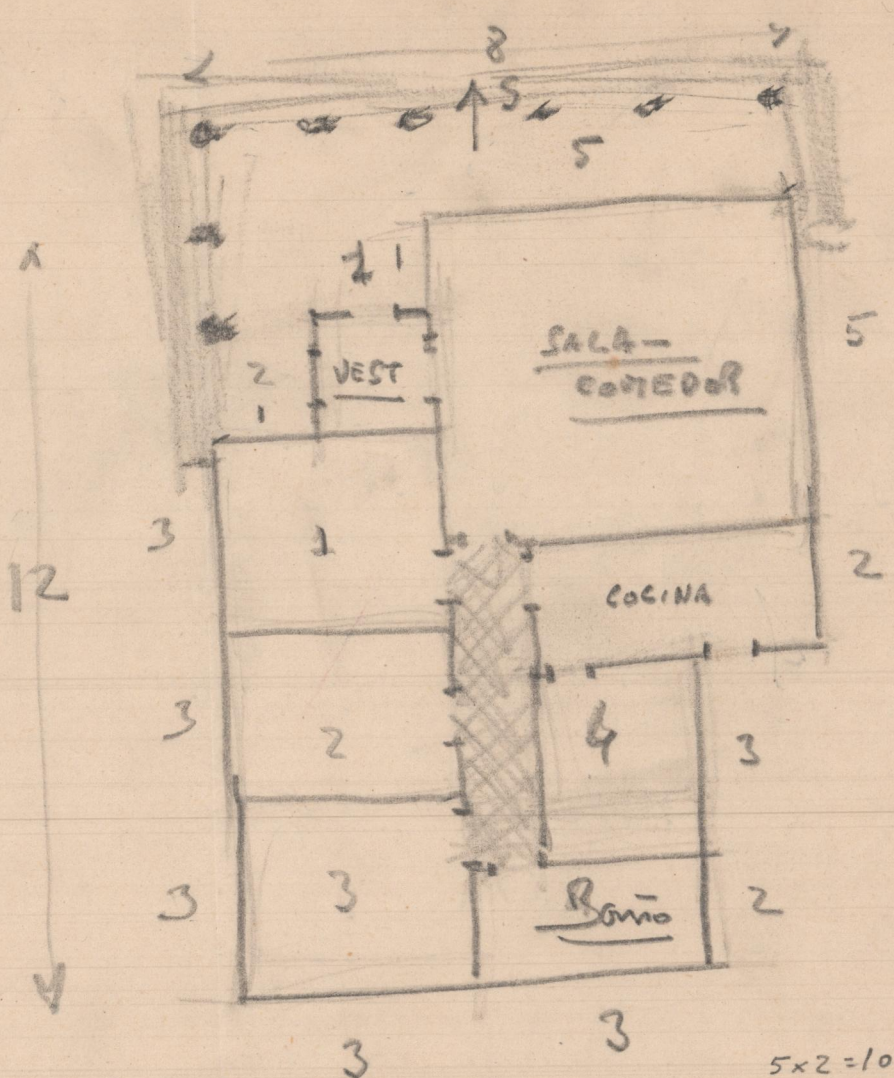
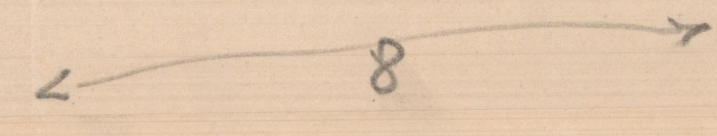
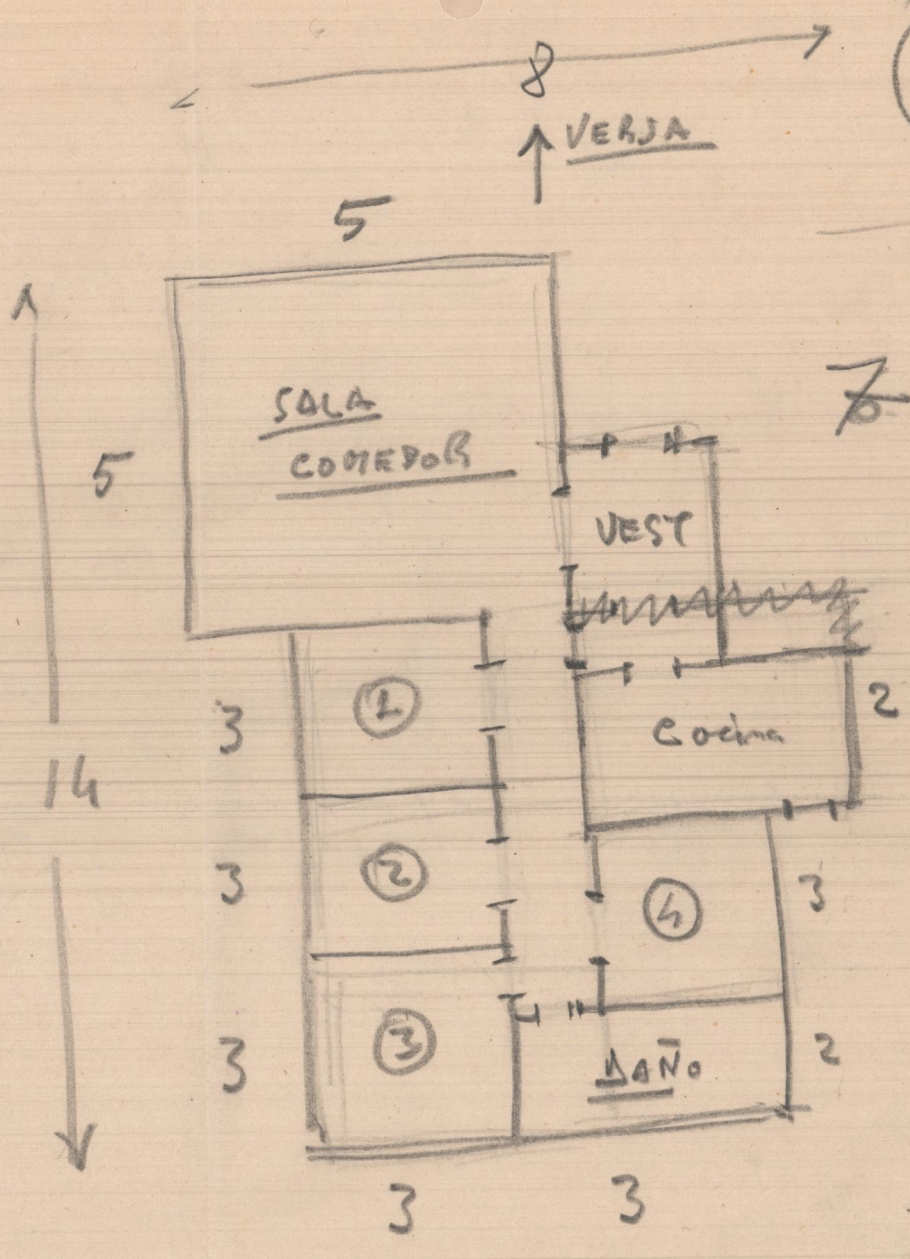


1



$$\begin{array}{r}
 5 \times 2 = 10 \\
 3 \times 1 = 3 \\
 \hline
 13 \\
 8 \times 12 = 96 \\
 \hline
 83 \\
 4 \times 8 = 32 \\
 90 \times 2 = 54000 - 72000 \\
 32 \times 2 = 9600 - 12800 \\
 \hline
 63600 - 84800
 \end{array}$$

2



3

