

$$Q_1 = \frac{5'60 + 6'10}{2} \times \frac{5'65}{2} \times 400 \times 2 = 11413 \text{ Kg}$$

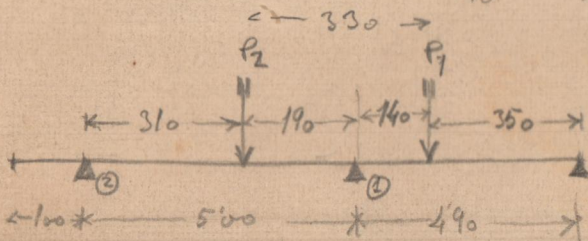
$$60 \times 60 \times 2 \times 1600 = \frac{4544 \cdot}{15957 \text{ Kg}}$$

$$Q_2 = \frac{16000}{2} = 8000 \text{ Kg}$$

$$\text{Sección de } Q_1 = 50 \times 50 = 2500 \text{ cm}^2$$

$$\text{Sección de } Q_2 = 35 \times 35 = 1225 \text{ cm}^2$$

①, ② de 60x60



$$\text{Peso medianera} = 3'50 \times 0'13 \times 1600 = 428 \text{ Kgr.} = 228 \text{ Kg. m. l.}$$

$$P_1 = \begin{cases} P_{1yo} = \frac{330 + 3'50}{2} \times \frac{5'65}{2} \times 400 = 3842 \text{ "} \\ \text{Widid} = \frac{330 + 3'50}{2} \times \frac{5'65}{2} \times 300 = 2881 \text{ "} \\ P_{1h} = 3'50 \times 0'40 \times 0'40 \times 1600 = 896 \text{ "} \end{cases}$$

$$P_2 = \begin{cases} P_{2yo} = \frac{310 + 330}{2} \times \frac{5'65}{2} \times 400 = 3616 \text{ Kgr.} \\ \text{Widid} = \frac{310 + 330}{2} \times \frac{5'65}{2} \times 300 = 2712 \text{ "} \\ P_{2h} = 3'50 \times 0'40 \times 0'40 \times 1600 = 896 \text{ "} \end{cases}$$

$\frac{7619 \text{ Kg}}{7224 \text{ Kg}} = 2619 \text{ Kg.} \approx 8000$   
 $\frac{7224 \text{ Kg}}{7224 \text{ Kg}} = 7224 \text{ Kg.} \approx 8000$

$$M_{xy} = \frac{p l^2}{10} = \frac{428 \times 500^2}{10} = 1820 \text{ Kg. m.}$$

$$P_1 \times 5'10 = P_1 \times 3'20 \Rightarrow q_1 = \frac{P_1 \times 3'20}{5'10} = \frac{29600}{5'10} = 5803 \text{ Kg}$$

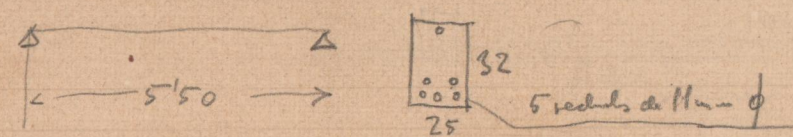
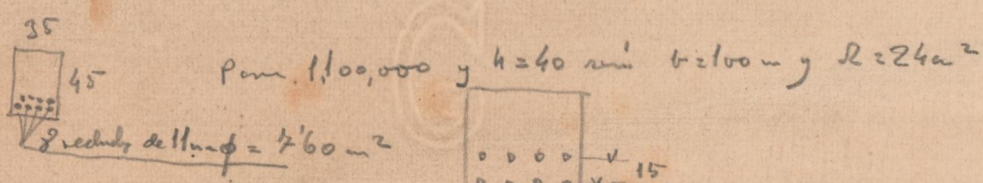
$$q_1 = 6000 \times 1'40 = 8400 \text{ Kg. m.}$$

$$q_2 \times 500 = P_2 \times 3'10 \Rightarrow q_2 = \frac{P_2 \times 3'10}{500} = \frac{24800}{500} = 4960 \text{ Kg}$$

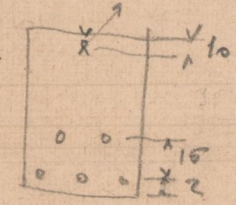
$$q_2 = 5000 \times 1'90 = 9500 \text{ Kg. m.}$$

$$\text{W. 5'60 m. } M_{xy} = 182000 + 840000 = 1022000 \text{ Kg. m.}$$

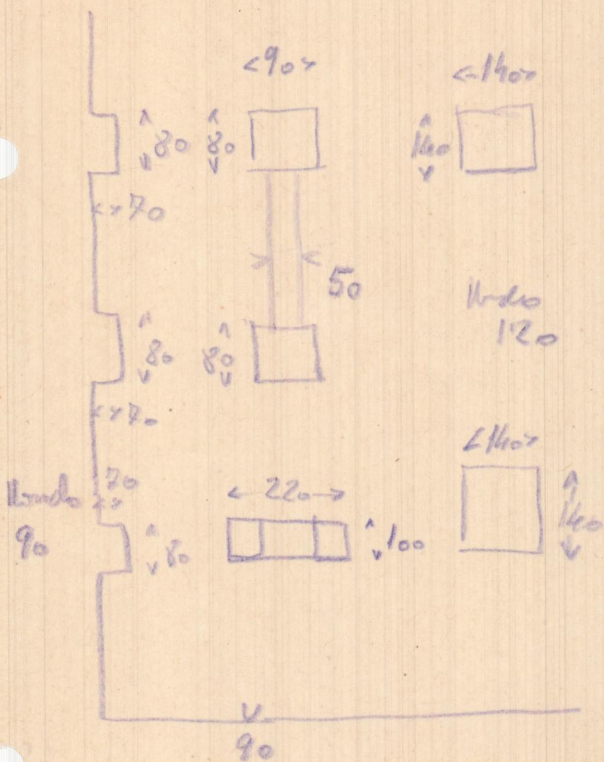
$$\text{" 5'00 m. " } = 182000 + 950000 = 1132000 \text{ Kg. m.}$$



$$M_{xy} = \frac{300 + 330}{2}$$



Nodo Lu.

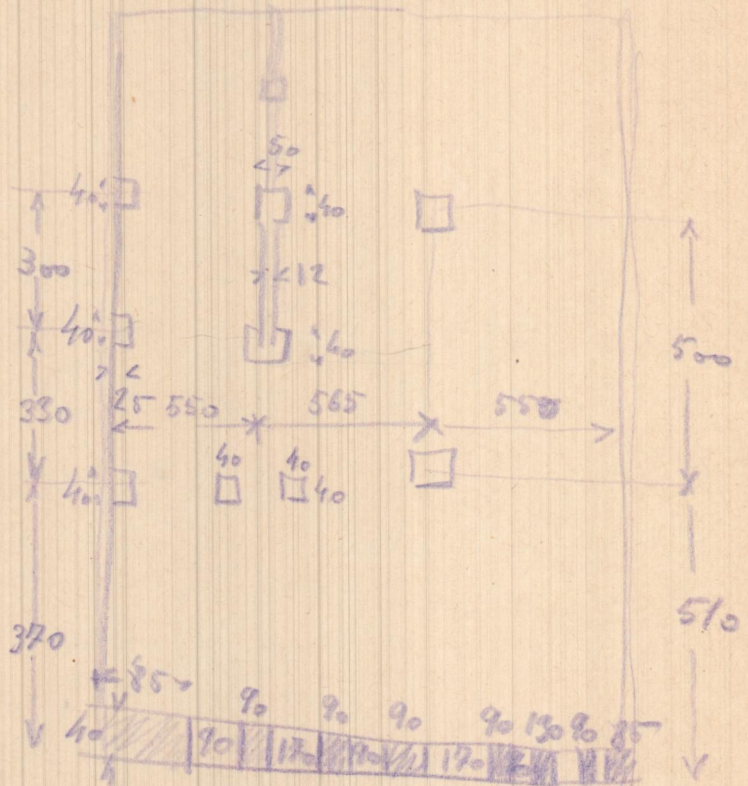


Nodo 20  
90

Nodo 150  
Nada de auto

Arquitectos

i. Maquis de Villar



300  
330  
370  
40  
85  
90  
90  
90  
90  
130  
85  
200  
90  
200  
170  
130  
200  
170  
130  
85

plano pila

200 170  
90 90 810  
200 170 340  
130  
200  

---

1690

13-1-36