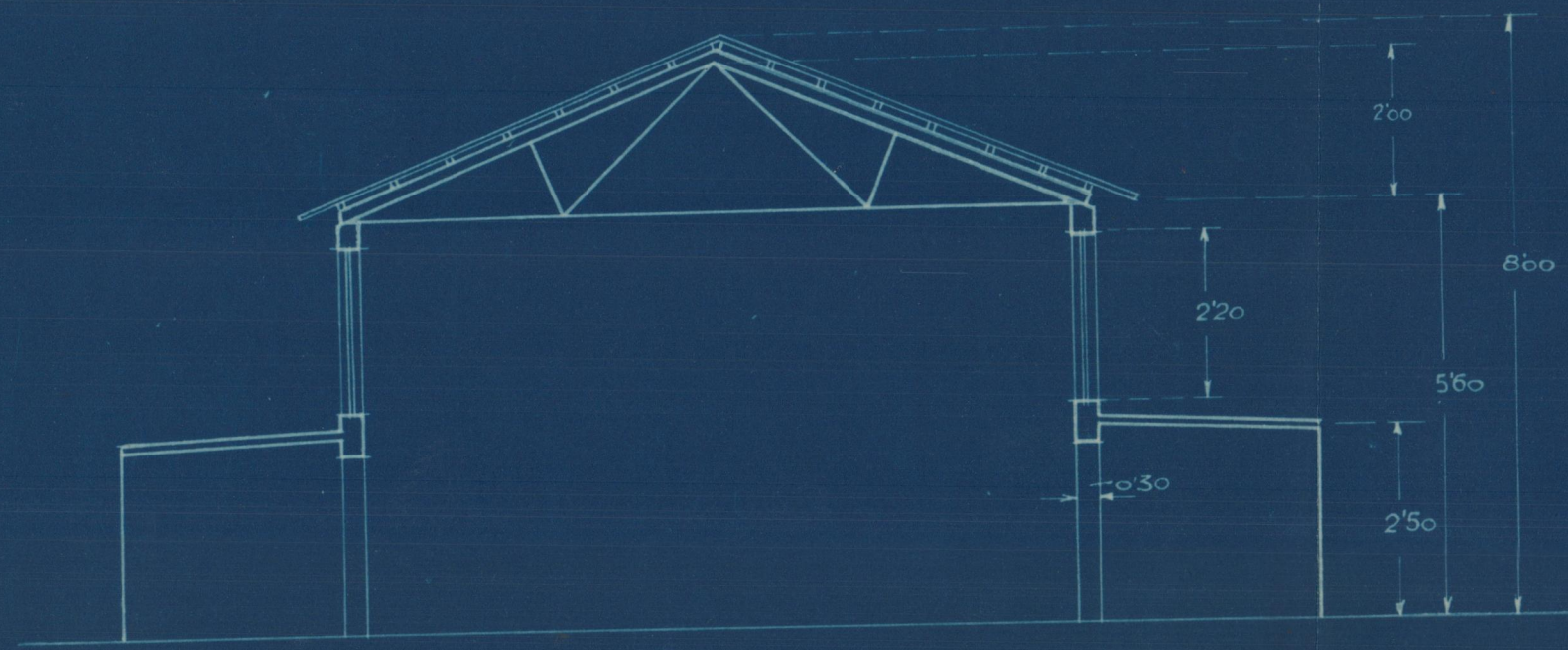
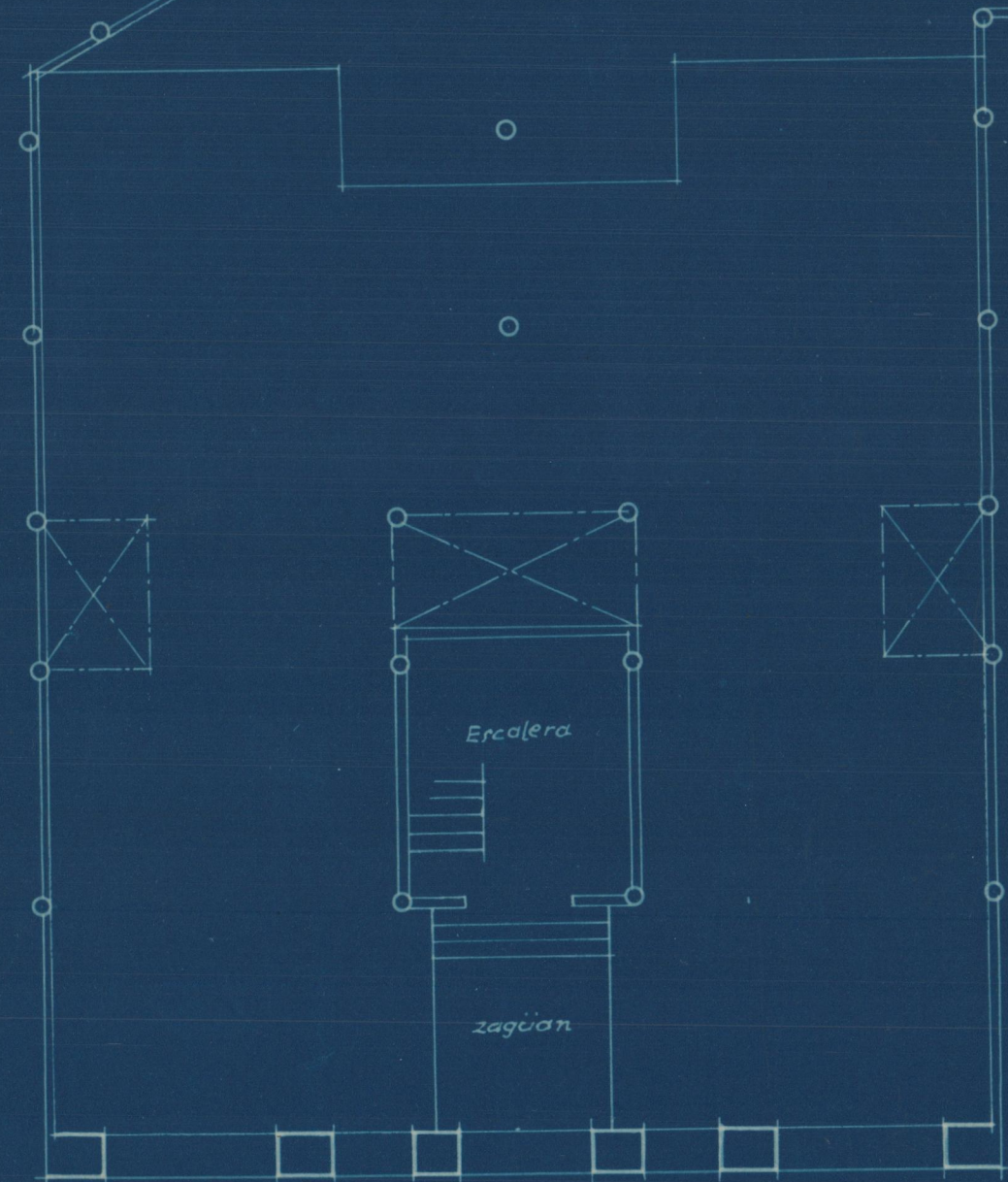
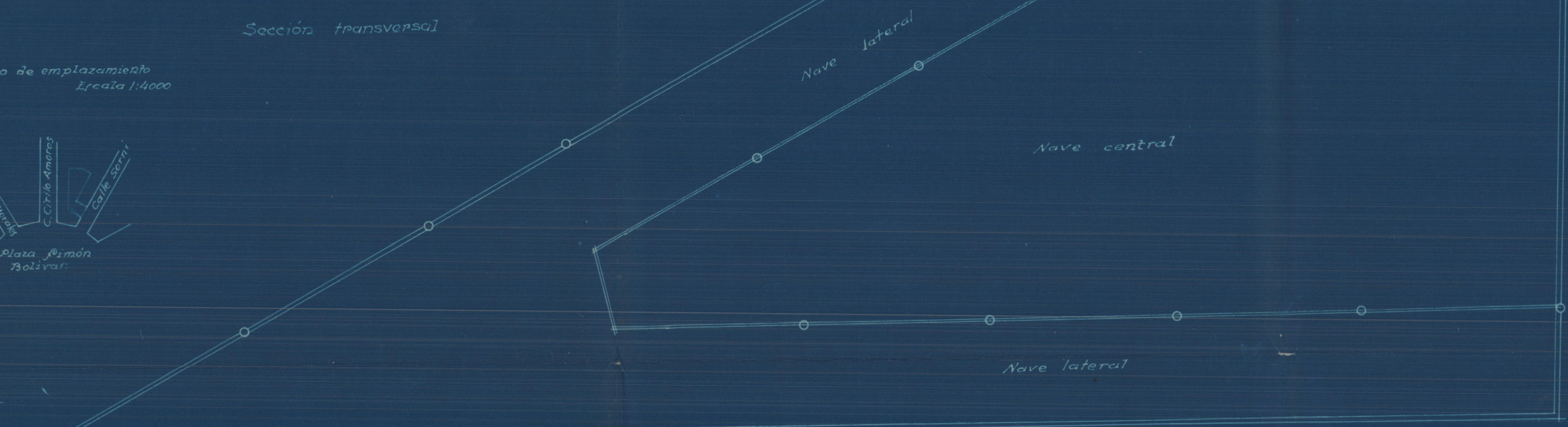
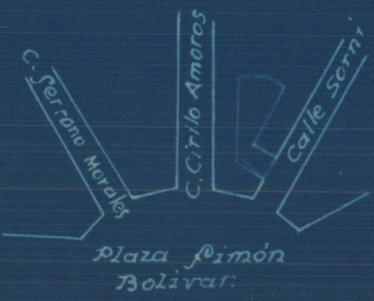


Proyecto de edificio vivienda en la calle de Sorri



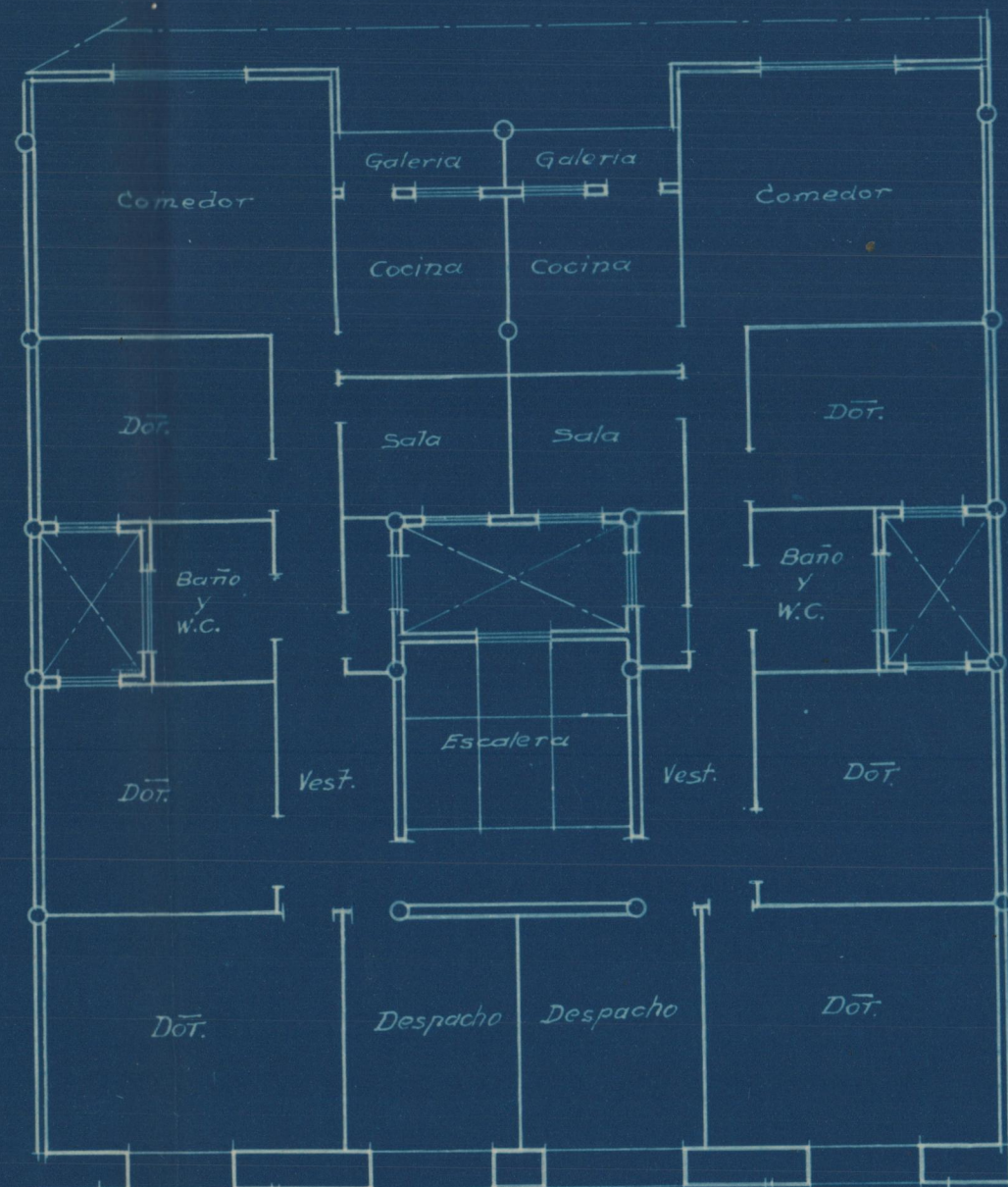
Sección transversal

Plano de emplazamiento
Escala 1:4000

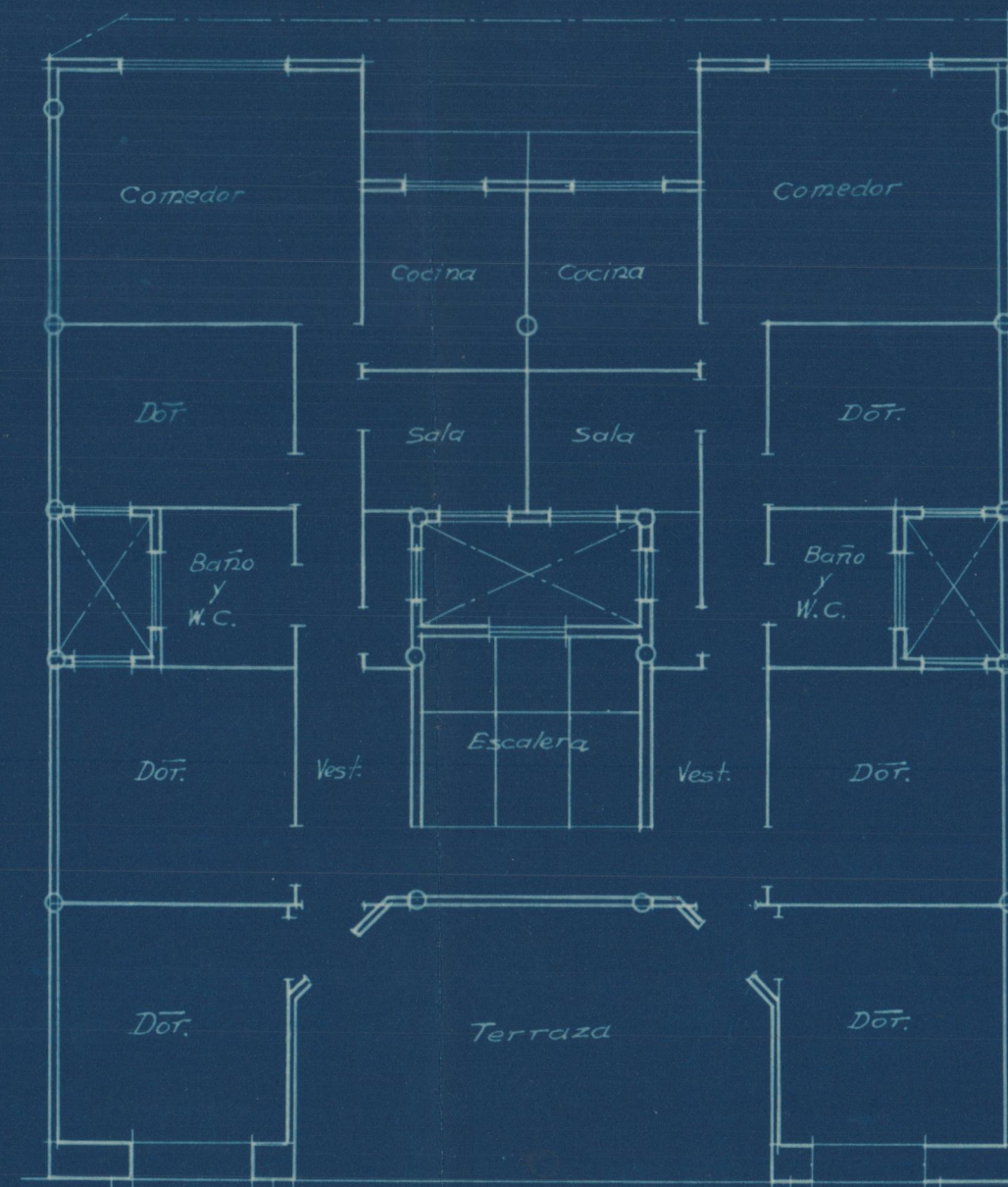


Calle de Sorri

Planta baja



Planta común a pisos

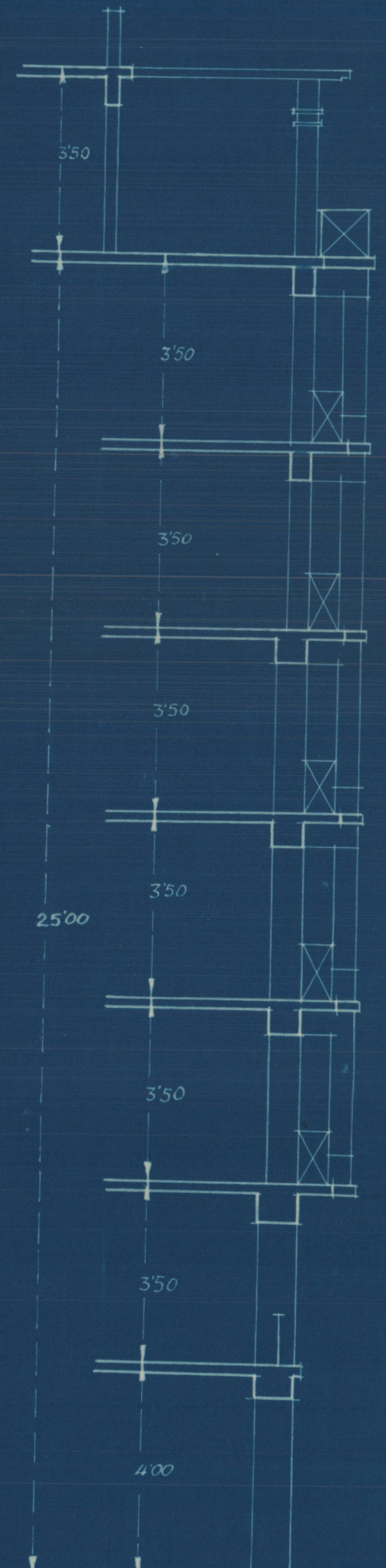


Planta alta



B.

Fachada



Sección A.B.

Escala 1/100
Valencia 12 Octubre 1933
El Arquitecto,

[Handwritten signature]