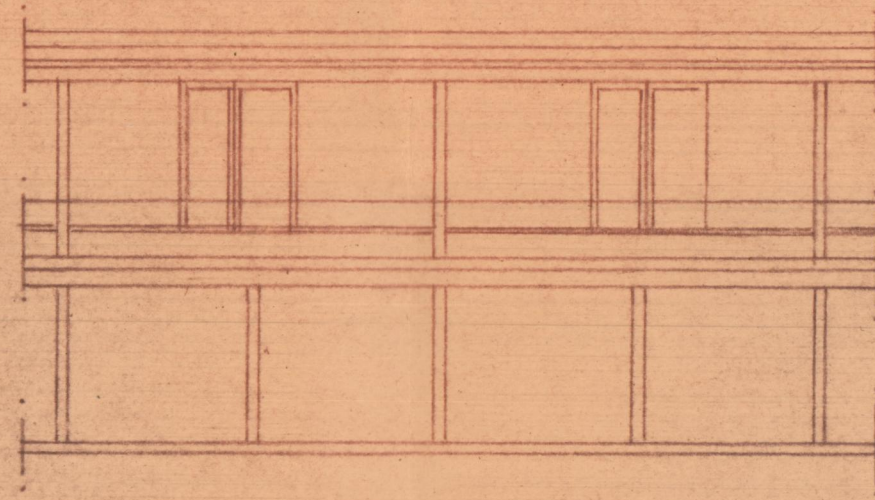
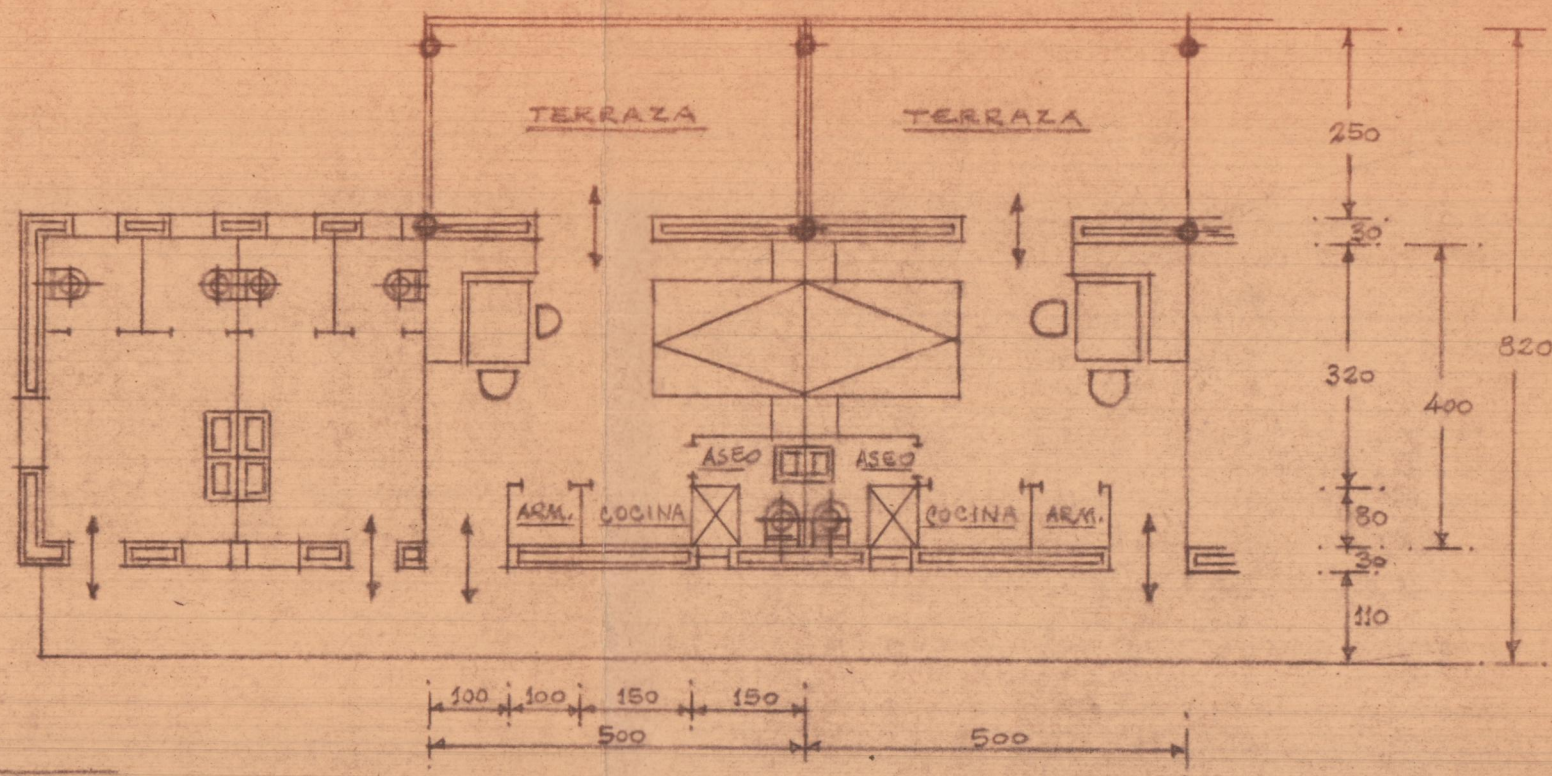


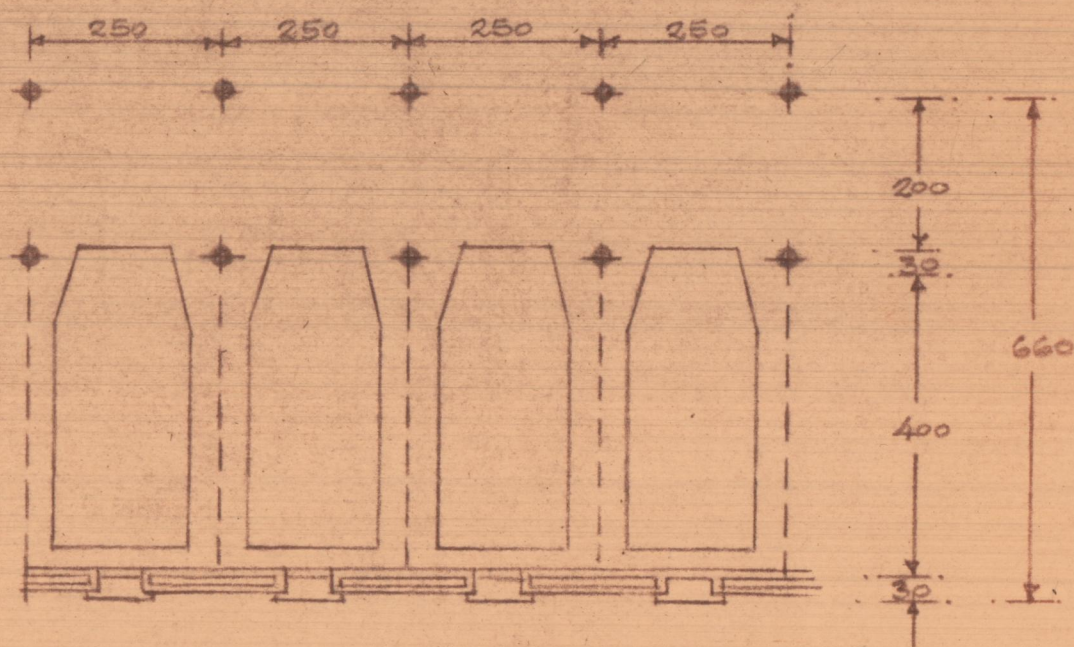
Sección transversal



Frente



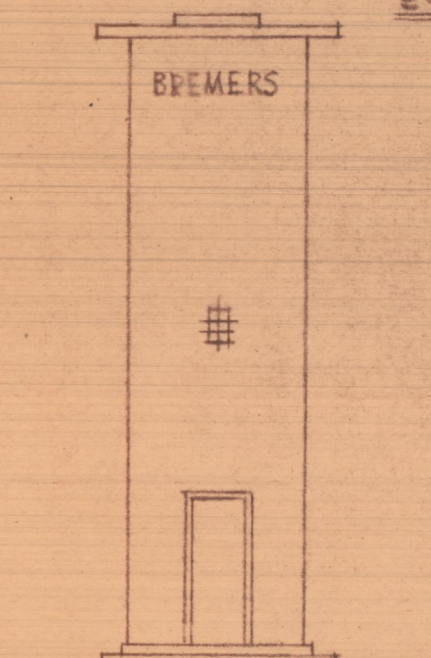
Alto vivienda



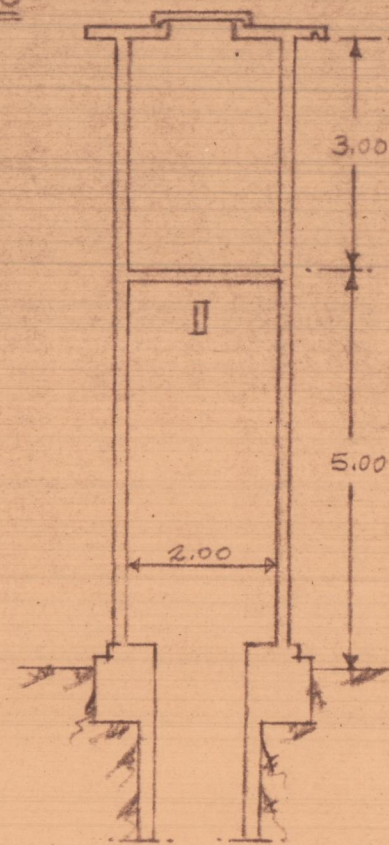
Bajo garaje

TORRE DE AGUA

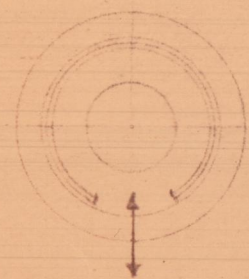
E=1:100



Frente



Sección vertical



Frente

HOTEL EN "LAS ROTAS" DENIA PARA
D. GERO BREMER ESCALA=1:100

Valencia y Diciembre de 1955
EL ARQUITECTO