

BANCO

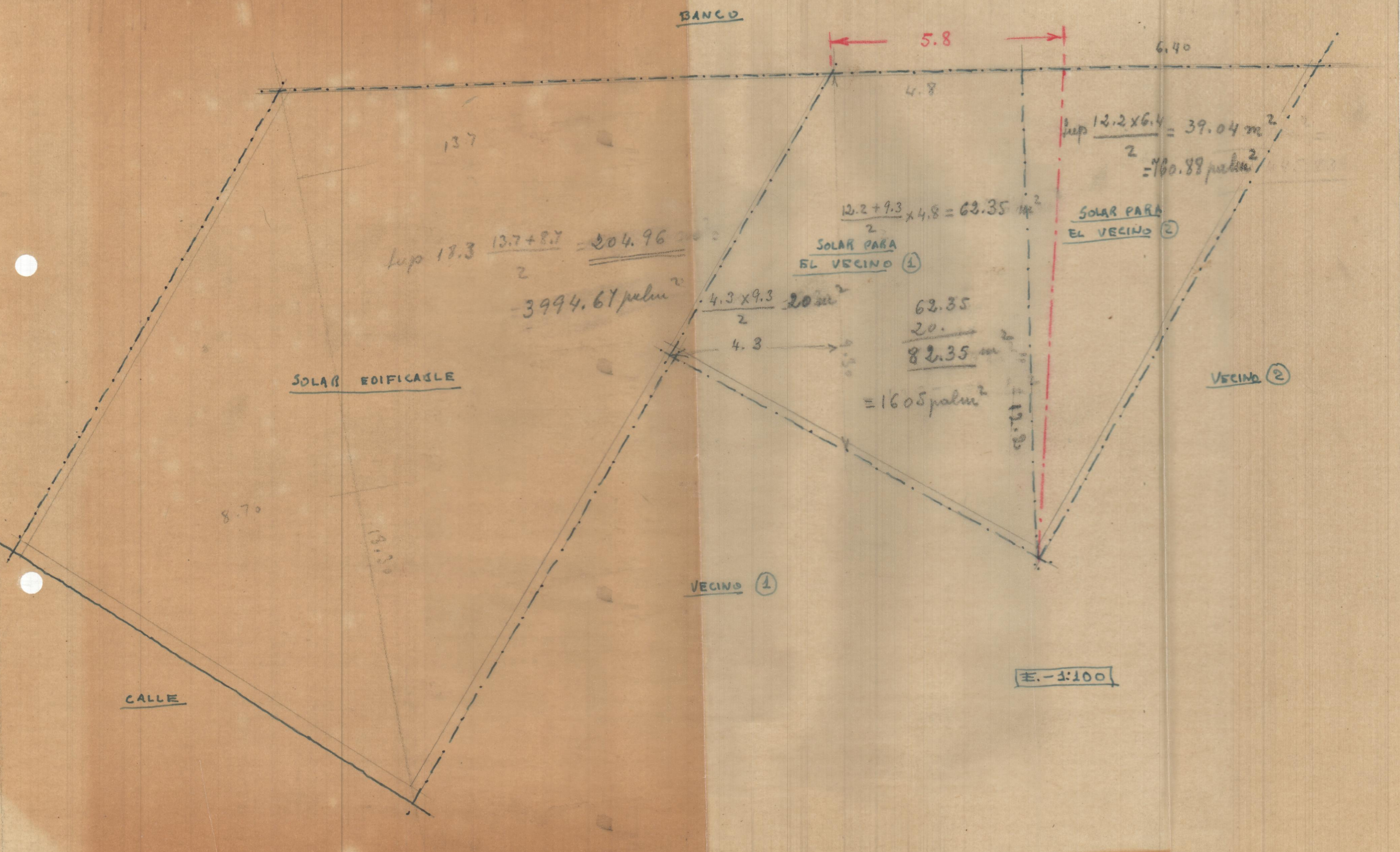
CALLE

SOLAR EDIFICABLE

VECINO ①

VECINO ②

E.-1:100



13.7

5.8

6.40

4.8

$$\text{Sup } 13.3 \frac{13.7 + 8.7}{2} = 204.96 \text{ m}^2$$

$$= 3994.67 \text{ palm}^2$$

$$\frac{12.2 + 9.3}{2} \times 4.8 = 62.35 \text{ m}^2$$

SOLAR PARA EL VECINO ①

$$\text{Sup } \frac{12.2 \times 6.4}{2} = 39.04 \text{ m}^2$$

$$= 760.88 \text{ palm}^2$$

SOLAR PARA EL VECINO ②

$$\frac{4.3 \times 9.3}{2} = 20 \text{ m}^2$$

$$\frac{62.35}{20} = 3.1175$$

$$= 1605 \text{ palm}^2$$

8.70

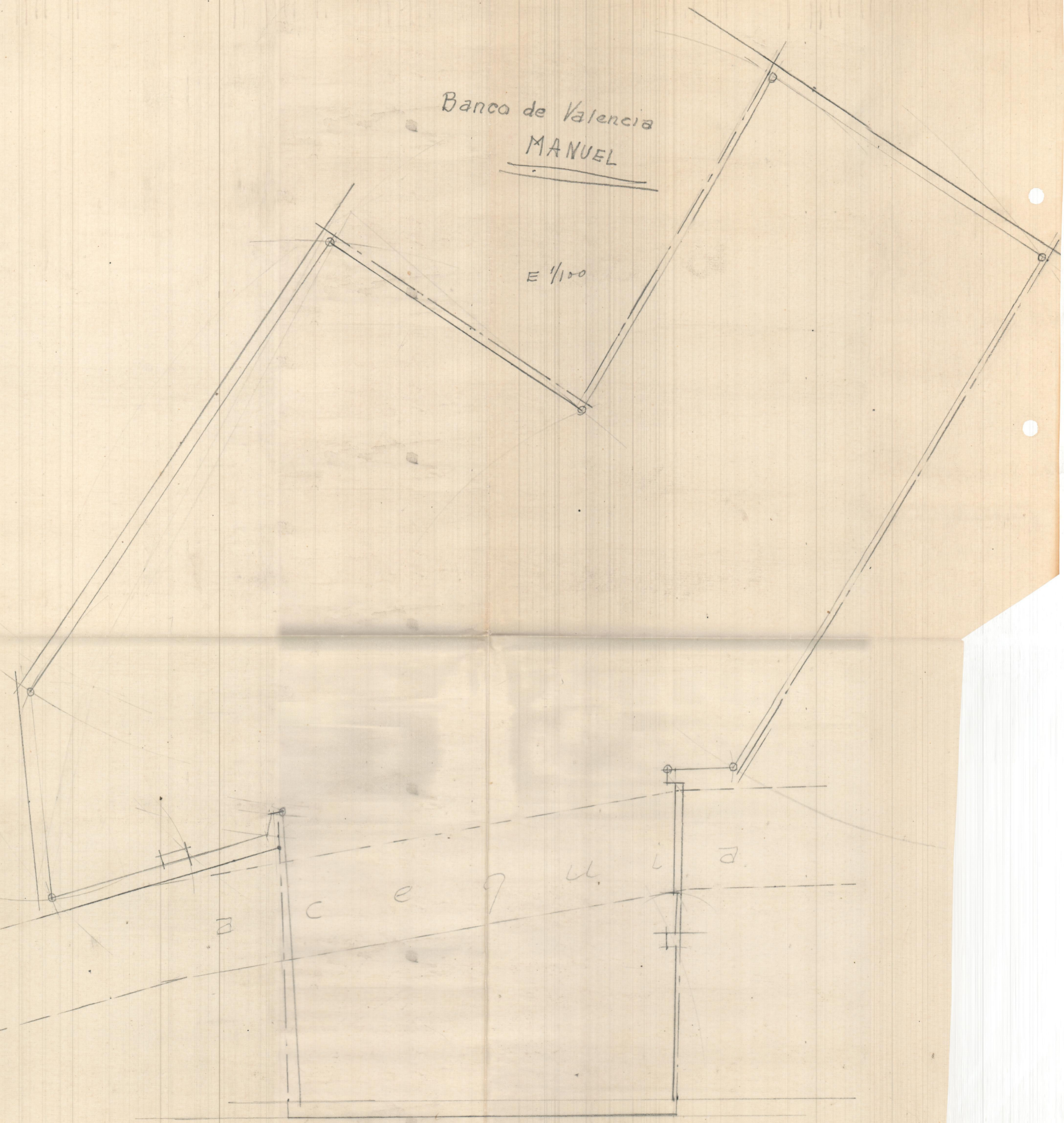
13.30

4.3

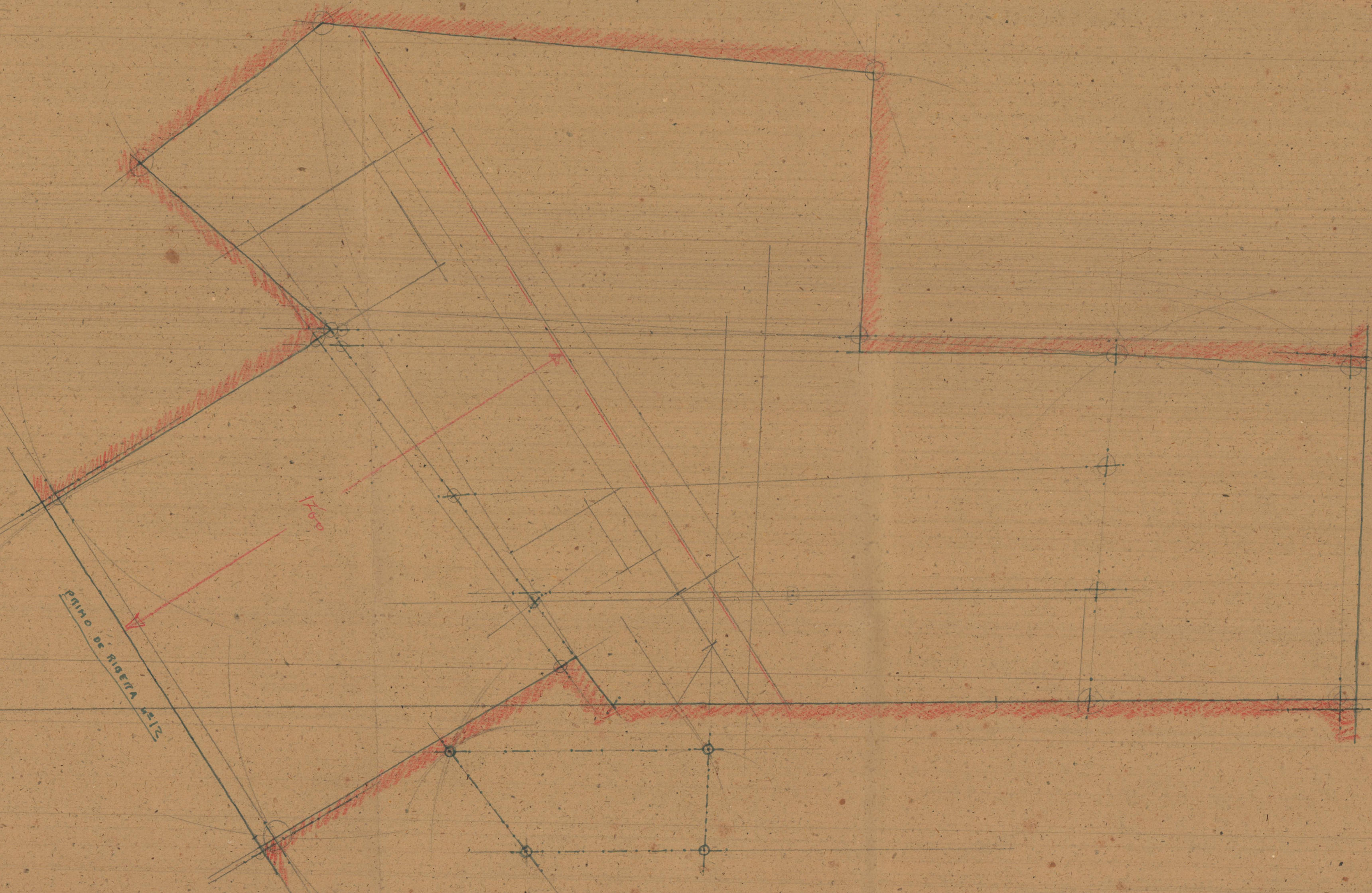
12.2

Banco de Valencia
MANUEL

E 1/100



MANUEL - 13 - Noviembre - 1953
E-1:100



PRIMO DE RIBERA N.º 12

52 DE ZARADORES N.º 5

BANCO DE VALENCIA

MANUEL

Escala = 1:100

Calle del 5º
de Zapadores



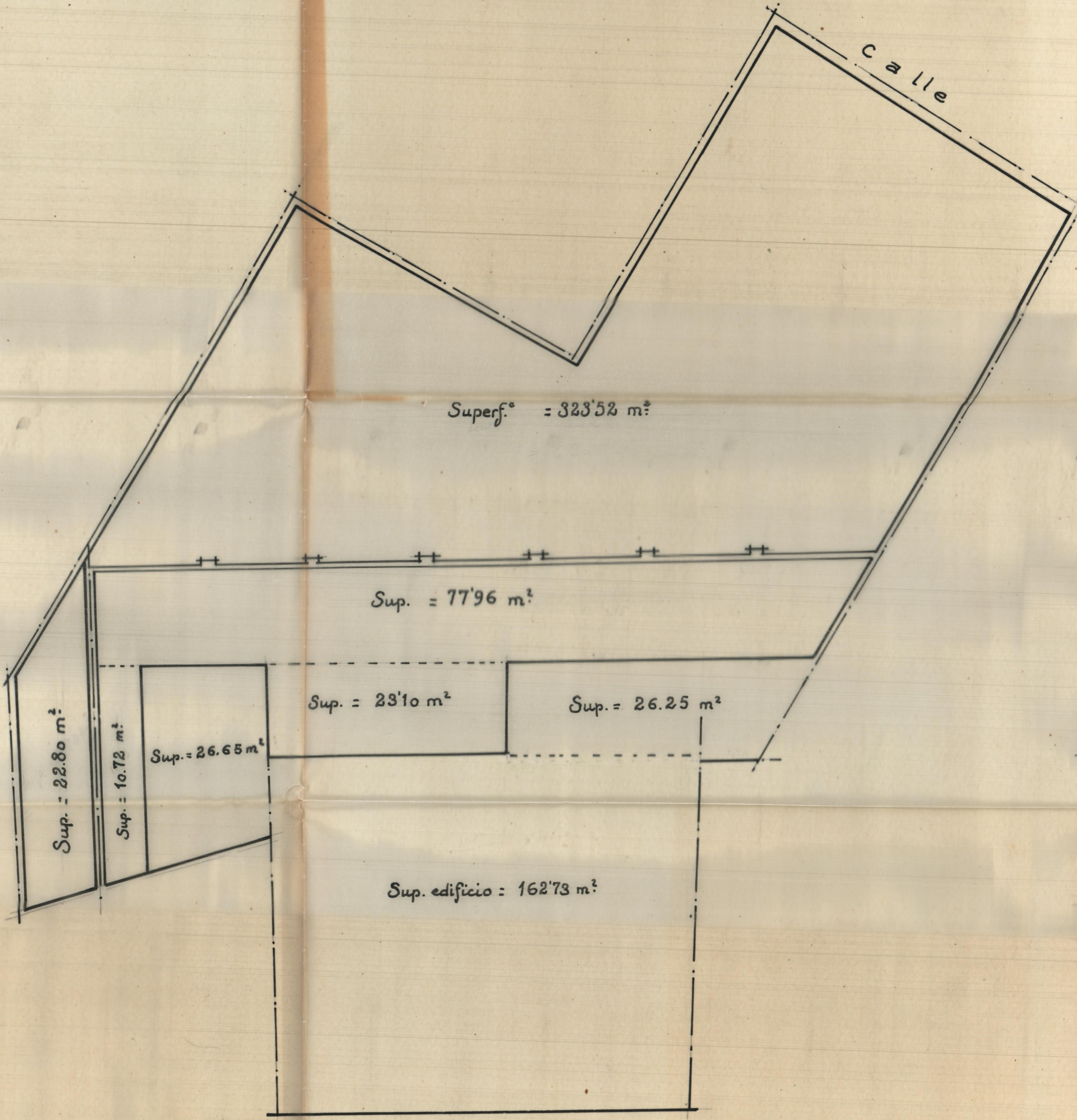
Solar Restante

300

acequia

Superficie a edificar

Calle de Primo de Ribera (Carretera)



Superf.º = 323'52 m²

Sup. = 77'96 m²

Sup. = 23'10 m²

Sup. = 26.25 m²

Sup. = 26.65 m²

Sup. = 22.80 m²

Sup. = 10.72 m²

Sup. edificio = 162'73 m²

Calle

C. Primo de Ribera