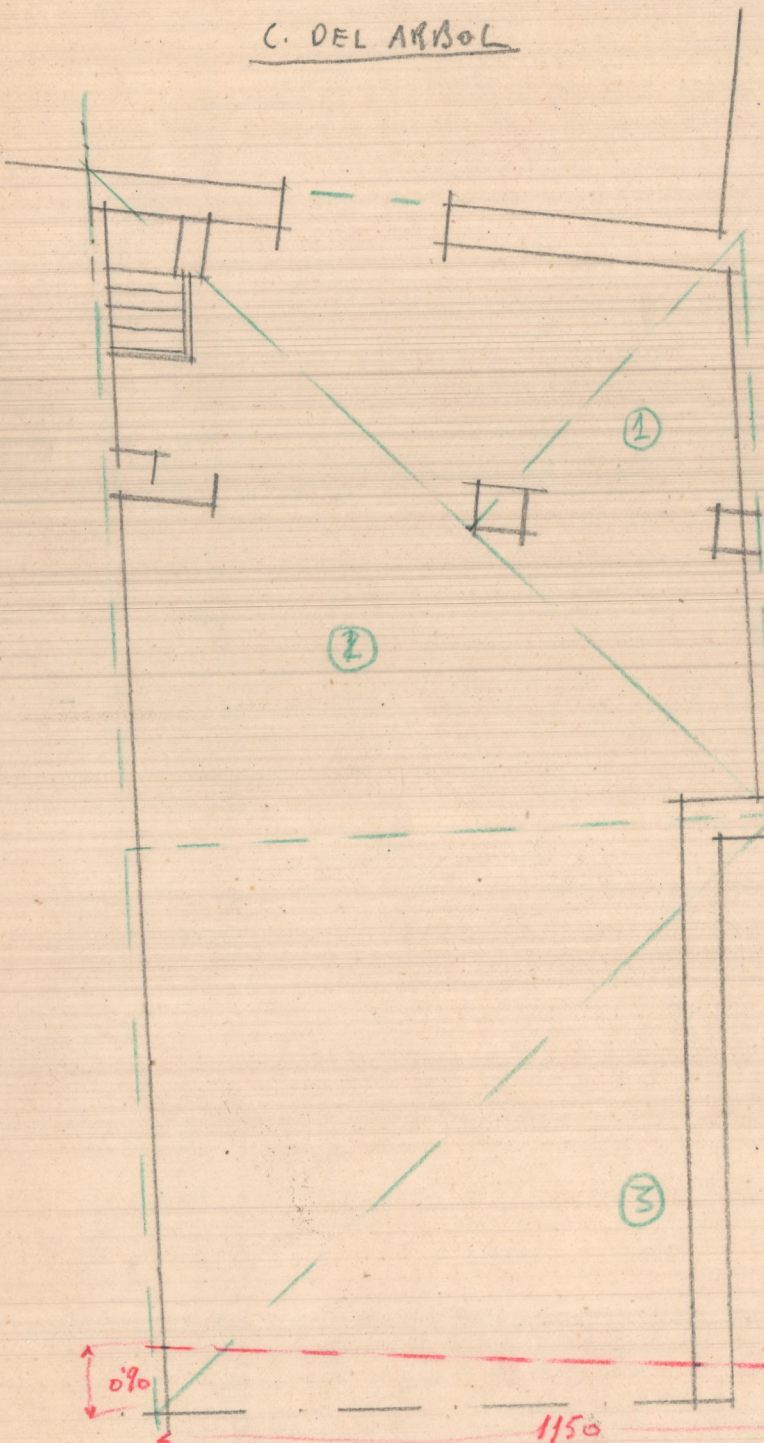


SOLAR Y EDIFICIO SOBRE EL ALBERQUE

C. DEL ARBOL



- ① =  $2'40 \times 5'30 = 65'22 \text{ m}^2$
  - ② =  $16'40 \times 8'50 = 139'40 \text{ u}$
  - ③ =  $11'50 \times 7'20 = 88'55 \text{ u}$
  - ④ =  $3'10 \times 7'20 = 23'82 \text{ u}$
- 
- $317'54 \text{ m}^2$   
 $158'72$

Edificio  
 $860 \times 420 = 36'12 \text{ m}^2$

Solar  
 $317'54 \text{ m}^2 \times 50\% = 158'72$

Edificio  
 $36'12 \times 40\% = 14'44'8$

Valor final  $173'21'8$

$158'72 \text{ m}^2$   
 $6'61 \text{ u}$   

---

 $152'16 \text{ m}^2$

$\frac{0'90 + 0'25}{2} \times 11'50 =$   
 $2 = 6'61 \text{ m}^2$

~~$317'54 \text{ m}^2$~~   
 ~~$6'61 \text{ u}$~~   

---

 $310'93 \text{ m}^2$

