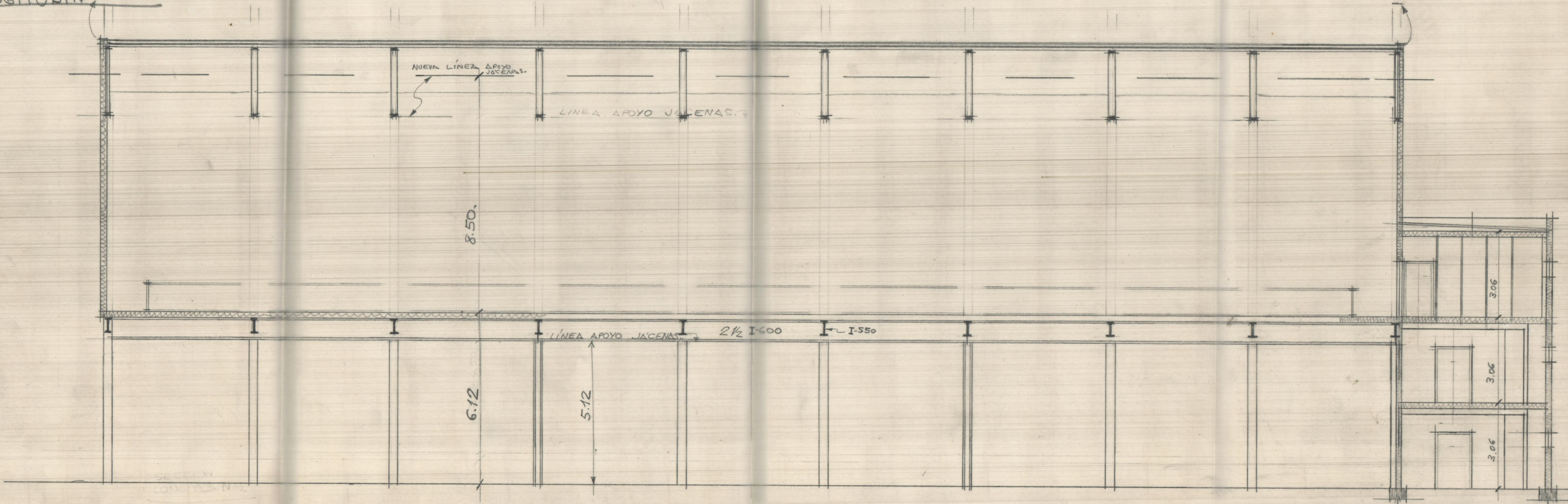


10.10.1910. Nivel  
fuerzas al  
calcular

Recorder altura

SECCION  
LONGITUDINAL



¡ ojo! al colocar  
leventar los jicenas.

612  
17  
537

85 5  
35 17  
0

NUEVA LINEA  
APOYO JACENAS.

P. = 10%

LINIA APOYO JACENAS.

8.50

6.12

5.12

5.37

PATIO

CALLE

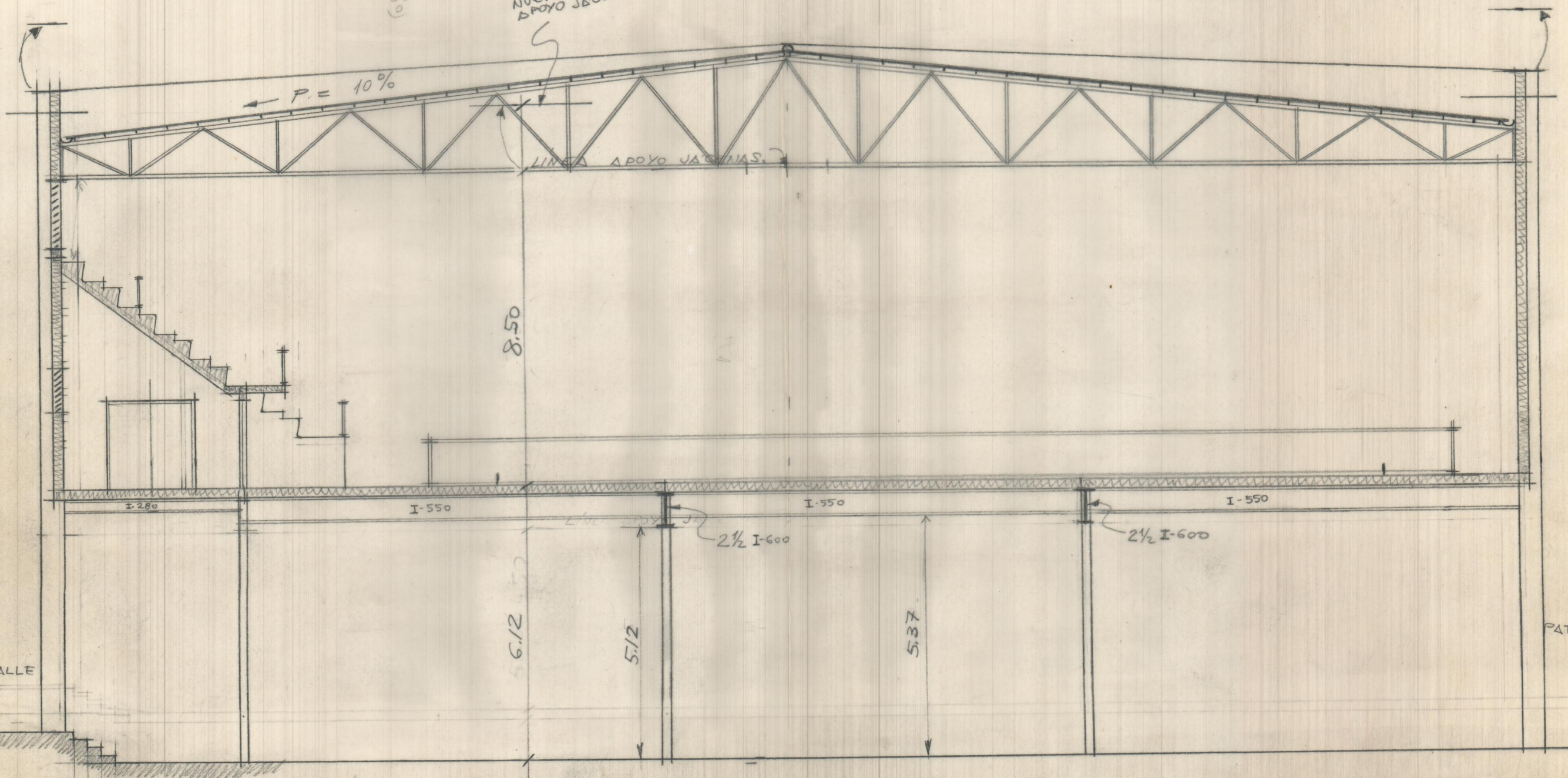
SECCION  
TRANSVERSAL

ESC = 1:100

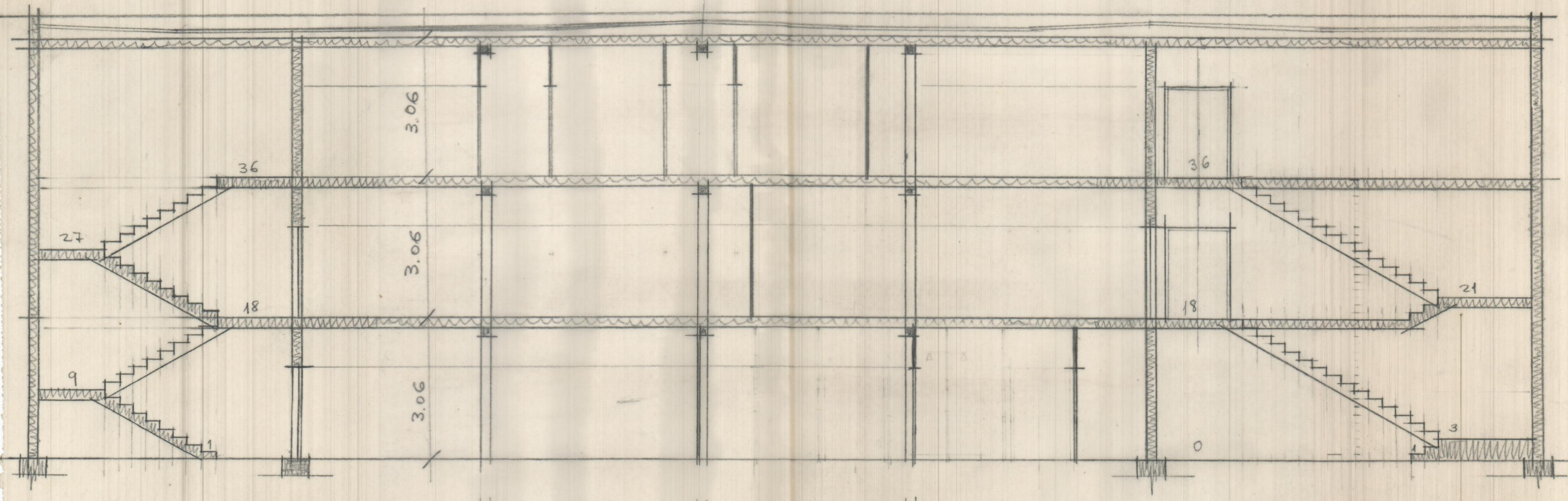
612  
17  
537

525  
17  
542

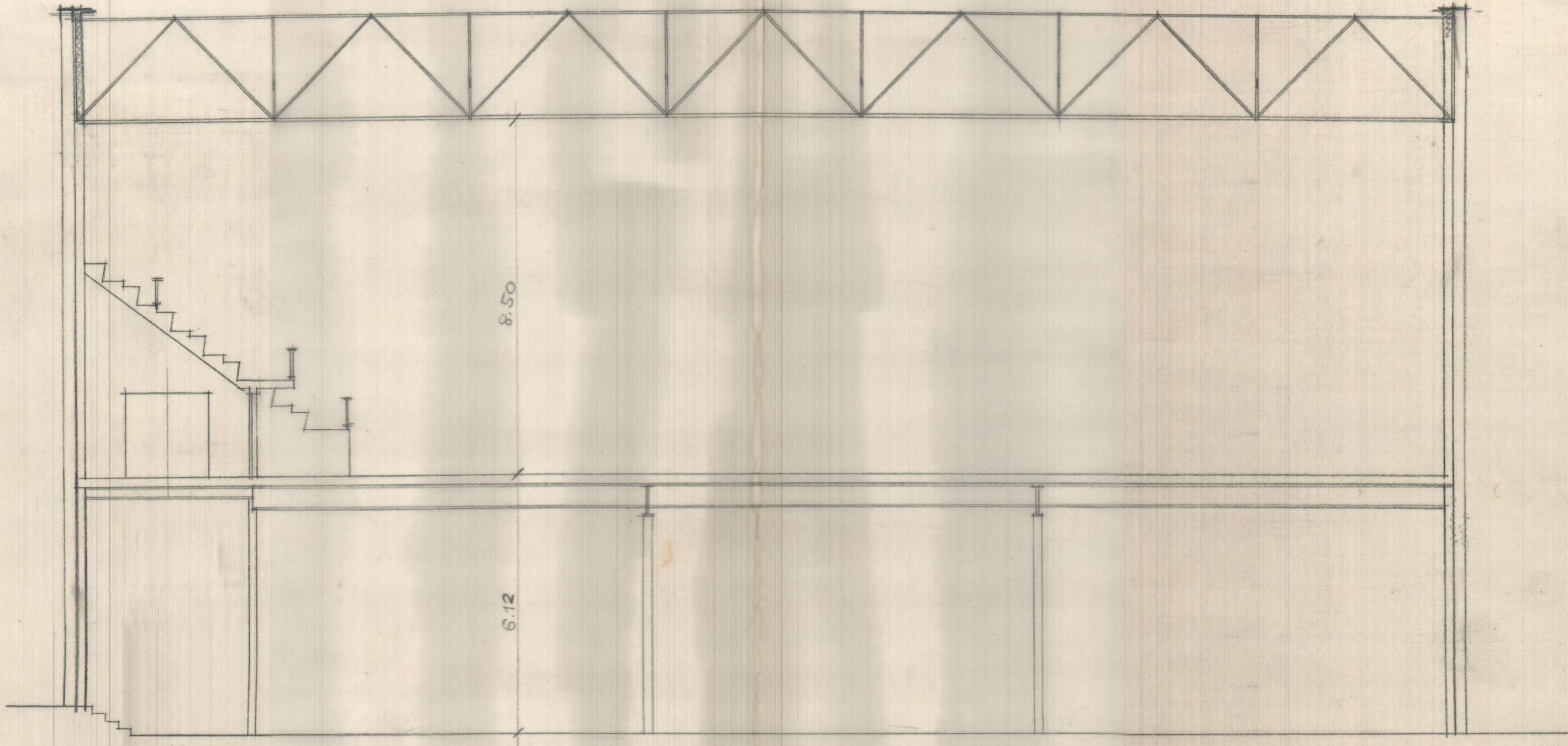
529  
17  
546

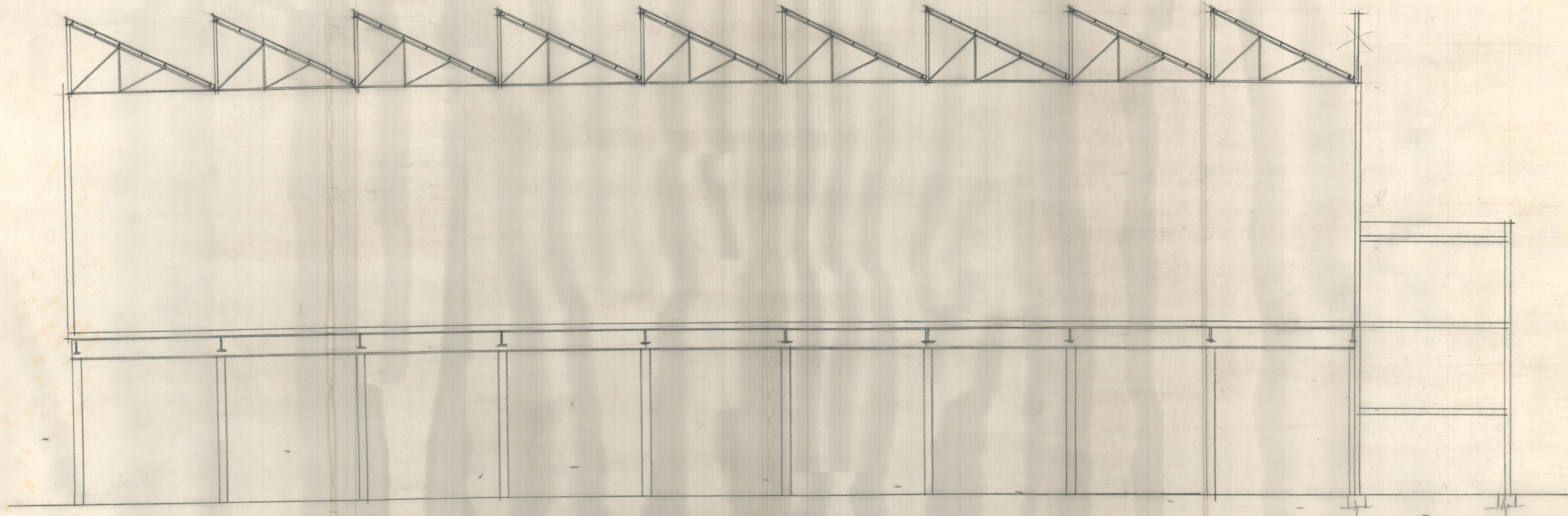


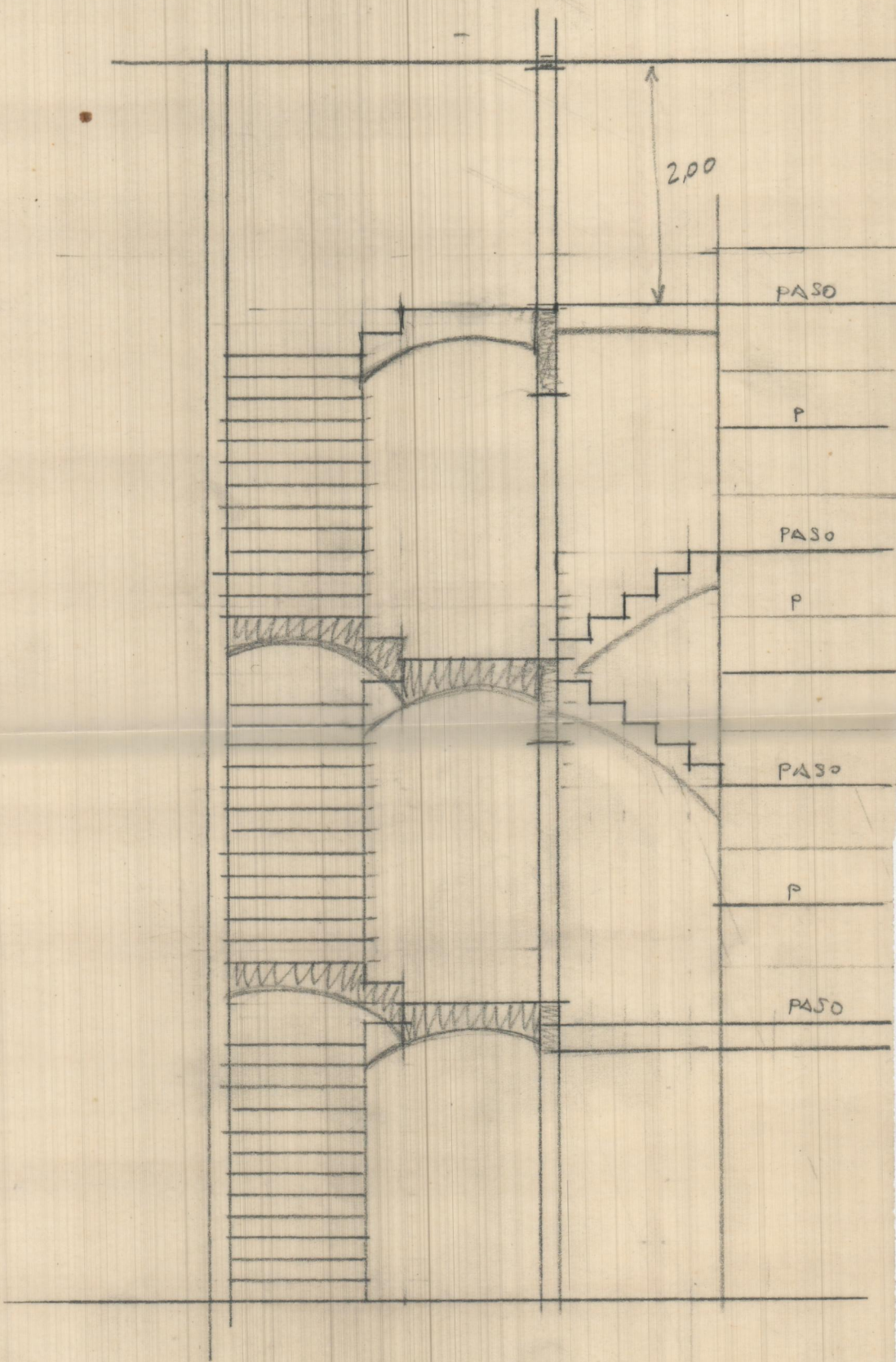
17'3  
346  
451  
10'9  
15'0  
3  
95



SECCION  
POR  
ESCALERAS.







SECCION (A) - (B)

ESC = 1:50