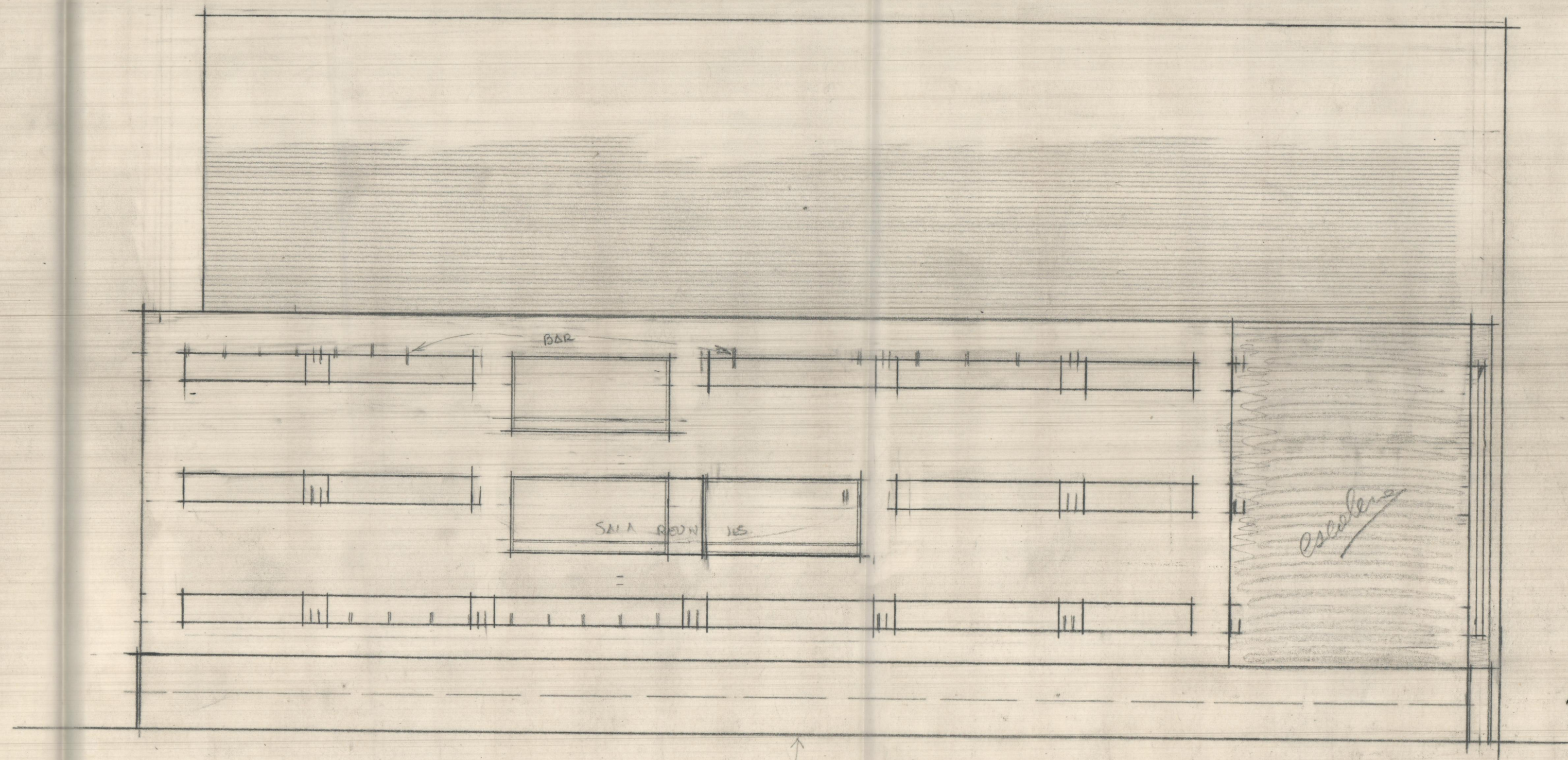
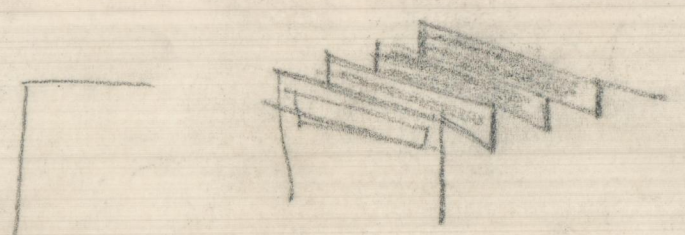
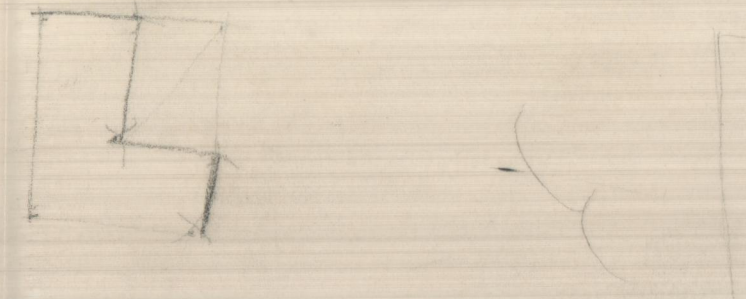
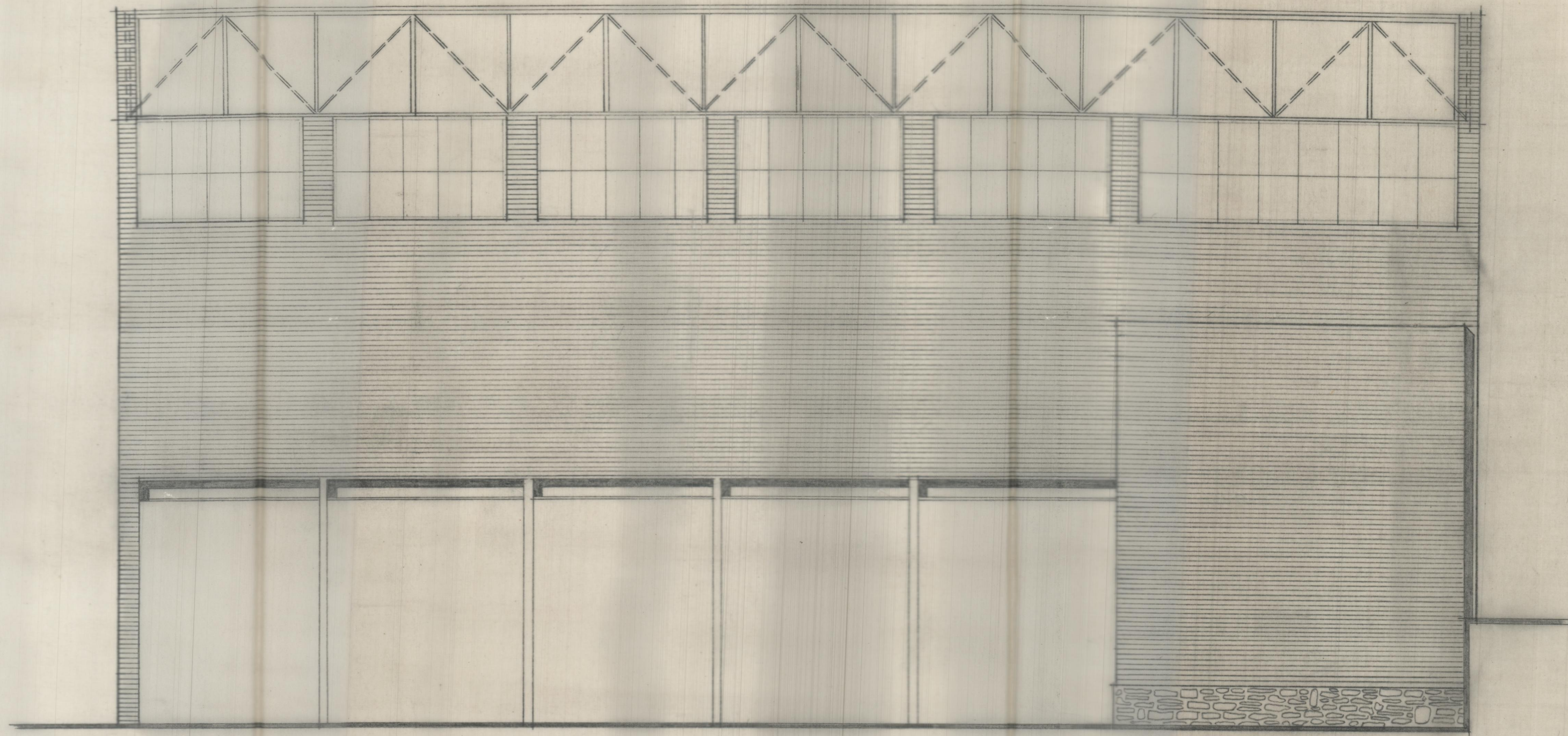


NORTE (A LOS CHINETS)



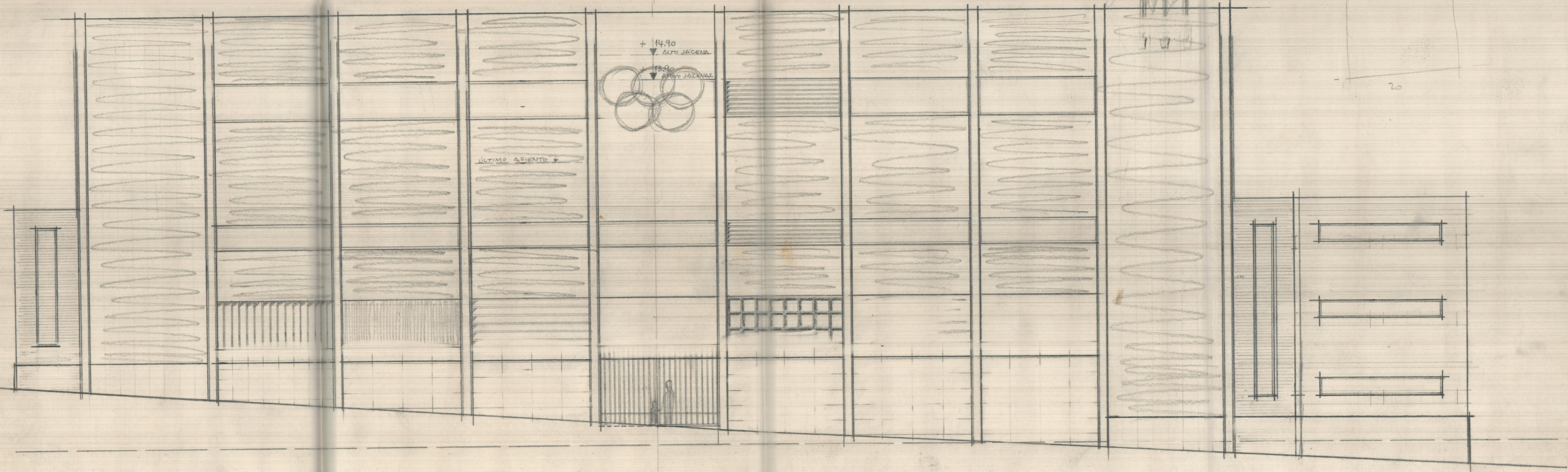
SUR (A LA VIA)





NORTE. (al patio.)

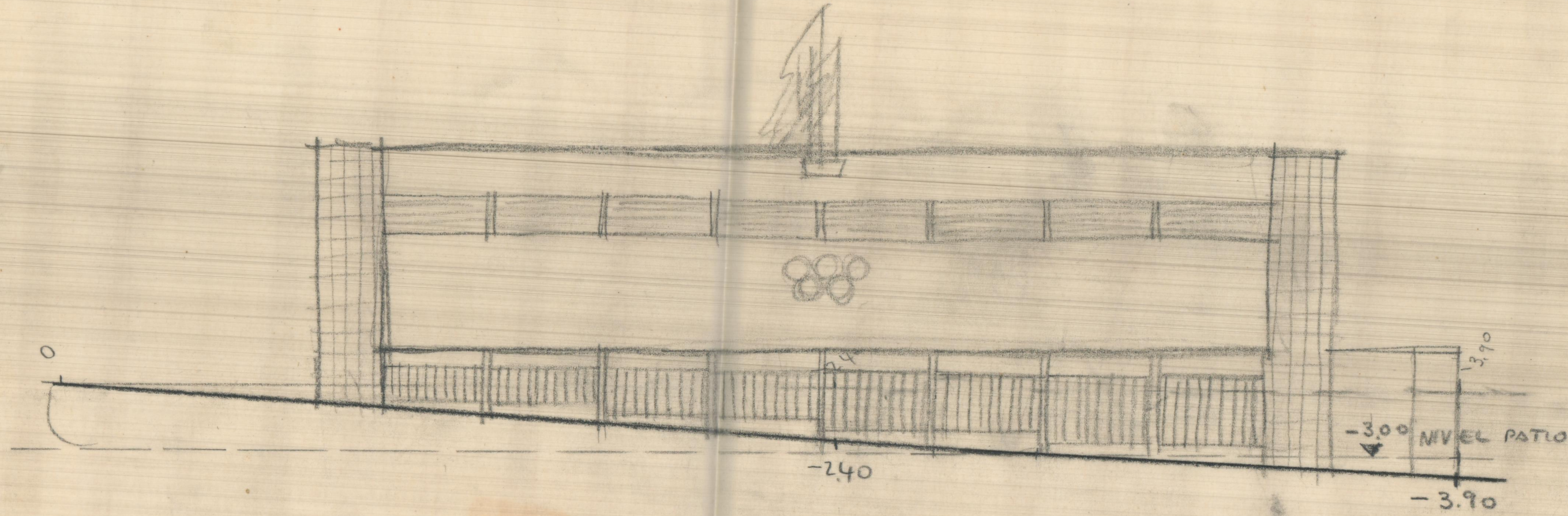
PISTA POLIDEPORTIVA
COLEGIO LA SALLE
PATERNA (ESC. 1:100)



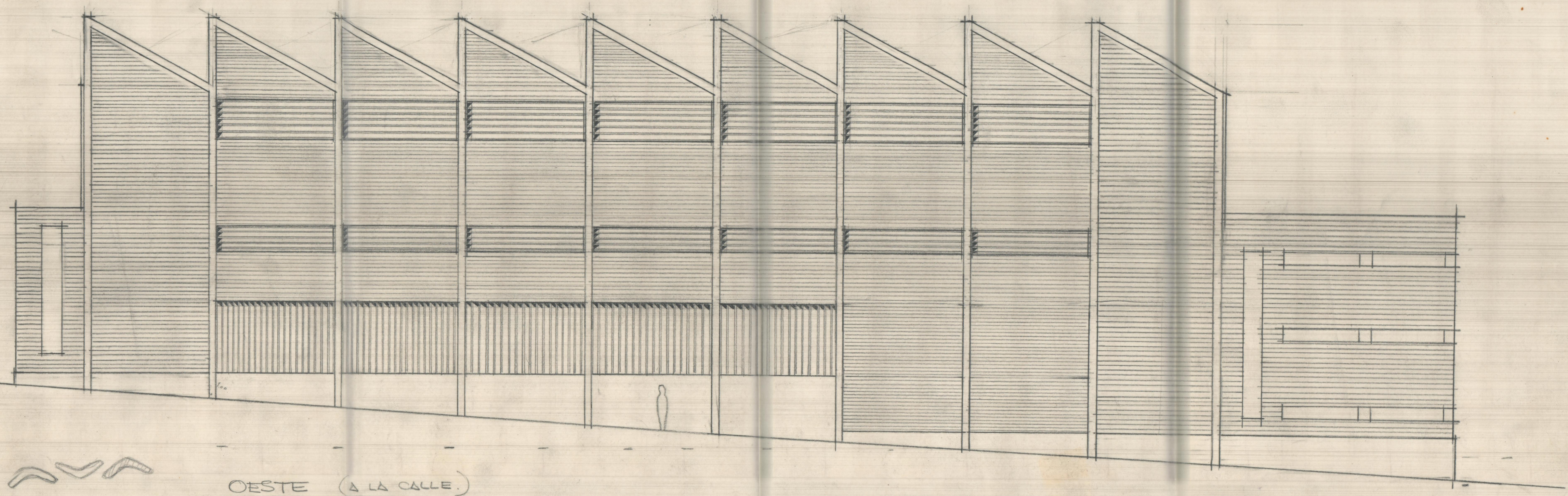
ALZADO
PRINCIPAL

20

u

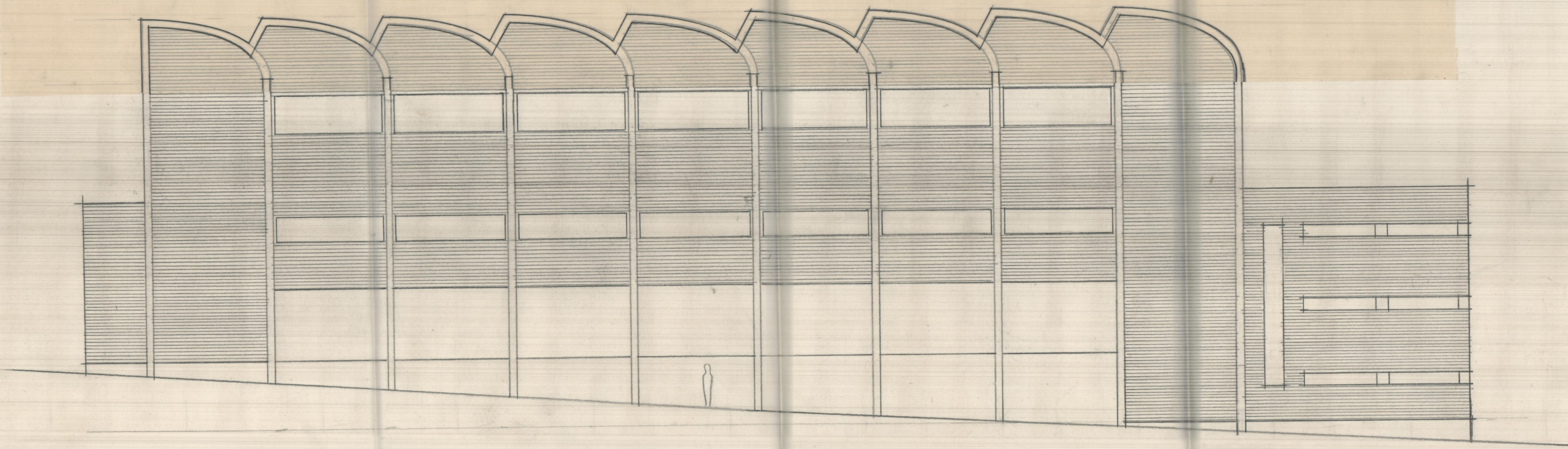


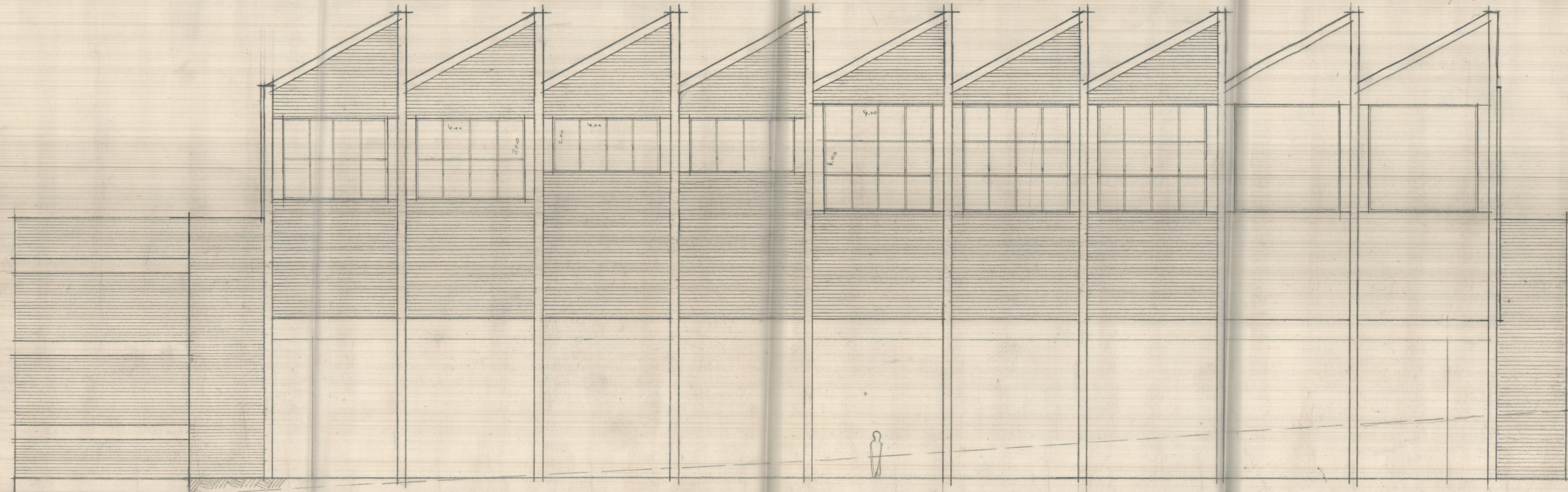
POLIDEPORTIVO
LA SALLE



OESTE (A LA CALLE.)





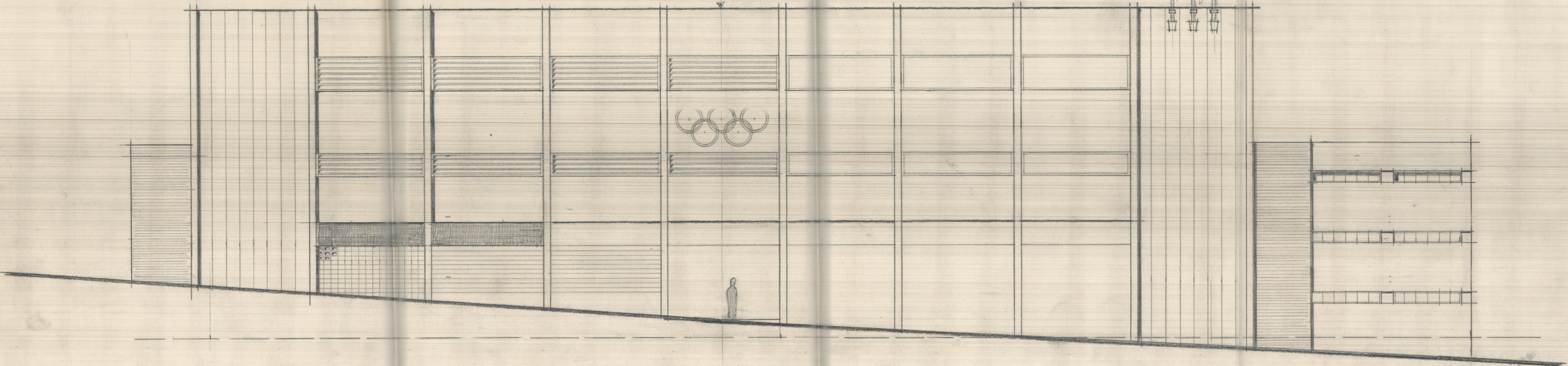
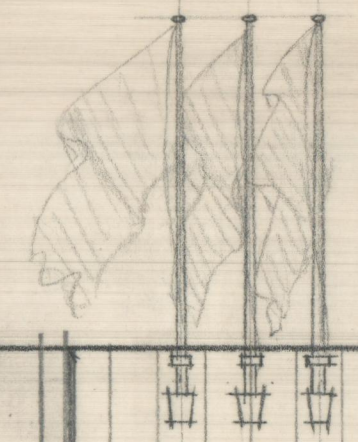


ESTE (ALZADO AL PATIO)

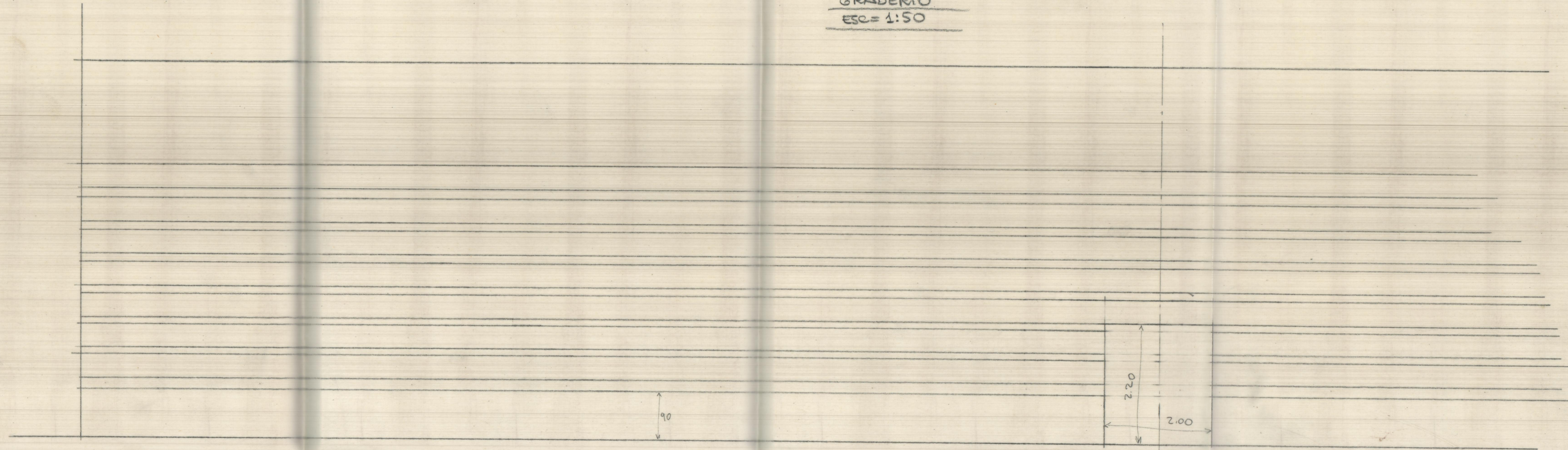
ALTURA EDIFICABLE
c

En frente hay un edificio de planta baja y 4 pisos.

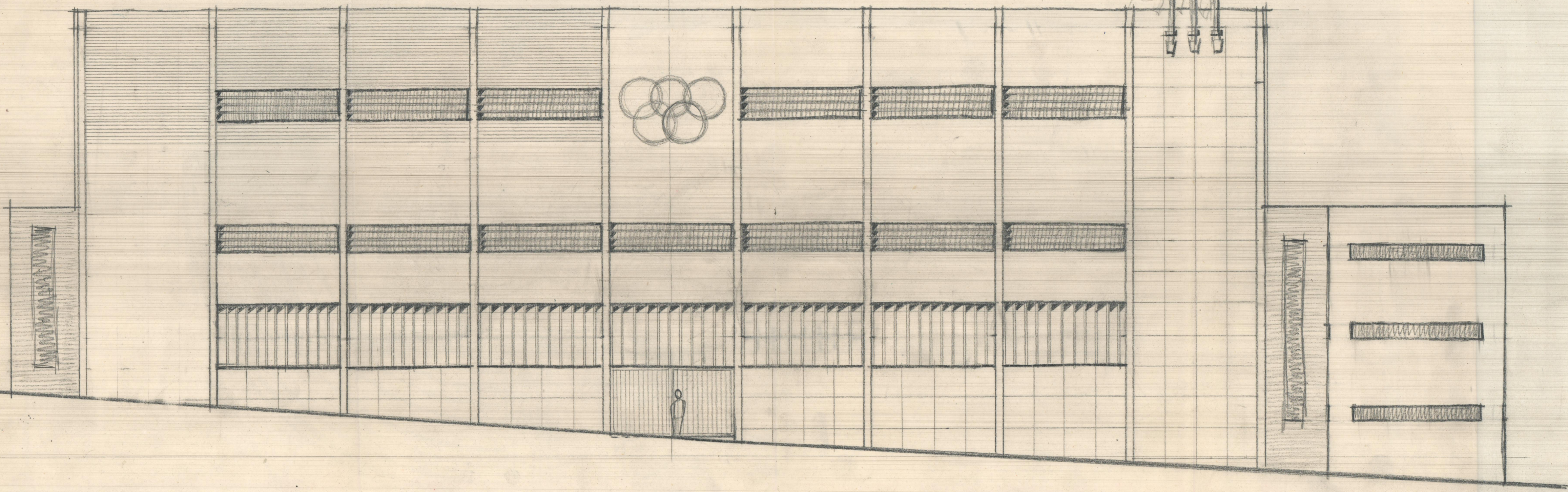
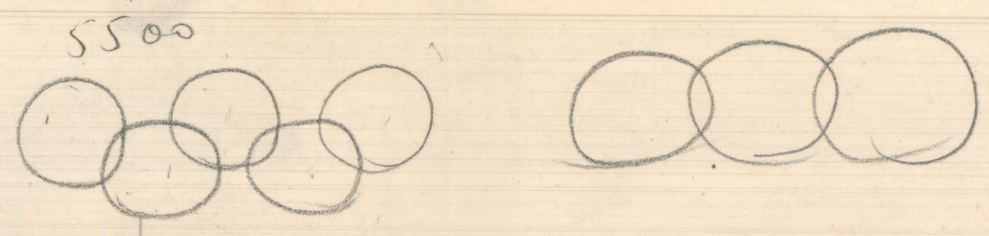
+1350 ~

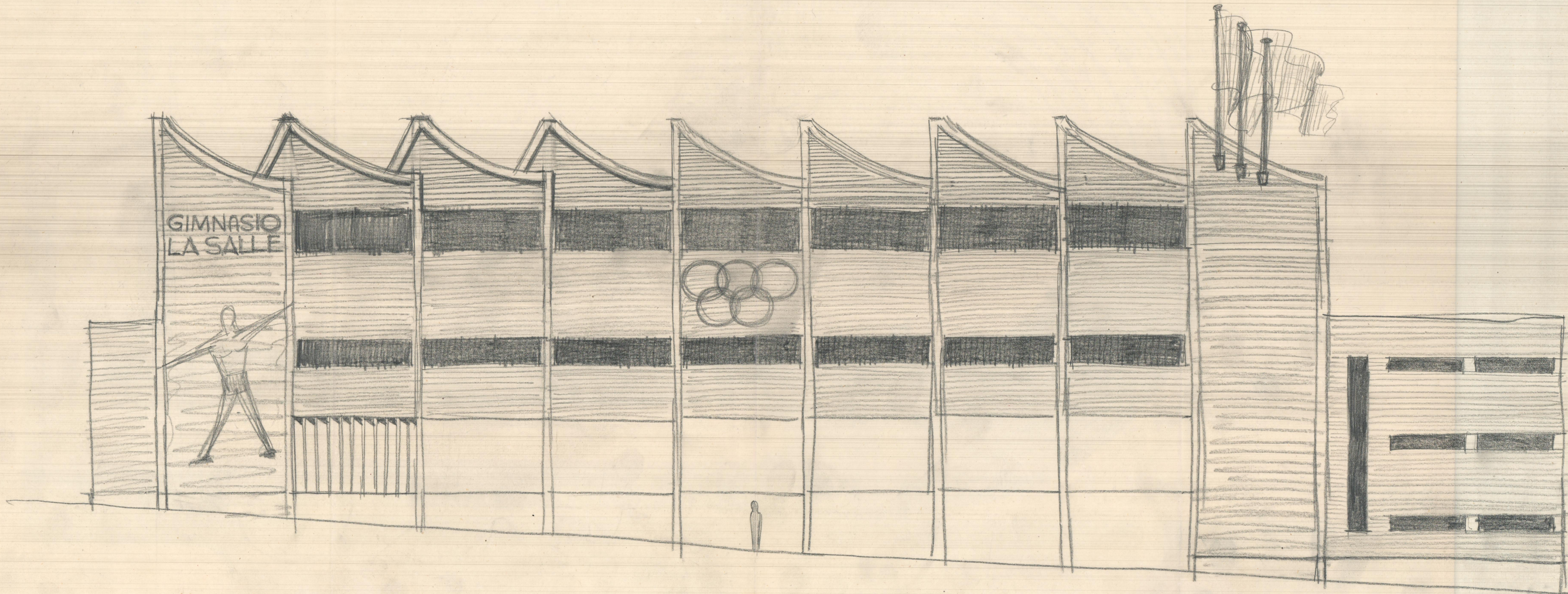


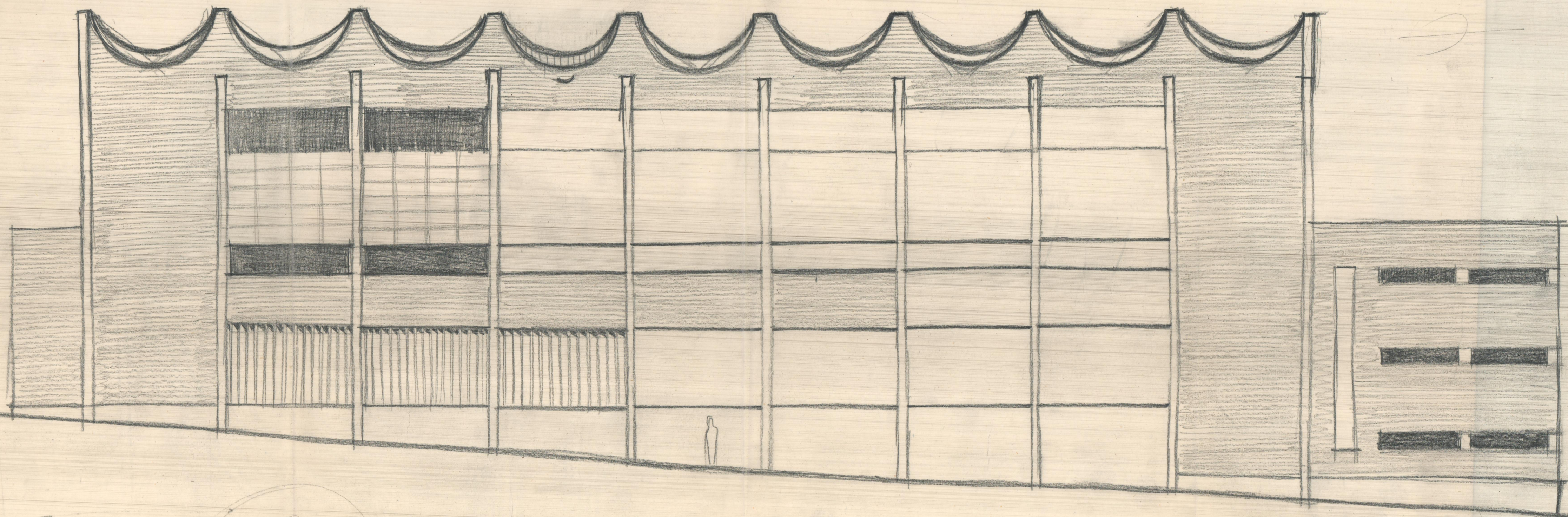
ALZADO
GRADERIO
ESC = 1:50

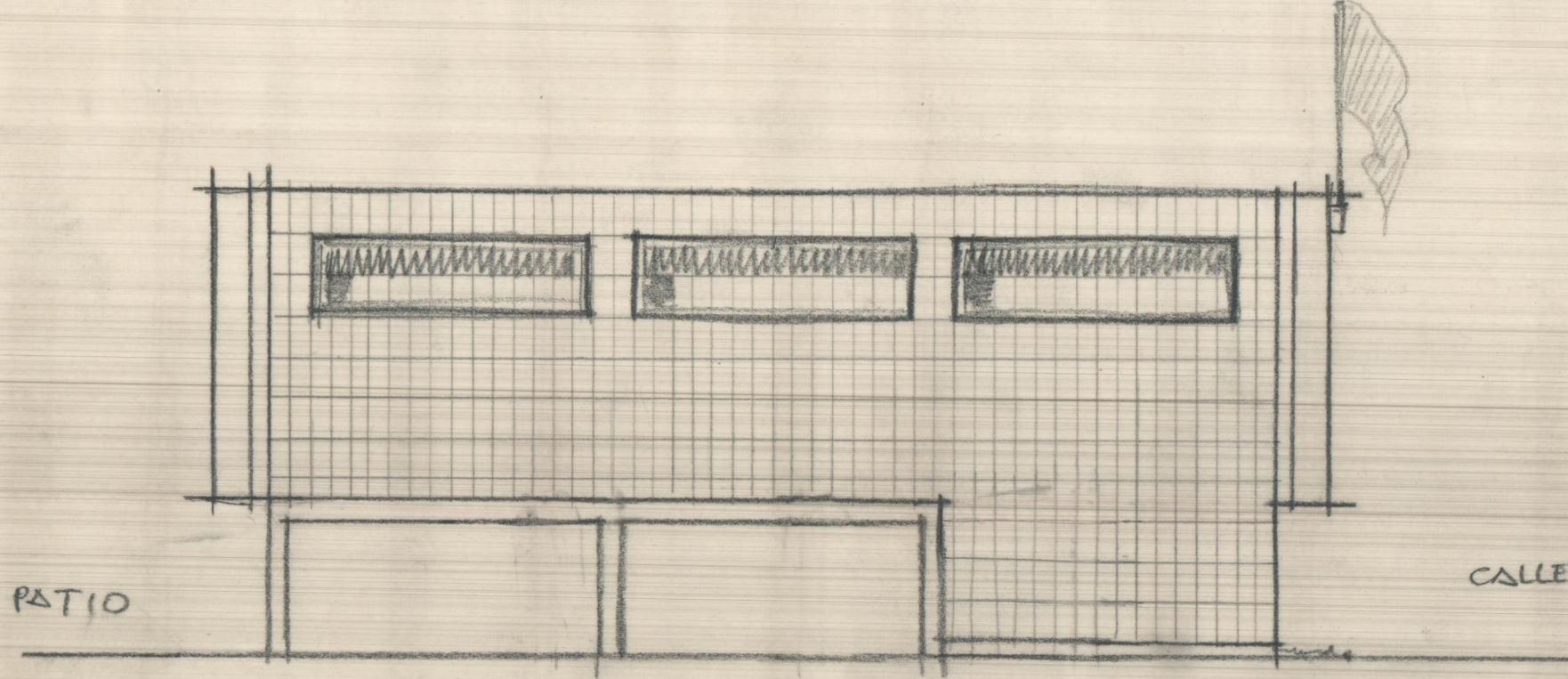


5500



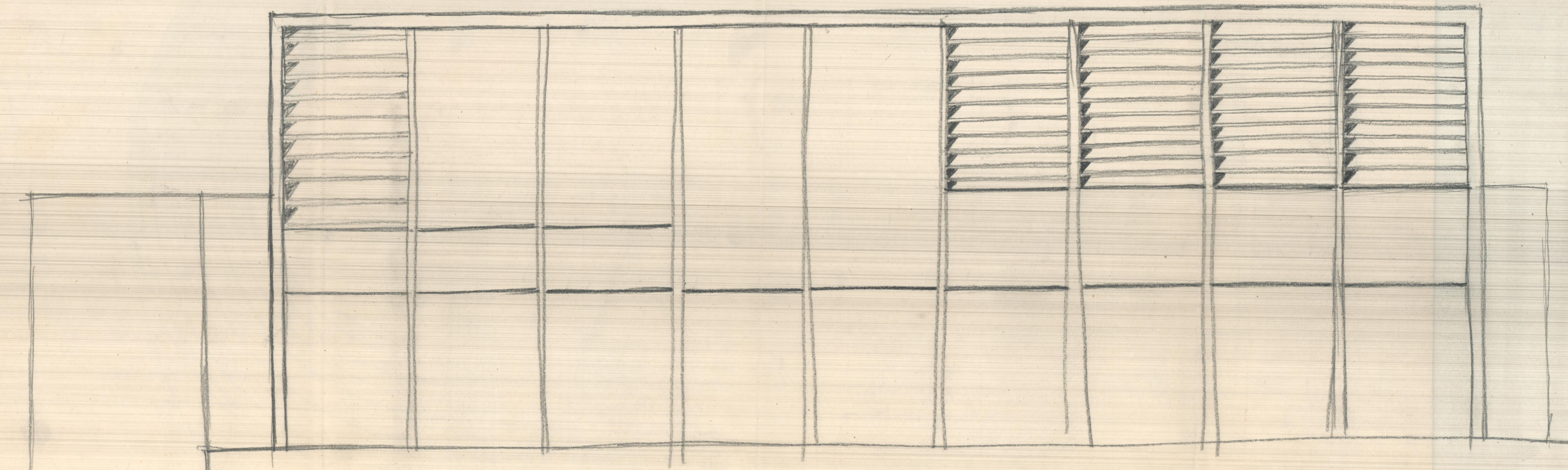






ALZADO (AL DESMONTE)
LATERAL

N.



ALZADO A PATIO.

