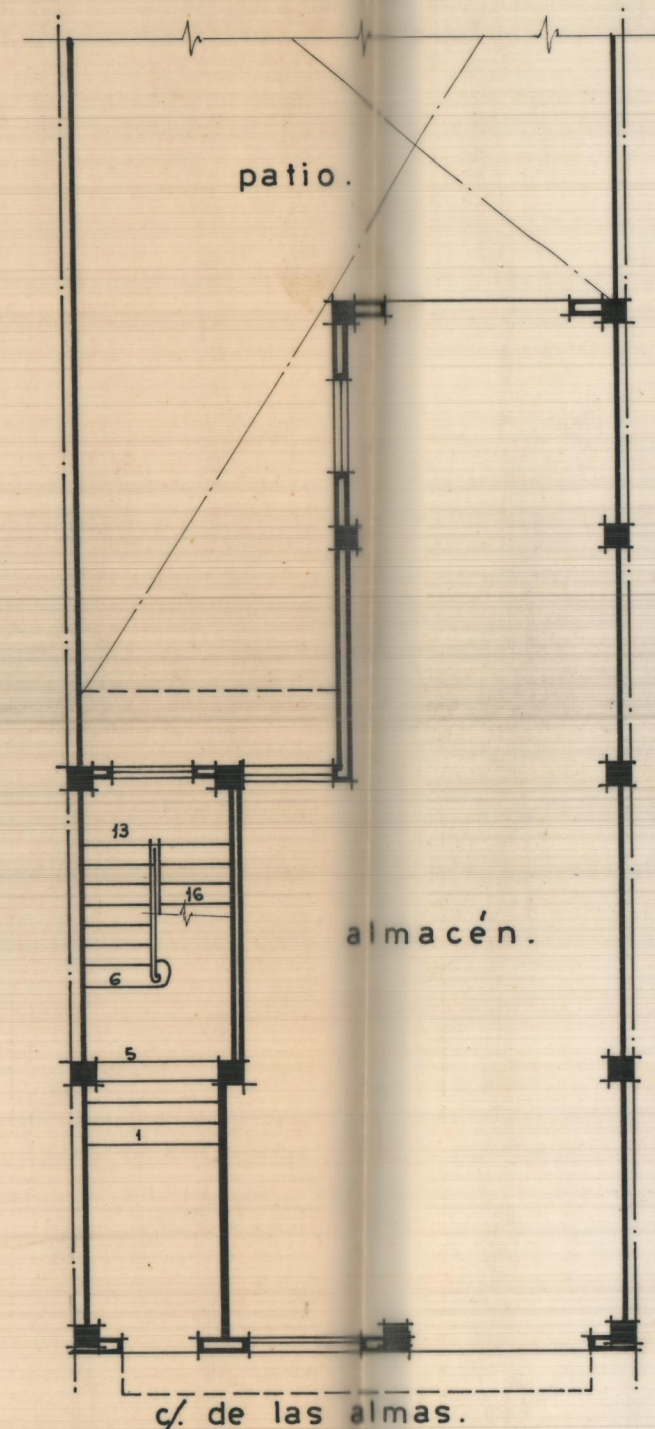
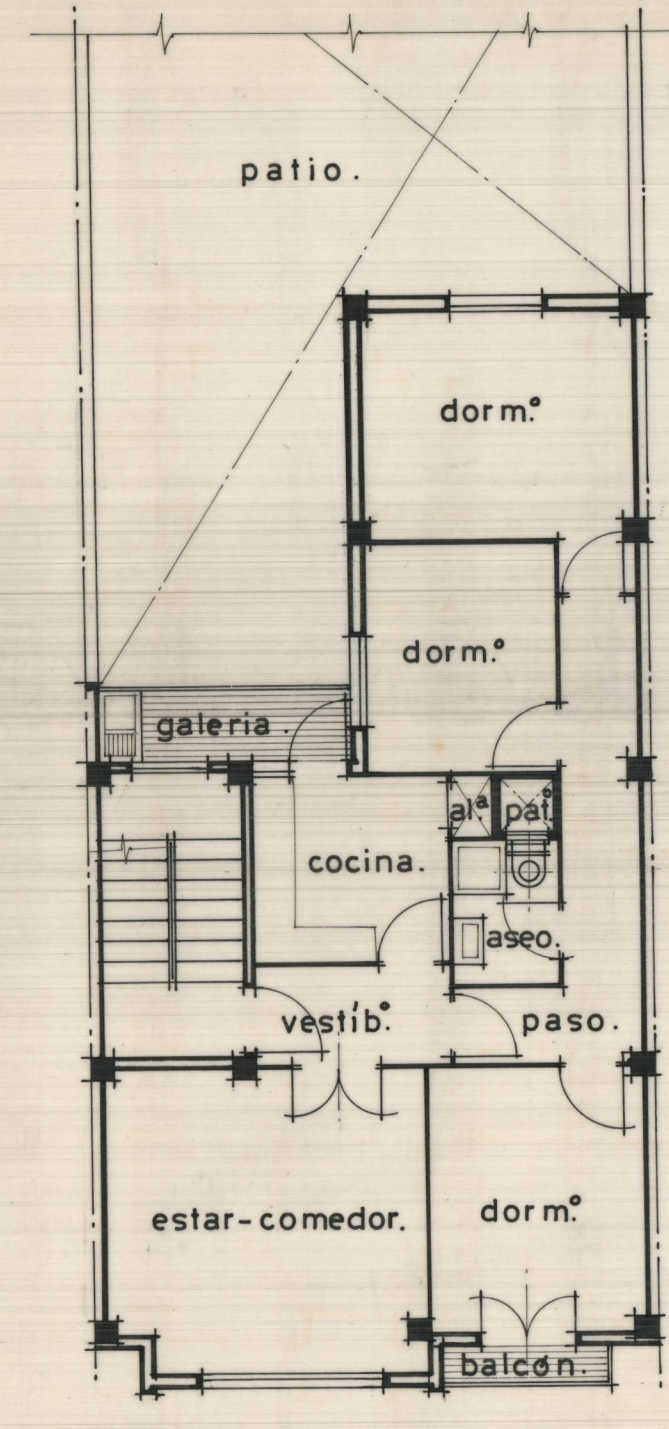


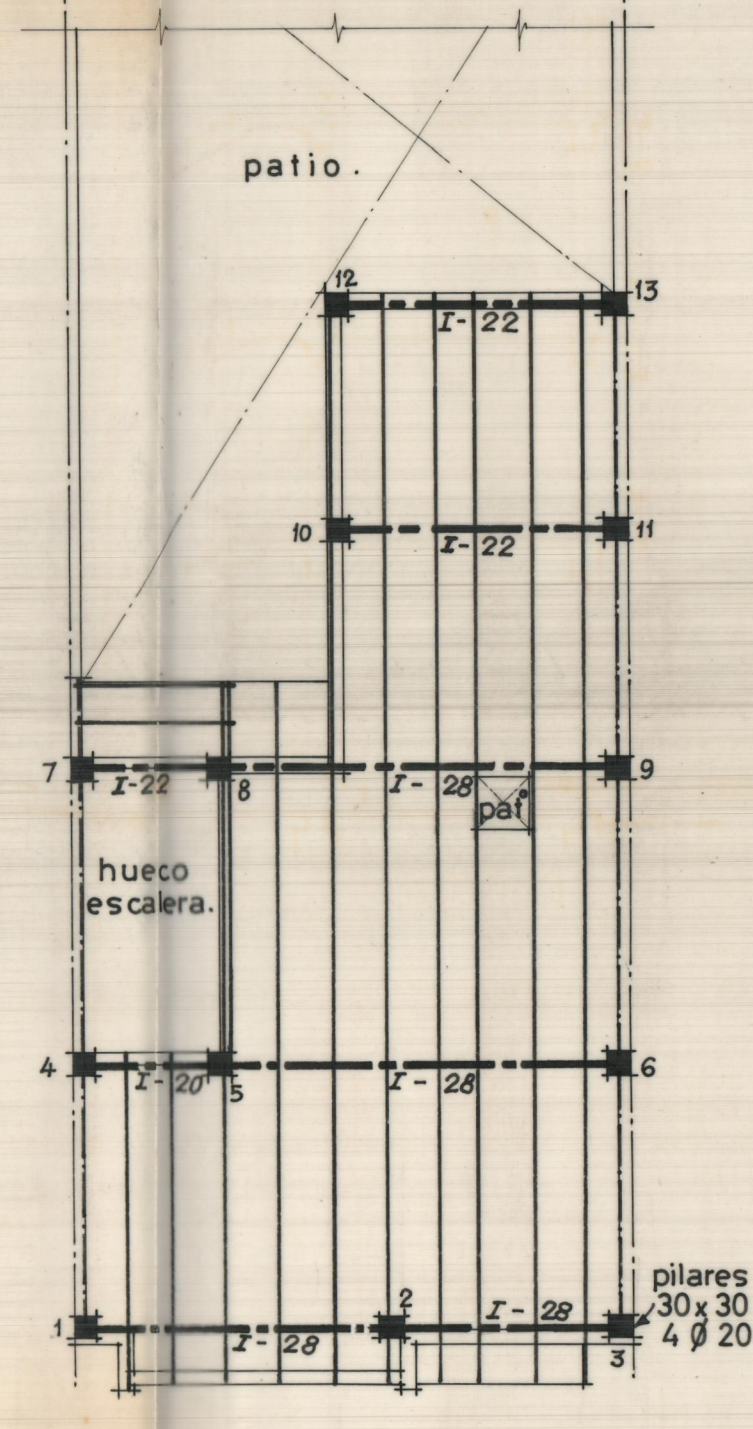
CIMENTOS Y DESAGÜES.



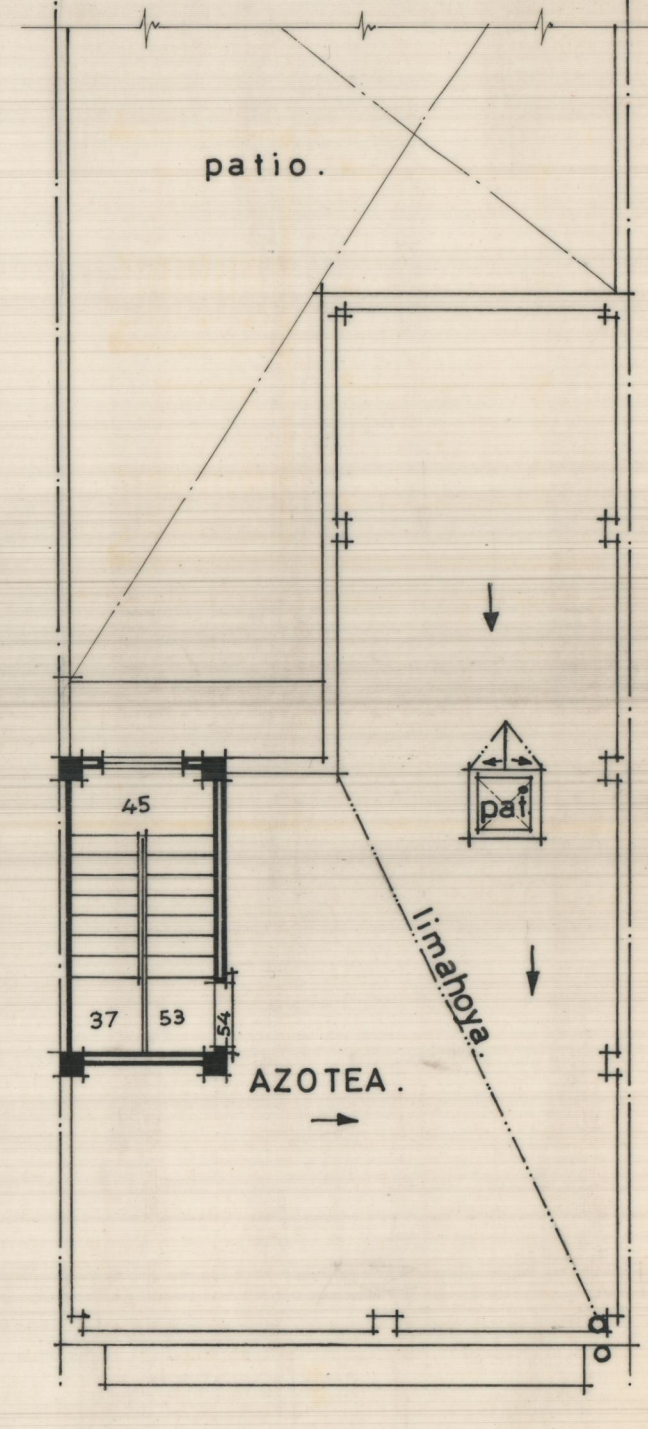
BAJA.



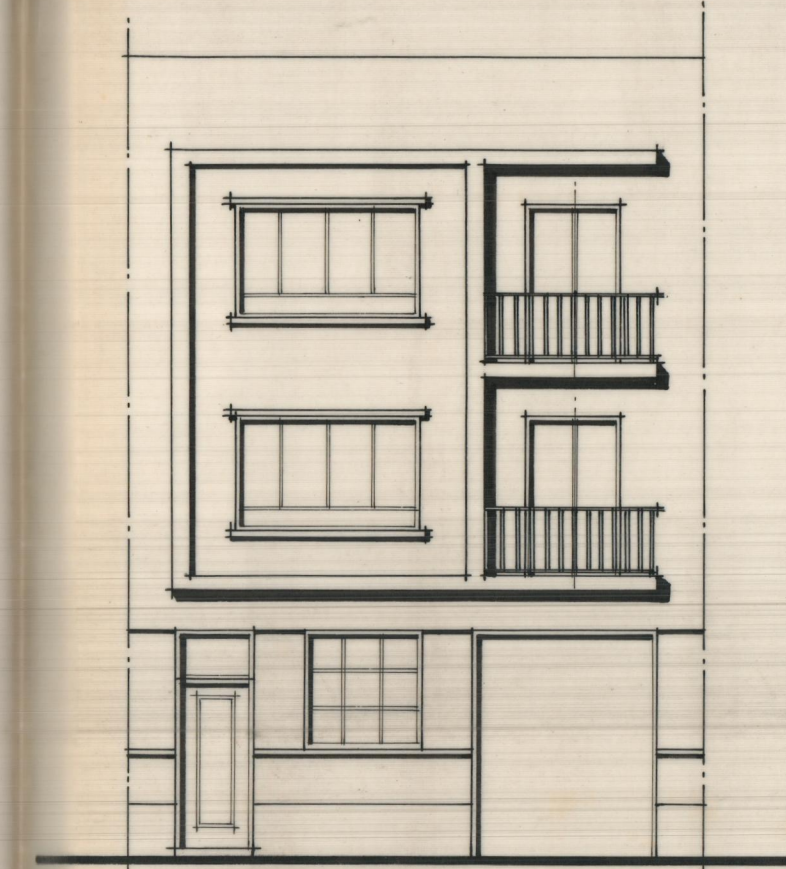
PISOS.



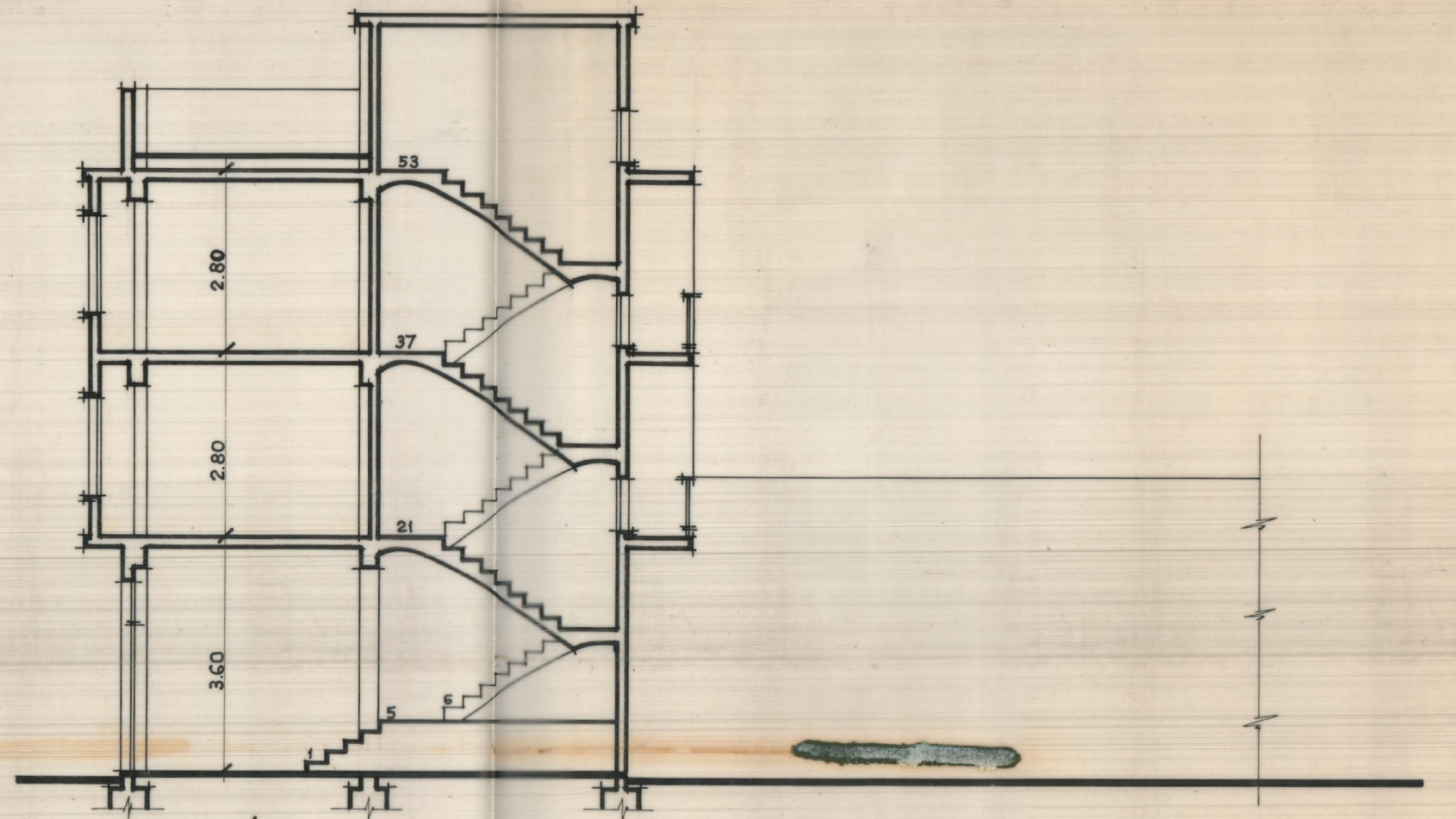
ESTRUCTURA.



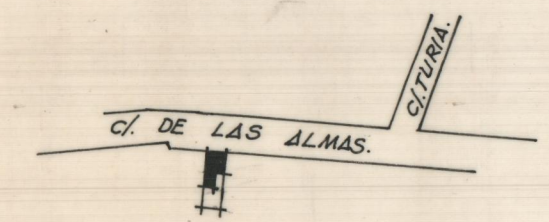
AZOTEA.



ALZADO.



SECCIÓN.



SITUACIÓN.
escala = 1:2.000.

ALMACEN EN BAJOS, Y DOS VIVIENDAS
EN SENDOS PISOS . - BENAGUACIL . -

Propietario: D. LUIS CALAFORRA MARTÍ.

ESCALA = 1:100.
Valencia - Febrero - 1969.
El Arquitecto: