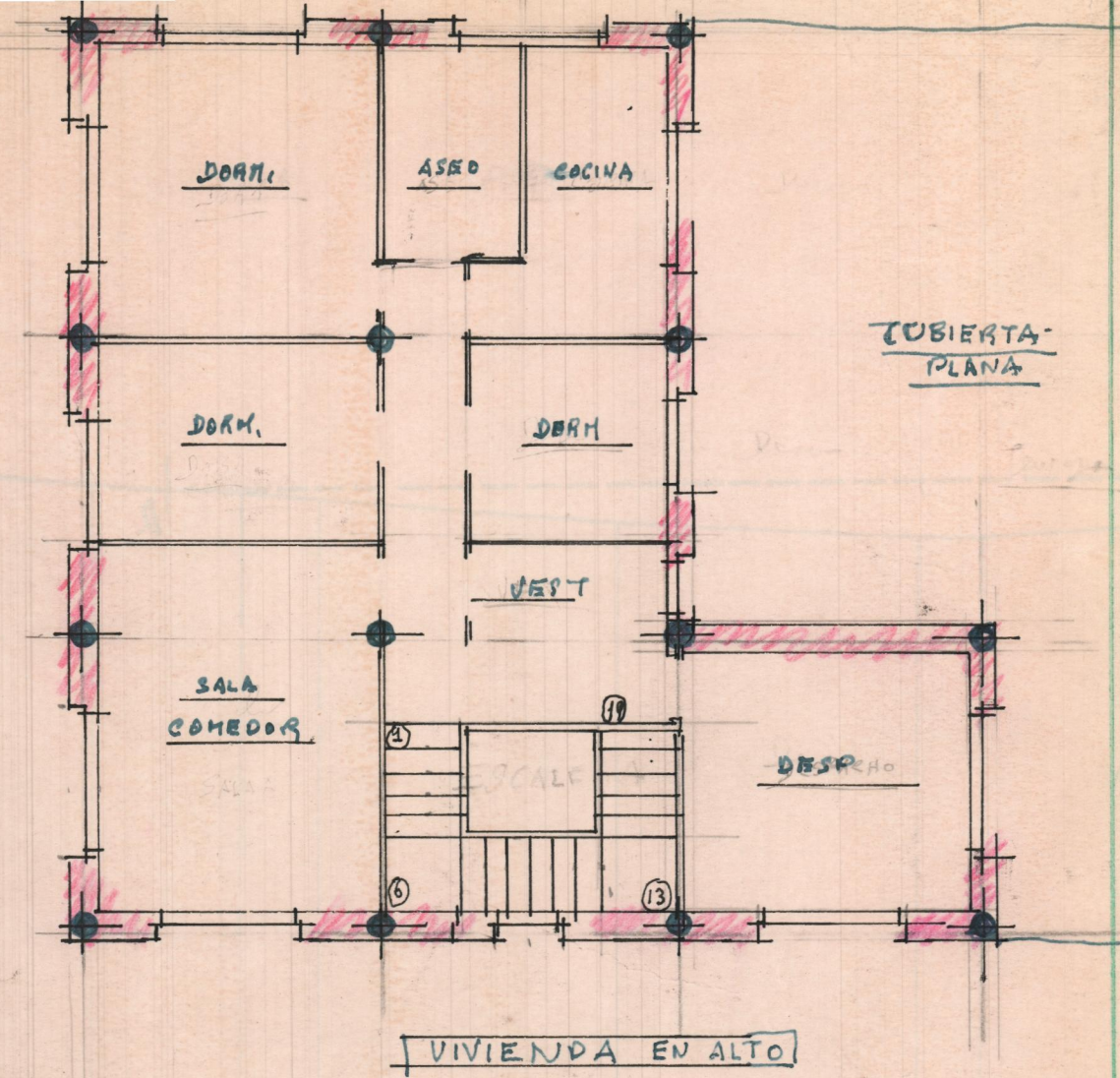
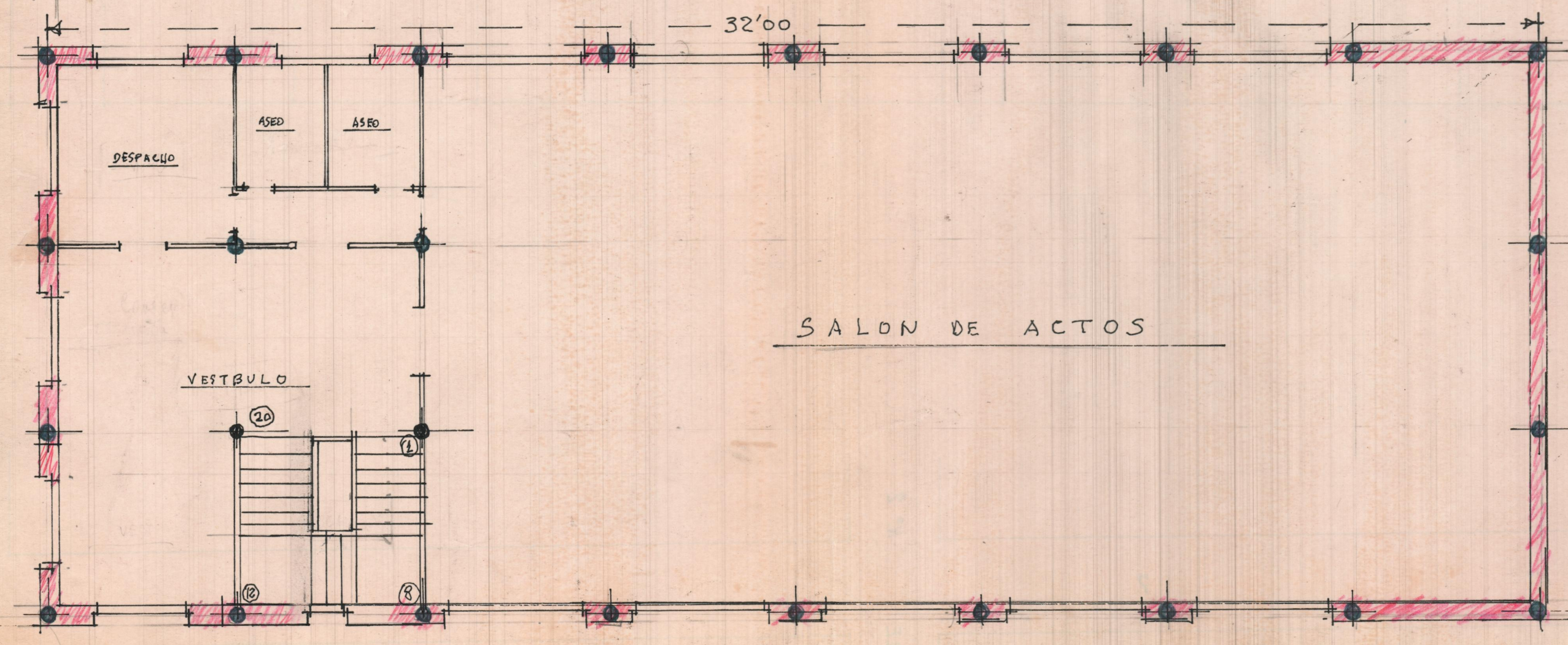


PLANTA BAJA



VIVIENDA EN ALTO



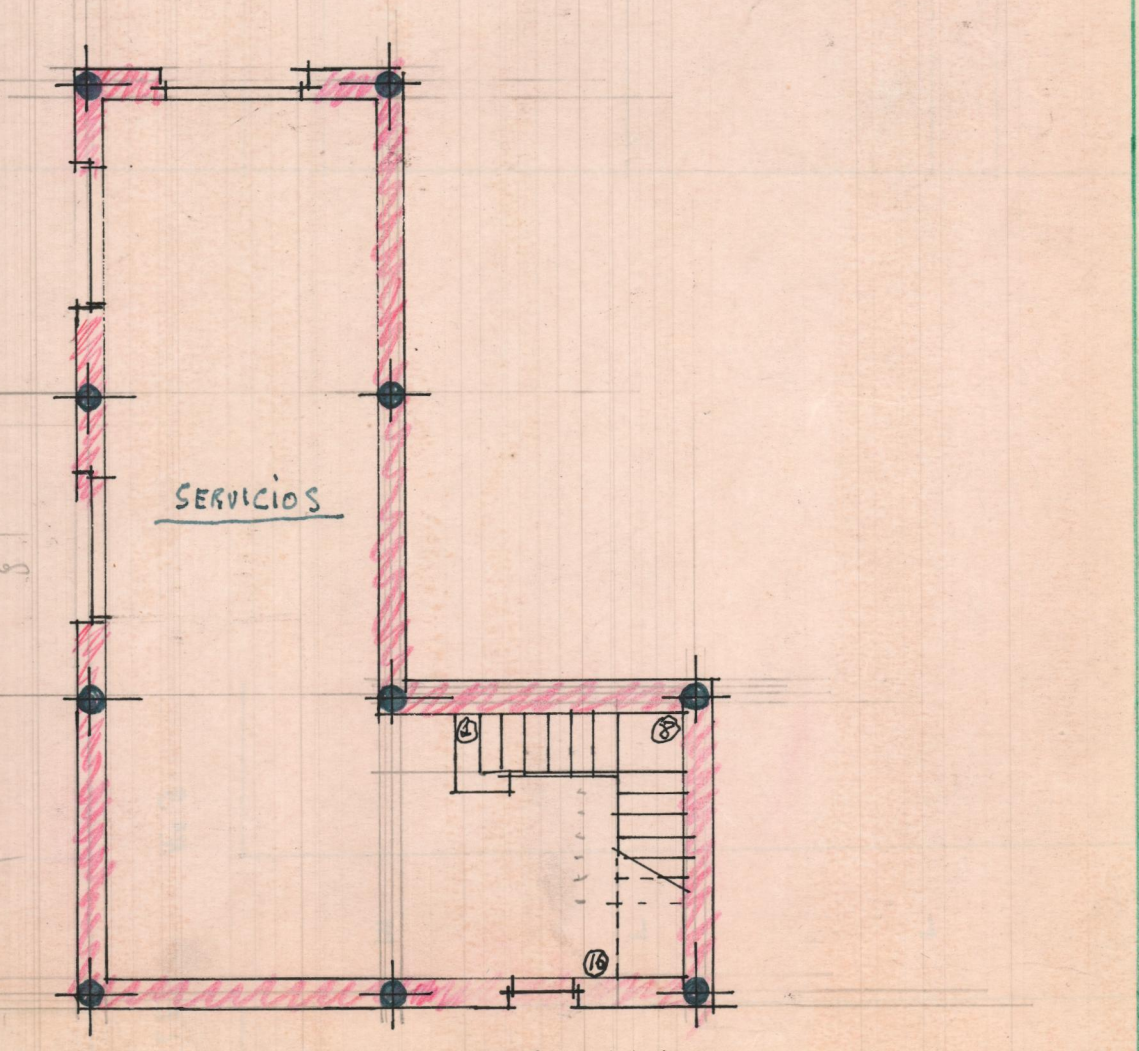
PLANTA ALTA

Planta baja a sótano  
3.00 / 16  
1.40 / 12  
19 alturas

Planta baja a piso 10  
4.50 / 13  
1.30 / 02  
28 alturas

Piso 10 a piso 20 (apartamento)  
4.00 / 80  
1.80 / 00  
25 alturas

Vivienda piso 20 a ático  
3.00 / 16  
1.40 / 12  
19 alturas



SEMI-SOTANO

un  
un  
un