

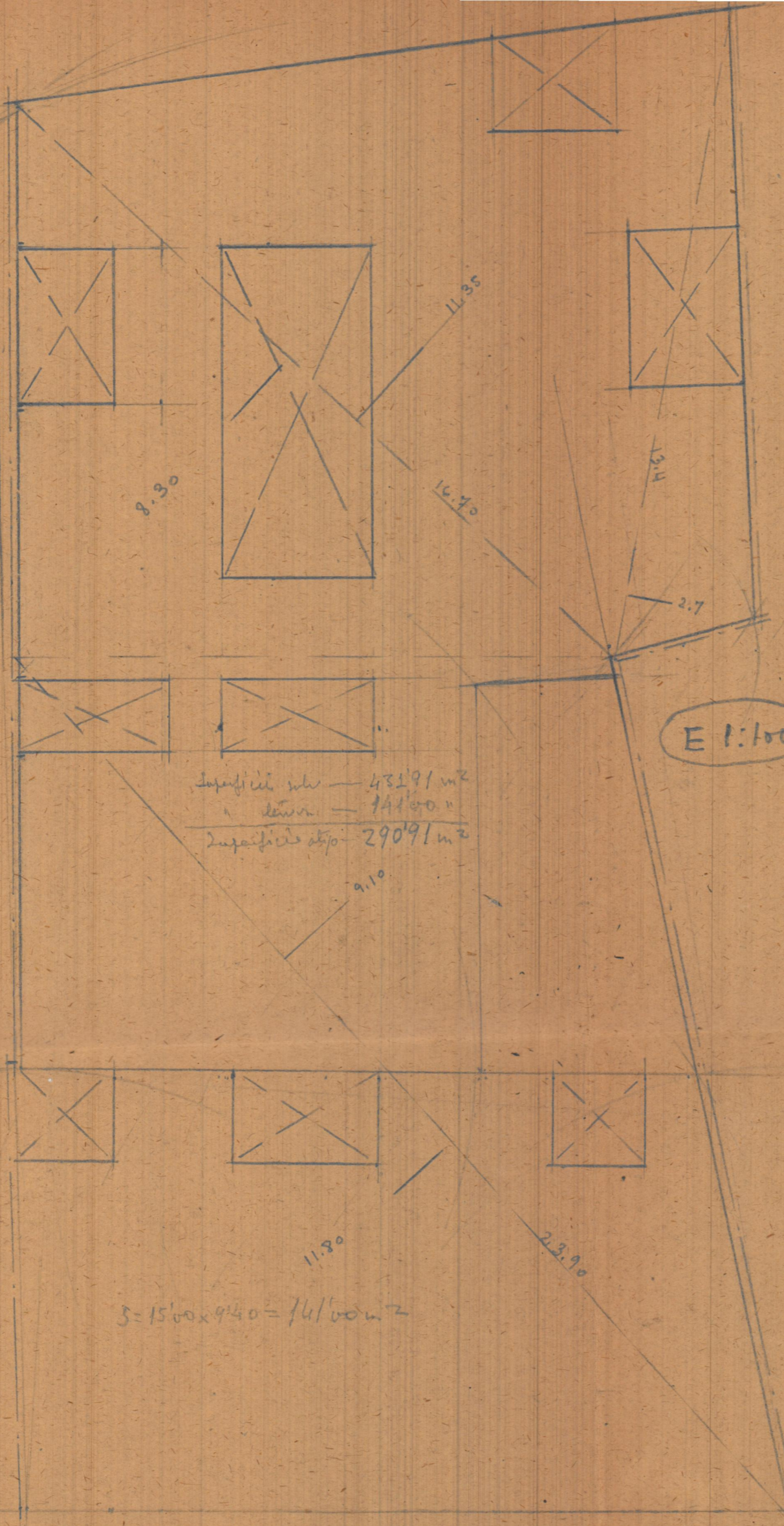
S. Hector Grauso
elc

$$\text{Luz. } \frac{23.90 (11.8 + 9.10)}{2} = 249.75$$

$$16.40 (11.35 + 8.3) = 164.07$$

$$13.4 \times 2.70 = 18.09$$

$$M^2 \quad 431.91$$



Superficie sol - 431.91 m²

Superficie planta - 141.00 "

Superficie alfo - 290.91 m²

E 1:100

Sup. solar 23.45 x 9 = 169.65 M²

Sup. pino 18.85 x 9 = 211.05 M²

S = 9.00 x 4.50 = 40.50 m²

Sup. pino - 169.65

Superficie planta - 81.00

Superficie alfo - 88.65

S = 15.00 x 9.40 = 141.00 m²

S = 9.00 x 4.50 = 40.50 m²

Calle Rileira 8

C. Martinez Cabells 3.