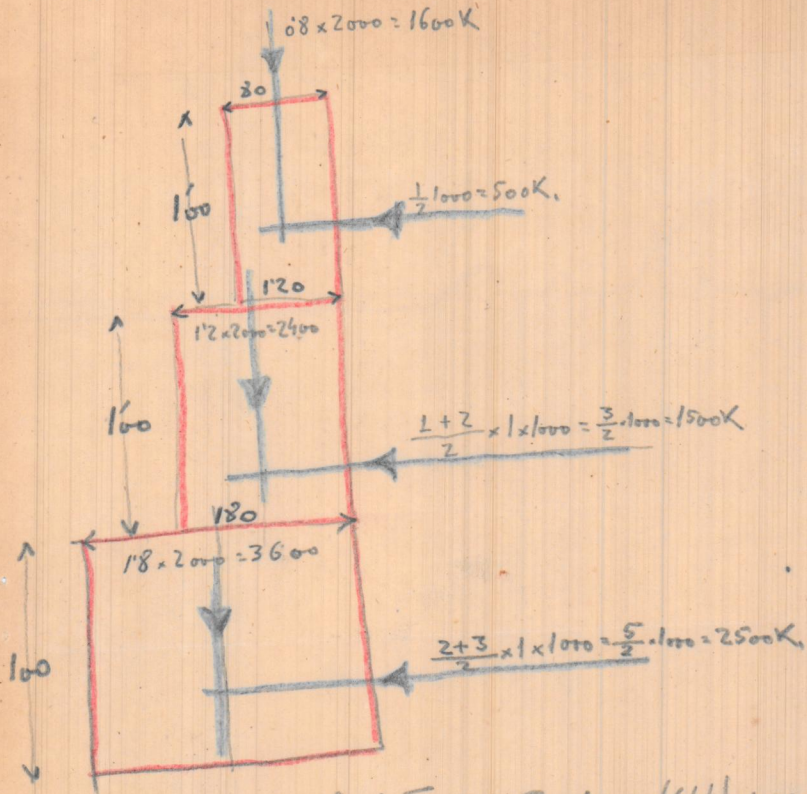


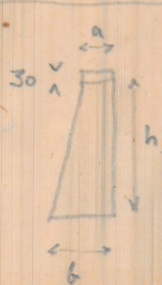
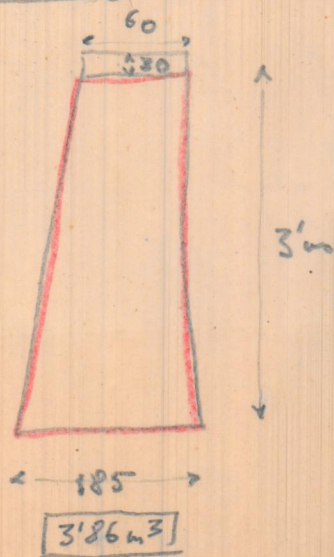
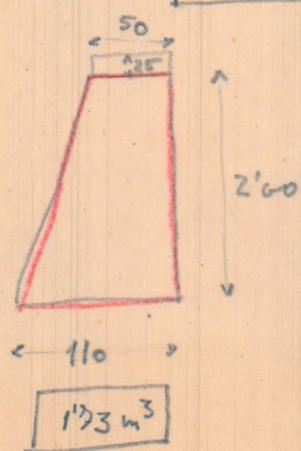
Gonzalo Almenar

23-Abril-1944

Deposito para 500 m³ { de 2m altura - 16x16 = 256 m² - 512 m³
 de 3m " - 13x13 = 169 m² - 507 m³



Datos del Zedaya (646) pag-147

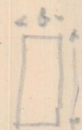


(Zedaya) a=60, c=30 (pag 146)

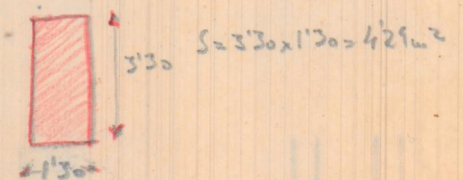
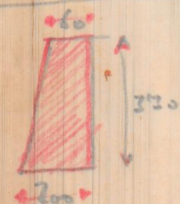
$$b = 0.858 \cdot h - a = 0.858 \cdot 3 - 0.60 = 2.574 - 0.60 = 1.974 \text{ m}$$

(Colombo) (pag 250)

$$b = 0.74 \cdot 3 - 0.60 = 2.462 - 0.60 = 1.86 \text{ m}$$



$$b = 0.858 \cdot h - b \text{ u } b = \frac{0.858 \cdot 3}{2} = 0.429 \cdot 3 = 1.287 \text{ m}$$



15
15
35
18
225
450

Dep 2.

Muros	$4 \times 17 \times 1.73 = 117.640 \text{ m}^3$	a 85.-	10.000
Limite y exterior	$4 \times 17 \times 1.00 = 68.000 \text{ m}^3$	a 116.-	6.800
Fondo	$16 \times 16 \times 0.30 = 76.800 \text{ m}^3$	a 70.-	5376
Exterior	$16 \times 16 = 256.00 \text{ m}^2$	a 7.-	1792
Interior	$4 \times 2 \times 16 = 128.00 \text{ m}^2$	a 7.-	896
			<u>24864 RS</u>

Dep 3.

Muros	$4 \times 14 \times 3.86 = 216.160 \text{ m}^3$	a 85.-	18373.60
Limite y exterior	$4 \times 14 \times 2.00 = 112.000 \text{ m}^3$	a 116.-	12992.-
Fondo	$13 \times 13 \times 0.30 = 50.700 \text{ m}^3$	a 70.-	3549.-
Exterior	$13 \times 13 = 169.00 \text{ m}^2$	a 7.-	1183.-
Interior	$4 \times 3 \times 13 = 156.00 \text{ m}^2$	a 7.-	1092
			<u>37189.60 RS</u>

