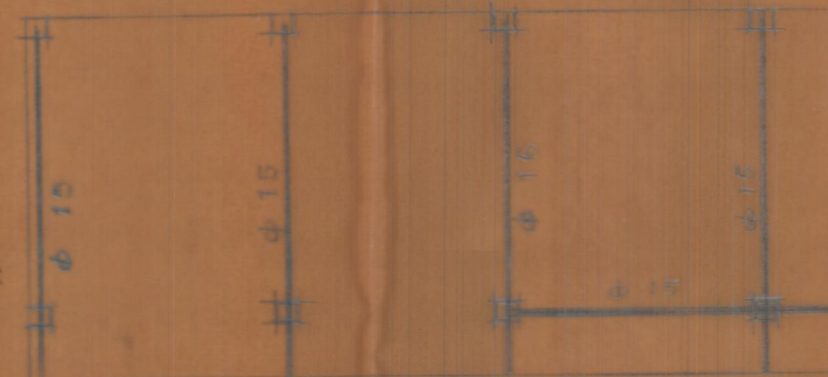
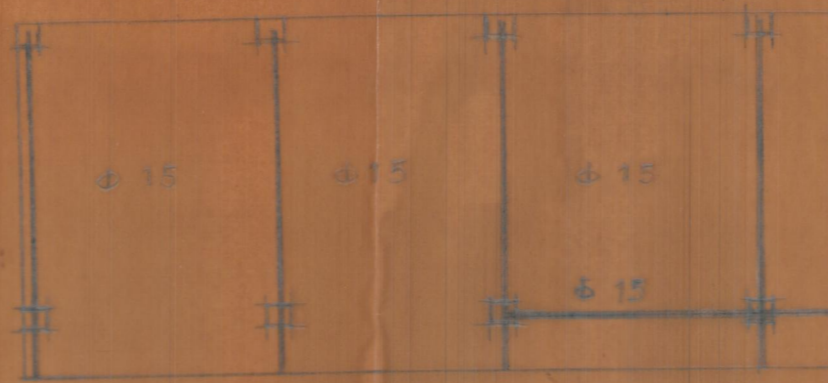


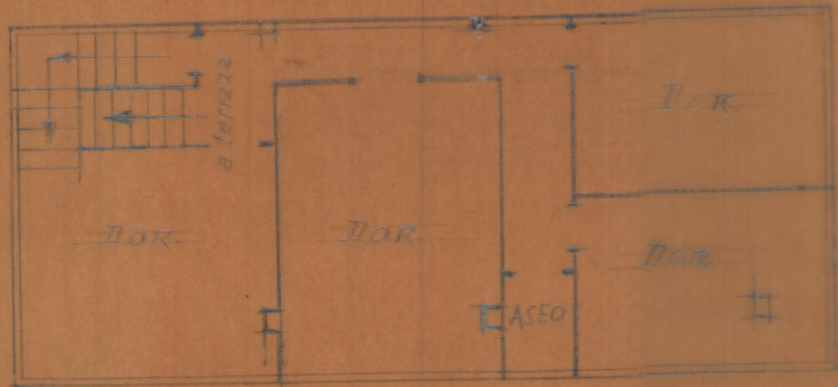
PROYECTO DE REFORMA DE PLANTA
 BAJA Y ELEVACION DE UN PISO EN
 EDIFICIO C. INDUSTRIA 27
GRAO-VALENCIA



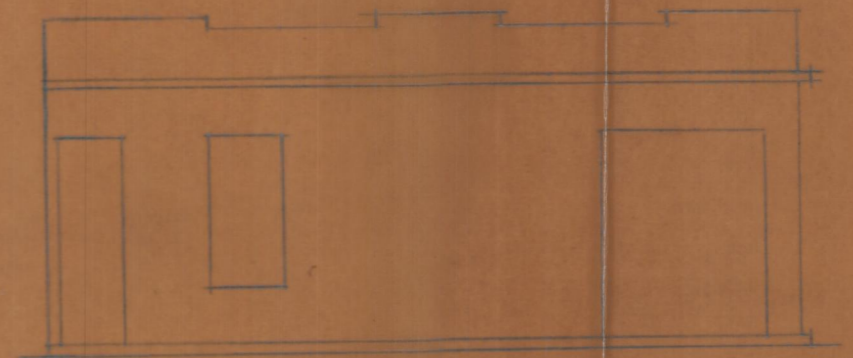
PLANTA TERRAZA



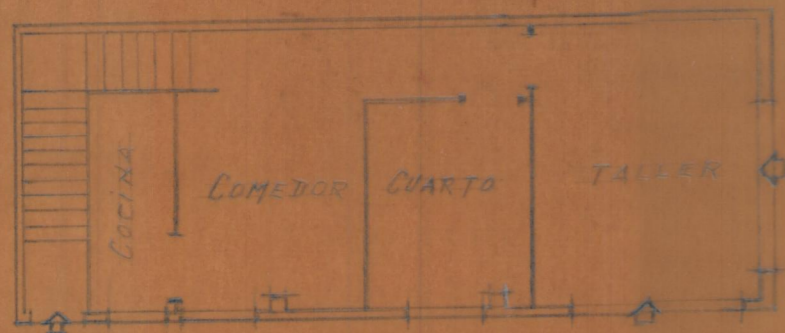
ENTRANADAS PISO Y TERRAZA



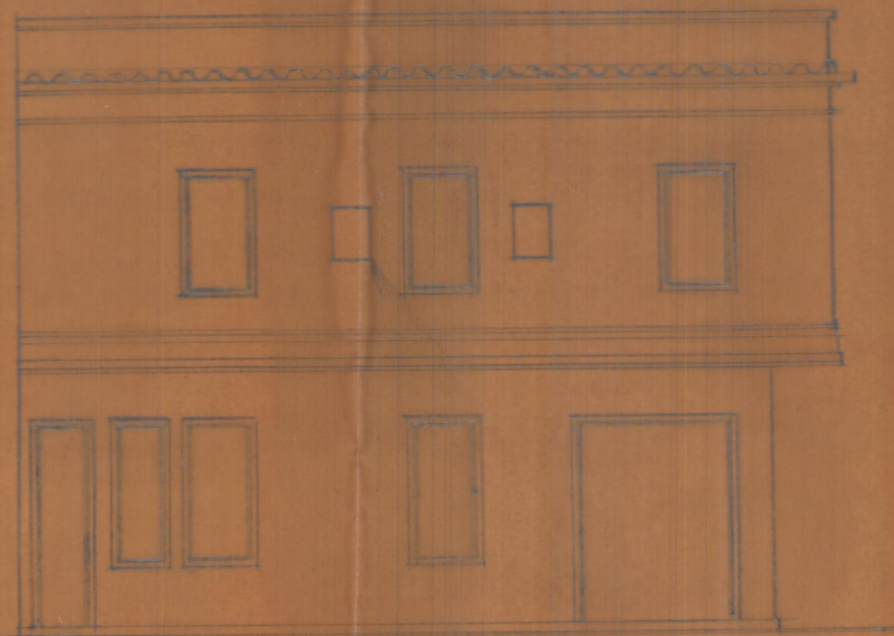
PISO ALTO



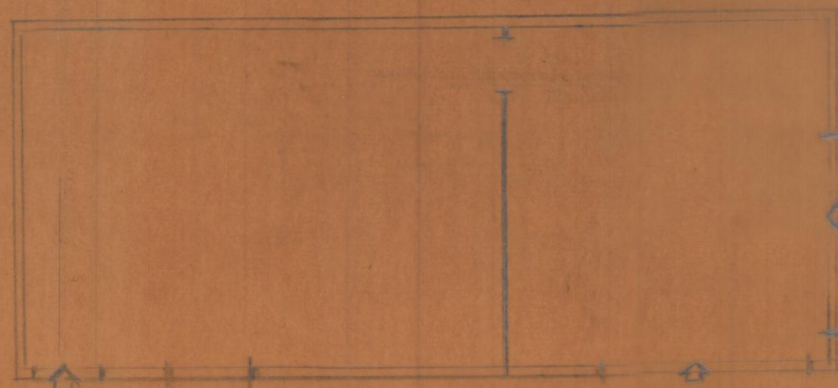
FACHADA ACTUAL



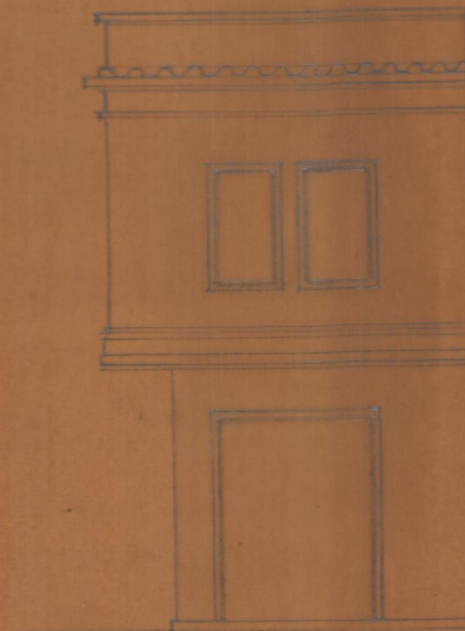
PLANTA BAJA REFORMADA



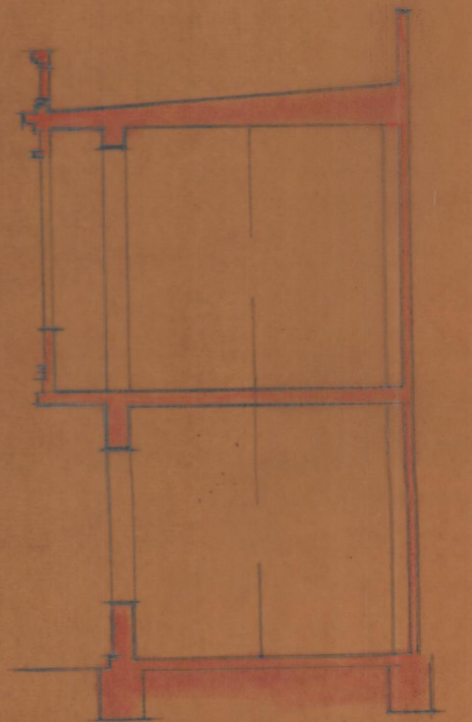
FACHADA C. INDUSTRIA 27



PLANTA BAJA ACTUAL



FACHADA C.
 PADRE LUIS NAVARRO
 317



SECCION

Escala 1:100
 Valencia Agosto 1944
 El Arquitecto