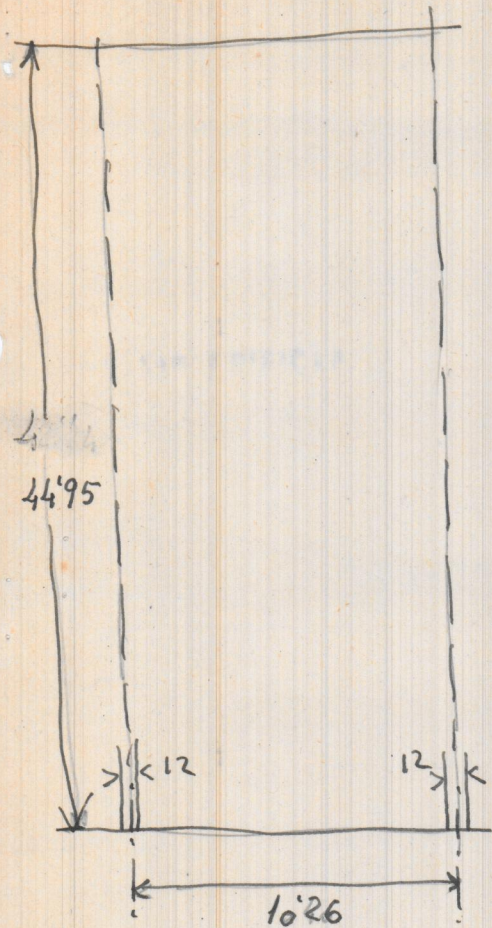
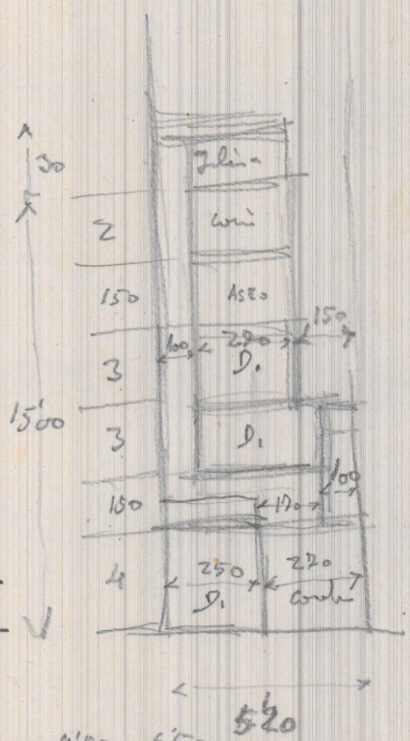


Chilleda  
 28-abril-1963

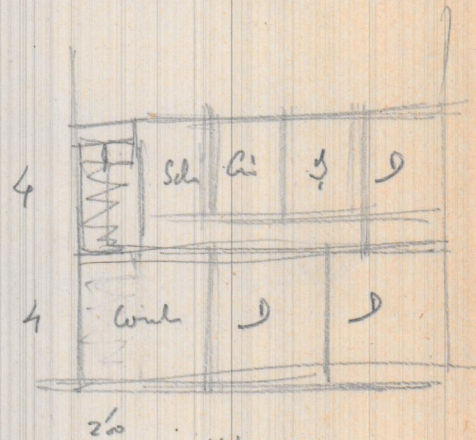
Uma planta alta com dois vidros  
 Do plant- alto de uma vivanda com uma



$$\begin{array}{r} 44'3'43 \\ \underline{1'0'40} \\ 42'9'22 \end{array}$$



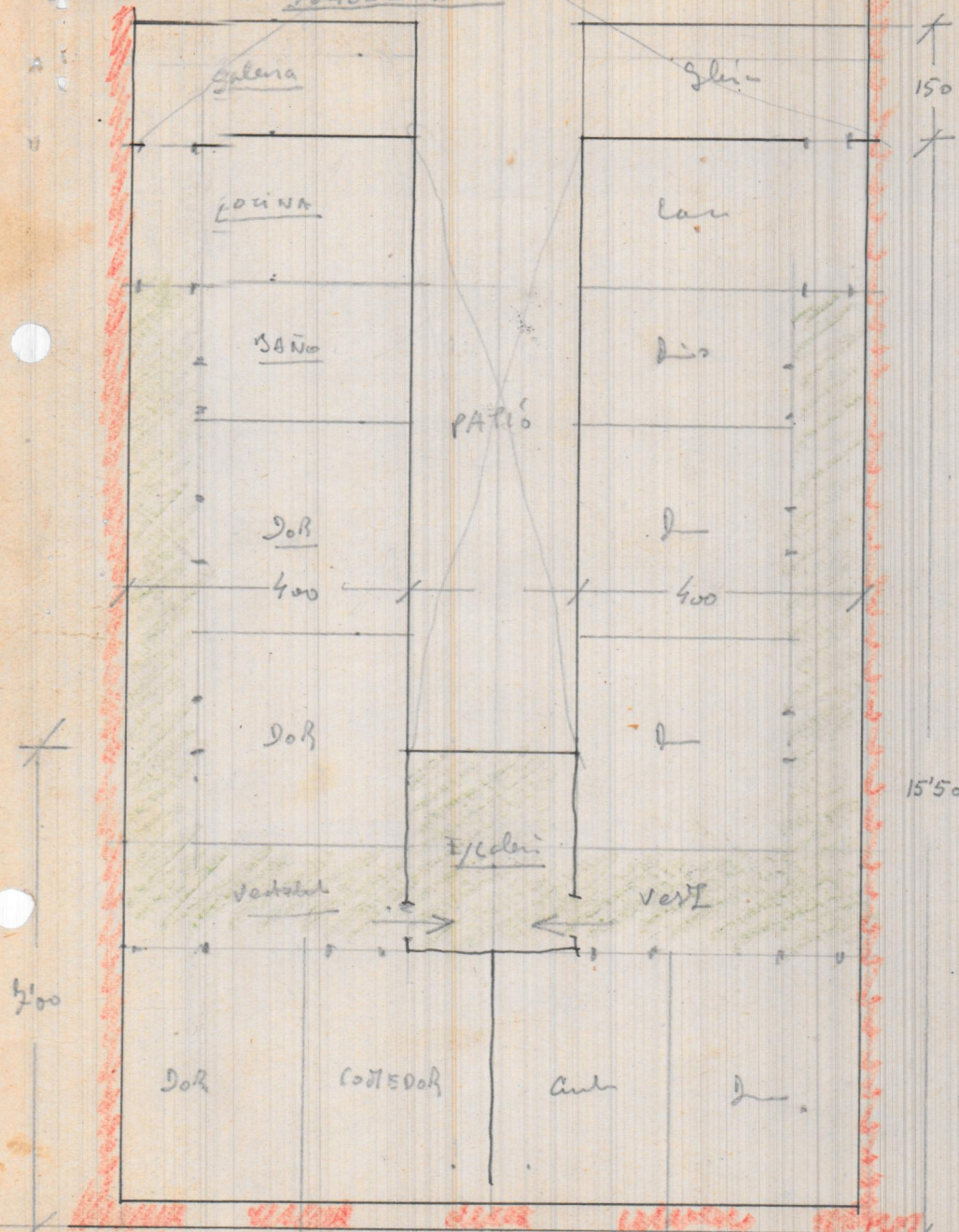
230  
 280



$$\begin{array}{r} 230 \\ \underline{16'40} \\ 8320 \end{array}$$

$$\begin{array}{r} 4'50 \quad 6'50 \\ 5'20 \quad 3'20 \\ \hline 19'0 \quad 45'5 \\ 42'5 \quad 19'5 \\ \hline 49'40 \quad 24'05 \\ 49'40 \\ \hline 23'45 \end{array}$$

Veranda  $40 \times 8'50 = 3400$   
 Sclera  $150 \times 6'0 = 900$   
364002 - Total



Dejo

$10'40 \times 2'50 = 28'00$  - Total  
 $320 \times 180 = 5'55$  - Sclera  
72'45 - Total

