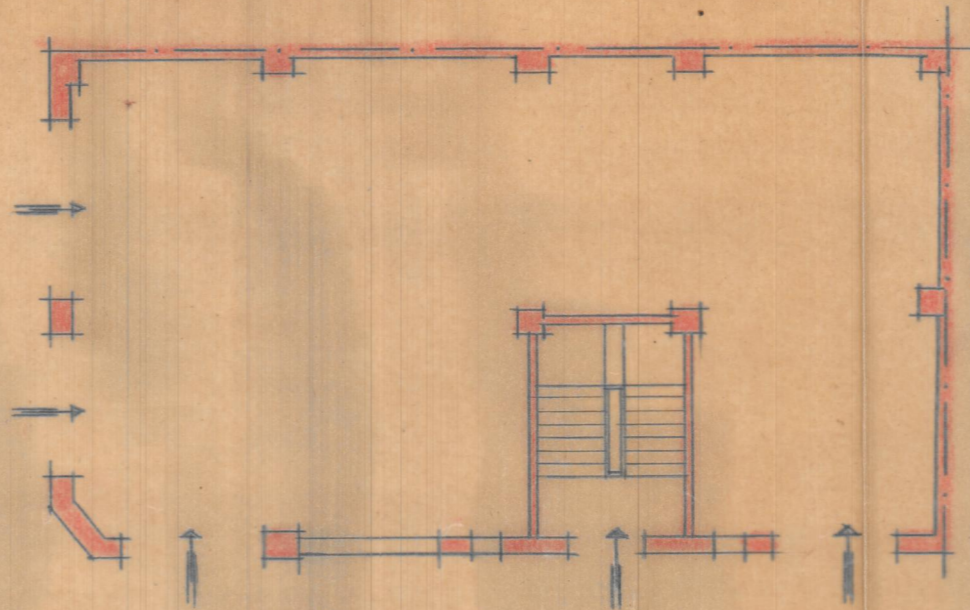


Planta alta



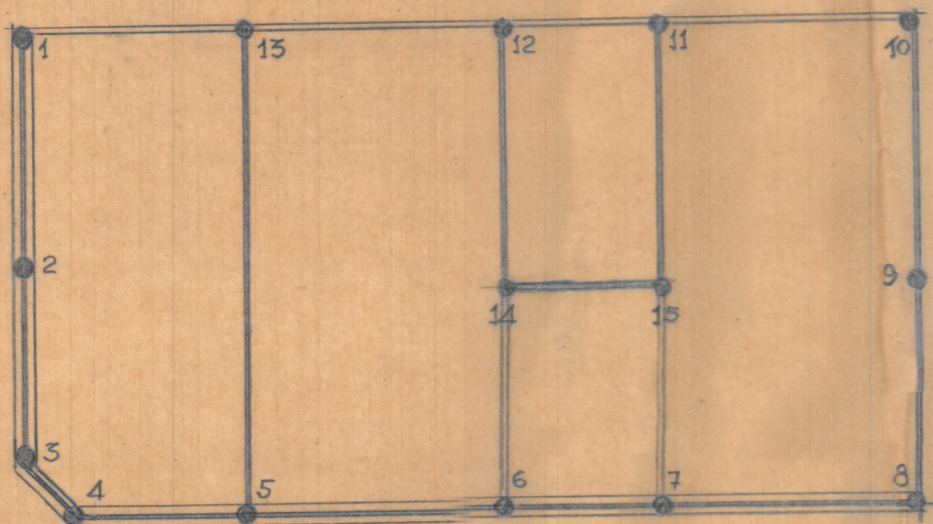
Planta baja

PROYECTO de edificio en la  
calle de la Reina del Cabañal

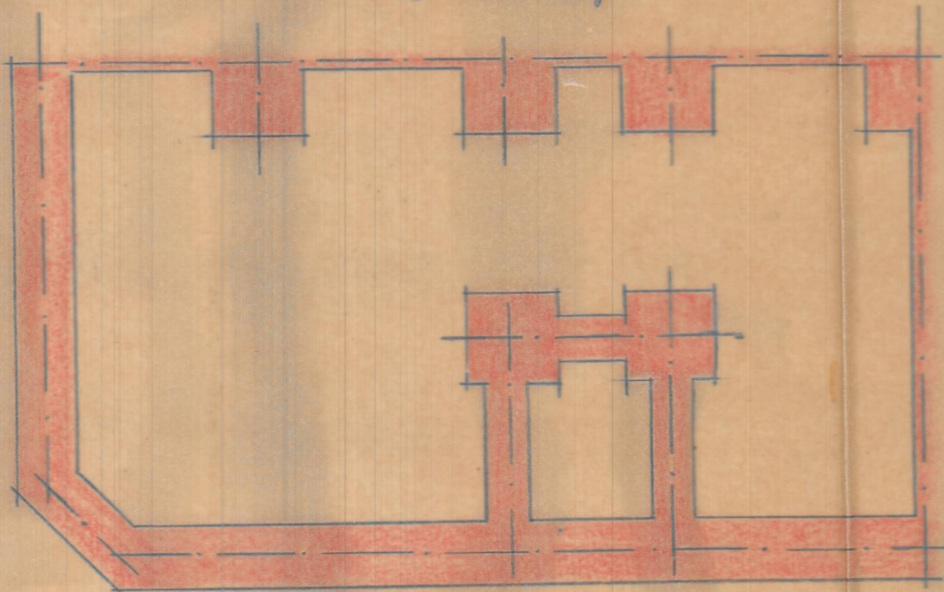
VALENCIA

ESCALA=1:100

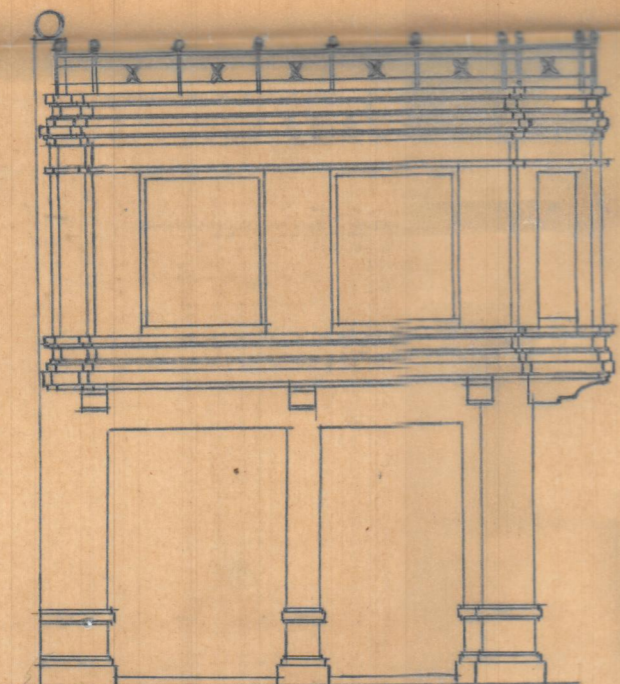
Valencia Julio 1947  
EL ARQUITECTO



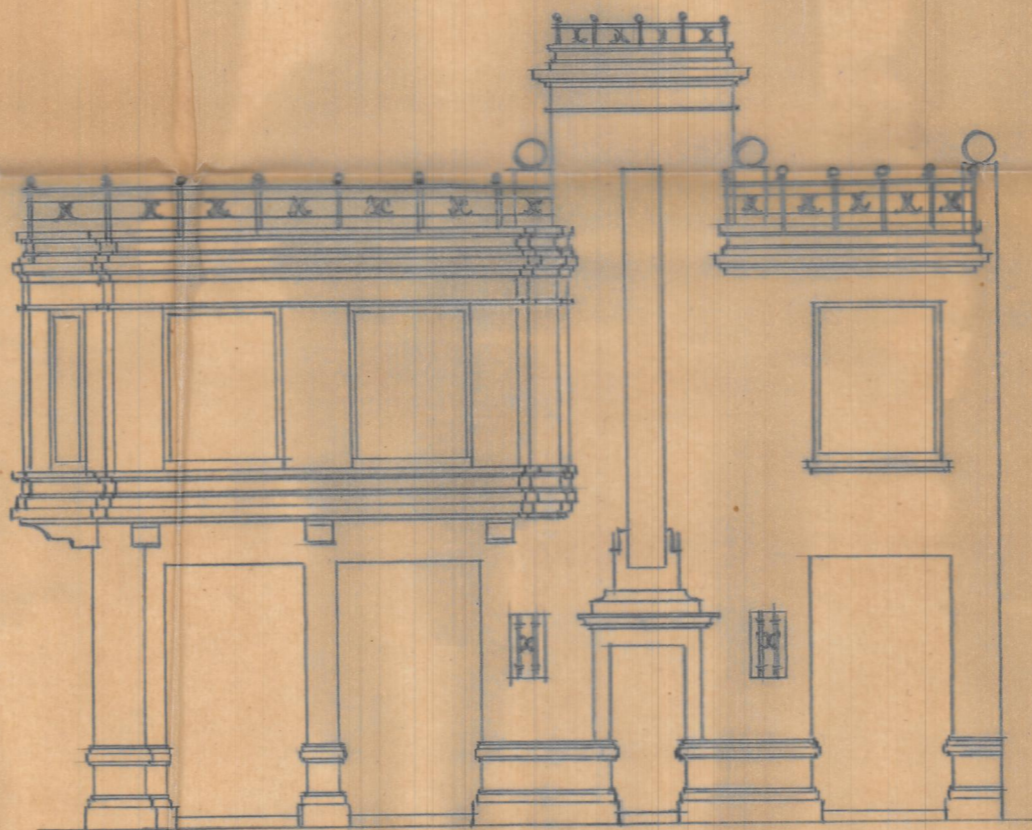
Entramado fijo y cubierta



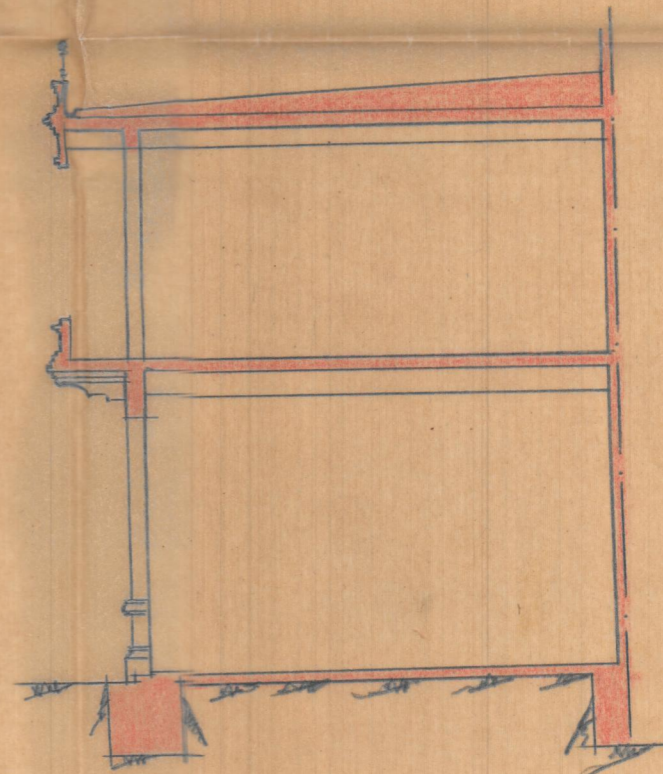
Cimientos



Fachada Calle de la Reina



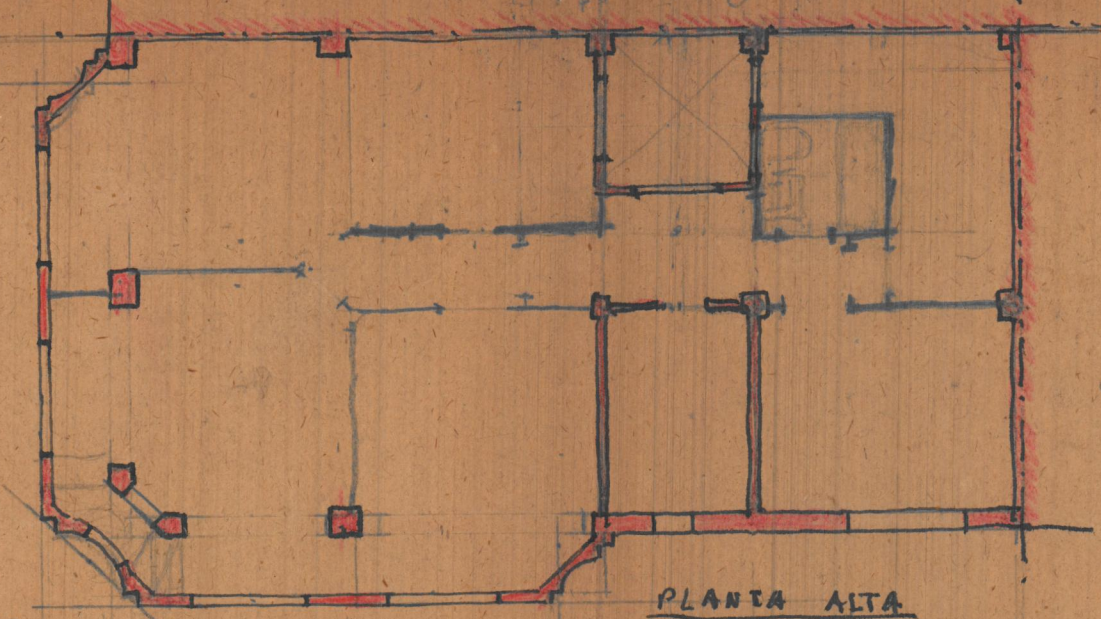
Fachada Plazuela de Campos



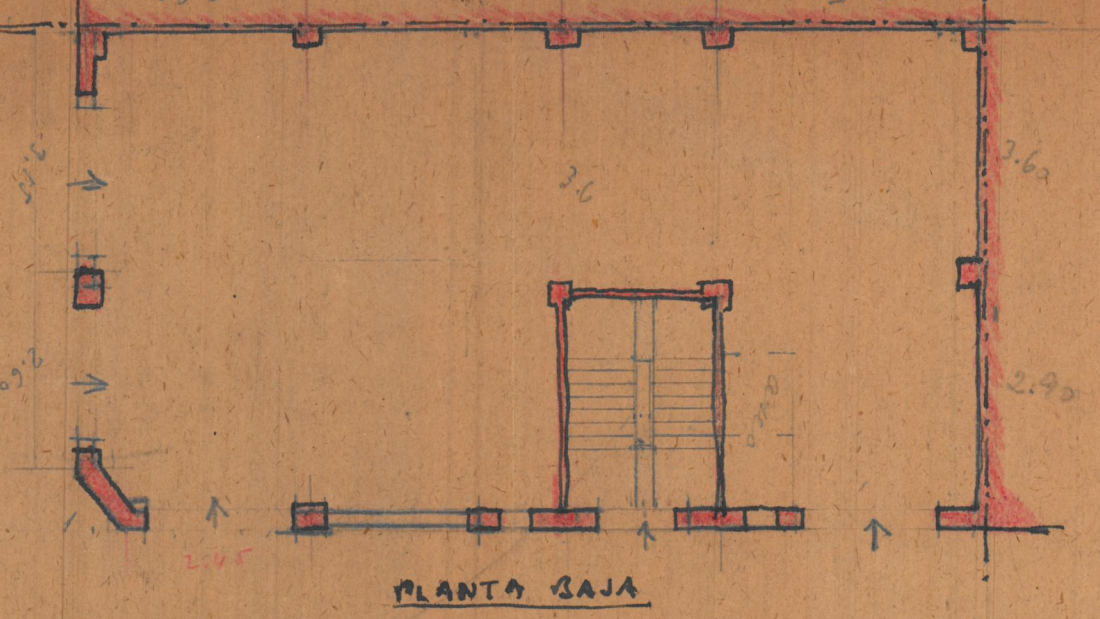
Sección



10411

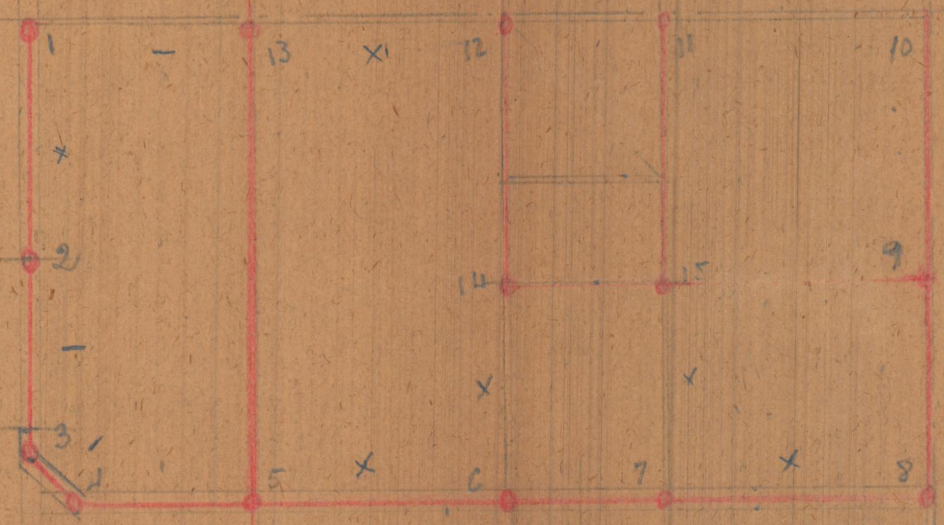


PLANTA ALTA

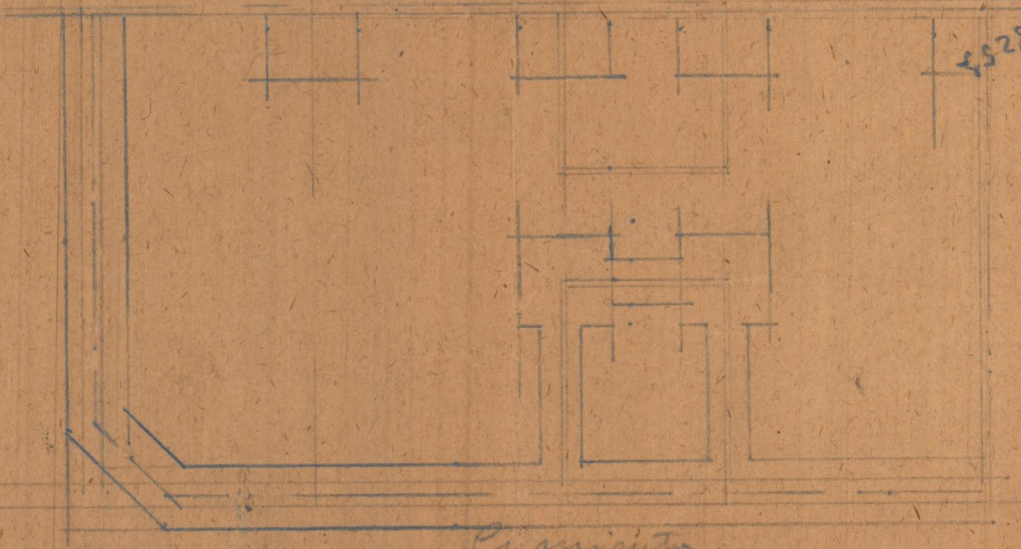


PLANTA BAJA

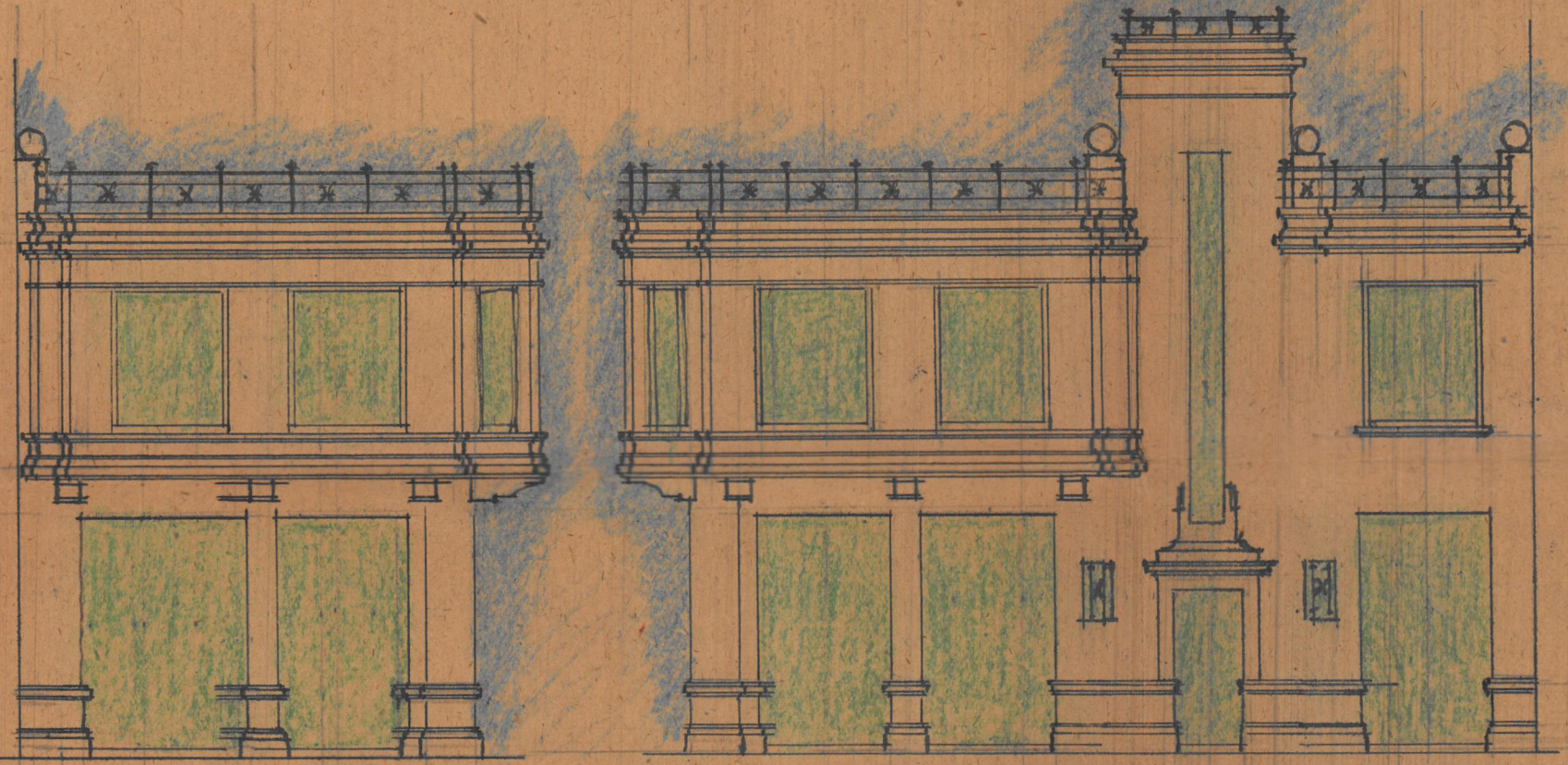
Proyecto de edificio  
en calle de la Reina  
del Caballero de Valencia



Inchamado riss y calicata

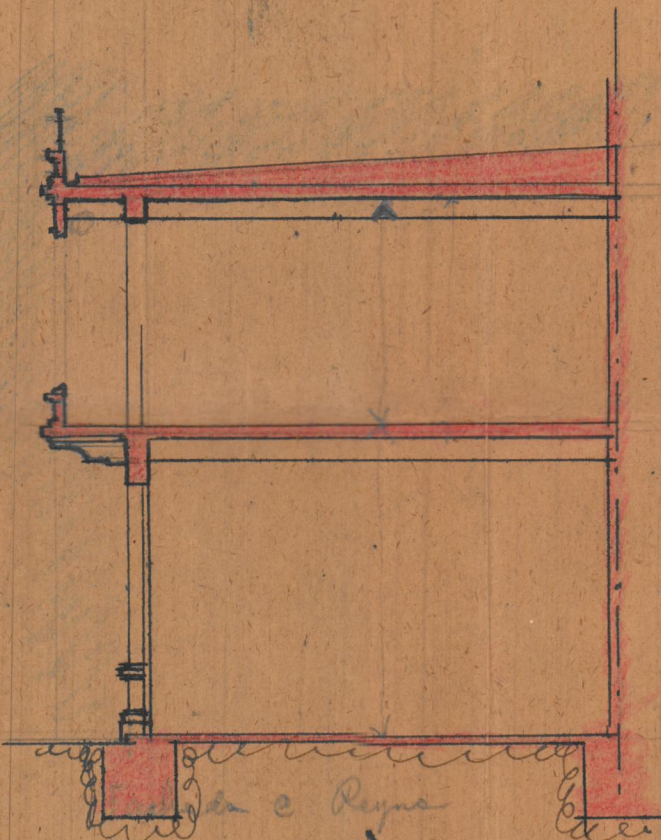


El rincón



FACHADA A LA CALLE

FACHADA A LA ...



SECCION