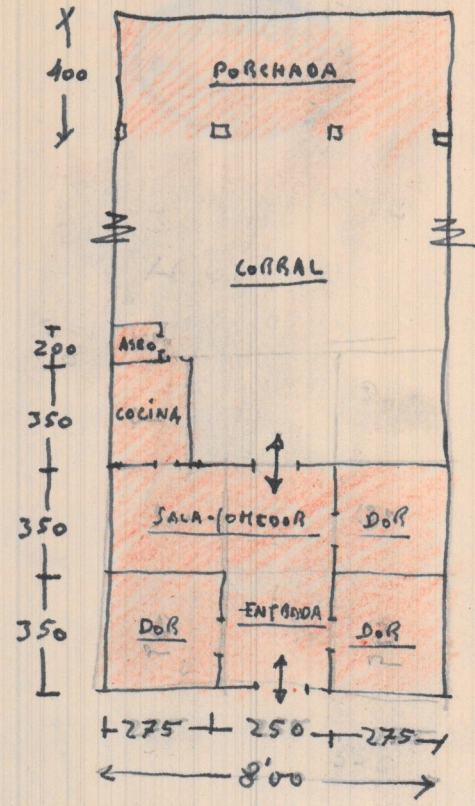
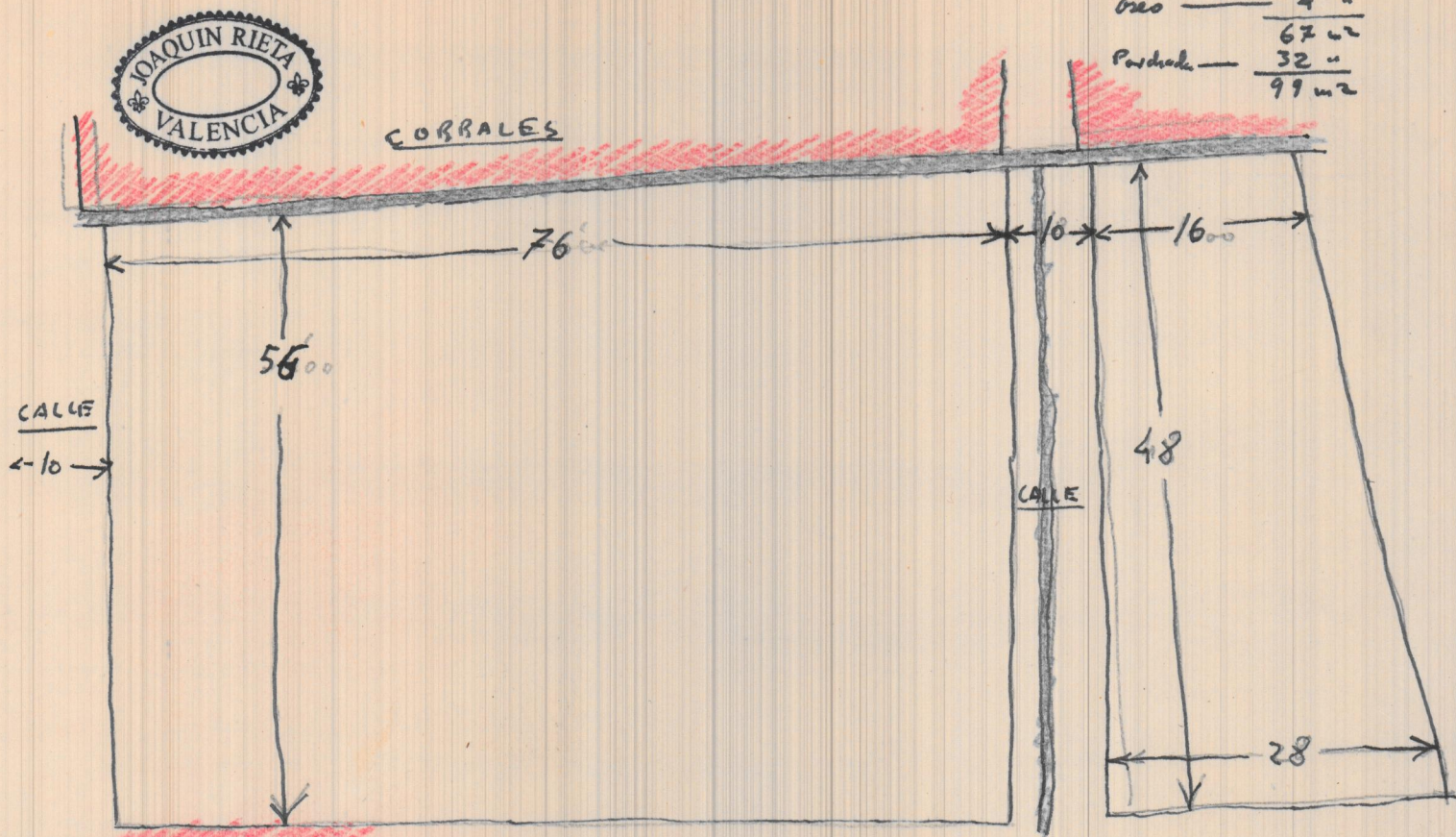
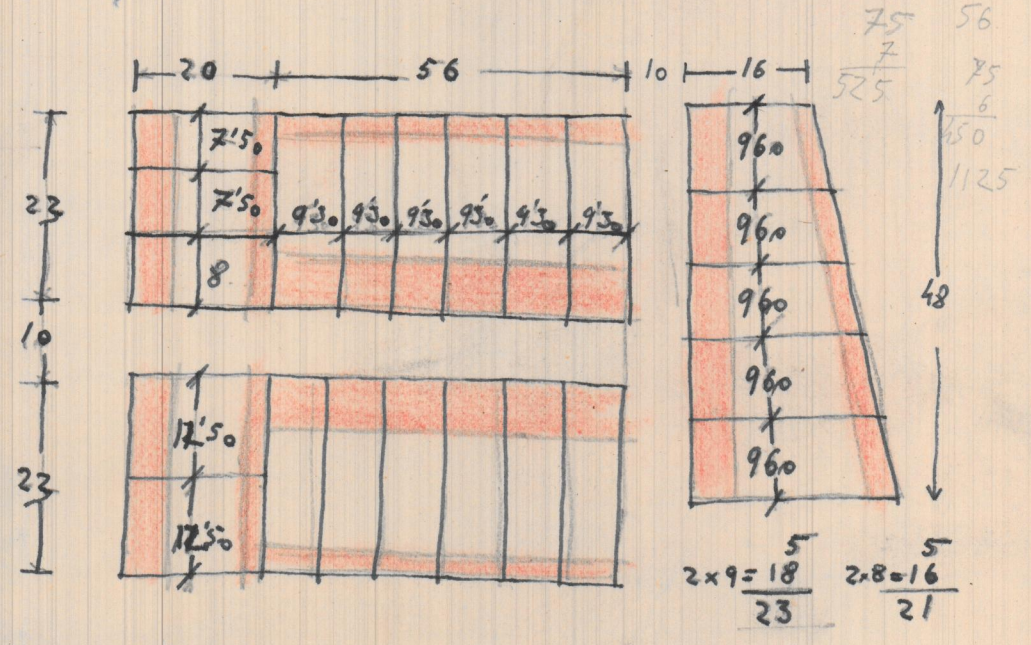
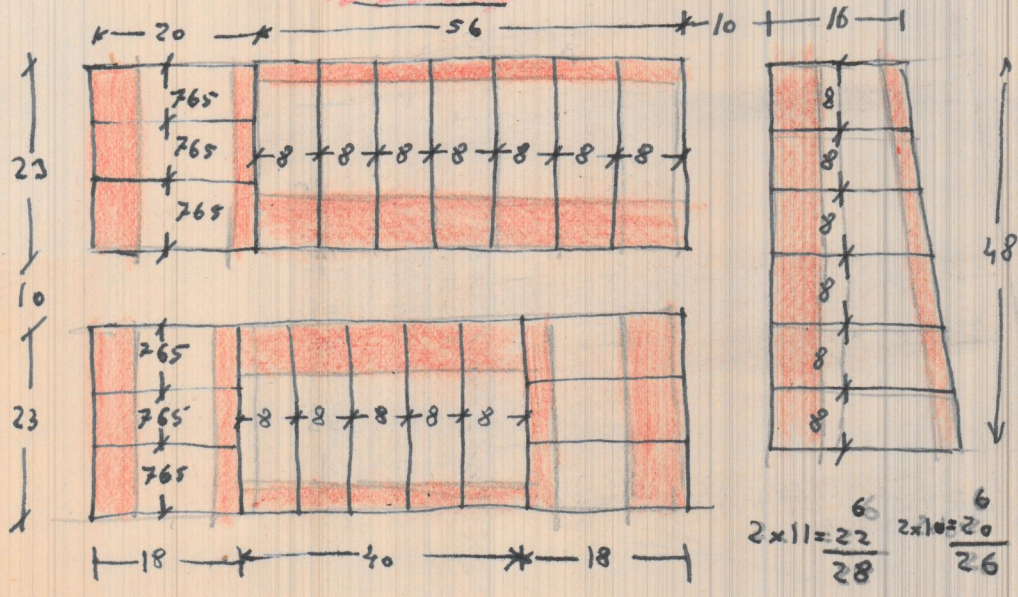


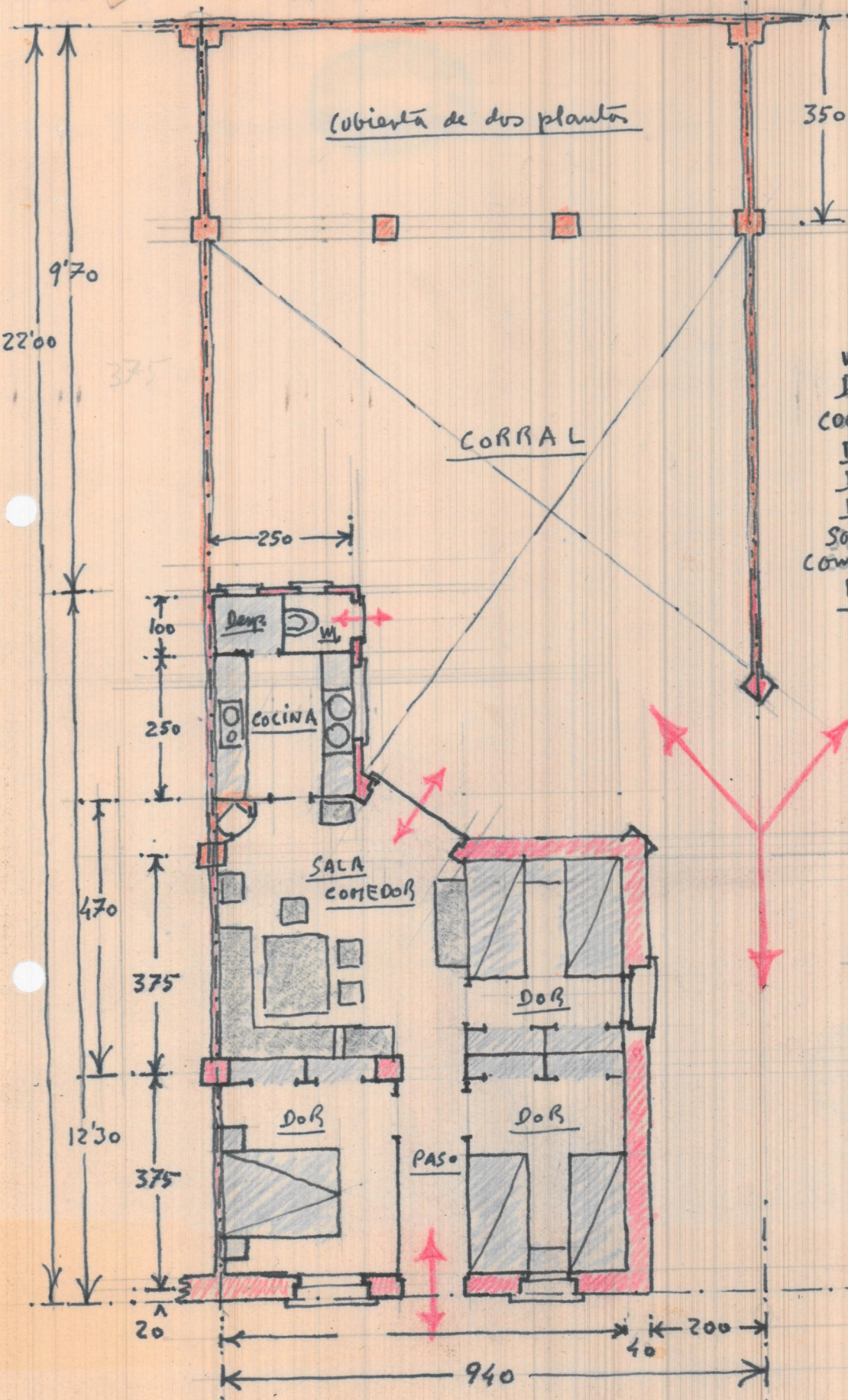


10 m — 7 "
 0.20 — 4 "
 67 m
 Parcela — 32 "
 99 m²



LAVADERO





Cubierta de dos plantas

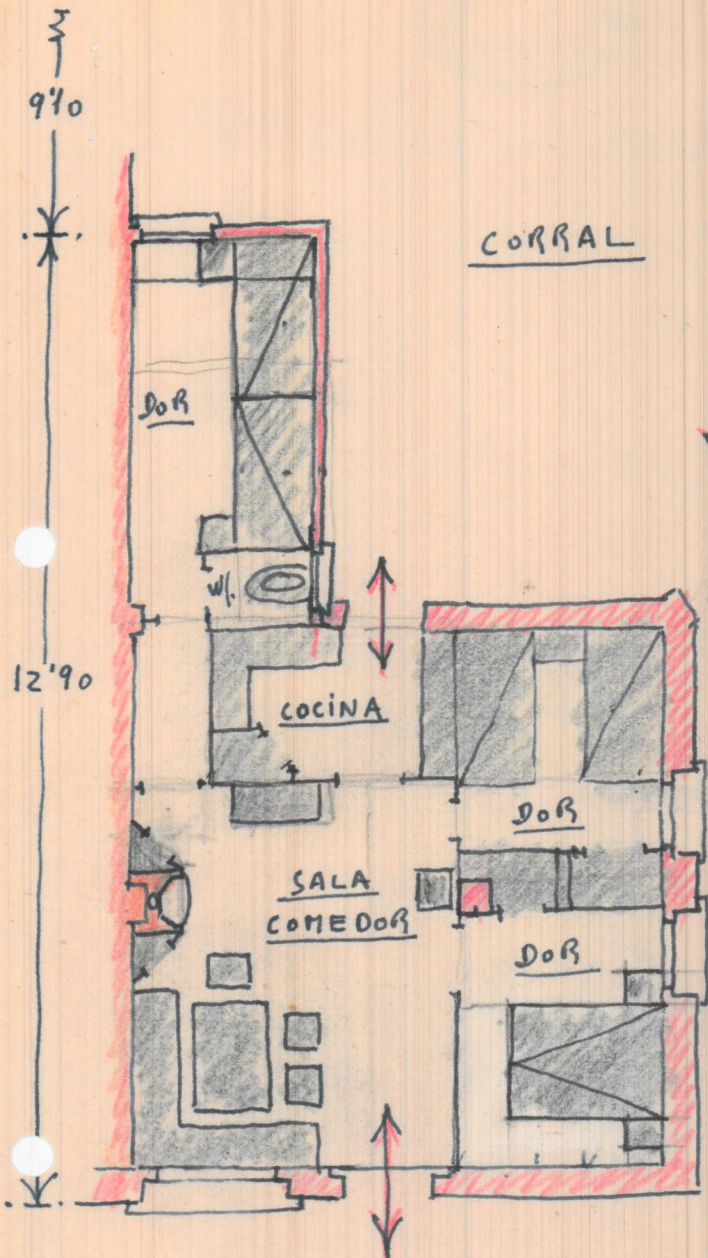


w.f — 1'00 x 1'10 = 1'10
 Desp — 1'00 x 1'25 = 1'25
 Cocina — 2'35 x 2'50 = 5'87
 Dor — 2'70 x 3'30 = 8'91
 Dor — 2'70 x 3'70 = 9'99
 Dor — 3'00 x 3'70 = 11'10
 Sala } 4'30 x 3'40 = 14'62
 Comedor } 3'30 x 1'00 = 3'30
 Paso — 1'20 x 3'70 = 4'44

 U Tiel — 60'58 m



2



DOR	- 2'35 x 4'00 =	9'40
W.F.	- 1'40 x 1'30 =	1'43
Paso	- 3'10 x 1'00 =	3'10
Cocina	- 3'20 x 2'00 =	6'40
Dor.	- 2'70 x 3'30 =	8'91
Dor.	- 2'70 x 3'80 =	10'26
Sala (comedor)	- 4'30 x 5'00 =	21'50
<hr/>		
Util	- 61'00 m ²	

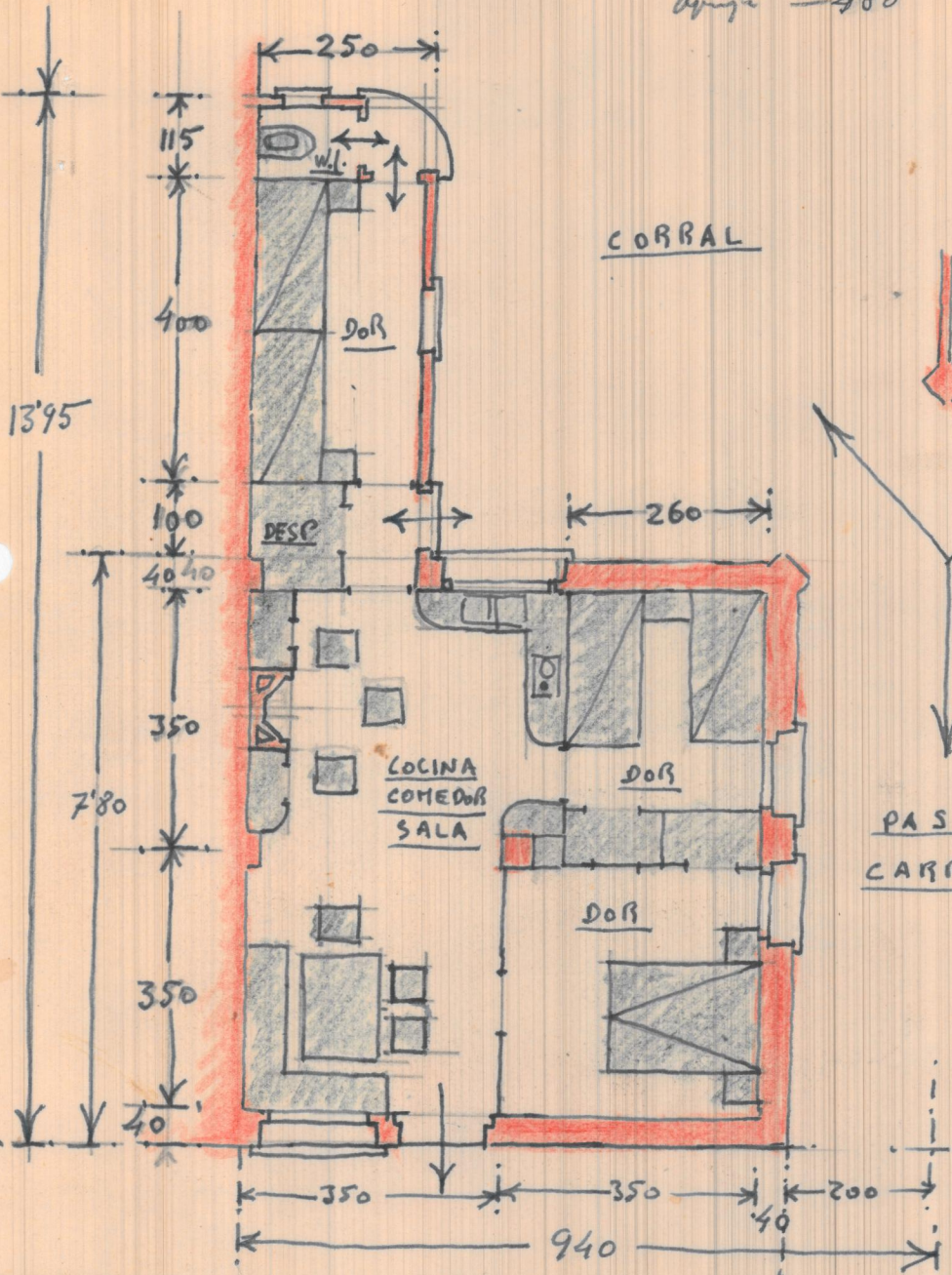
PASO
DE
CARROS



3

Propio — 800
 Man — 800
 aynte — 580

8'05



Wf. — 1'00 x 1'30 — 1'30
 Dov — 2'35 x 4'00 — 9'40
 Pasa Dop — 1'40 x 2'35 — 3'29
 Dov — 2'60 x 3'50 — 8'10
 Dov — 3'50 x 3'50 — 12'25
 Sala (Comedor) — 3'30 x 4'40 — 26'97
 Sala (Comedor) — 3'70 x 3'50

Util — 61'31 m²



Cuerpo princ.
 7'40 x 7'80 = 57'72

Cuerpo poste.
 2'50 x 5'00 = 12'50

Wf.
 1'15 x 1'50 = 1'72

Construccion — 71'94 m²

Cubierta
 3'50 x 9'40 = 32'90 m²

104'84 m²

52'220 ps.
 21

52'22
 104'84
 109'66 20 x 0'29

Jo. 801 121

Arquitecto — 1.462