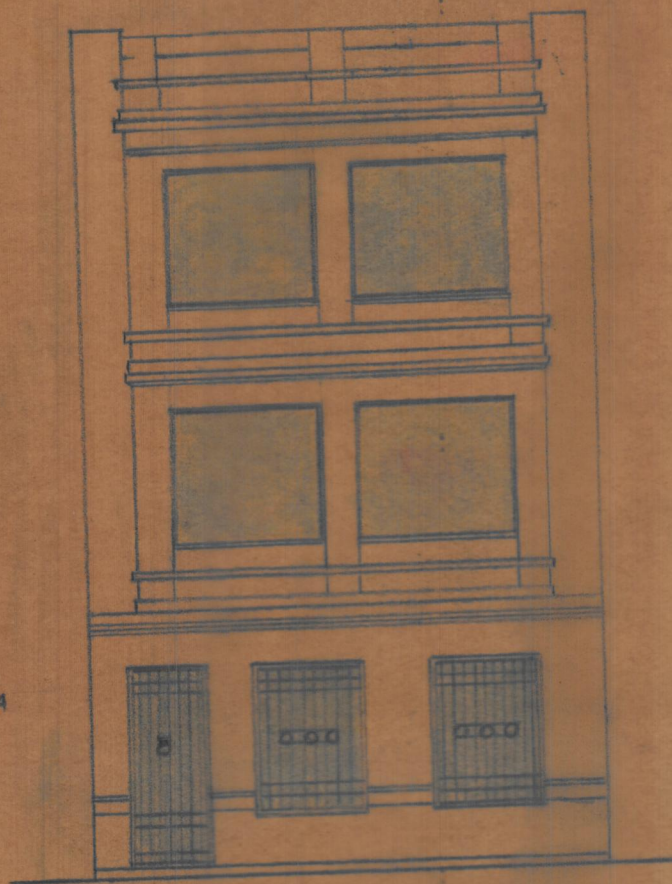


PROYECTO DE EDIFICIO  
 PARA D. VICENTE TRILLES  
VALENCIA

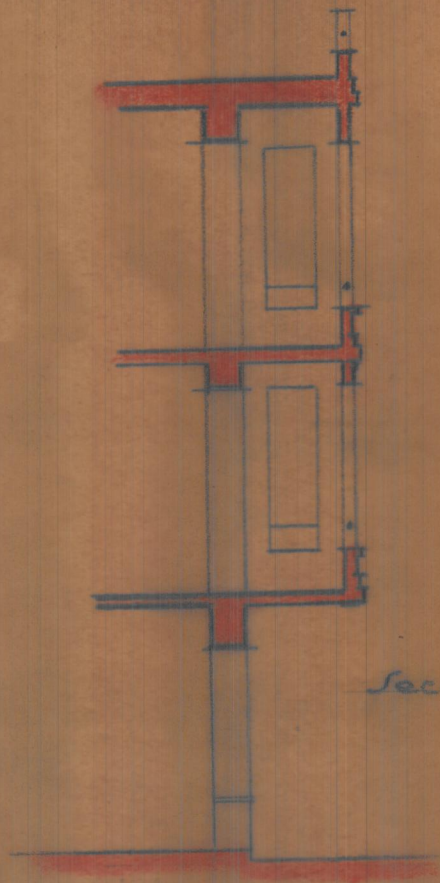
Escala 1:100  
 Valencia Obre 1943  
 El Arquitecto



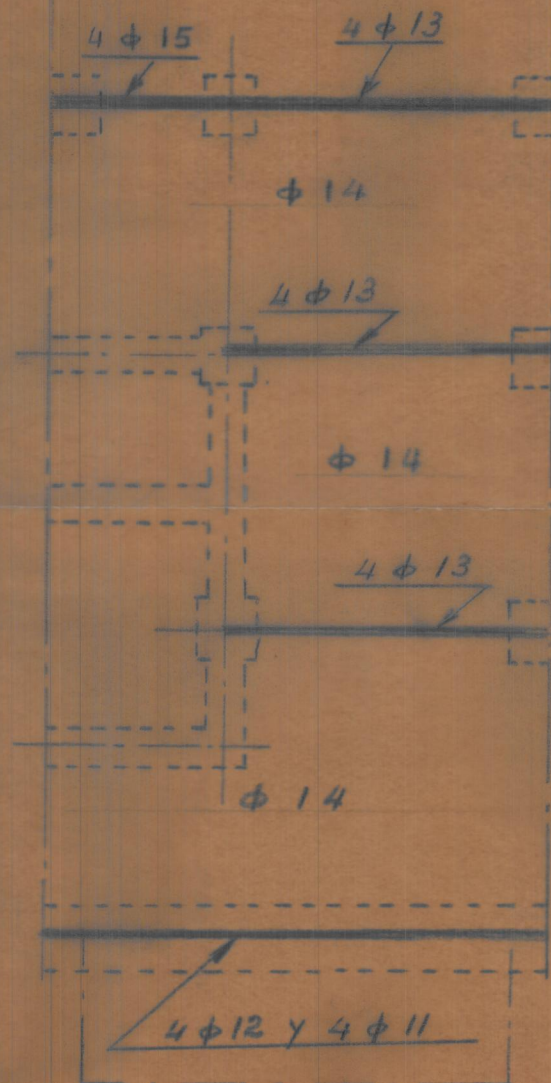
FACHADA



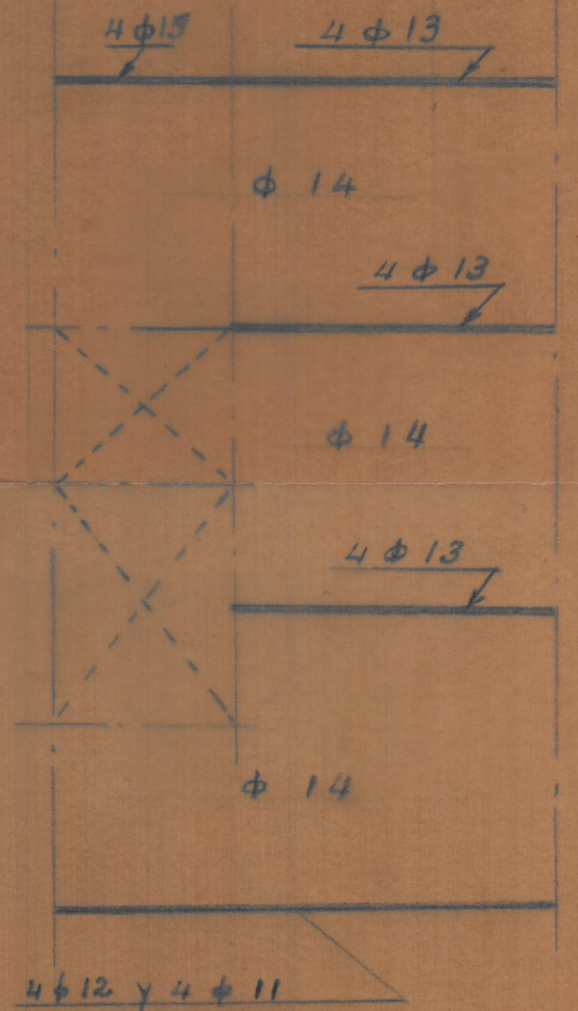
Sección



CIMENTOS Y ENTRAMADOS  
 DE  
 PISO 1º y 2º

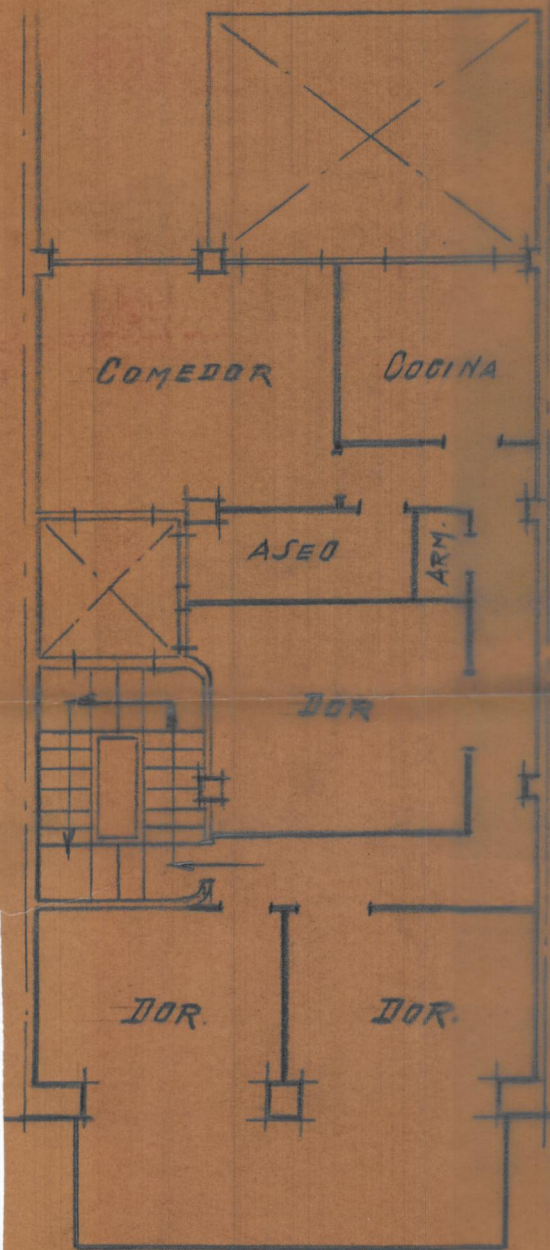


ENTRAMADO 3º PLANTA



COMEDOR

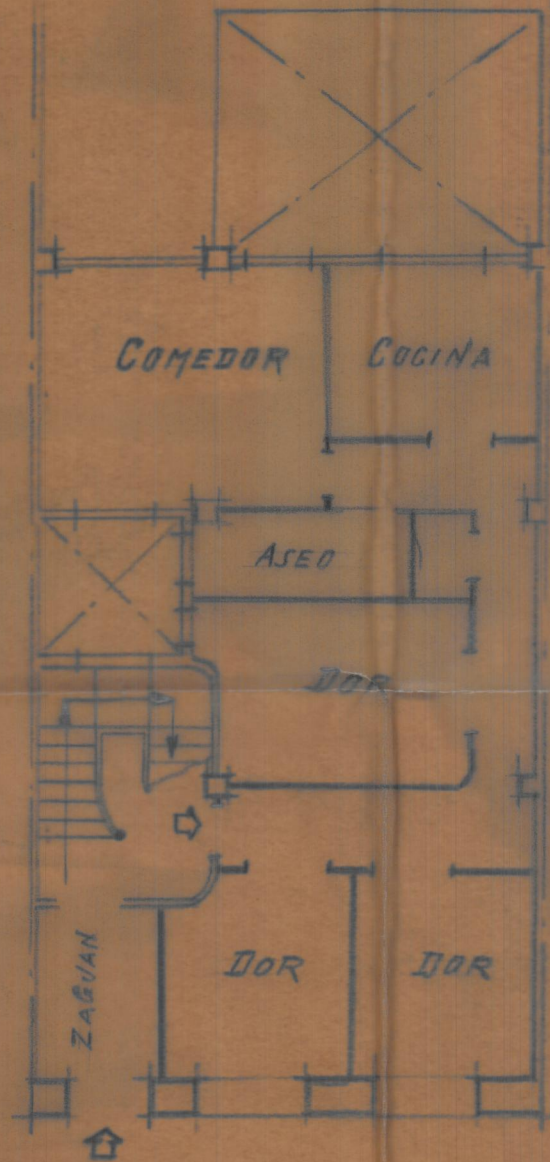
COCINA



PLANTA DE PISOS

COMEDOR

COCINA



PLANTA BAJA