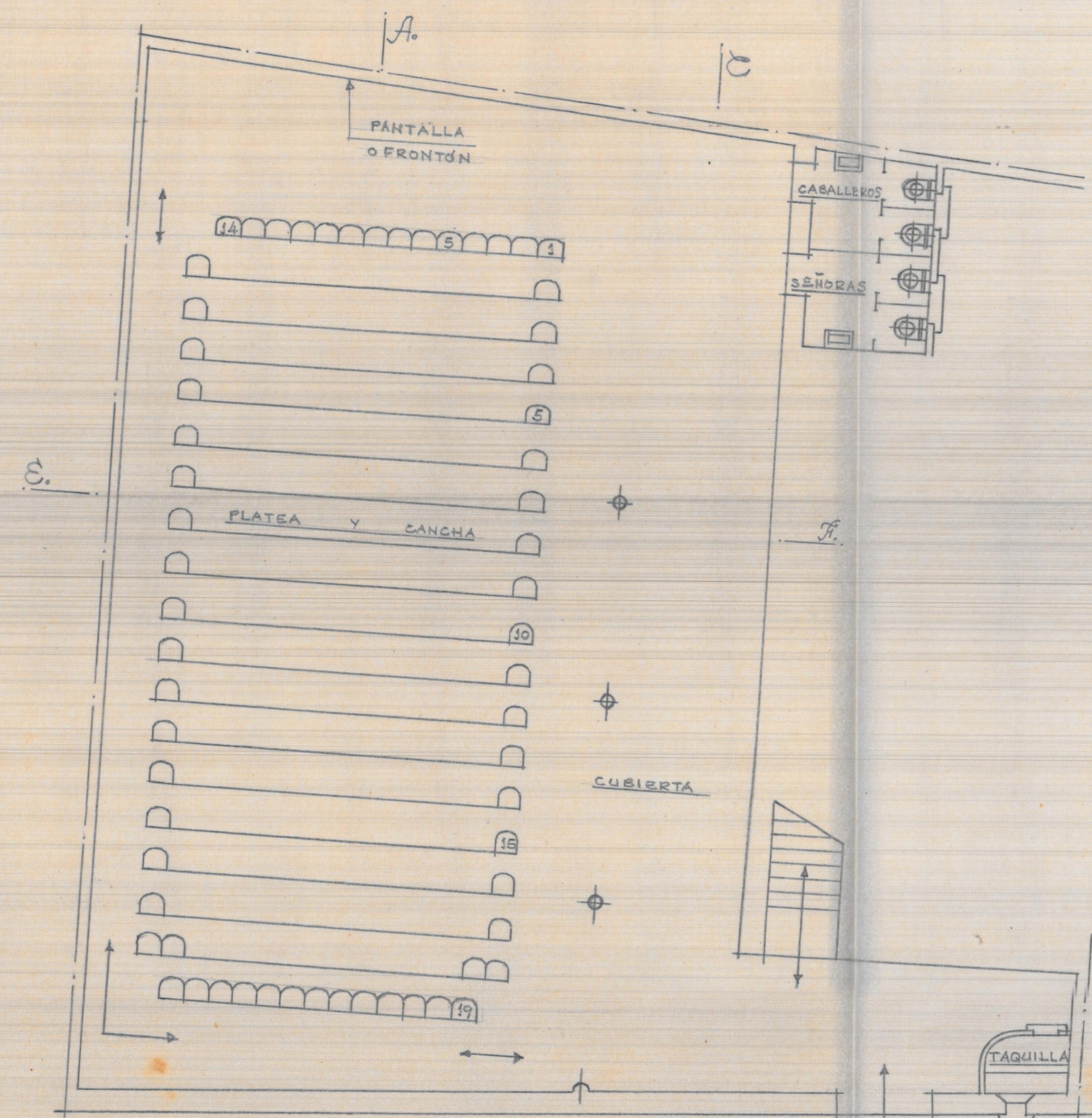
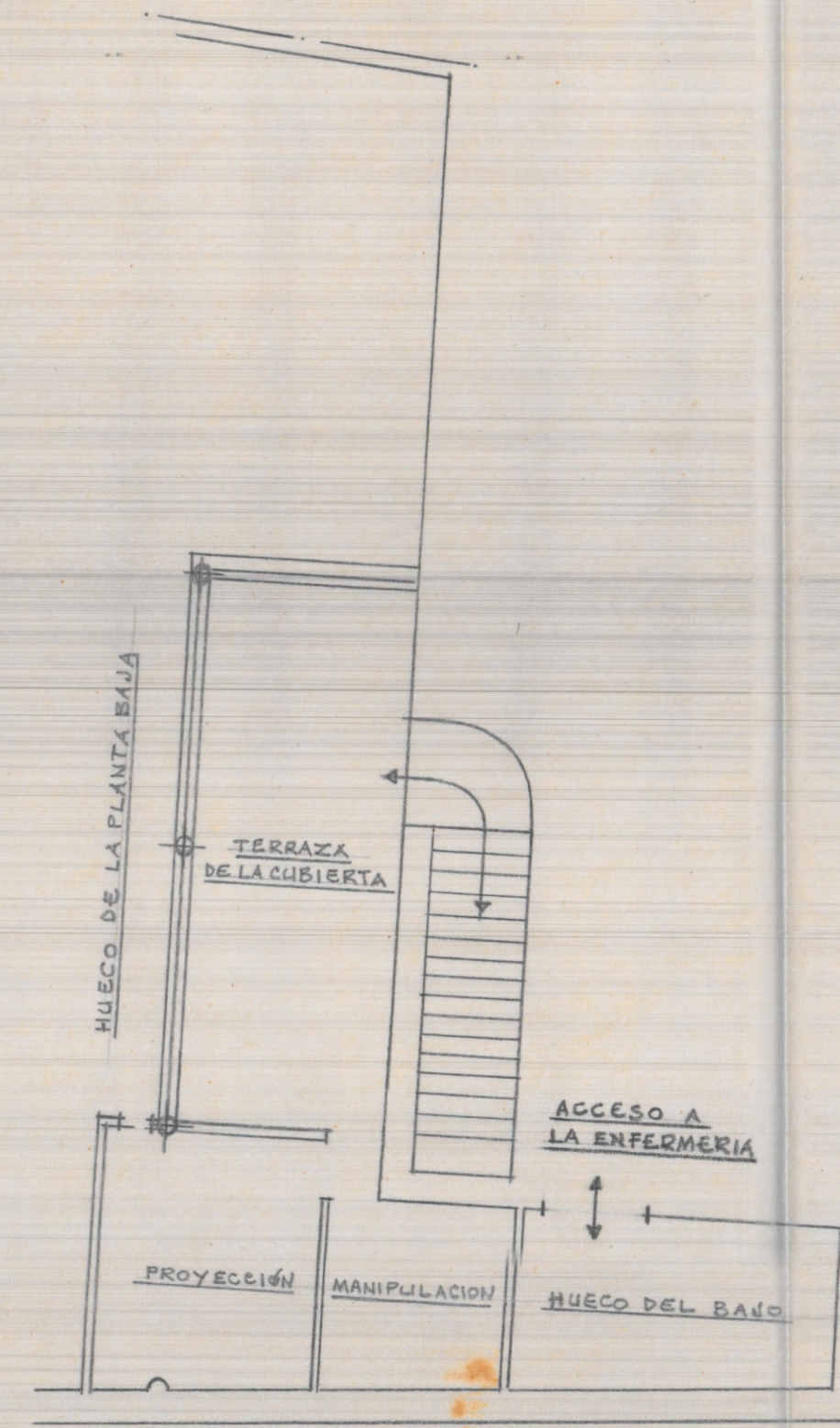


LOCAL DE ESPECTACULOS AL AIRE LIBRE PARA
CINE Y FRONTON EN SIMAT DE VALLDIGNA
ESCALA = 1:500

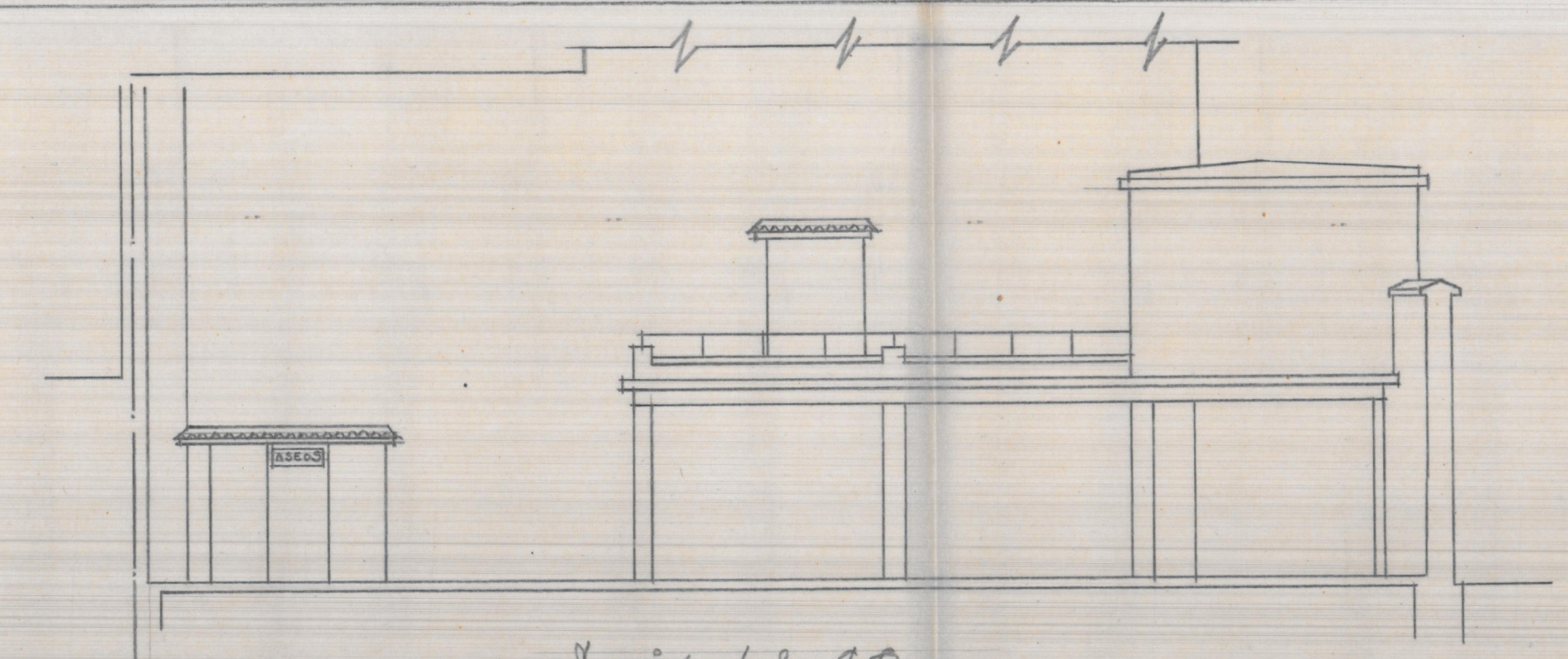
Patencia y Diciembre de 1955
EL ARQUITECTO



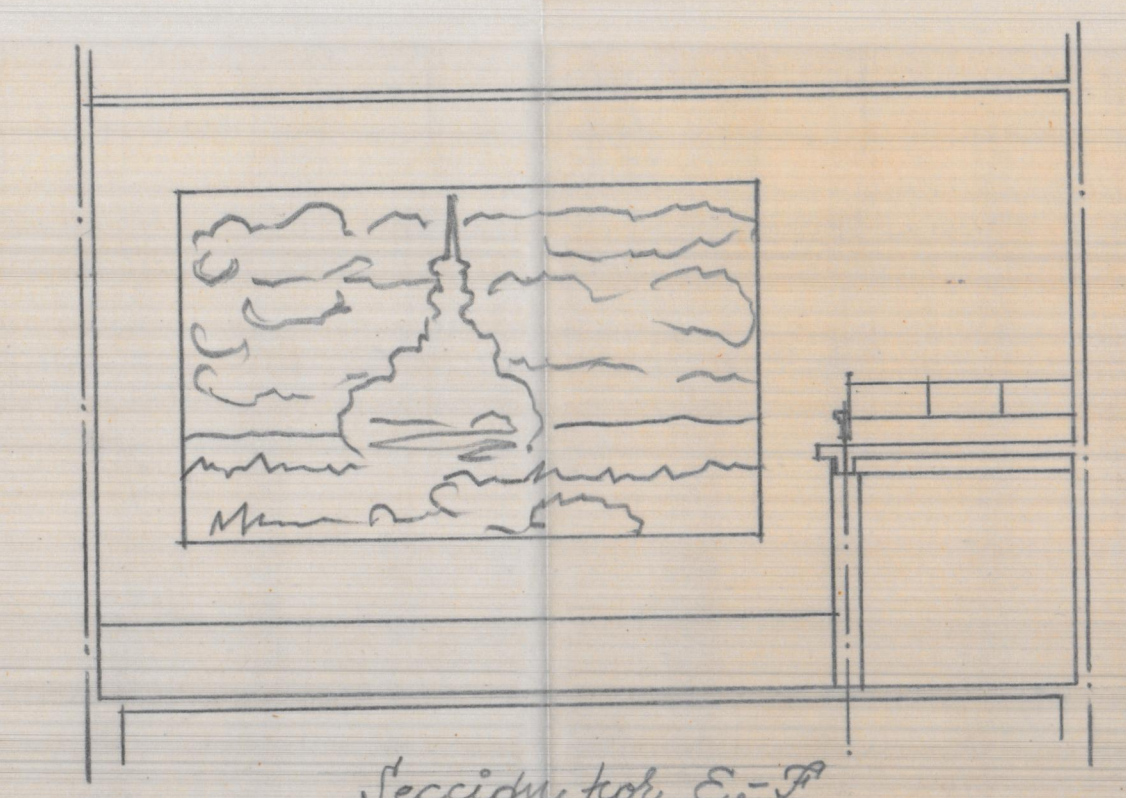
B. *Planta de distribución*



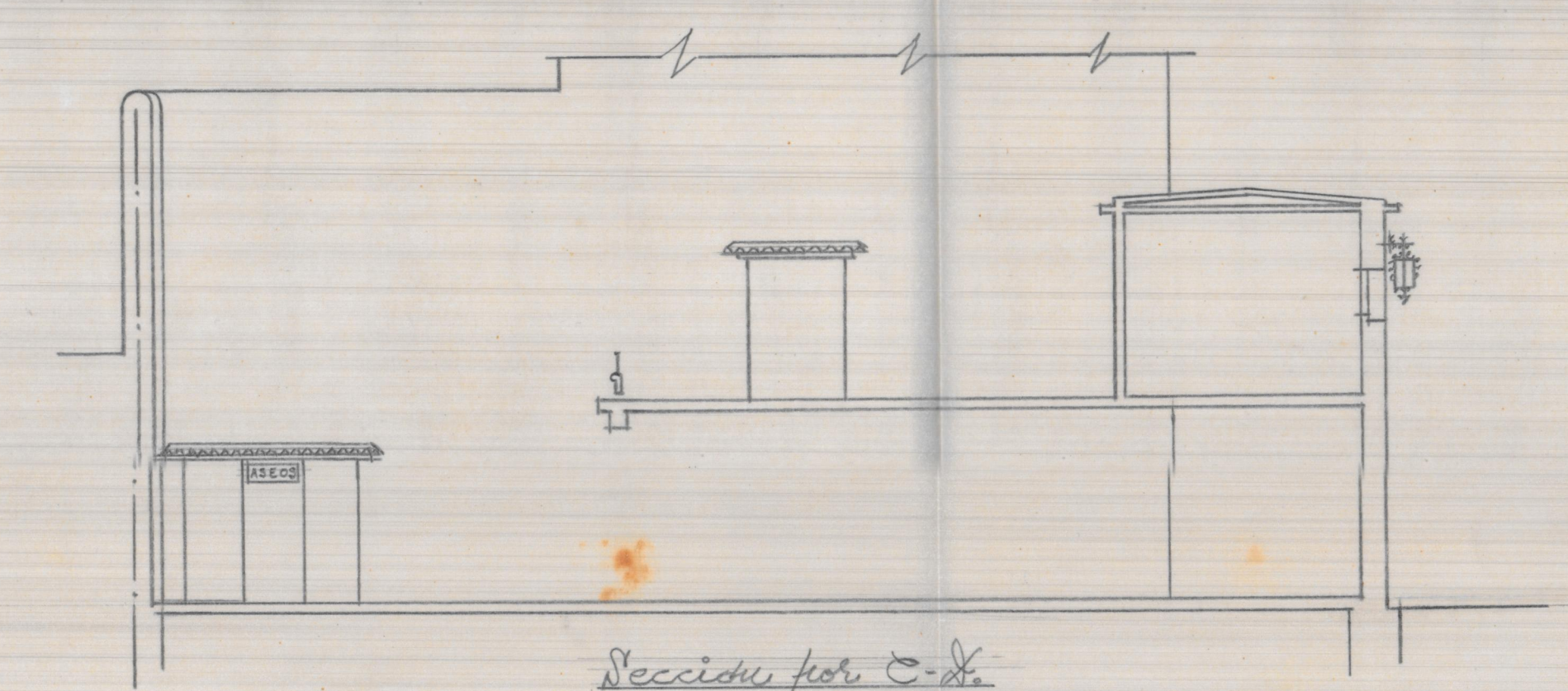
Planta de terraza y cabina



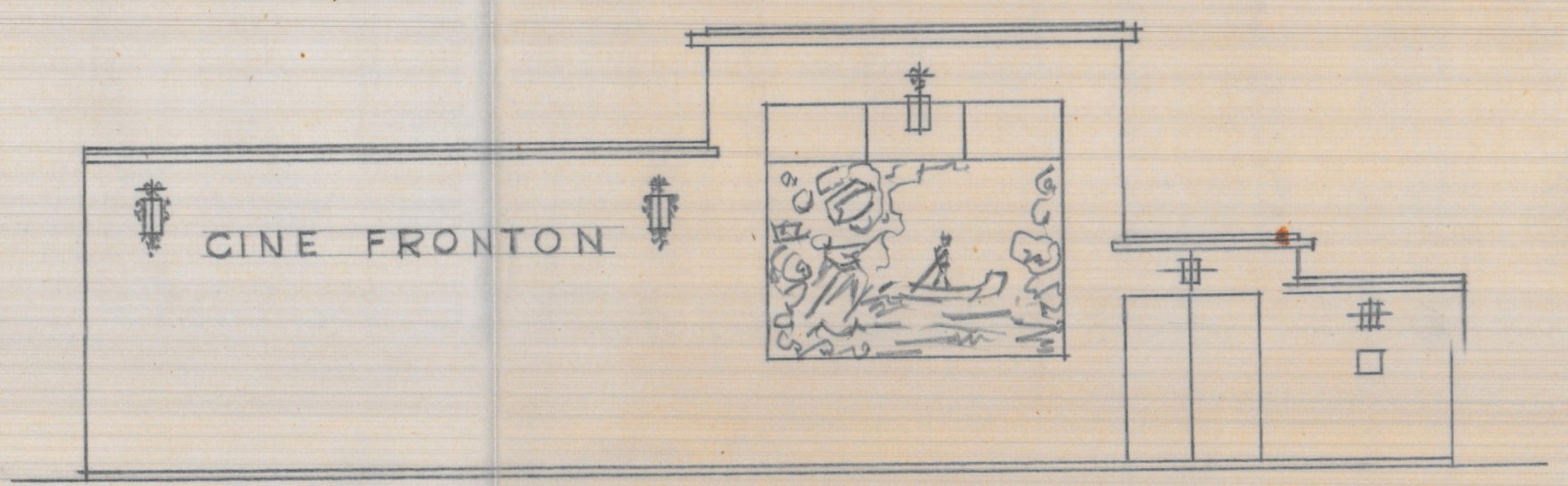
Sección por A-B.



Sección por E-F.



Sección por C-D.



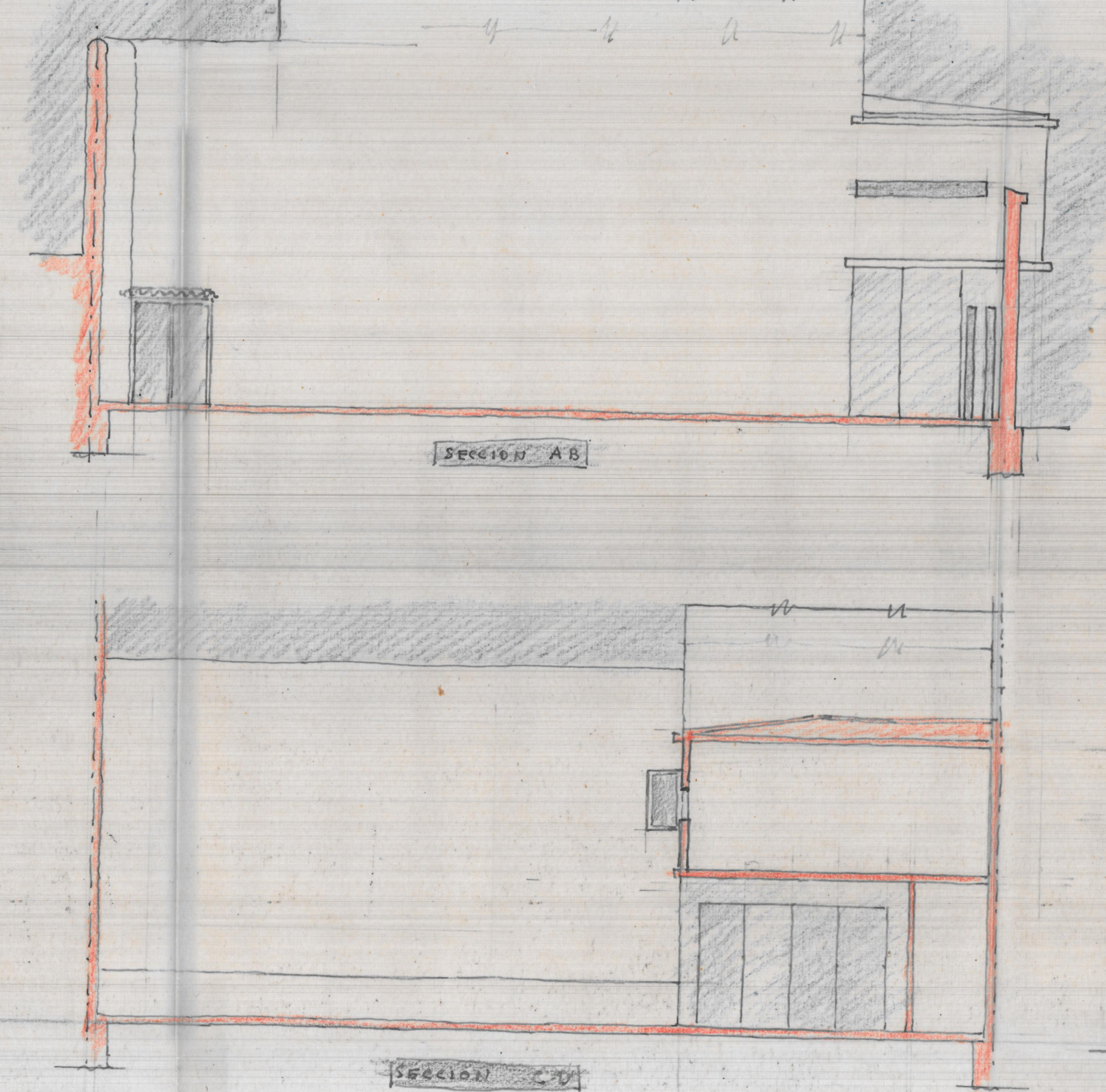
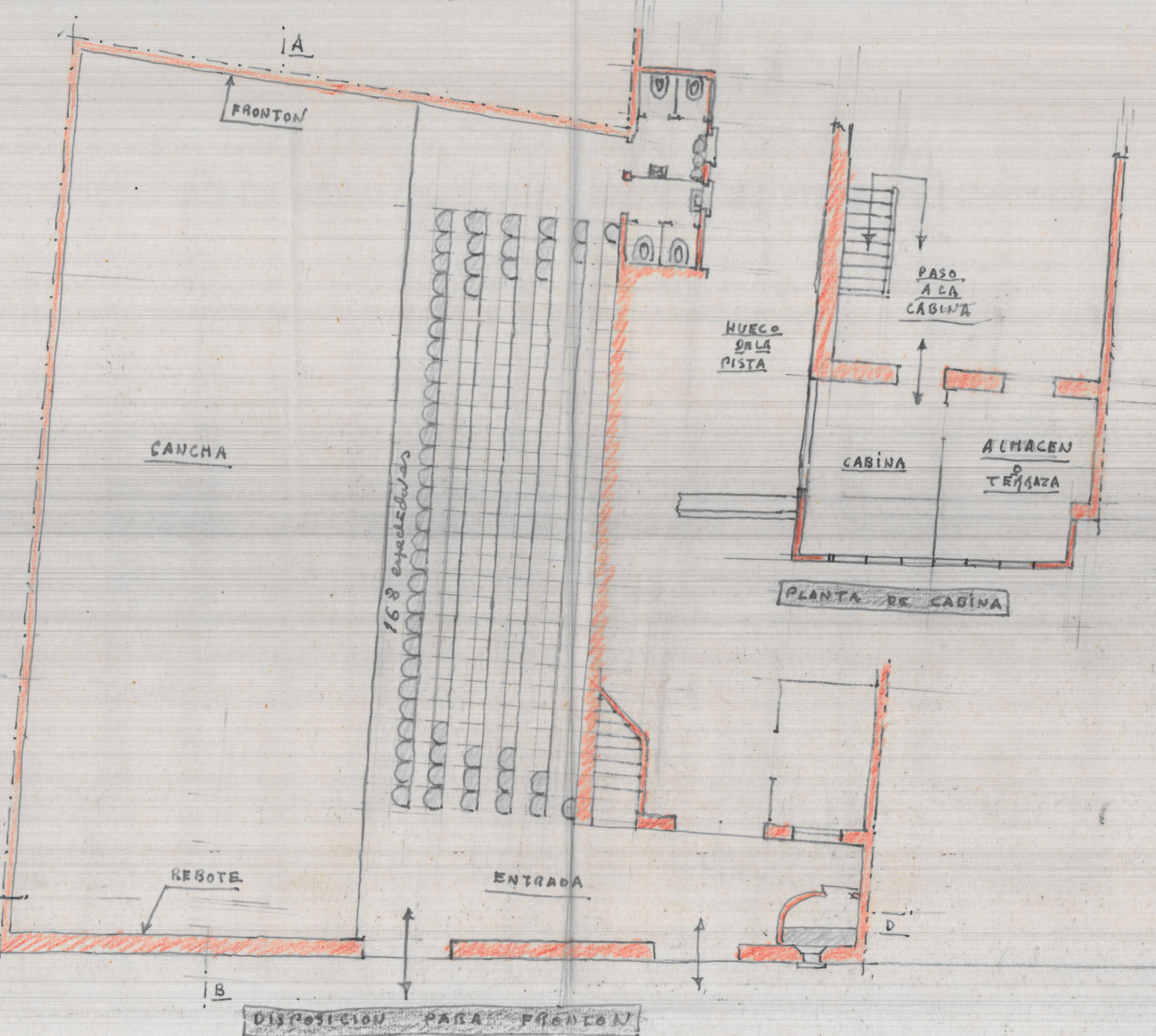
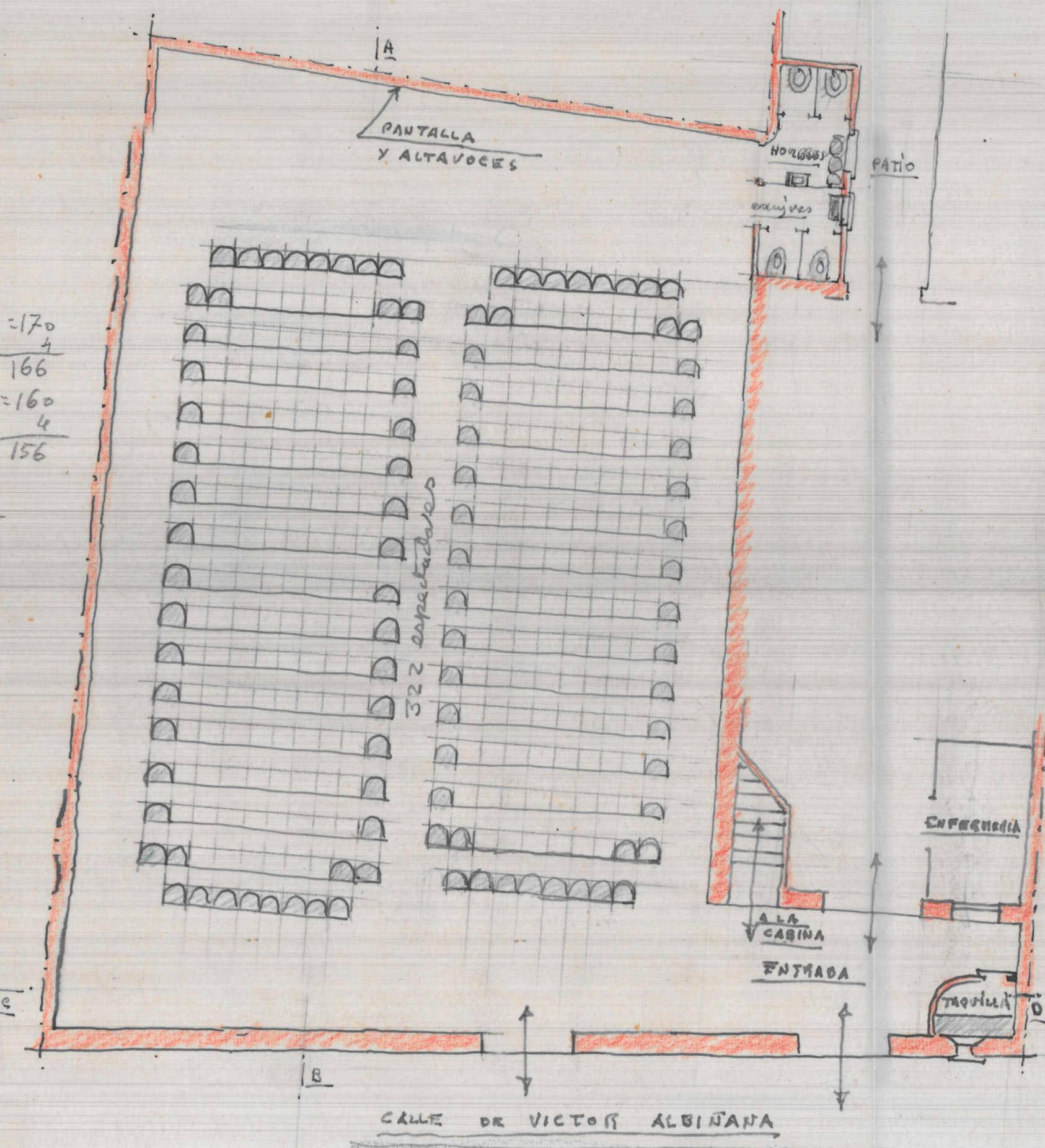
Fachada

LOCAL DE ESPECTACULOS AL
AIRE LIBRE PARA CINE Y FRONTON
EN SIMAT DE VALLDIGNA
ESCALA=1:100

Valencia y Diciembre de 1954
EL ARQUITECTO

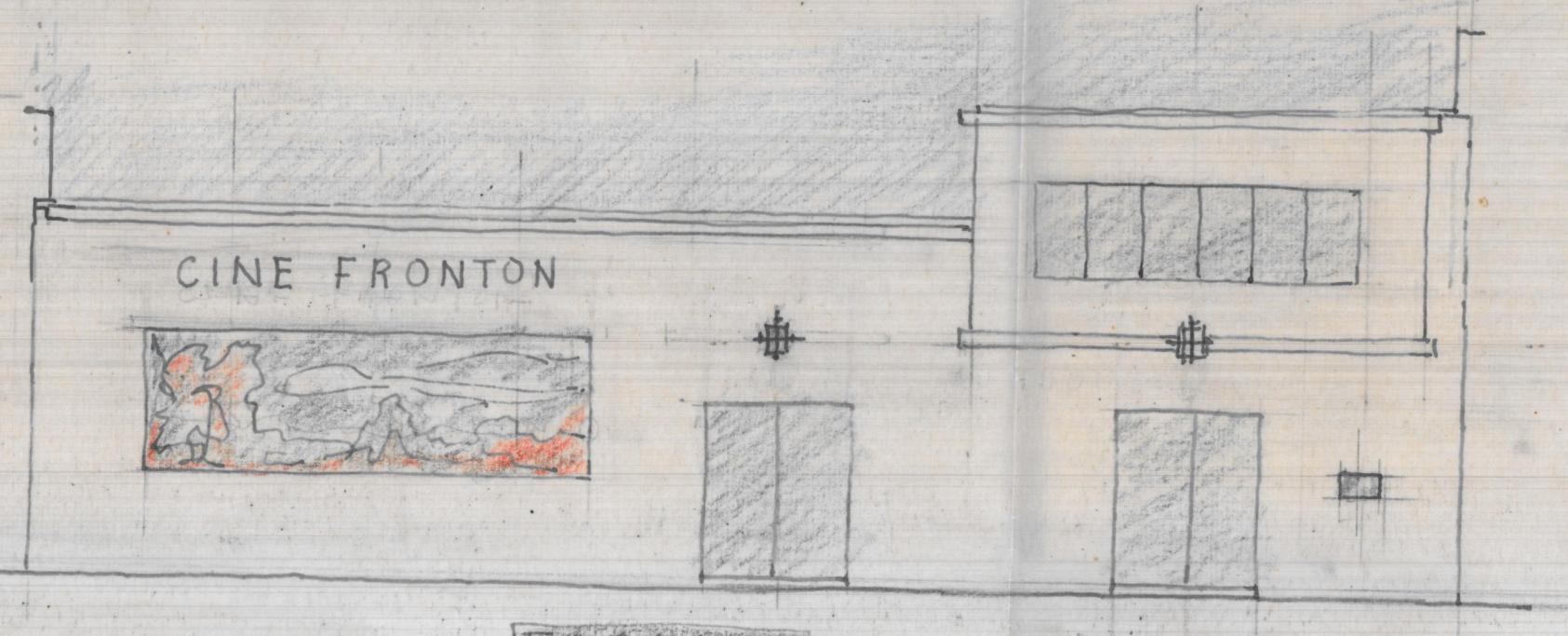
$17 \times 10 = 170$
 $\frac{4}{166}$
 $16 \times 10 = 160$
 $\frac{4}{156}$
 $\frac{166}{156}$
 $\frac{322}{322}$

28 x 6 = 168



LOCAL DE ESPECTACULOS AL AIRE LIBRE
 PARA CINE Y FRONTON EN SINT DE VALLDIGNA
 E. - 1:100

Valensi y Dipinto de 1959
 El arquitecto

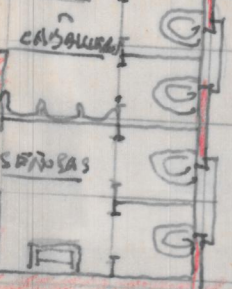


1C

PANTALLA
O FRONTON

A
Y

24 10 5 2



1919
 155
 95
 19
 285
 3
 282

E

PLATEA O CANCHA

F

COBIERTA

A

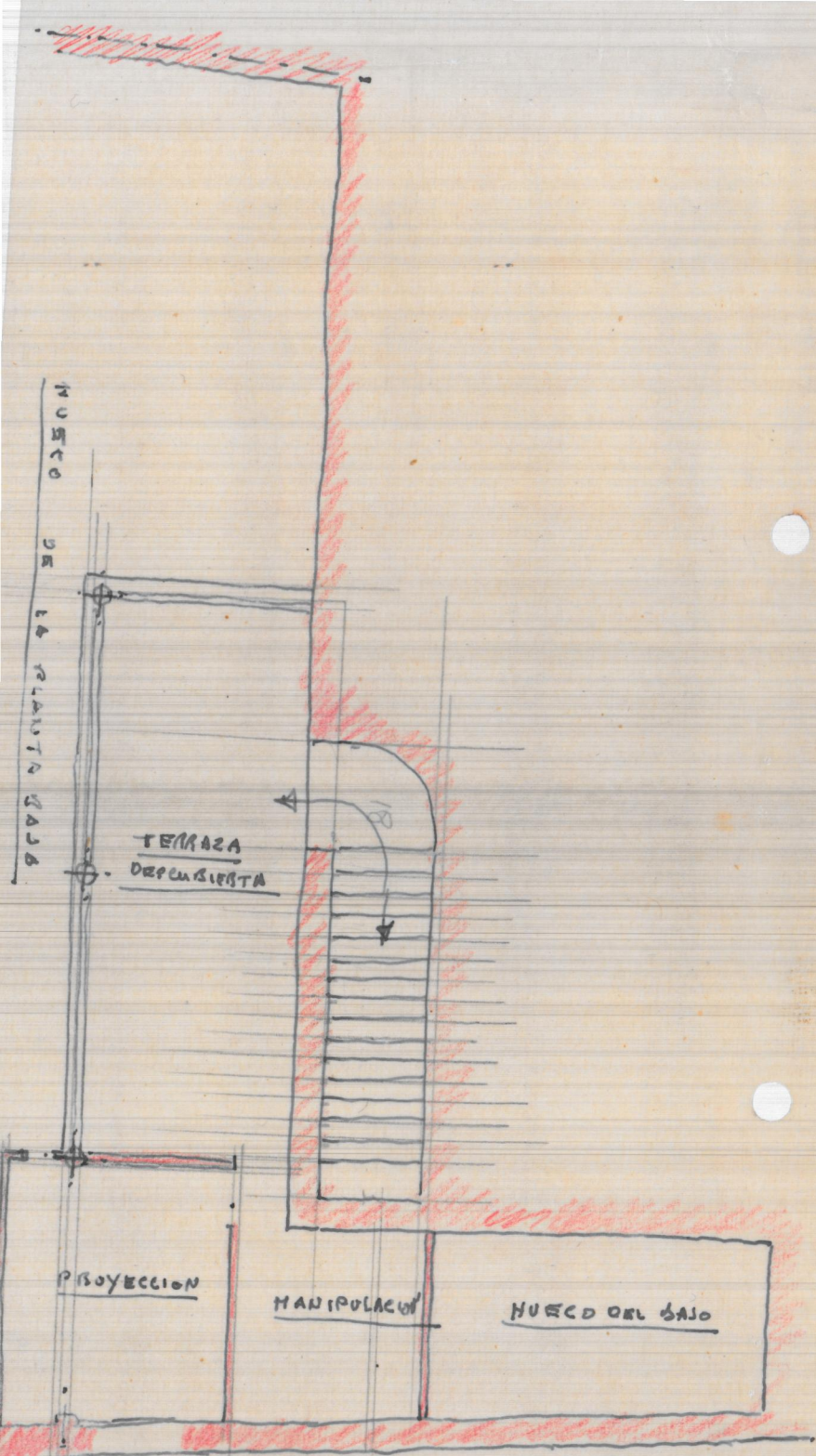
← →

TABUJA

B

D

A
Y



PLANTA DE TERRAZA
Y CABINA