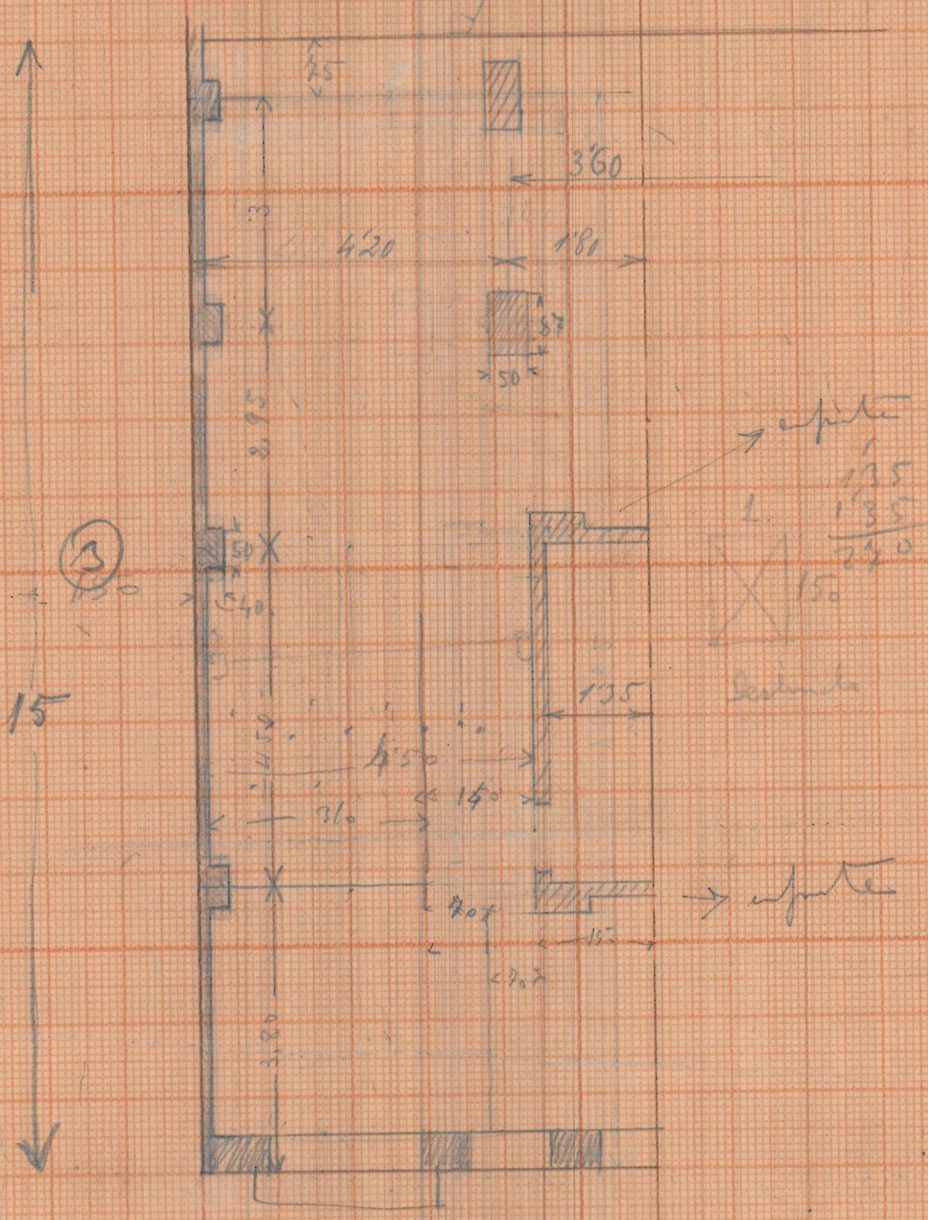
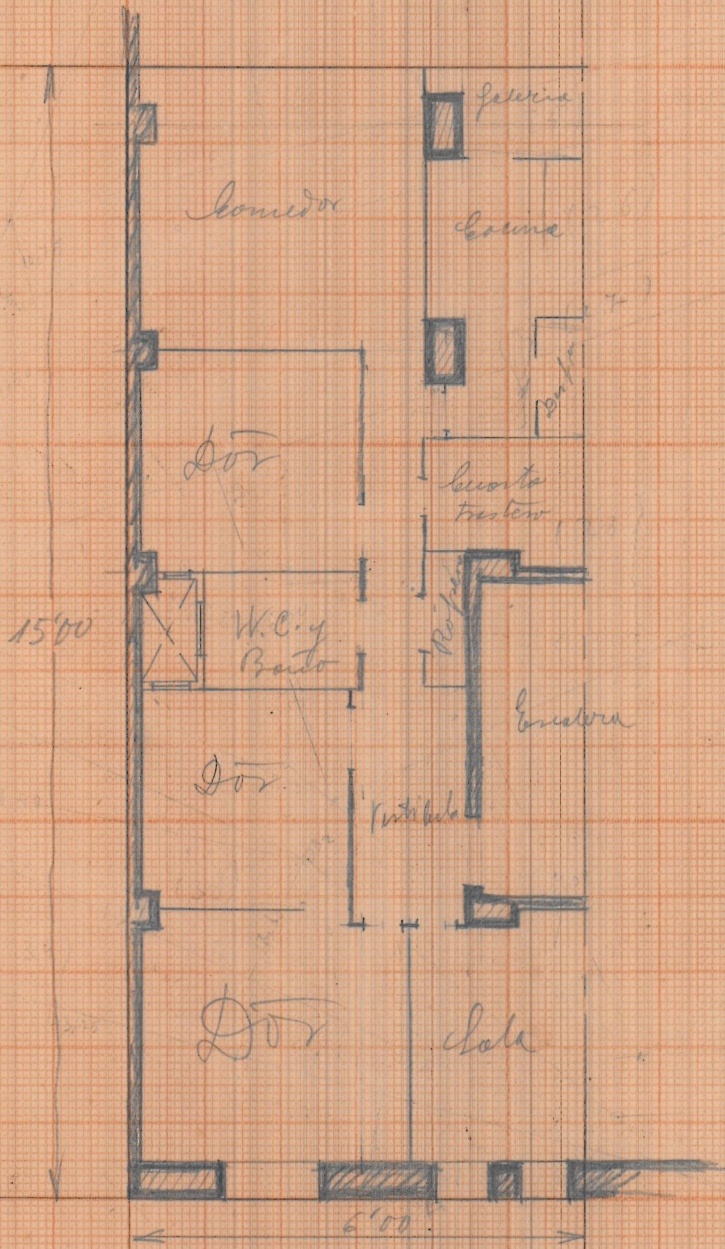


base L. Ford



Escala 1:100







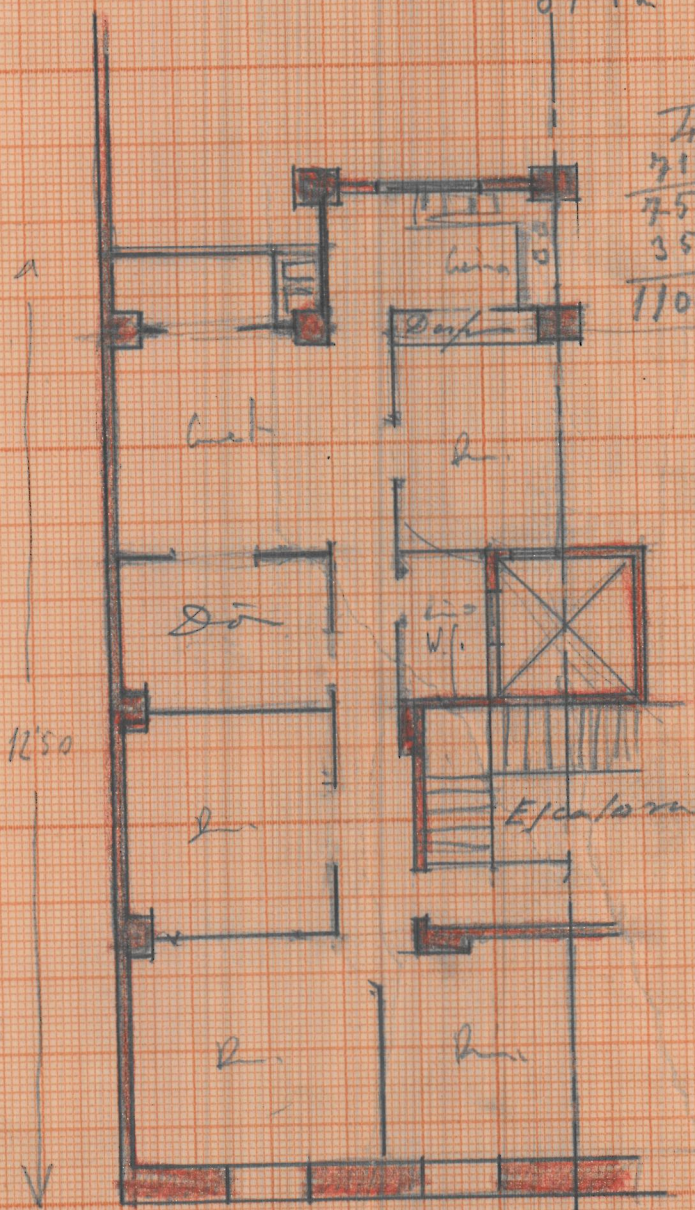




21

Pisos 38 m<sup>2</sup> x 10 = 380 m<sup>2</sup>  
 Atteyo 57 m<sup>2</sup> x 20 = 114 m<sup>2</sup>  
 -----  
 894 m<sup>2</sup>

894  
 85  
 -----  
 4470  
 3152  
 -----  
 75990  
 35000  
 -----  
 110990

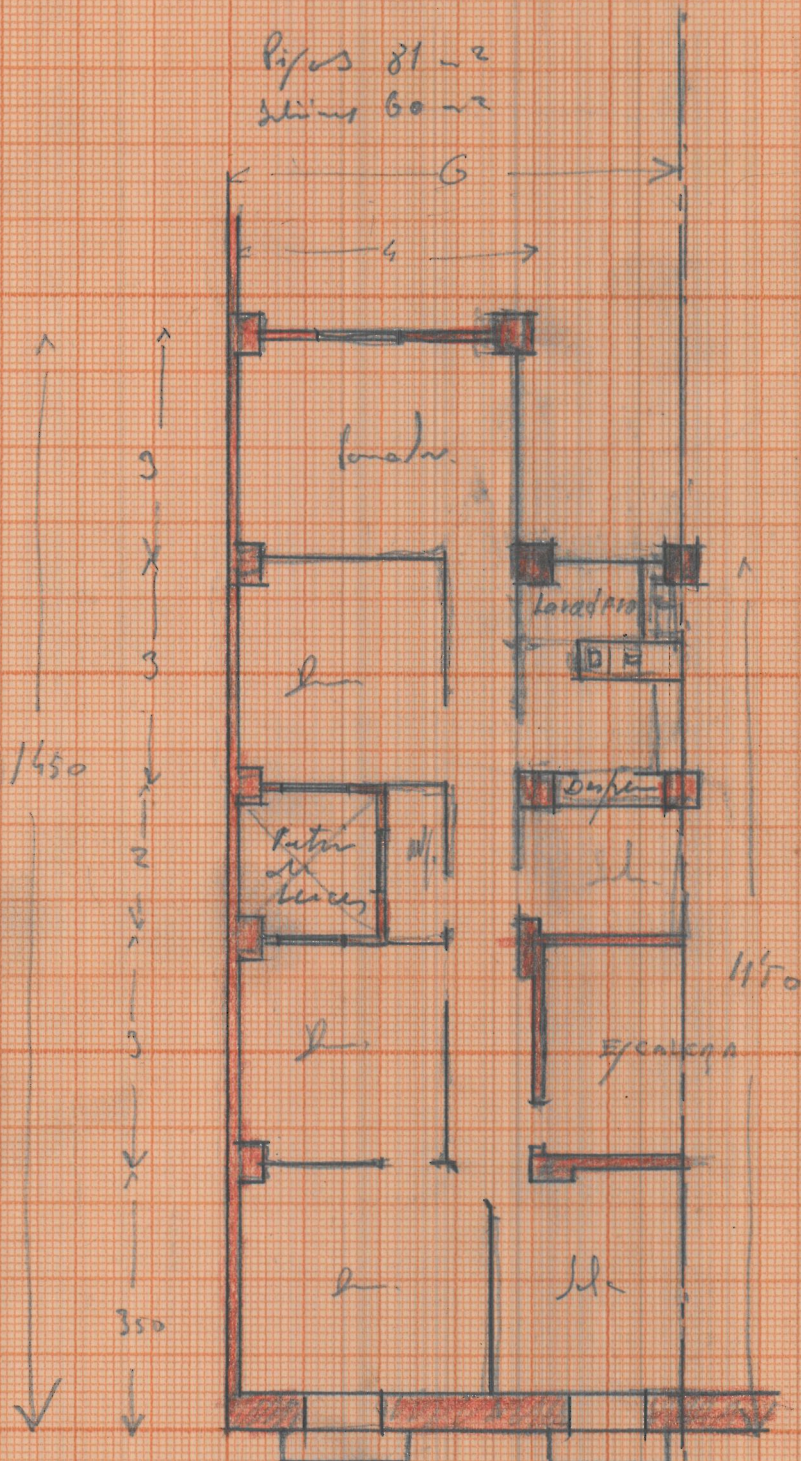


Proyecto arquitectónico  
 Edificio para Parcela



3

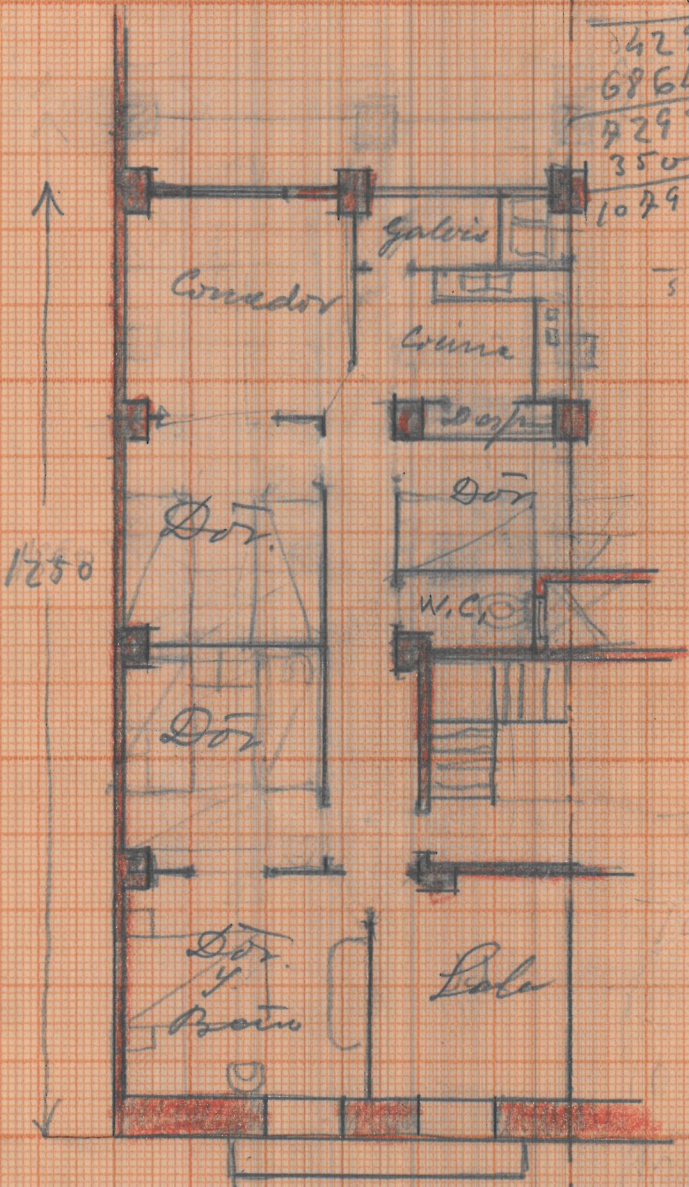
Pipes 81-2  
skins 60-2



Fou 4/empene  
Edificio por Pavell



Pipes 75 = } 75 x 10 = 750 m<sup>2</sup>  
 Wiring 54 = } 54 x 2 = 108  
 858 m<sup>2</sup>  
 85



14290  
 6864  
 92930  
 35000  
 107930

4008  
 11450

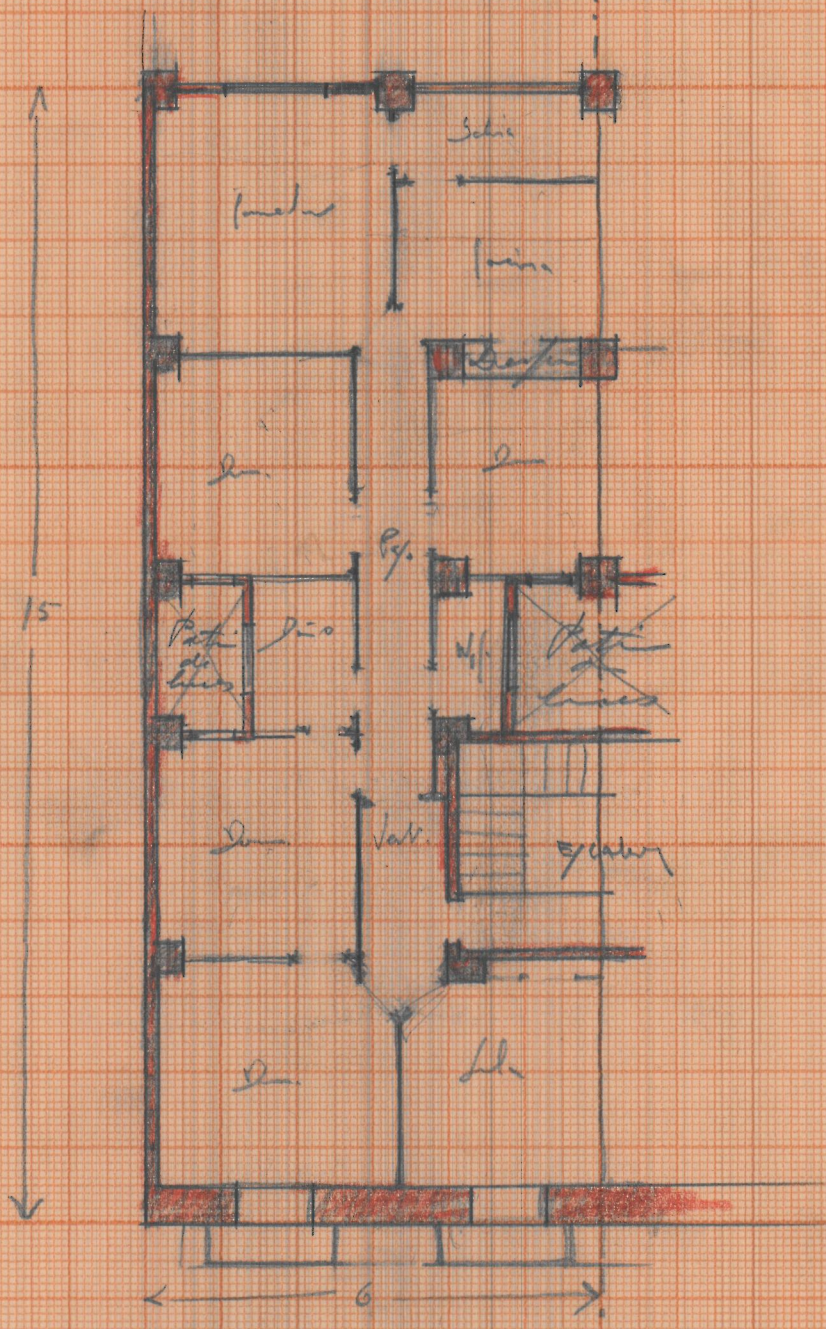
Escala 1:100  
 Tr. 12/empere  
 Edificiu pentru Punct



Edificio Largo  
 Patin en el centro  
 Diferencia de nivel

(1)

$15 \times 6 = 90 \text{ m}^2 \text{ edificio largo}$



112  
 120  
 292  
 150  
 180  
 330

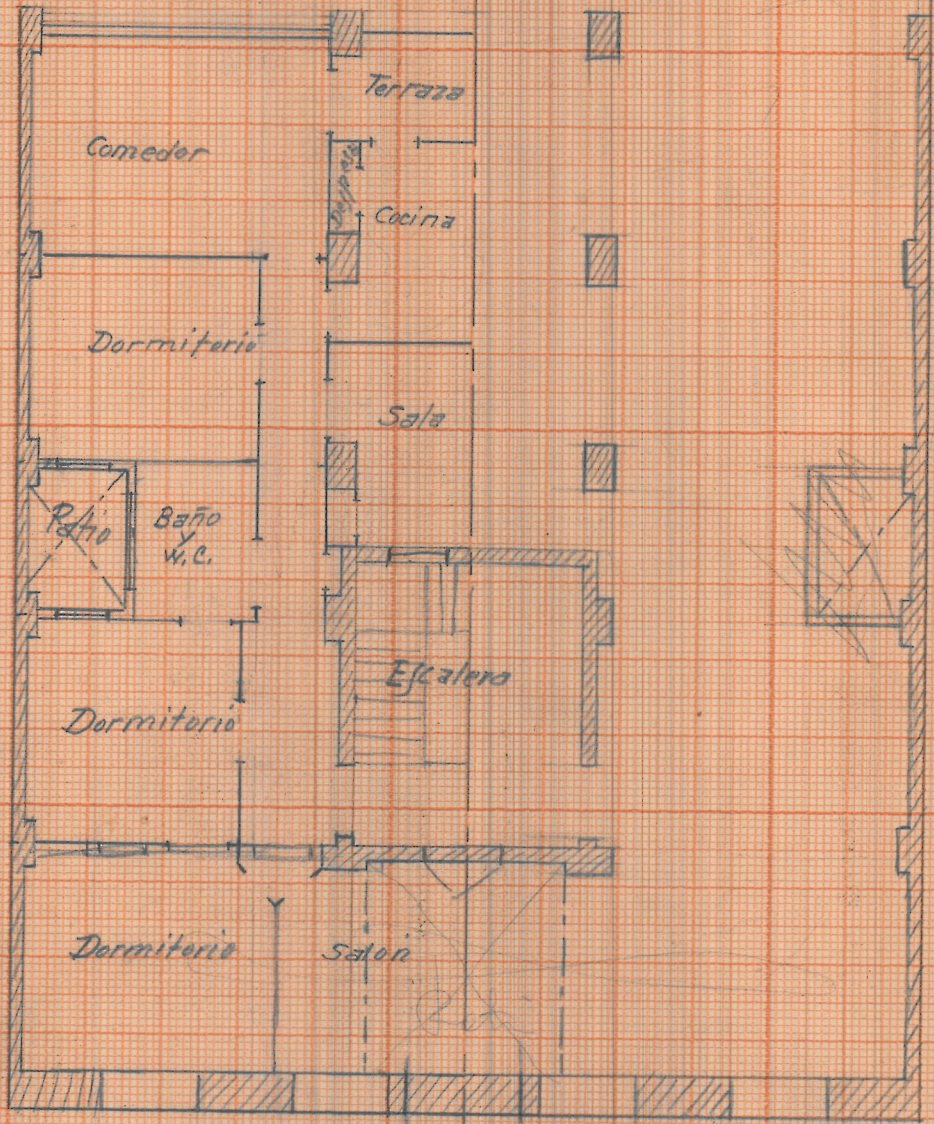
o. agosto - 1922

Fine Empresa  
 Edificio para Pavatti.



32'000  
 14'250  
 17'750

27

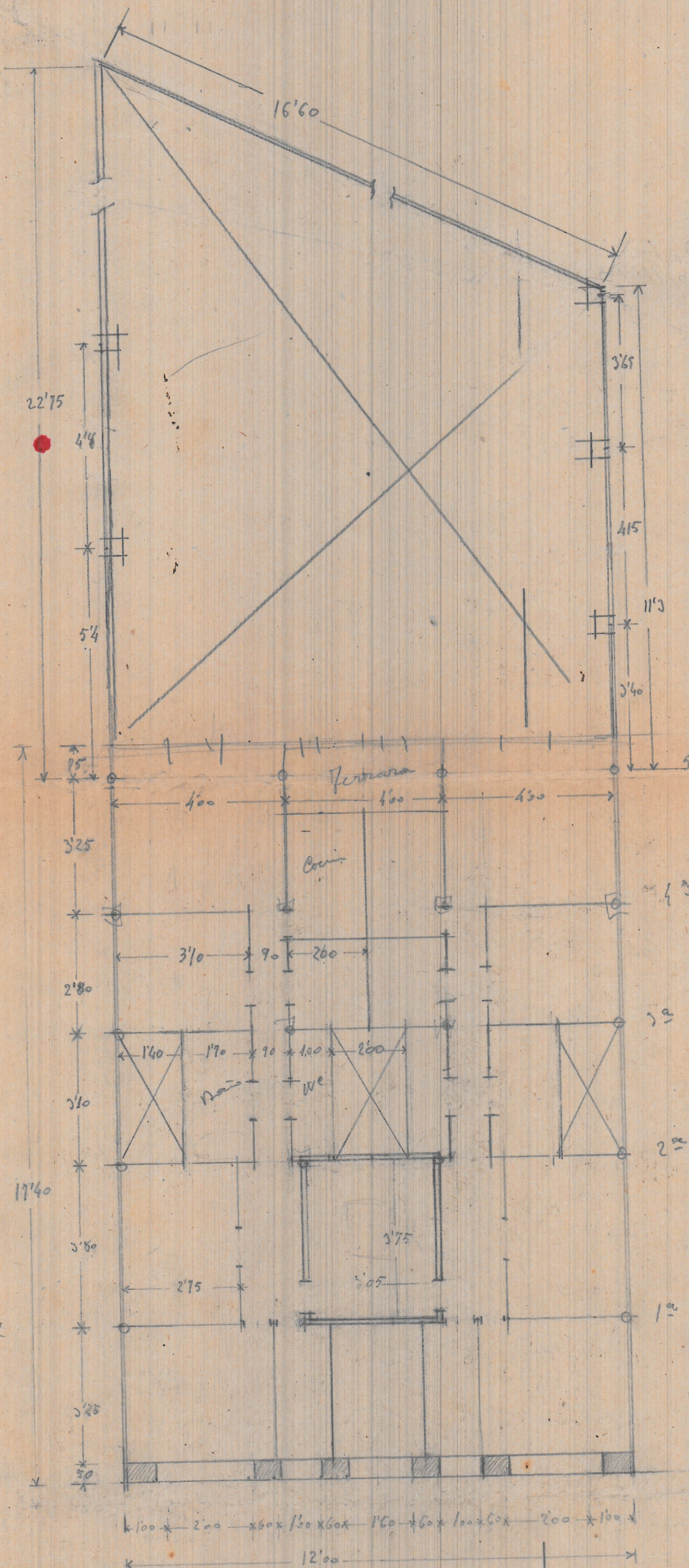


16  
 3  
 19

16  
 5  
 21

16  
 6  
 22





Sección