

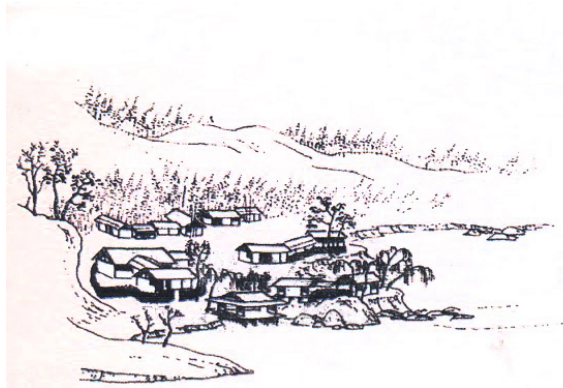


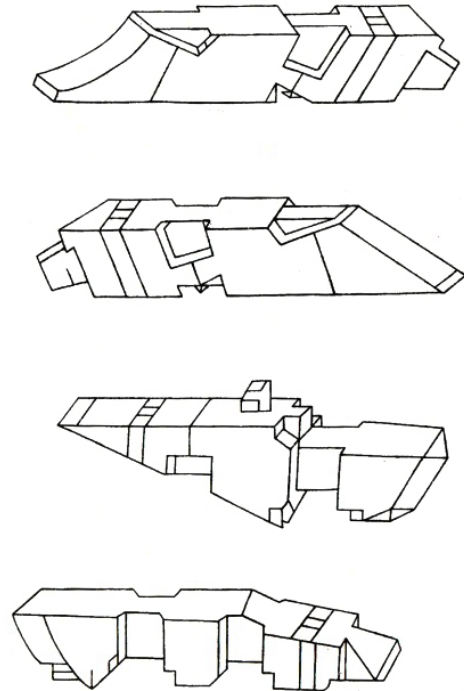
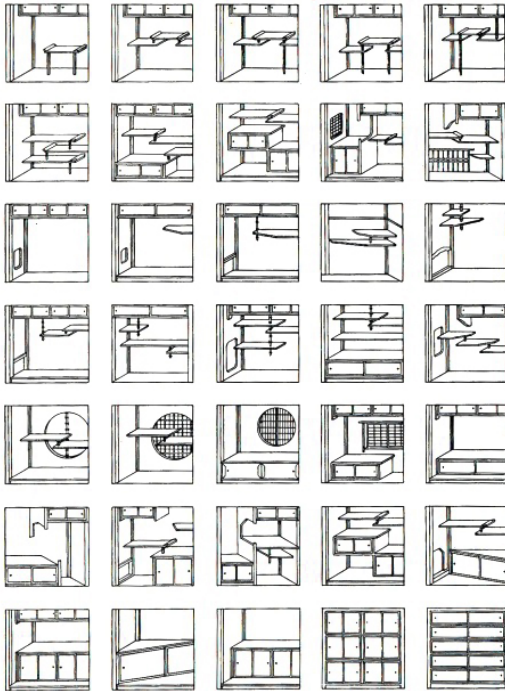
## **7. ANEXOS**

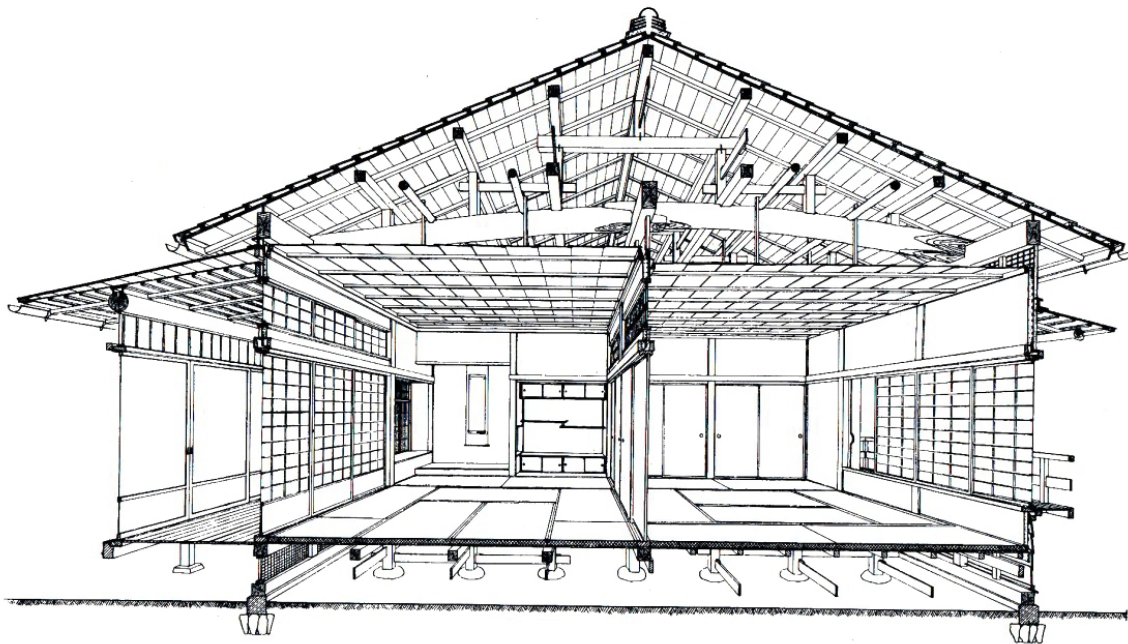


Anexo 1\_Inspiración de oriente (fotos y bocetos de de su viaje a China)















## Anexo 2\_Prototipos construidos del Espansiva (1969) en Dinamarca



Espansiva en Aalborg (1969).





Espansiva en Cowman, Hammerum (1969).





Espansiva en Espergaerde (1969).



Espansiva en Hedin, Birk-  
erod (1969).







Espansiva en Hellebaek  
(1969).





Espansiva en Nykobing  
F(1969).





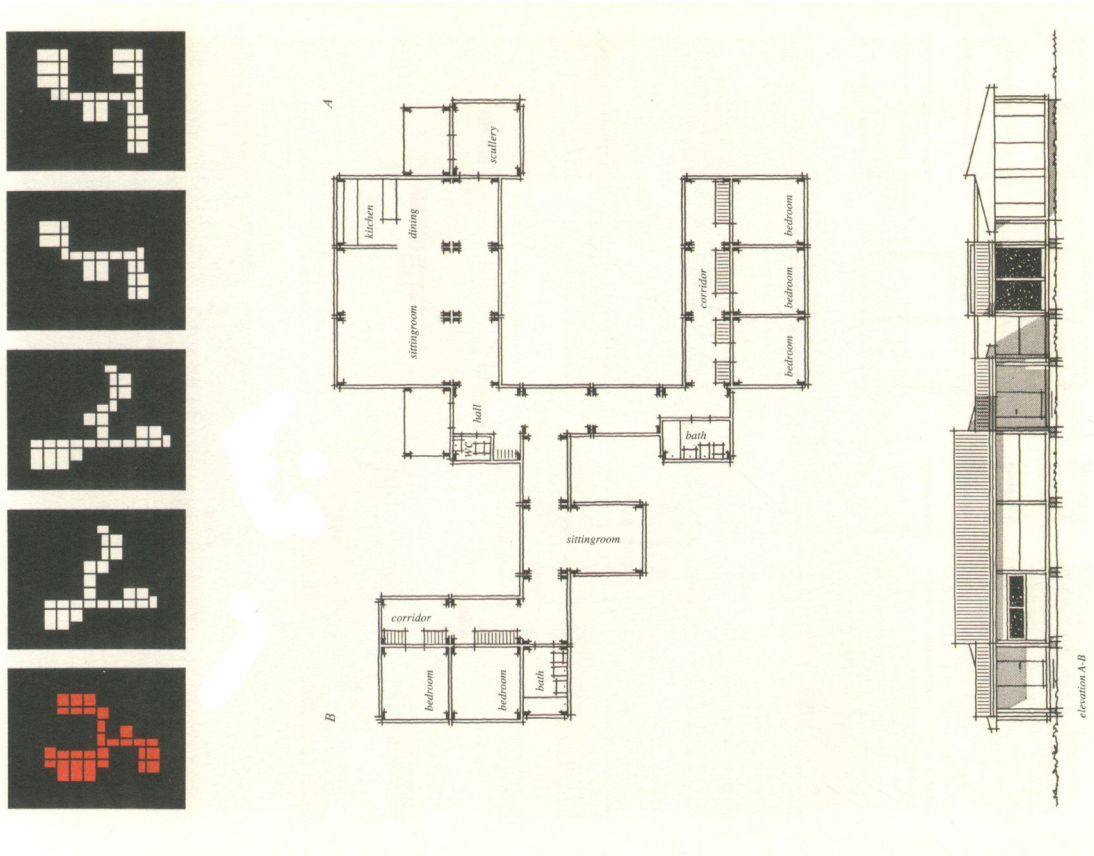
Espansiva en Vordingborg  
(1969).





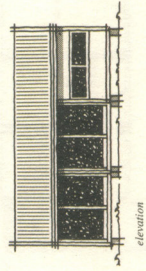
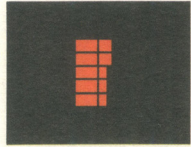
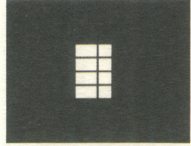
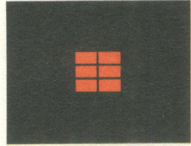
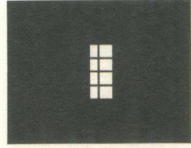
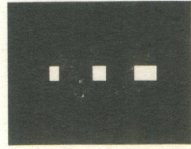
### Anexo 3\_Prototipos no construidos Espansiva

Prototipo elegido y estudiado.

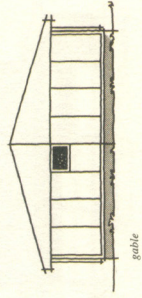




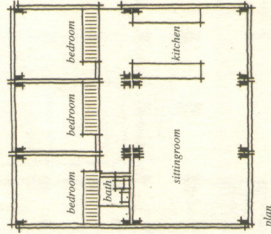
Otros prototipos no construidos.



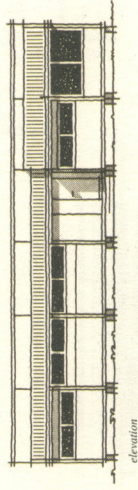
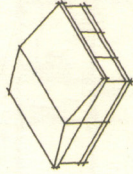
elevation



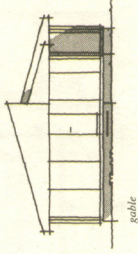
gable



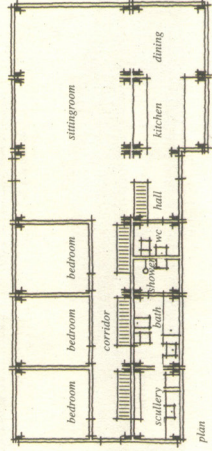
plan



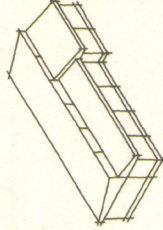
elevation

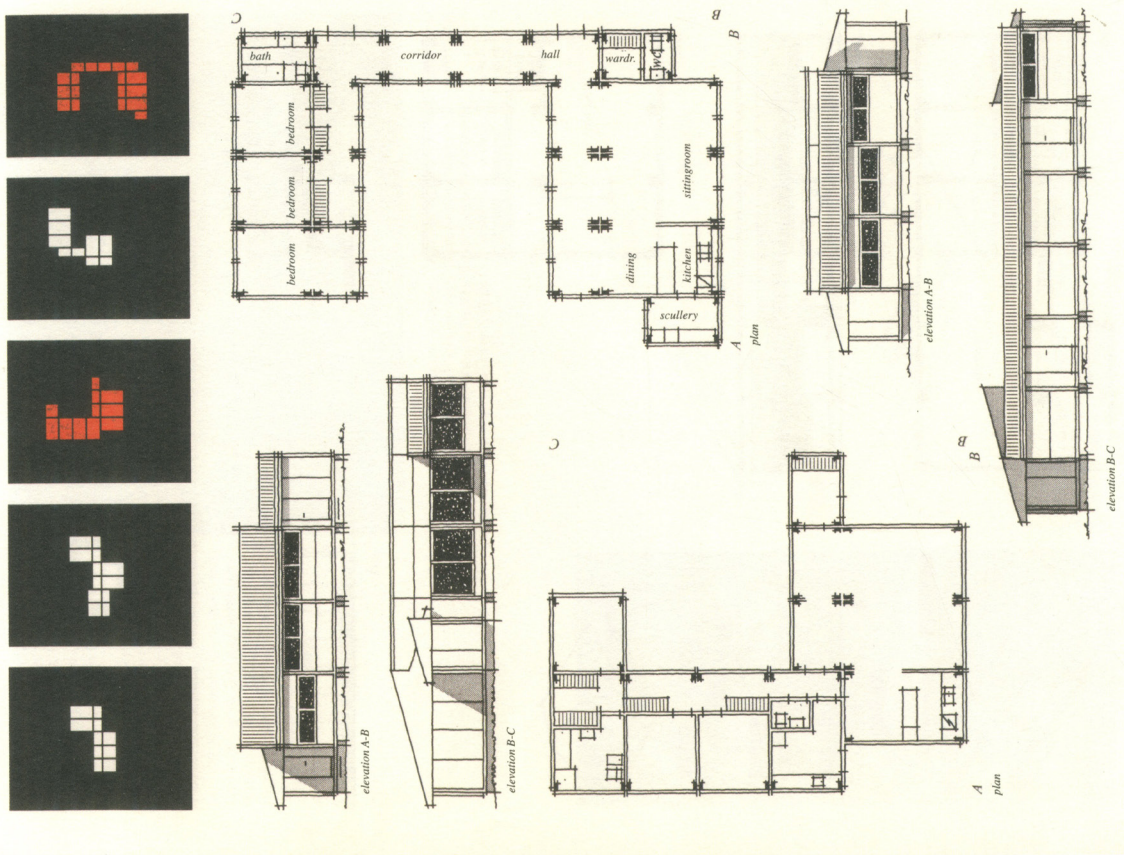


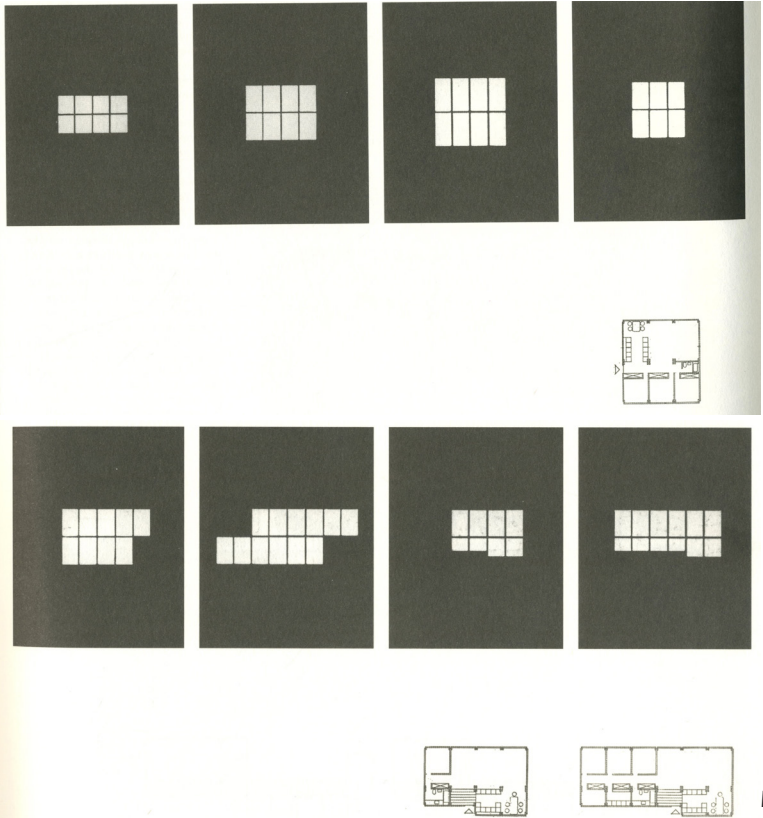
gable



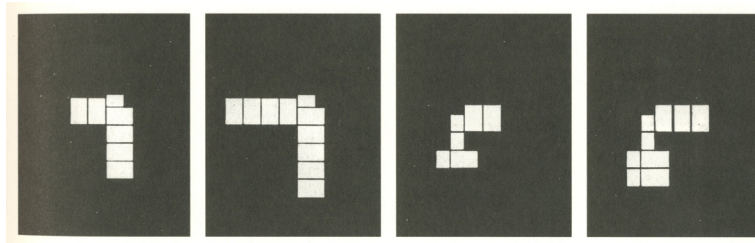
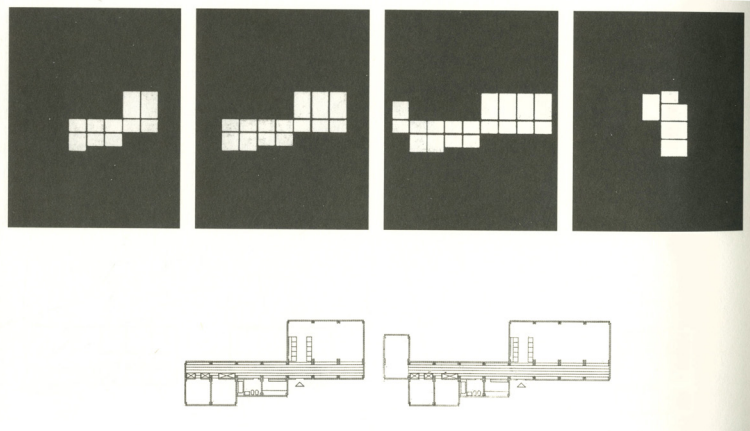
plan

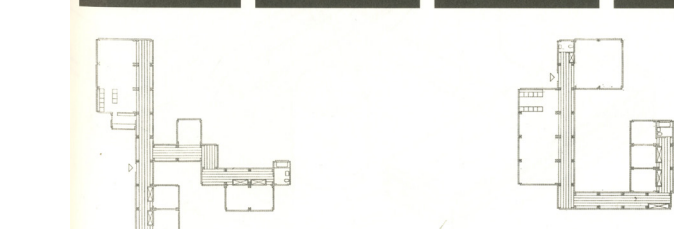
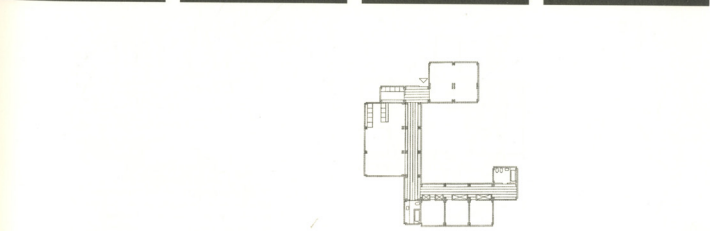
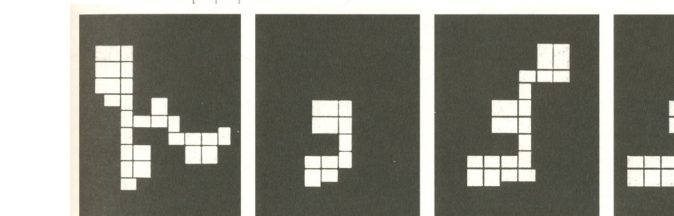
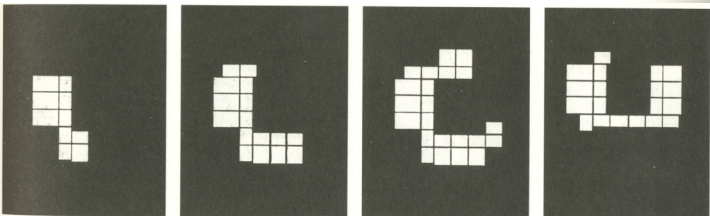
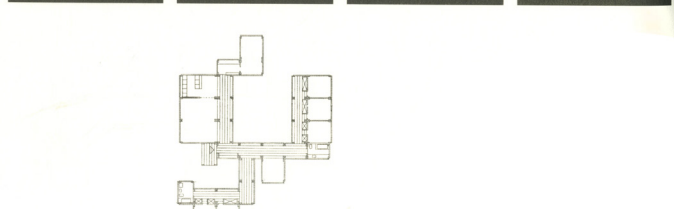
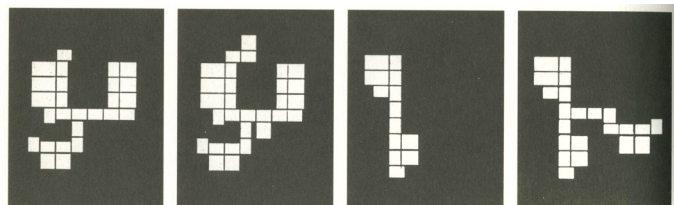
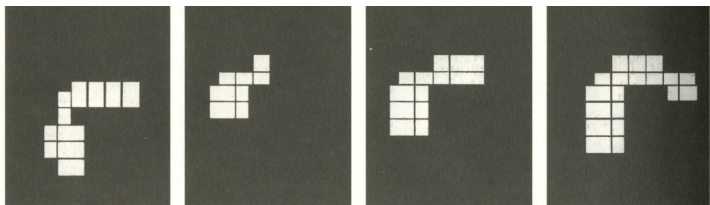


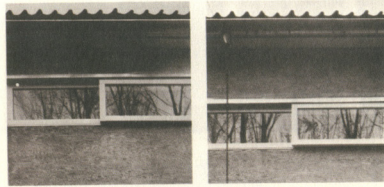




Más prototipos no construidos.

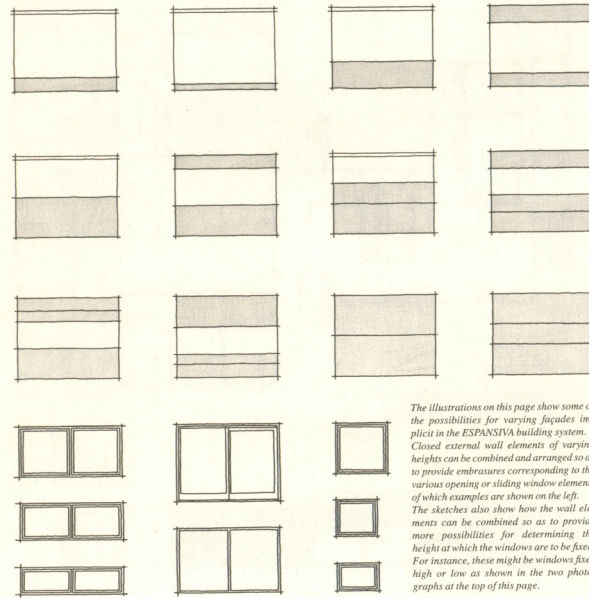






*In planning the design of the house that is to form the framework round a family's life and development over many years, there are many different factors that play an important role for the success of the project.*

*In the Danish National Building Research Institute's recommendation 80: "Before You Choose a Standard House" these circumstances are considered in detail. We have already shown earlier how the ESPANSIVA building system in every way fulfils the demands that can be made not only on a house of today, but also on a house of tomorrow.*



*The illustrations on this page show some of the possibilities for varying façades implicit in the ESPANSIVA building system. Closed external wall elements of varying heights can be combined and arranged so as to provide embrasures corresponding to the various opening or sliding window elements of which examples are shown on the left. The sketches also show how the wall elements can be combined so as to provide more possibilities for determining the height at which the windows are to be fixed. For instance, these might be windows fixed high or low as shown in the two photographs at the top of this page.*

Tipos de fachadas y ventanas.