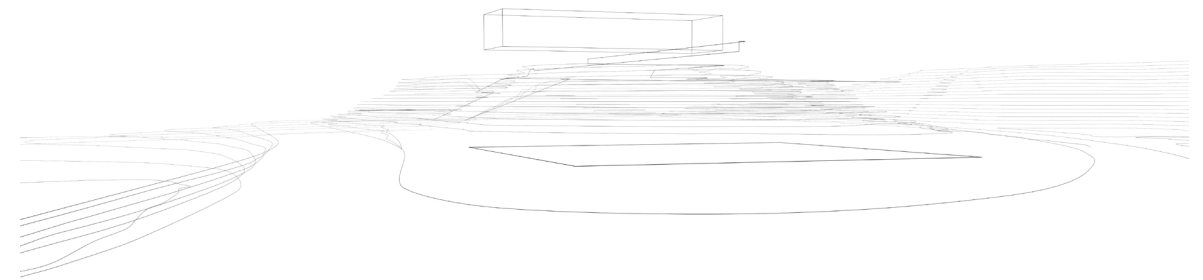


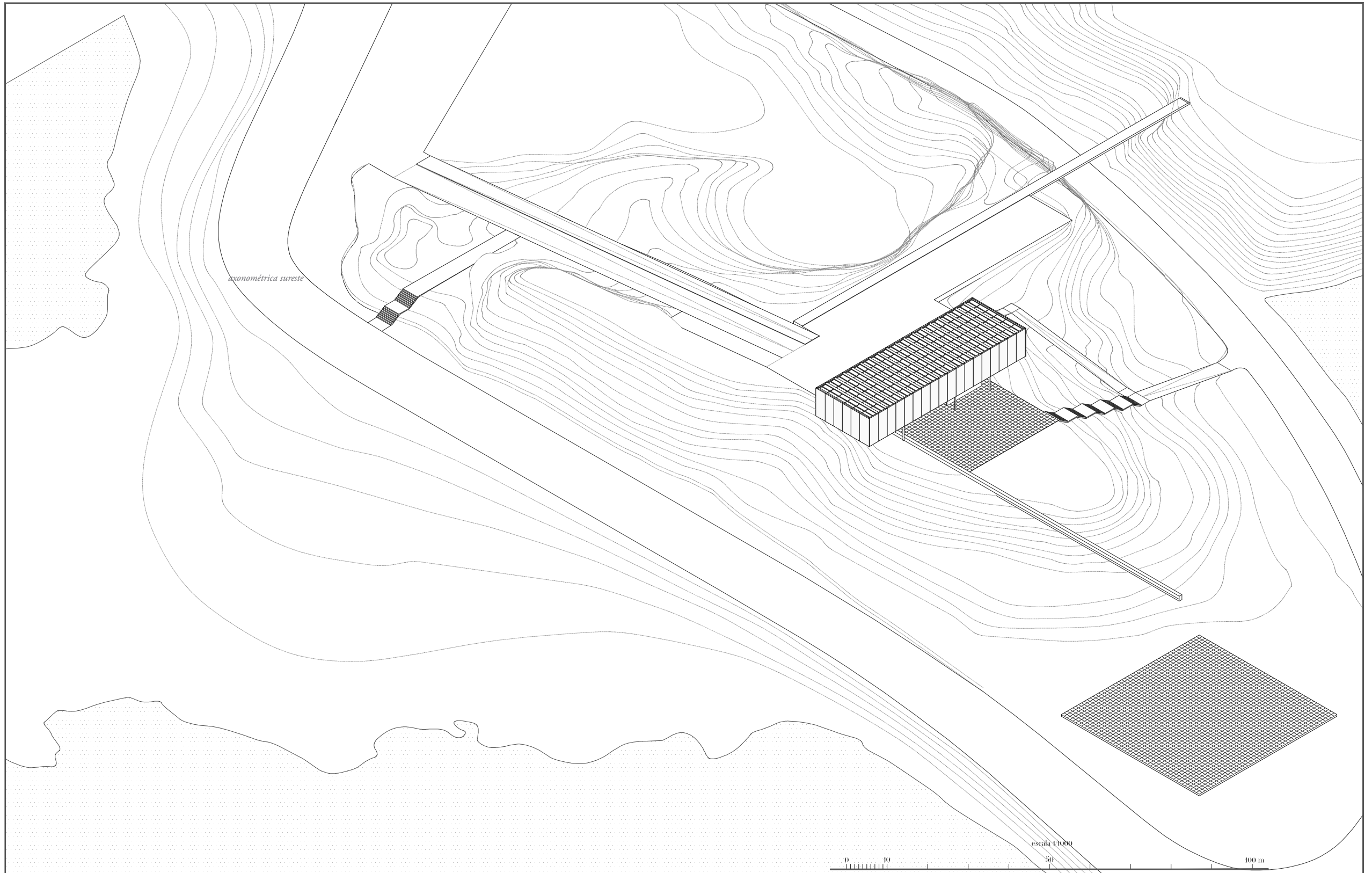
Figura 56. Líneas principales.

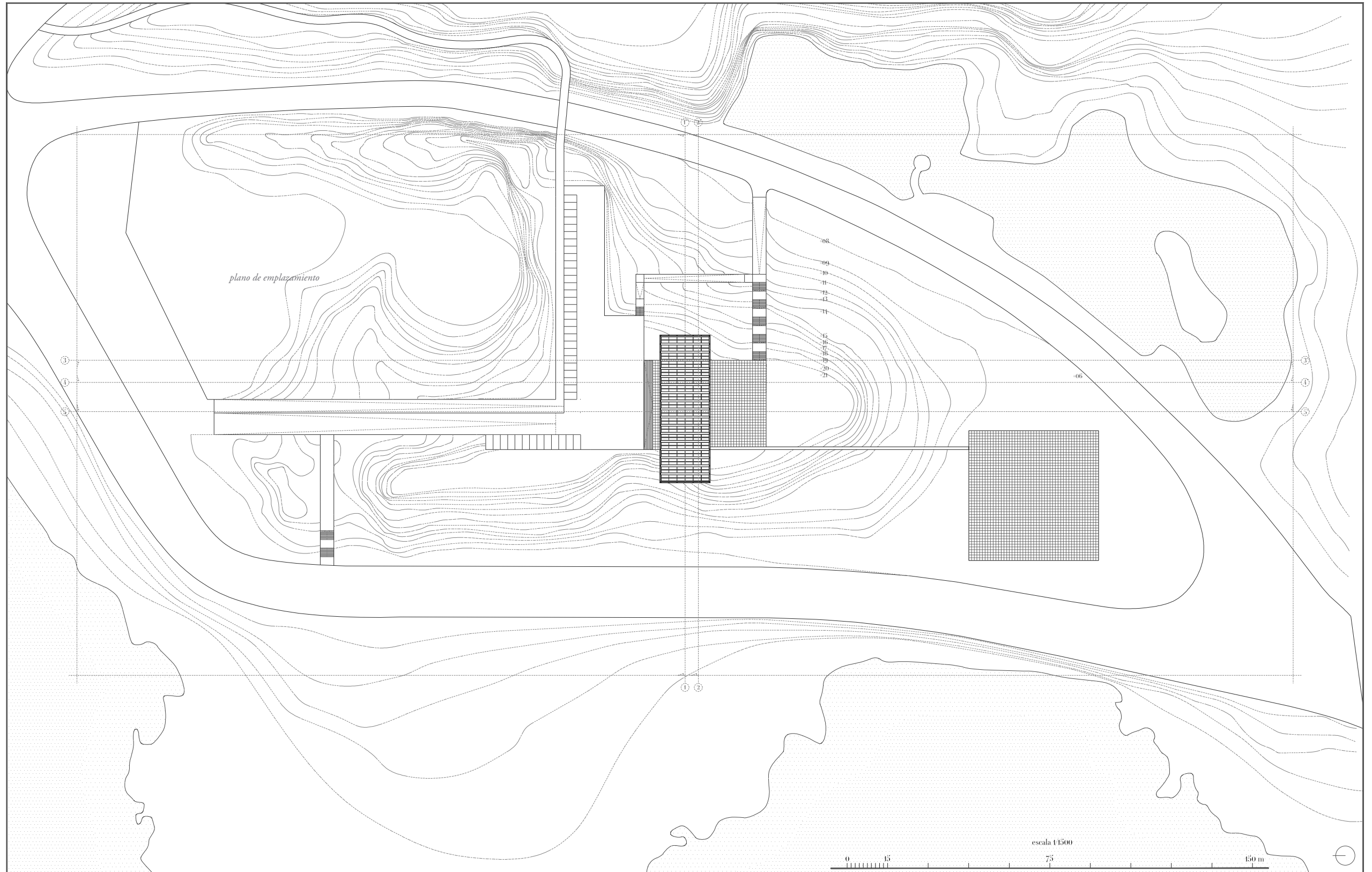
Imagen del autor.

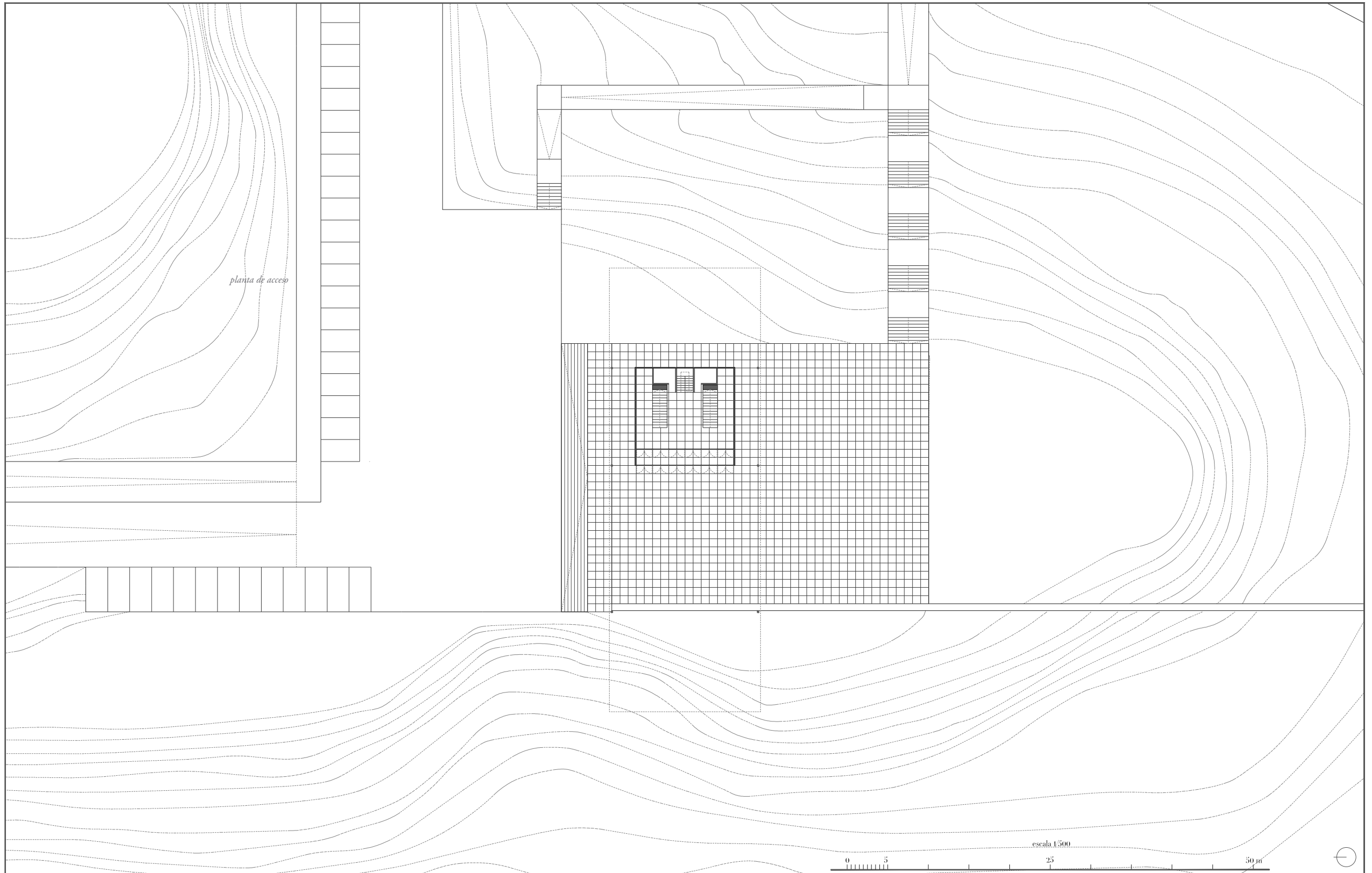
ANEXO

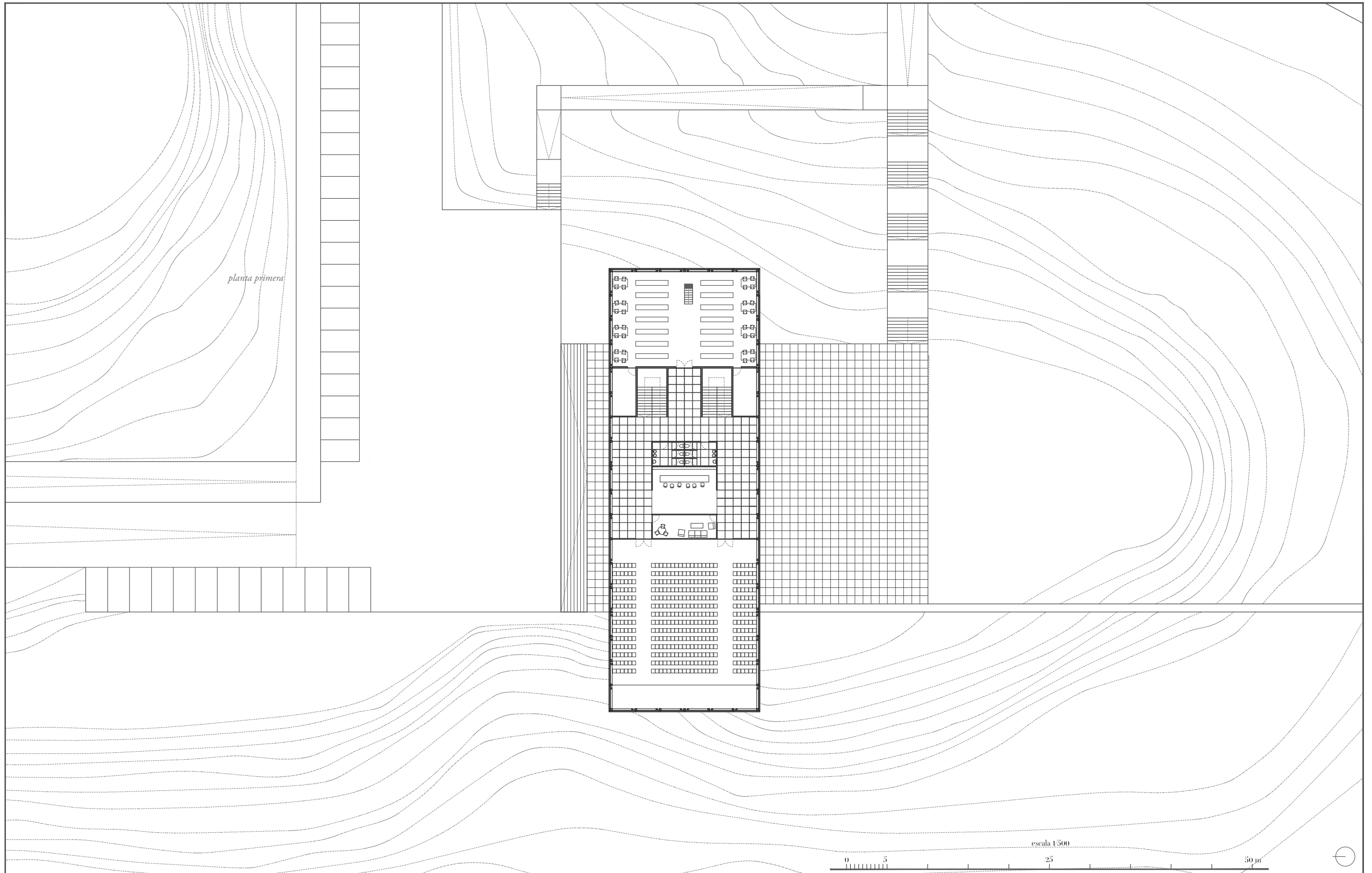
A continuación se presenta la documentación gráfica, a modo de planos, desarrollada durante el proceso de análisis de Monumento a Batlle. La reconstrucción gráfica se basa en el estudio de los documentos de las Memorias de ambas versiones del proyecto, quedándose a nivel de Proyecto Básico, ya que se entiende que para un mayor desarrollo habría que tomar decisiones particulares y, con toda probabilidad, realizar modificaciones en el proyecto original.

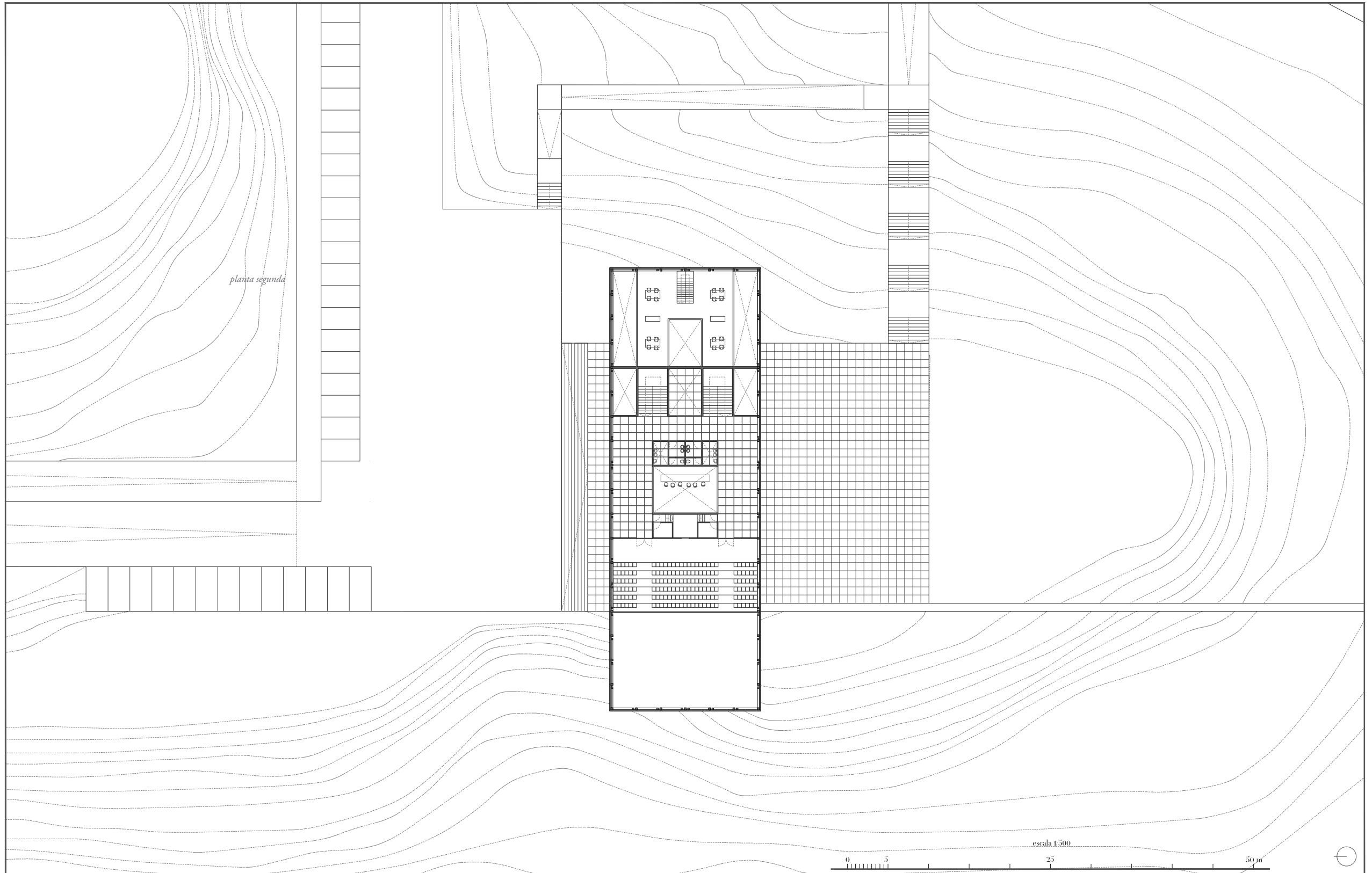


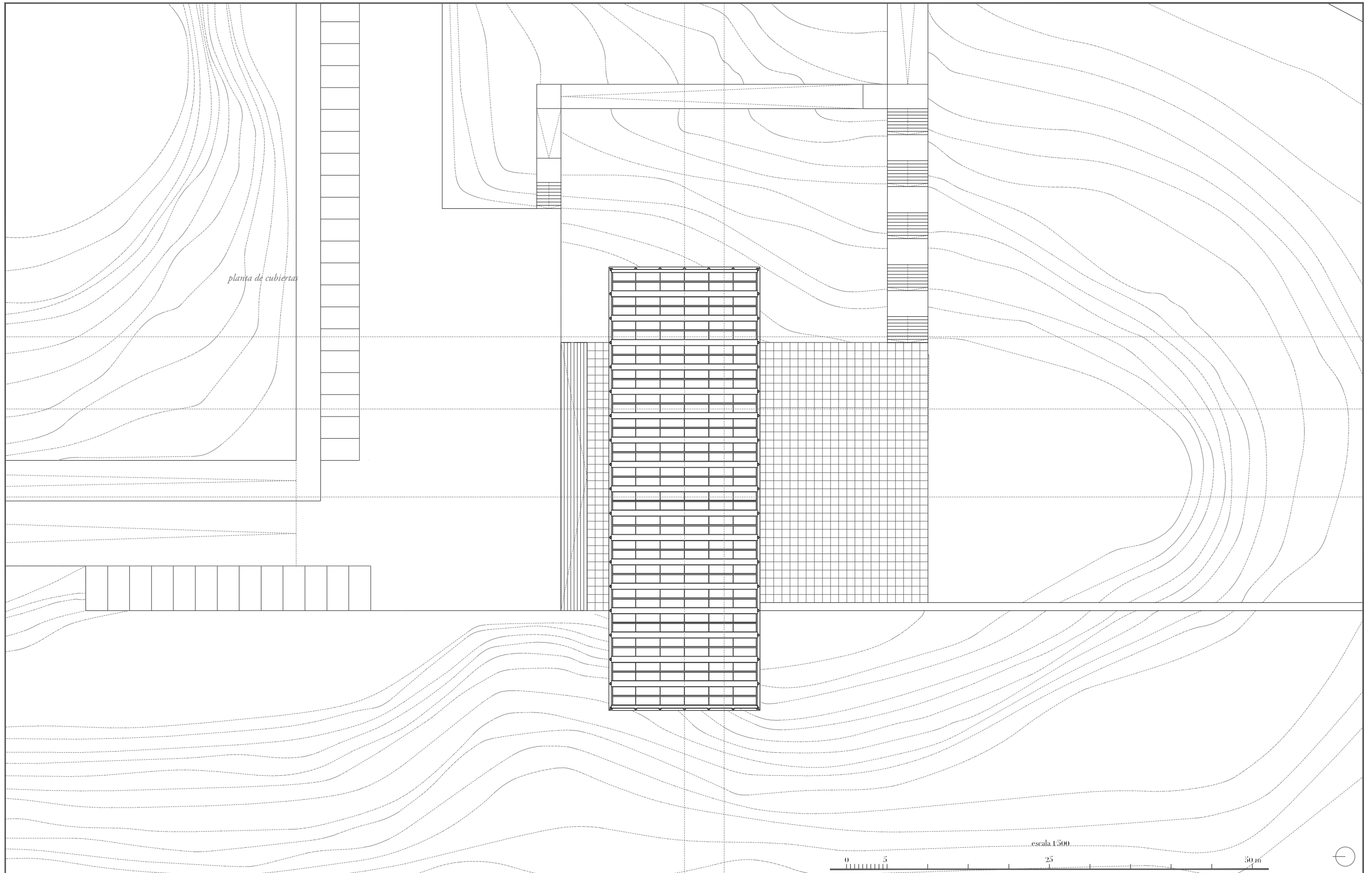










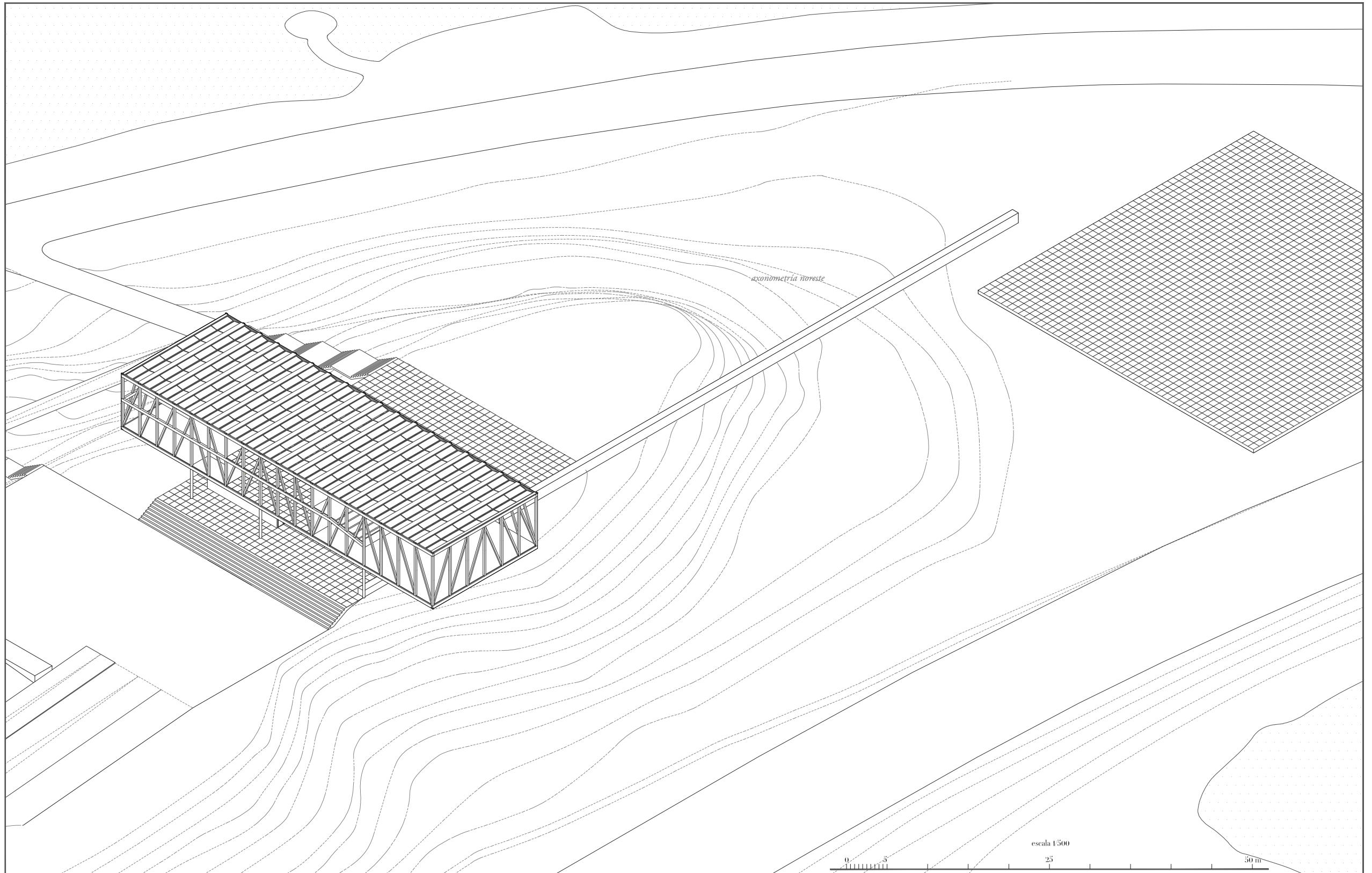


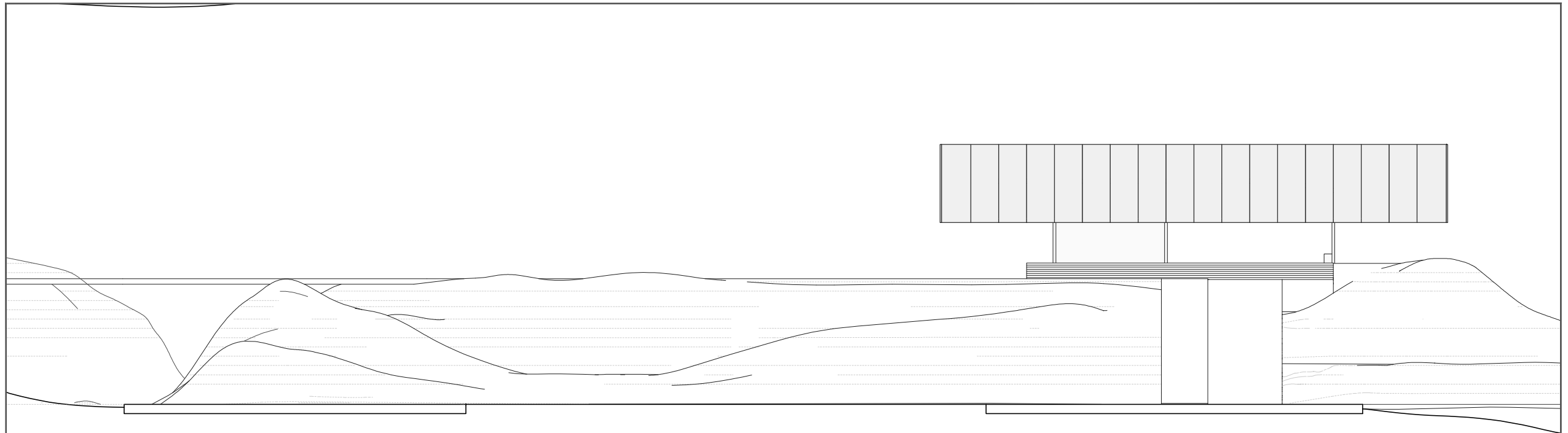
planta de cubiertas

escala 1:500

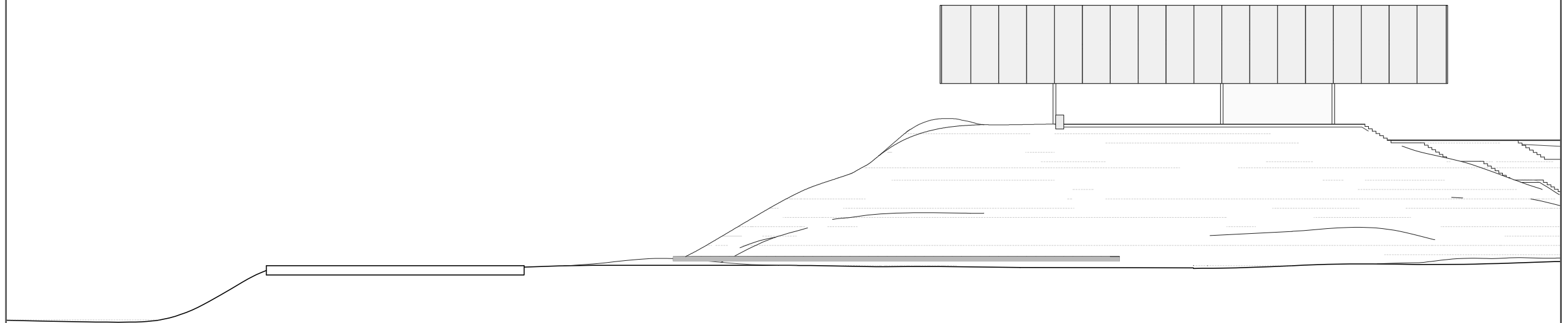
0 5 25 50 m





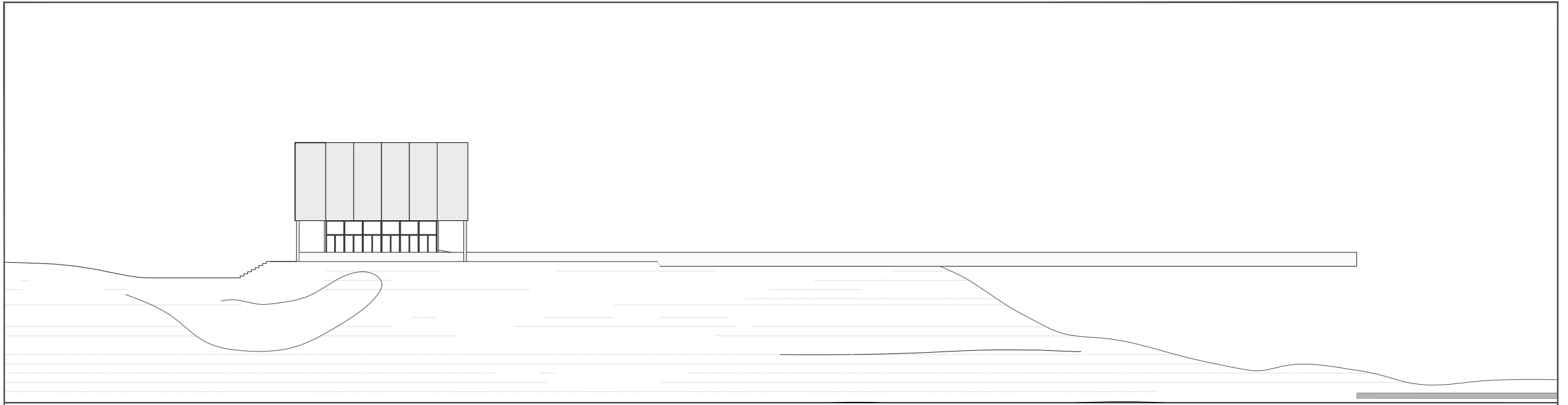


alzado norte



alzado sur

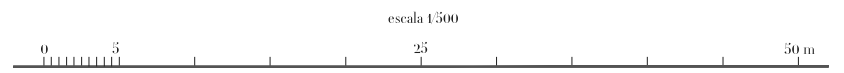




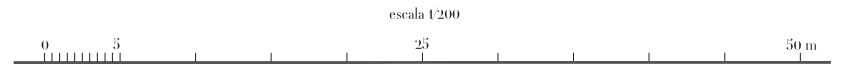
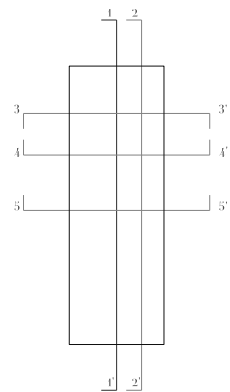
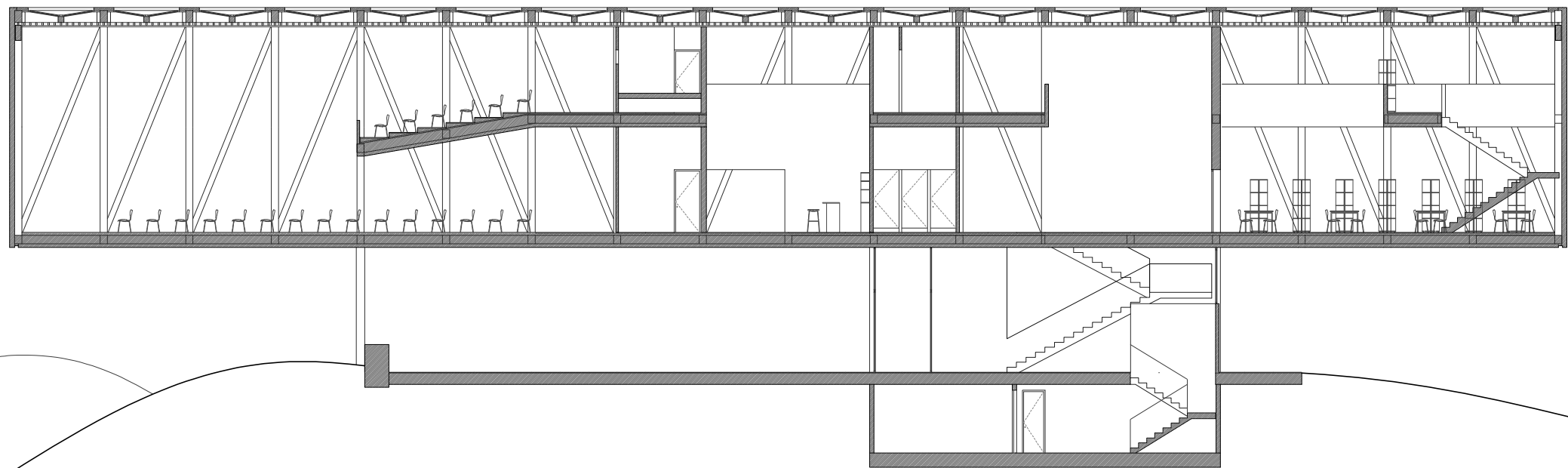
alzado este



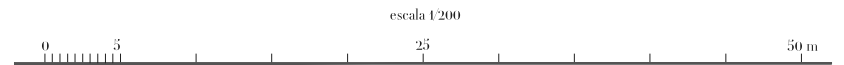
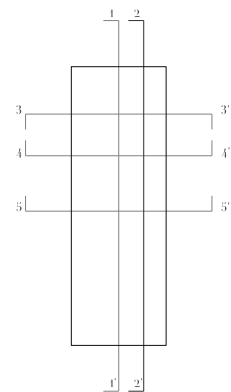
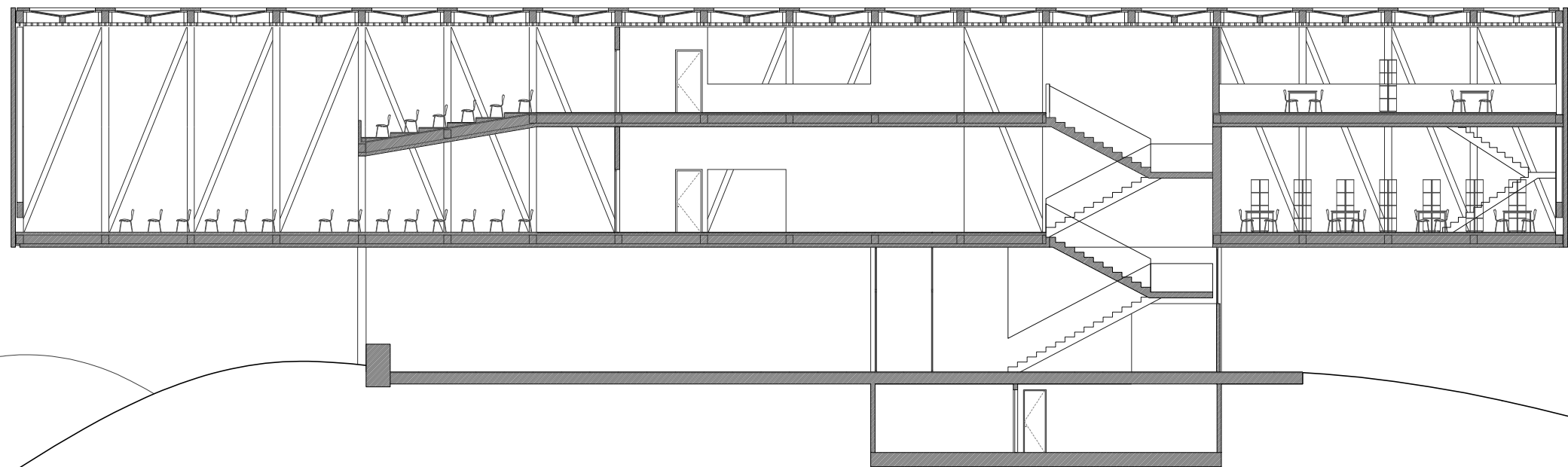
alzado oeste



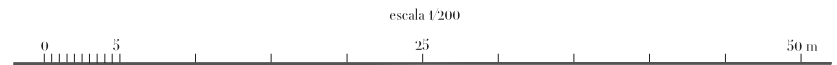
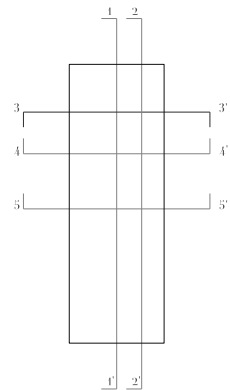
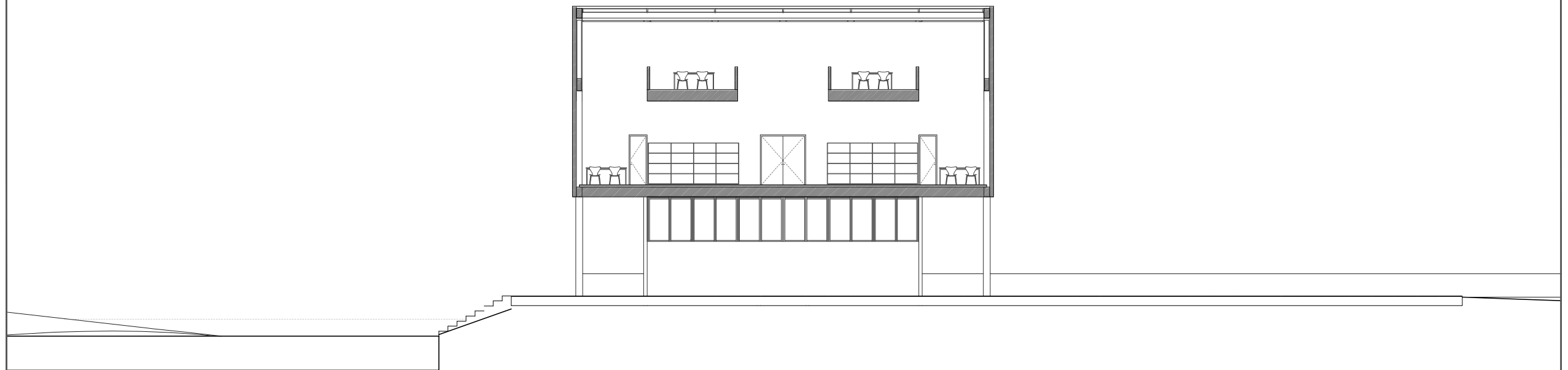
sección longitudinal 1 - 1'



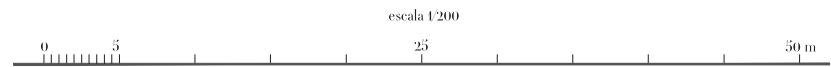
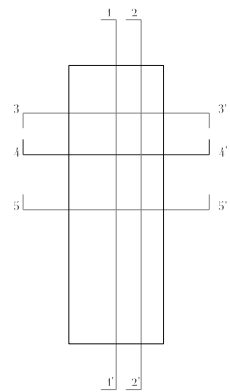
sección longitudinal 2 - 2'



sección transversal 3-3'



sección transversal 4 - 4'



sección transversal 5-5'

