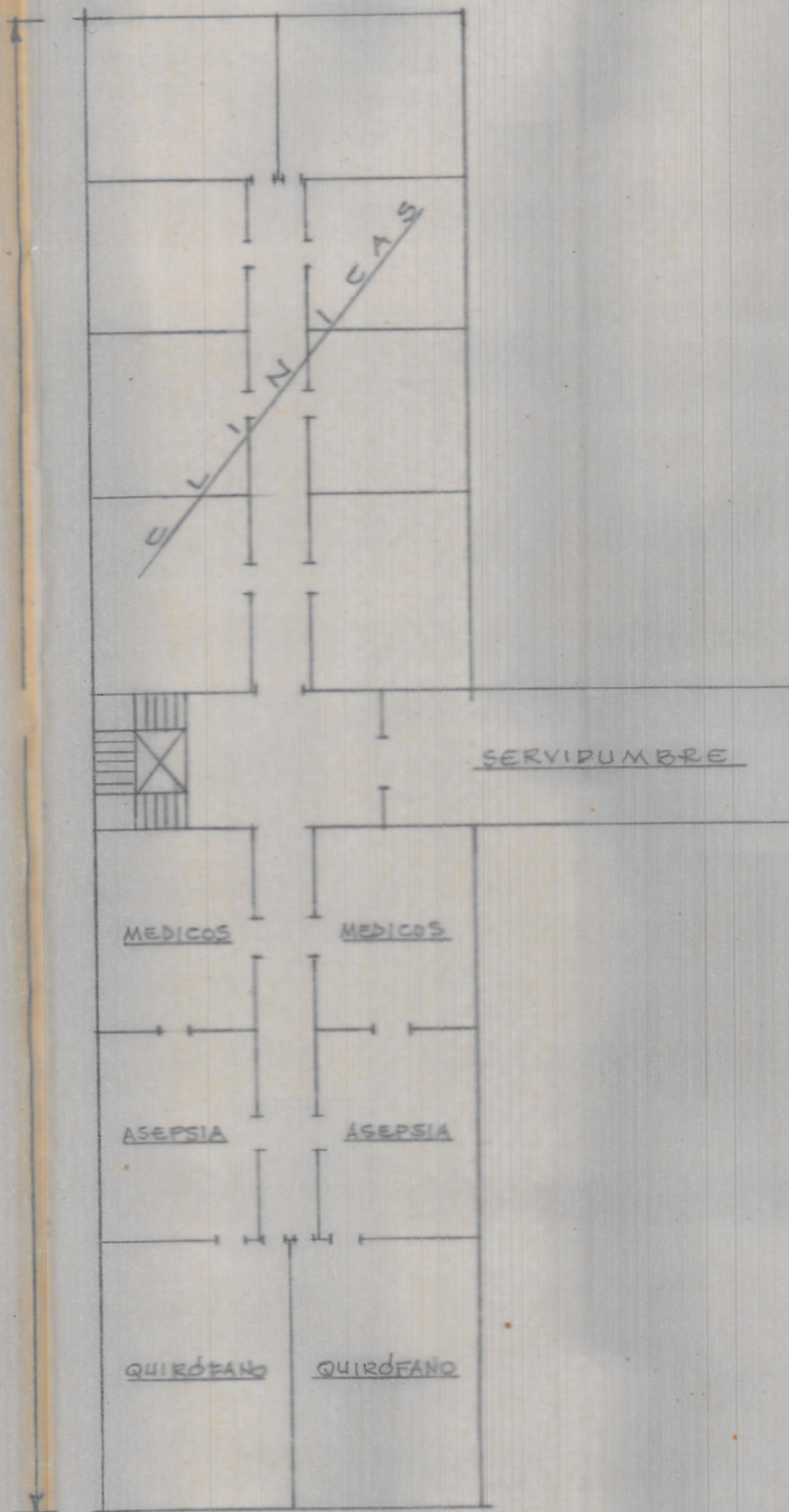
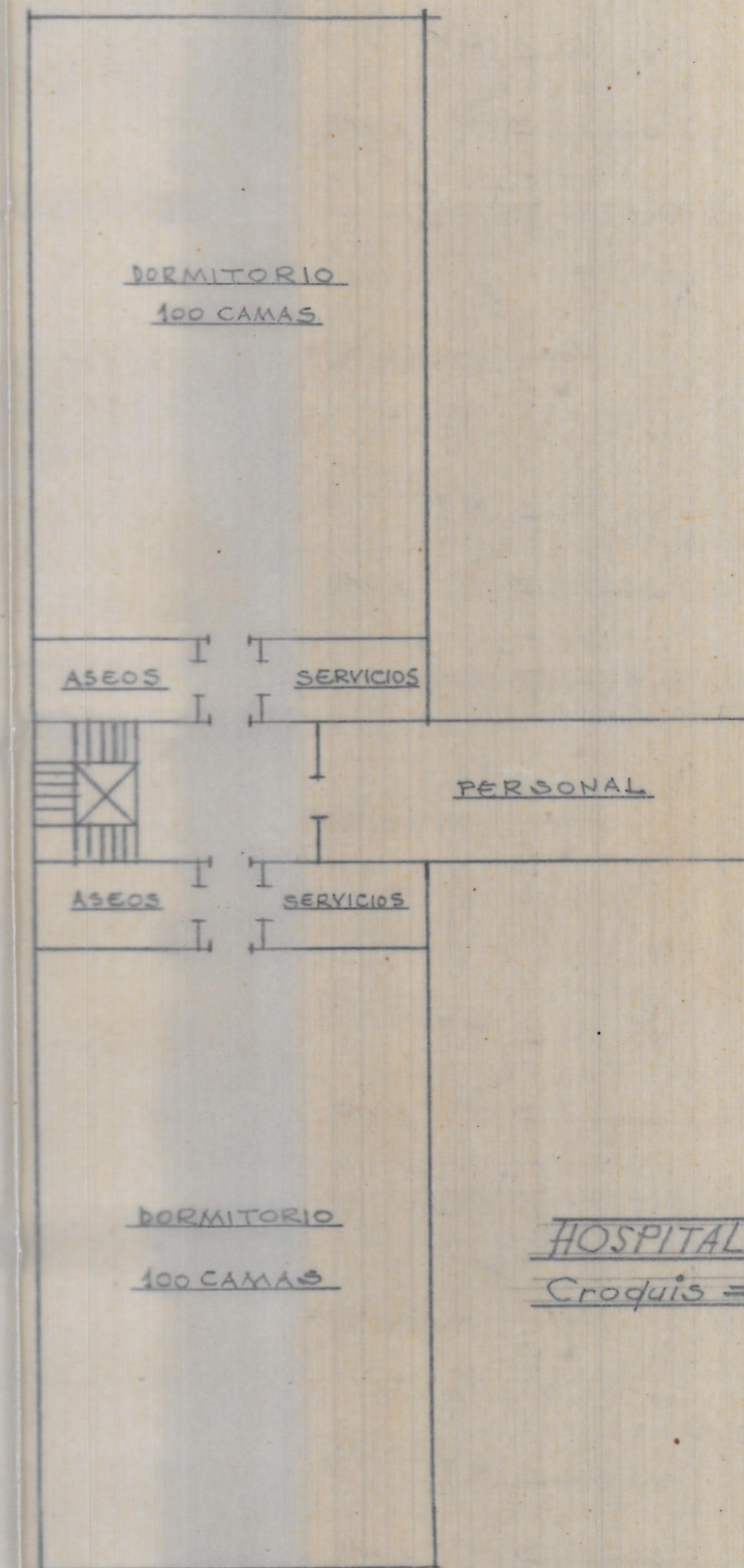


Planta Baja

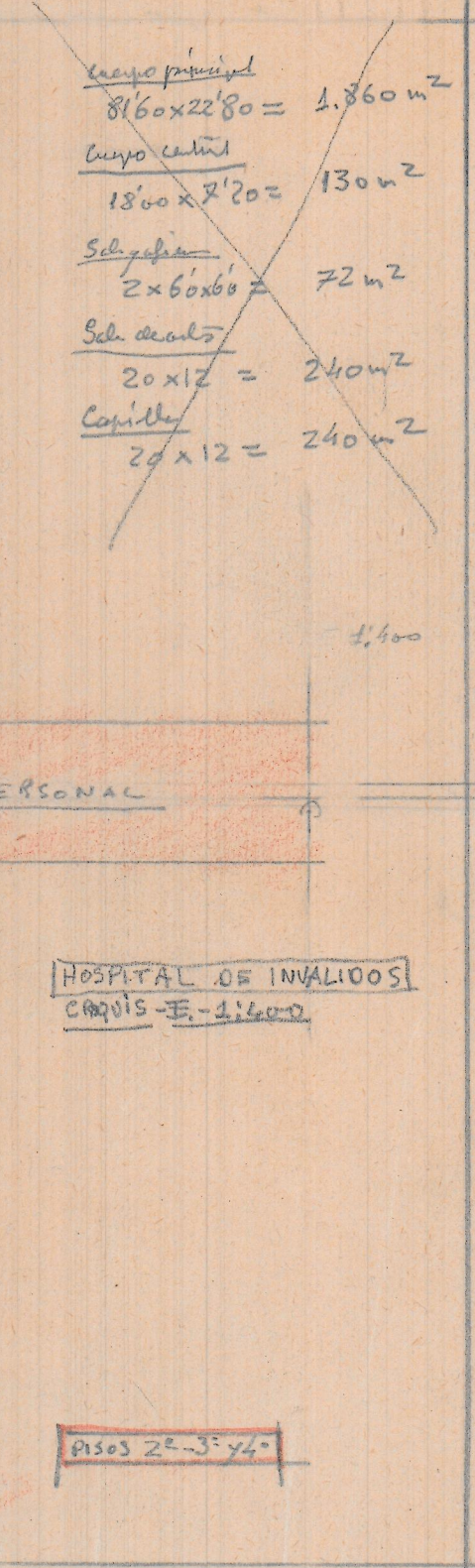
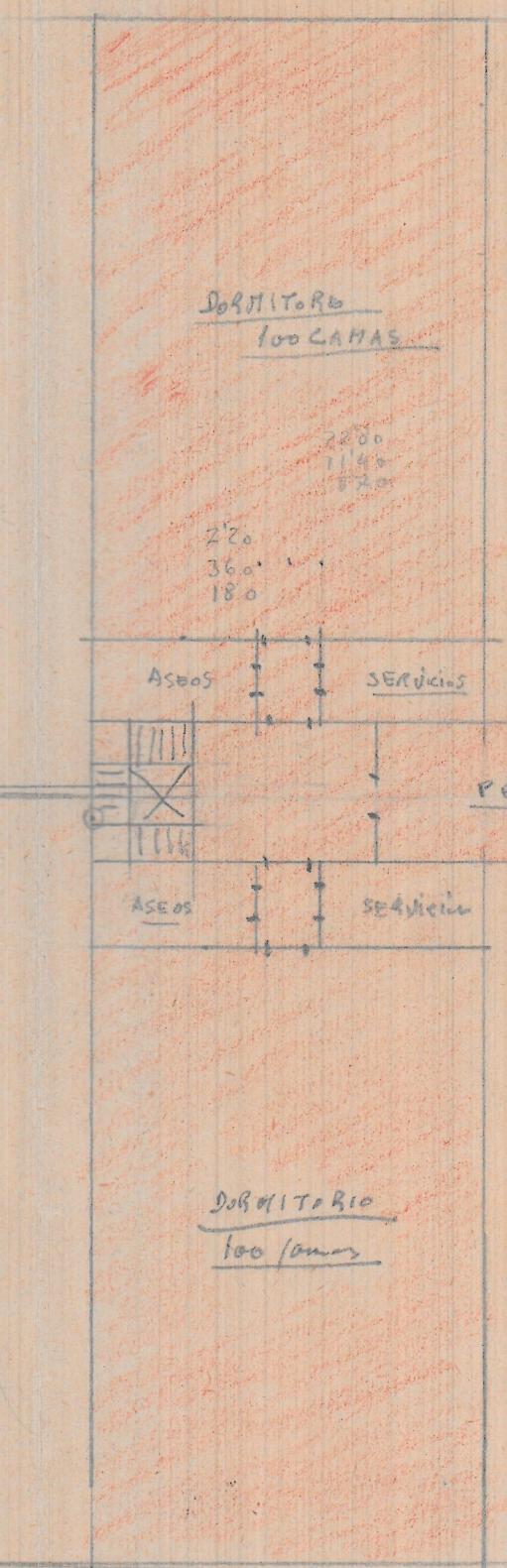
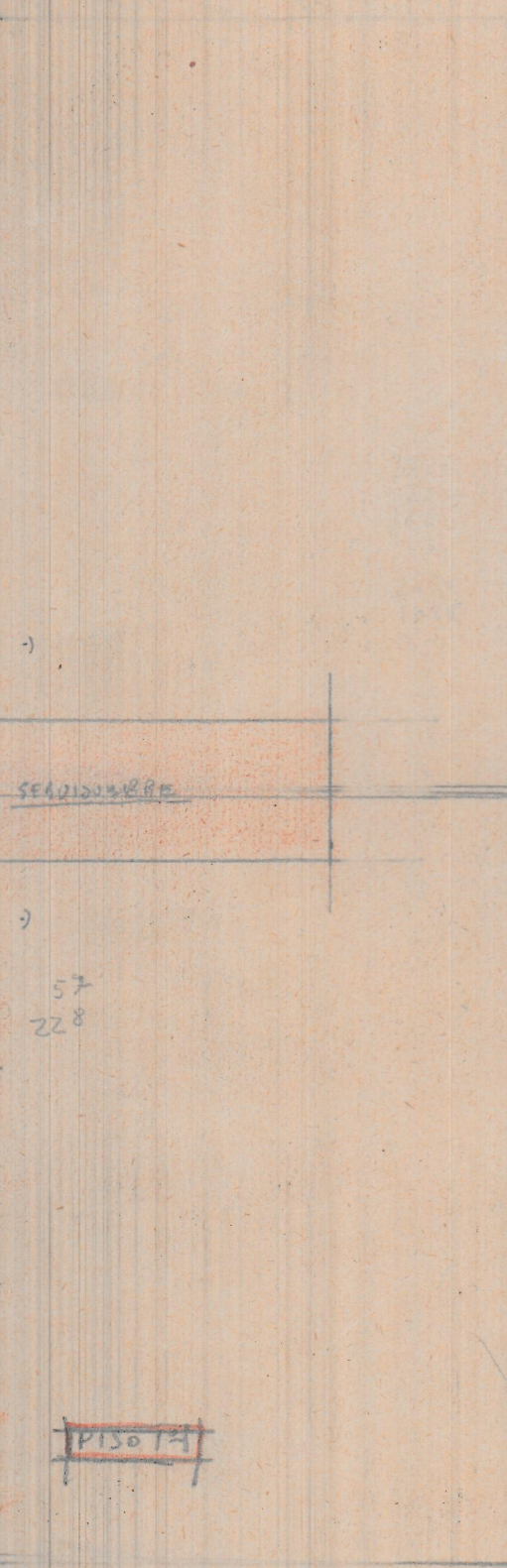
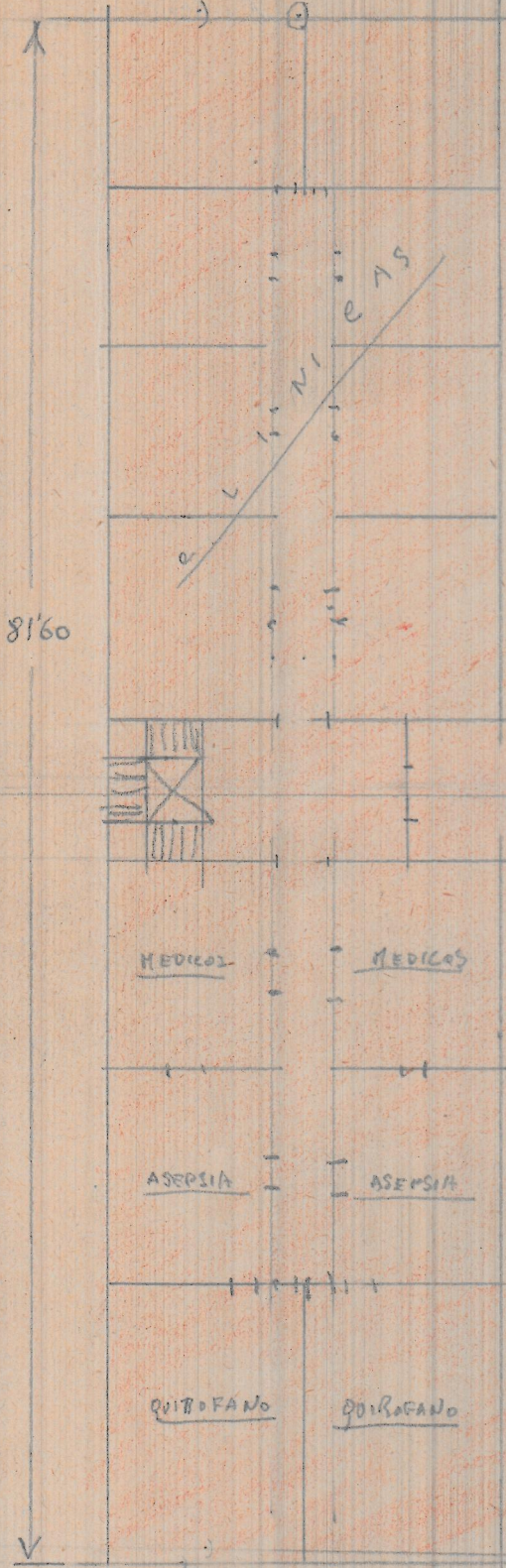
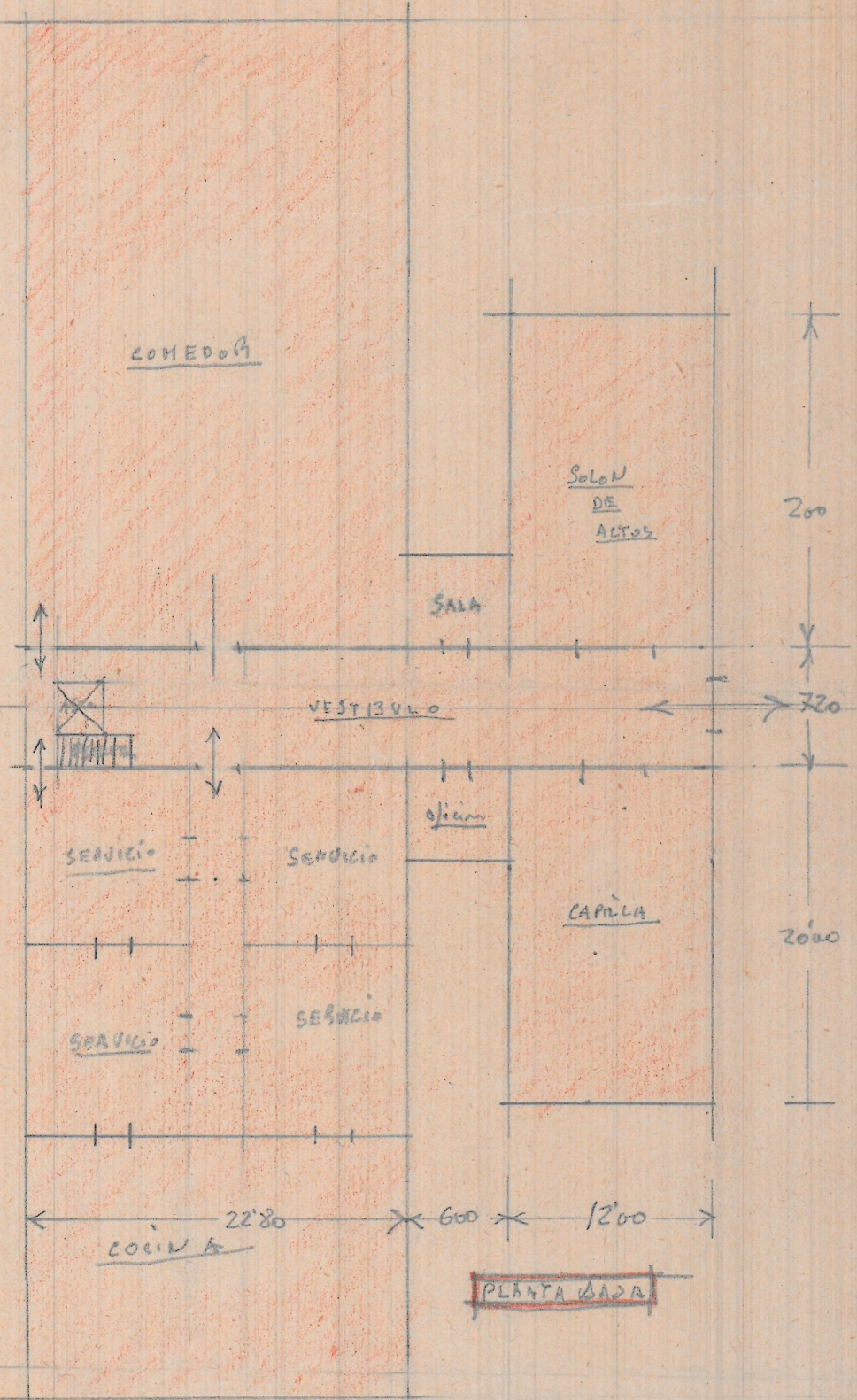


Plano 1º



Planos 2º-3º y 4º

HOSPITAL DE INVALIDOS
Croquis = ESCALA = 1:400



~~Cuyo principal
 $81'60 \times 22'80 = 1.860 m^2$
 Cuyo central
 $18'00 \times 2'20 = 130 m^2$
 Sala de enfermos
 $2 \times 6'00 \times 6'00 = 72 m^2$
 Sala de actos
 $20 \times 12 = 240 m^2$
 Capilla
 $20 \times 12 = 240 m^2$~~

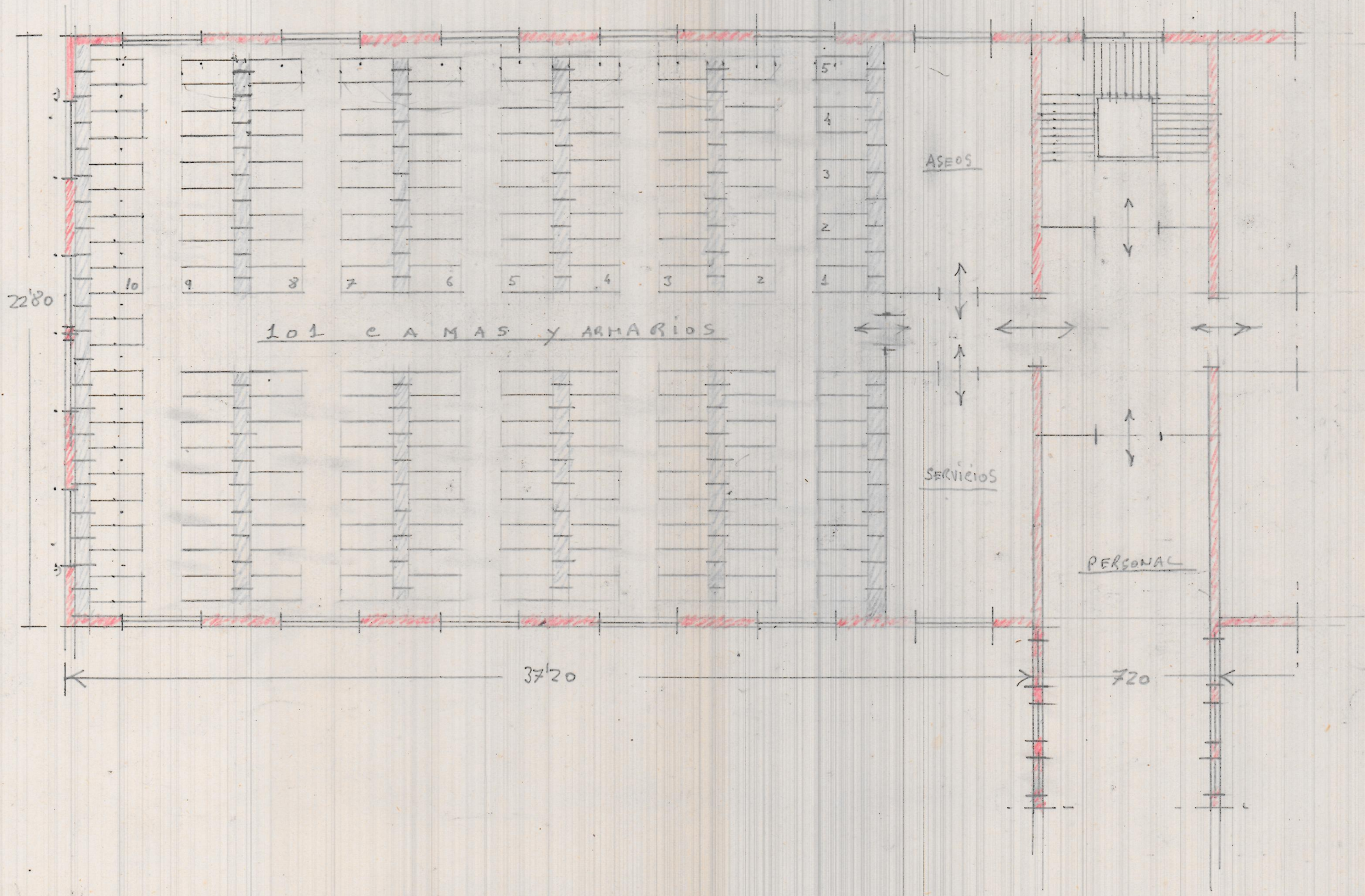
DORMITARIO
 100 CAMAS

22'00
 11'40
 5'20
 2'20
 36'00
 18'00

HOSPITAL DE INVALIDOS
 CASPIS - E - 1'600

DORMITARIO
 100 CAMAS

Pisos 2°-3°-4°



101 CAMAS y ARMARIOS

ASEOS

SERVICIOS

PERSONAL

2280

3720

720

13
560
1860
2
3720

1140
2280