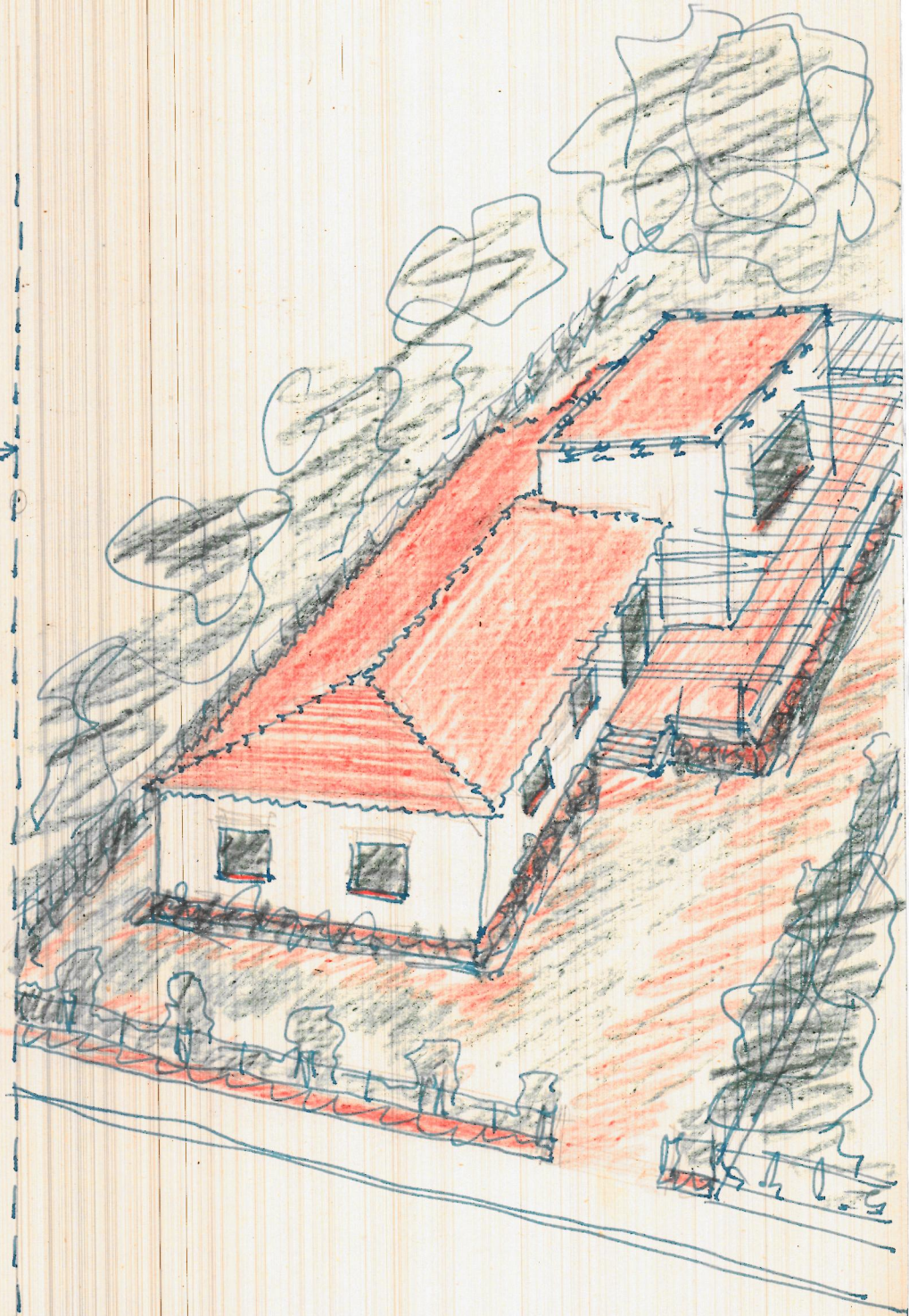
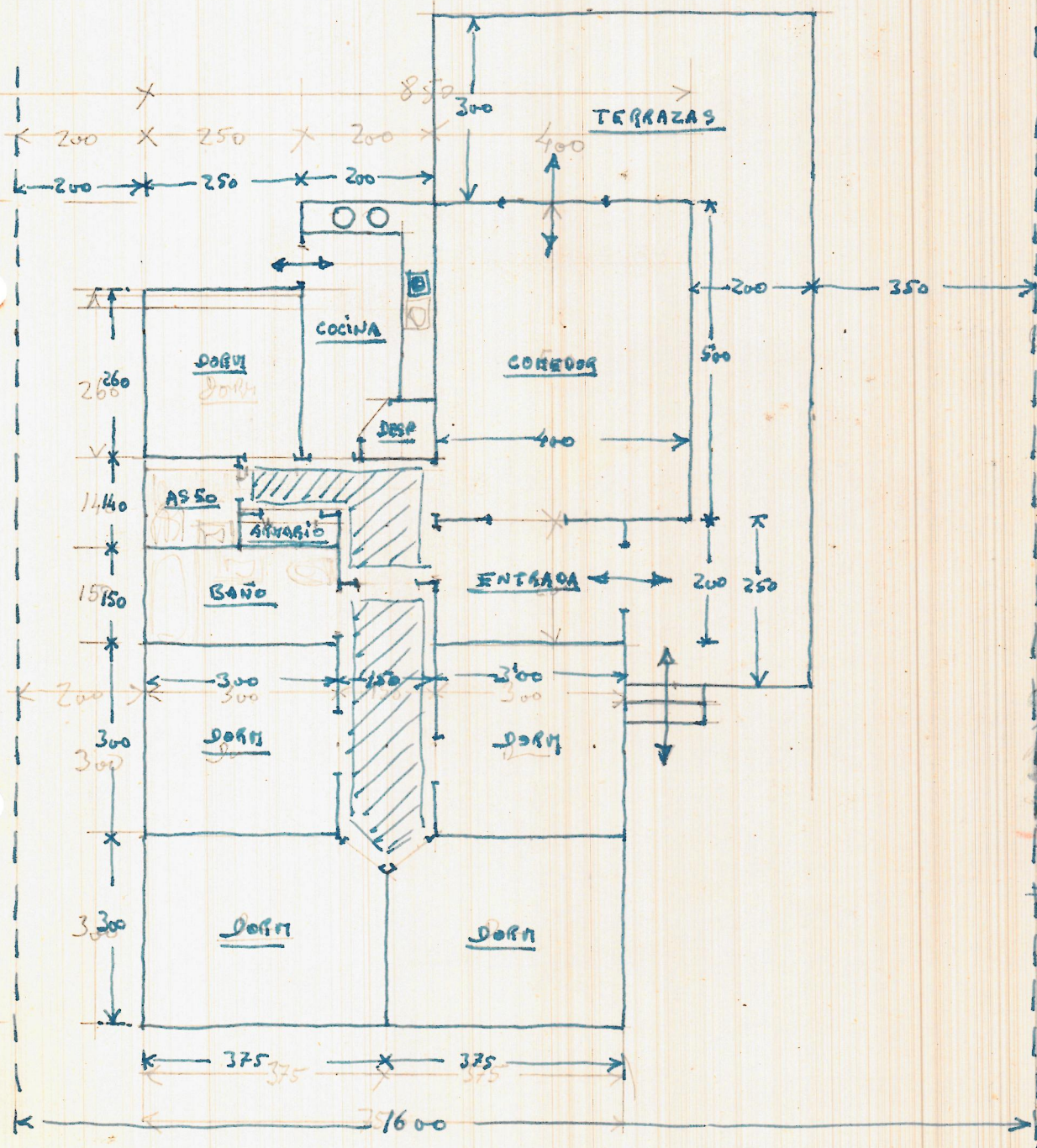


EDIFICADO  
 SIN MUROS  
 $7'50 \times 11'50 = 85'25$   
 $1'40 \times 6'00 = 8'40$   
 $1'00 \times 5'00 = 5'00$   
98'65 m<sup>2</sup>

TERRAZAS  
 $6'00 \times 3'00 = 18'00$   
 $2'00 \times 5'00 = 10'00$   
 $3'00 \times 2'50 = 7'50$   
 $1'00 \times 5'00 = 5'00$   
35'50 m<sup>2</sup>  
 98'65



E.-1:200

EDIFICADO SIN MUROS — 98'65 m<sup>2</sup>

TERRAZAS — 35'50 m<sup>2</sup>

31'50 m<sup>2</sup> con la modificación

